

# Customer Information Sheet

DRAWING No.: M80-4D10242FI-00-000-02-326

SHEET 2 OF 2

IF IN DOUBT - ASK

©

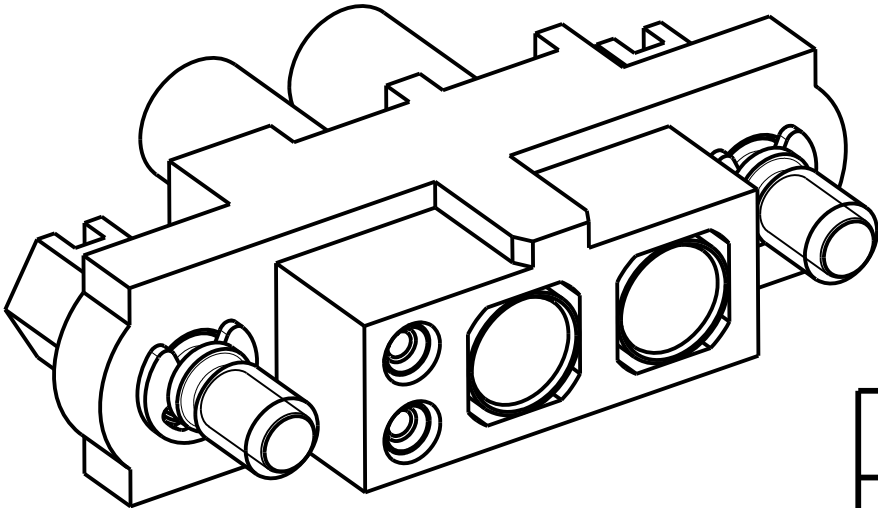
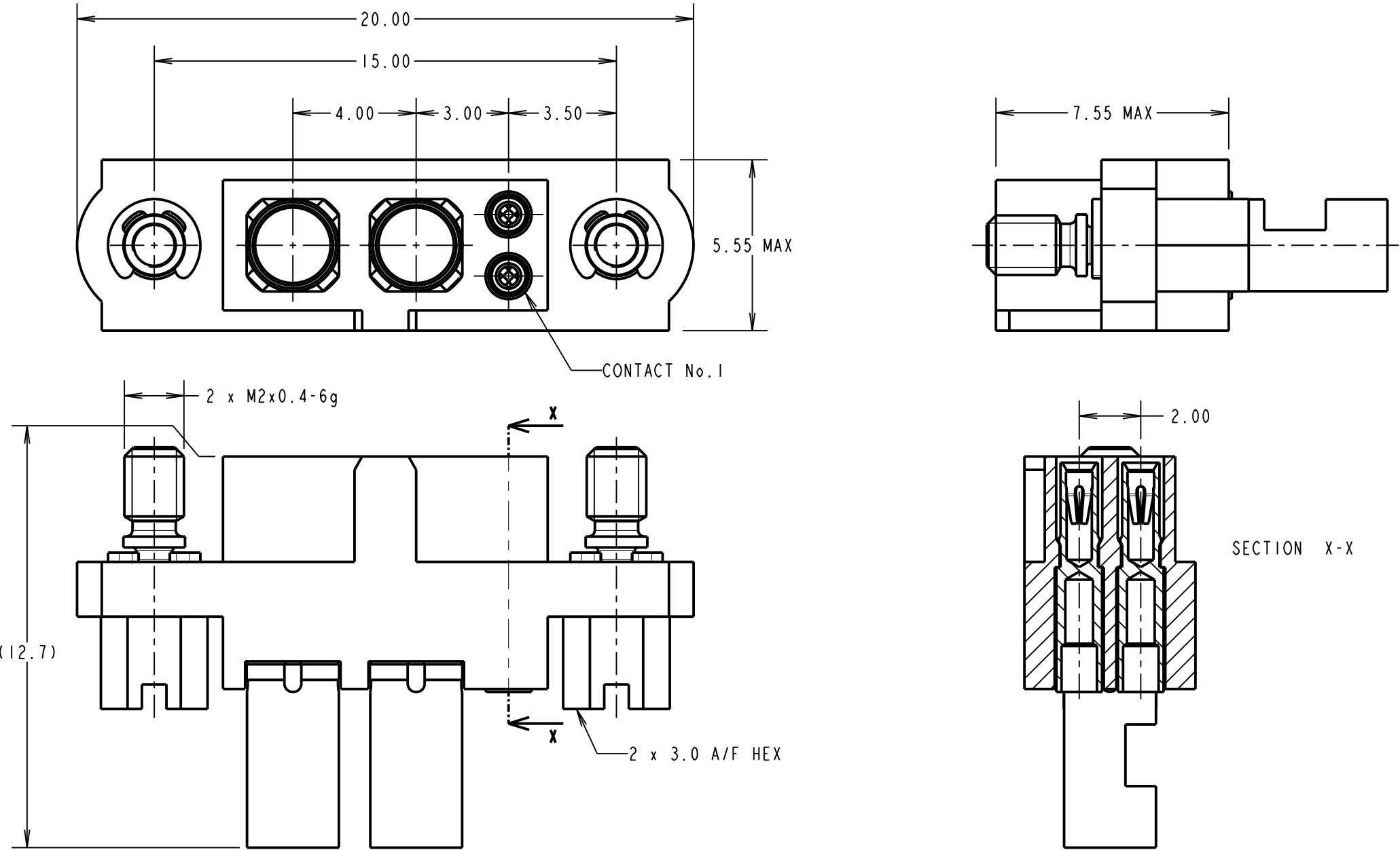
NOT TO SCALE

THIRD ANGLE PROJECTION

ALL DIMENSIONS IN mm

**SPECIFICATIONS:**

**MATERIAL:**  
MOULDING: GLASS FILLED PPS, UL94V-0, BLACK  
**SIGNAL CONTACT:**  
CLIP = BERYLLIUM COPPER  
SHELL = BRASS  
**POWER CONTACT:**  
BODY = COPPER ALLOY  
LATCHING COLLAR = BERYLLIUM COPPER  
JACKSCREW, CIRCLIP: STAINLESS STEEL  
**FINISH:**  
**SIGNAL CONTACT:**  
CLIP = 0.3µ GOLD  
SHELL = 3.5-5.0µ 100% TIN OVER NICKEL  
**POWER CONTACT:**  
BODY = GOLD  
LATCHING COLLAR = NICKEL  
**ELECTRICAL:**  
WORKING VOLTAGE = 120V AC/DC  
VOLTAGE PROOF = 360V AC/DC  
INSULATION RESISTANCE = 100MΩ MIN  
**SIGNAL CONTACT:**  
CURRENT RATING AT 25°C = 3.0A MAX  
CURRENT RATING AT 85°C = 2.2A MAX  
CONTACT RESISTANCE = 25 mΩ MAX  
**POWER CONTACT:**  
CONTACT RESISTANCE = 6 mΩ MAX  
CURRENT RATING = 15A MAX WITH 14AWG  
CONTACT AS SPECIFIED  
**MECHANICAL:**  
DURABILITY = 500 OPERATIONS  
**SIGNAL CONTACT:**  
INSERTION FORCE = 2.8N MAX  
WITHDRAWAL FORCE = 0.2N MIN  
**POWER CONTACT:**  
INSERTION FORCE = 5N MAX  
WITHDRAWAL FORCE = 0.5N MIN  
**ENVIRONMENTAL:**  
TEMPERATURE RANGE = -55°C TO +125°C  
**PACKING:**  
BAG  
FOR COMPLETE SPECIFICATION SEE COMPONENT SPECIFICATION C005XX (LATEST ISSUE)



- NOTES:**
- 1. CONNECTORS ARE SUPPLIED WITH CONTACTS LOOSE.
  - 2. FOR EXTRA SIGNAL CONTACTS, USE PART NUMBER M80-0110001.
  - 3. RECOMMENDED SIGNAL WIRE TYPE = BS 3G 210 TYPE A, PTFE INSULATED 22 AWG. MAX INSULATION DIAMETER = Ø1.10mm. STRIP WIRE BY 2.00MM FOR CRIMPING.
  - 4. RECOMMENDED HAND CRIMP TOOL FOR SIGNAL CONTACTS = M22520/2-01 WITH POSITIONER T5747.
  - 5. SIGNAL CONTACT INSERTION AND EXTRACTION TOOL = Z80-280.
  - 6. FOR EXTRA POWER CONTACTS, USE PART NUMBER M80-326
  - 7. POWER CONTACT WIRE, STRIP BY 5.00mm MINIMUM
  - 8. POWER CONTACT EXTRACTION TOOL = Z80-290
  - 9. INSTRUCTION SHEETS ARE AVAILABLE.

SM	2	21.02.11	11141
NAME	ISS.	DATE	C/NOTE
APPROVED: S. MCCULLAGH			
CHECKED: R. ADDE			
DRAWN: M. G. PLESTED			
CUSTOMER REF.:			
ASSEMBLY DRG:			

<b>HARWIN</b>			TOLERANCES X. = ±1mm X.X = ±0.25mm X.XX = ±0.10mm X.XXX = ±0.01mm  ANGLES = ±5°  UNLESS STATED	MATERIAL:  SEE ABOVE  FINISH: SEE ABOVE  S/AREA: mm²	TITLE: JACKSCREW DATAMATE MIXED TECHNOLOGY CRIMP FEMALE ASSEMBLY  DRAWING NUMBER: <b>M80-4D10242FI-00-000-02-326</b>	SHT 2 OF 2
HARWIN USA TEL: 603 893 5376 FAX: 603 893 5396 mis@harwin.com	HARWIN Europe (UK) TEL: 023 9231 4545 FAX: 023 9231 4590 mis@harwin.co.uk	HARWIN Asia TEL: +65 6 779 4909 FAX: +65 6 779 3868 mis@harwin.com.sg				