

# Customer Information Sheet

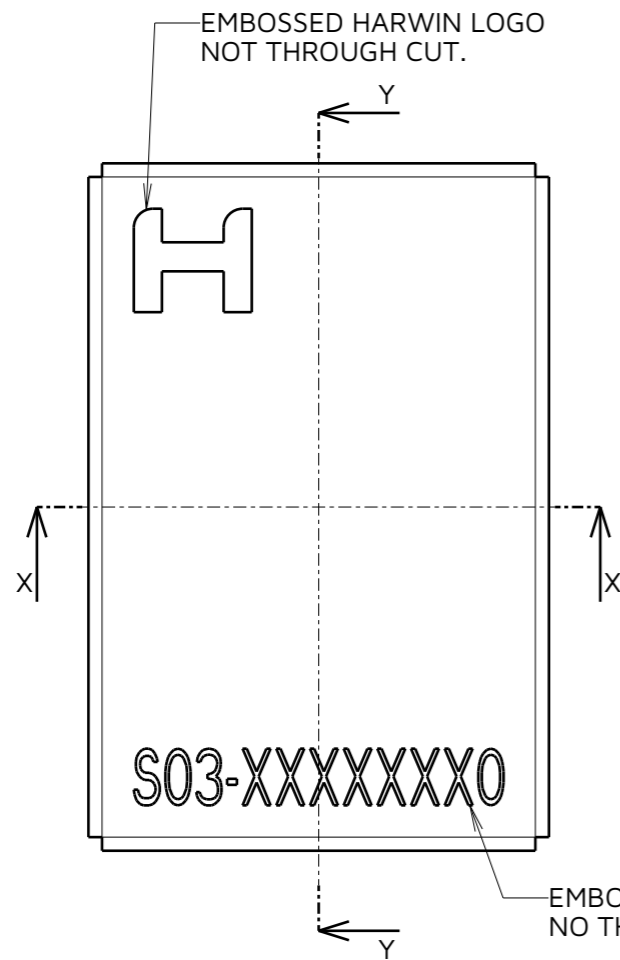
IF IN DOUBT - ASK

©

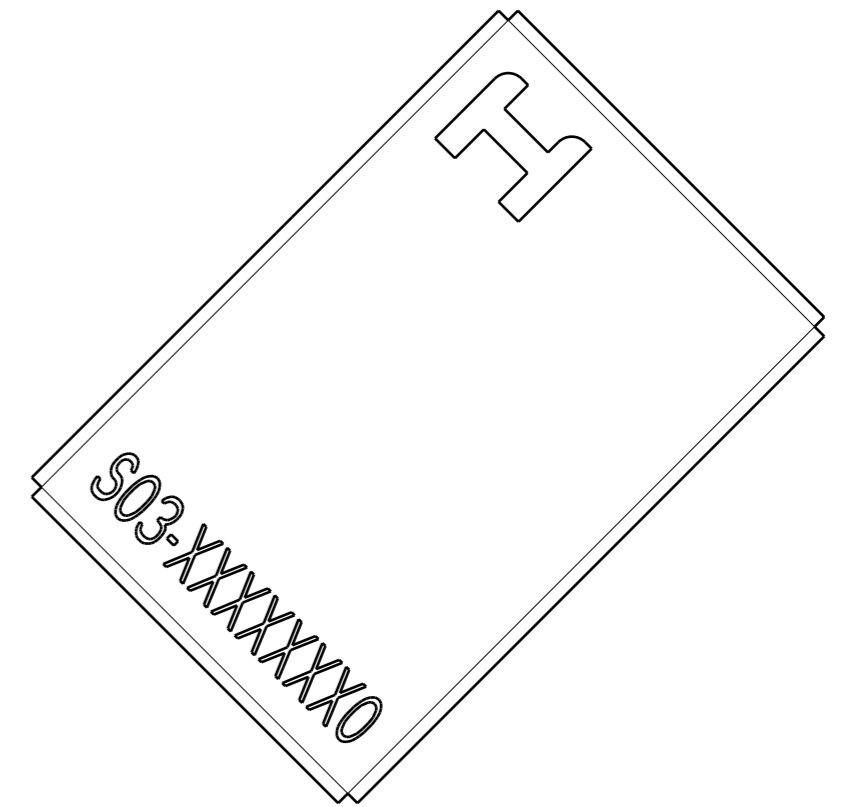
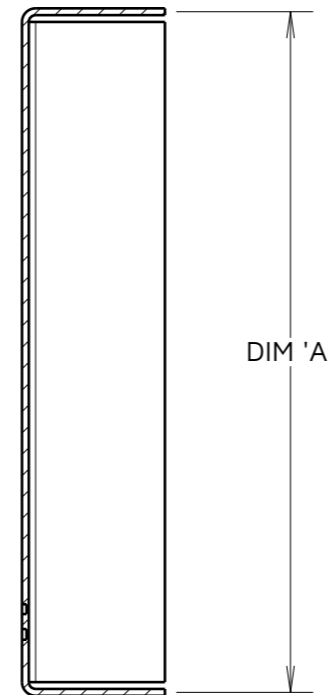
NOT TO SCALE

THIRD ANGLE PROJECTION

ALL DIMENSIONS IN mm

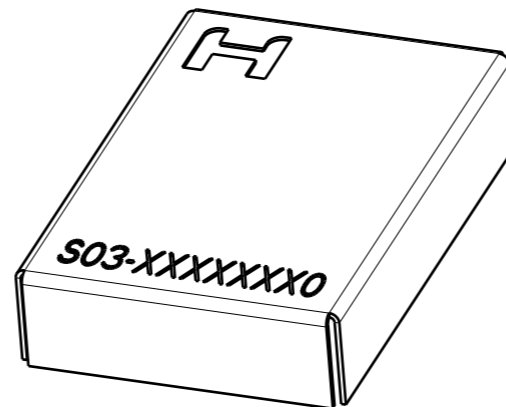
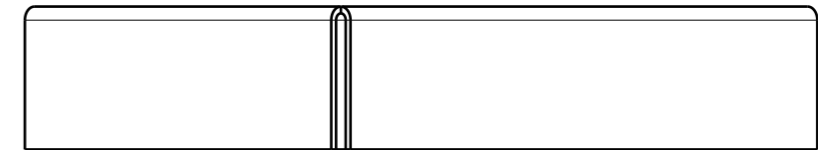
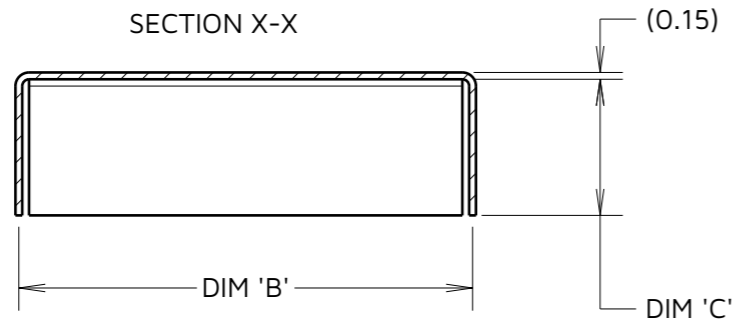


SECTION Y-Y



VIEW SHOWING CORNER OF THE SHIELD CAN

SECTION X-X



**NOTES:**

1. DIM 'C', HEIGHT OF THE CAN IS FROM THE BOTTOM EDGE TO THE INSIDE OF THE TOP FACE.
2. BOTH DIM 'A' AND 'B' ARE FROM THE CENTRE OF THE MATERIAL THICKNESS.
3. SHIELD CAN IS RECOMMENDED FOR USE WITH RFI SHIELD CLIPS: S0911-46R, S1001-46R, S0941-46R, S0961-46R AND S1721-46R.
4. SHIELD CANS ARE SUPPLIED IN CUT STRIPS OF TAPE. FOR PACKAGING DETAILS, SEE SHEET 4.

**ORDER CODE:**

**S03-XXXXXXXXXO**

**SIZE:**

DIM 'A' = LENGTH  
 DIM 'B' = WIDTH  
 DIM 'C' = HEIGHT

**FINISH:**

O = UNPLATED FINISH

|                     |      |          |       |
|---------------------|------|----------|-------|
| AB                  | 2    | 30.04.24 | 33993 |
| NAME                | ISS. | DATE     | CN/CO |
| APPROVED: A.BOXALL  |      |          |       |
| CHECKED: R.PORTLOCK |      |          |       |
| DRAWN: R.PORTLOCK   |      |          |       |
| ASSEMBLY DRG:       |      |          |       |

| PART No.     | DIM 'A' | DIM 'B' | DIM 'C' |
|--------------|---------|---------|---------|
| S03-10100300 | 10.0    | 10.0    | 3.0     |
| S03-15100300 | 15.0    | 10.0    | 3.0     |
| S03-30100300 | 30.0    | 10.0    | 3.0     |

**HARWIN**

www.harwin.com

**TOLERANCES**  
 X. = ±1mm  
 X.X = ±0.50mm  
 X.XX = ±0.20mm  
 X.XXX = ±0.01mm  
 ANGLES = ±5°  
 UNLESS STATED

THIS DRAWING AND ANY INFORMATION OR DESCRIPTIVE MATTER SET OUT HEREON ARE CONFIDENTIAL AND COPYRIGHT PROPERTY OF THE HARWIN GROUP AND MUST NOT BE DISCLOSED, LOANED, COPIED OR USED FOR MANUFACTURING, TENDERING OR FOR ANY OTHER PURPOSE WITHOUT THEIR WRITTEN PERMISSION.

**MATERIAL:**  
 NICKEL SILVER, HALF HARD NS106, TO BS1653 0.15mm THICK

**TITLE:**  
 EMC SHIELD CAN

**DRAWING NUMBER:**  
 S03-XXXXXXXXXO

# Customer Information Sheet

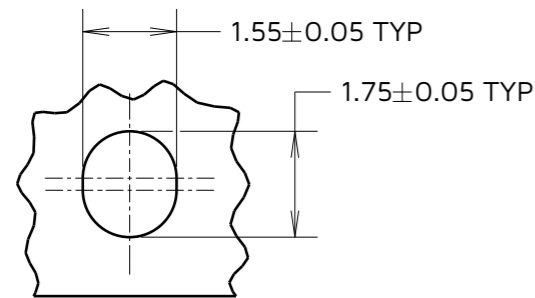
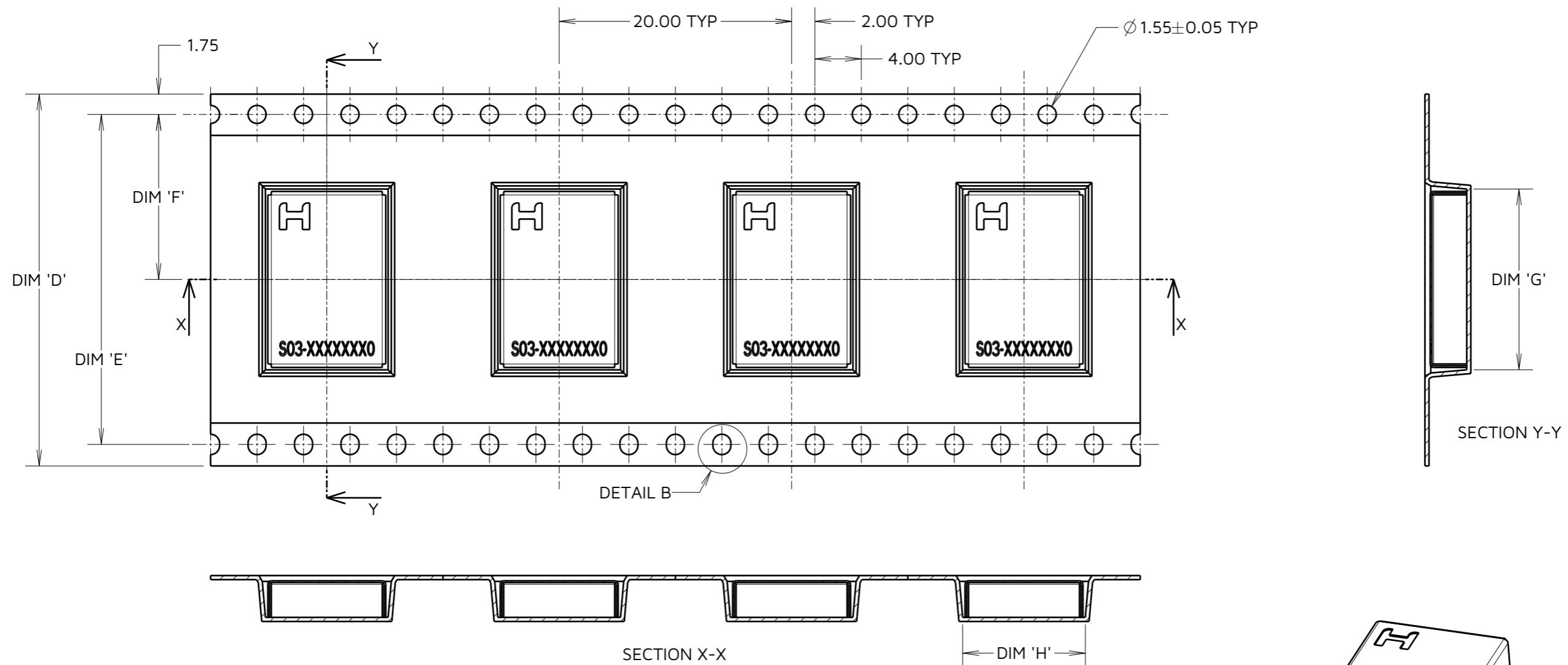
IF IN DOUBT - ASK

©

NOT TO SCALE

THIRD ANGLE PROJECTION

ALL DIMENSIONS IN mm



DETAIL 'B'

ORDER CODE:

S03-XXXXXXO

SIZE:

DIM 'A' = LENGTH

DIM 'B' = WIDTH

DIM 'C' = HEIGHT

FINISH:

0 = UNPLATED FINISH

| PART No.     | DIM 'D'    | DIM 'E' | DIM 'F'    | DIM 'G' | DIM 'H' |
|--------------|------------|---------|------------|---------|---------|
| S03-10100300 | 32.00±0.30 | 28.40   | 14.20±0.15 | 10.55   | 10.55   |
| S03-15100300 | 32.00±0.30 | 28.40   | 14.20±0.15 | 15.55   | 10.55   |
| S03-30100300 | 44.00±0.30 | 40.40   | 20.20±0.15 | 30.55   | 10.55   |

|                     |      |          |       |
|---------------------|------|----------|-------|
| AB                  | 2    | 30.04.24 | 33993 |
| NAME                | ISS. | DATE     | CN/CO |
| APPROVED: A.BOXALL  |      |          |       |
| CHECKED: R.PORTLOCK |      |          |       |
| DRAWN: R.PORTLOCK   |      |          |       |
| ASSEMBLY DRG:       |      |          |       |

NOTES:

- COMPONENTS ARE SUPPLIED IN STRIPS OF TAPE. SUPPLIED QUANTITY MAY CONSIST OF MORE THAN ONE STRIP. STRIP LENGTH MAY VARY.
- LARGE QTY'S MAY BE SHIPPED ON A REEL AND MAY NOT HAVE A LEADER.

**HARWIN**

www.harwin.com

TOLERANCES

- X. = ±1mm
- X.X = ±0.50mm
- X.XX = ±0.20mm
- X.XXX = ±0.01mm
- ANGLES = ±5°
- UNLESS STATED

THIS DRAWING AND ANY INFORMATION OR DESCRIPTIVE MATTER SET OUT HEREON ARE CONFIDENTIAL AND COPYRIGHT PROPERTY OF THE HARWIN GROUP AND MUST NOT BE DISCLOSED, LOANED, COPIED OR USED FOR MANUFACTURING, TENDERING OR FOR ANY OTHER PURPOSE WITHOUT THEIR WRITTEN PERMISSION.

MATERIAL:

SEE SHEET 3

TITLE:

**EMC SHIELD CAN**

DRAWING NUMBER:

S03-XXXXXXO

SHT  
4 OF  
4