

Customer Information Sheet

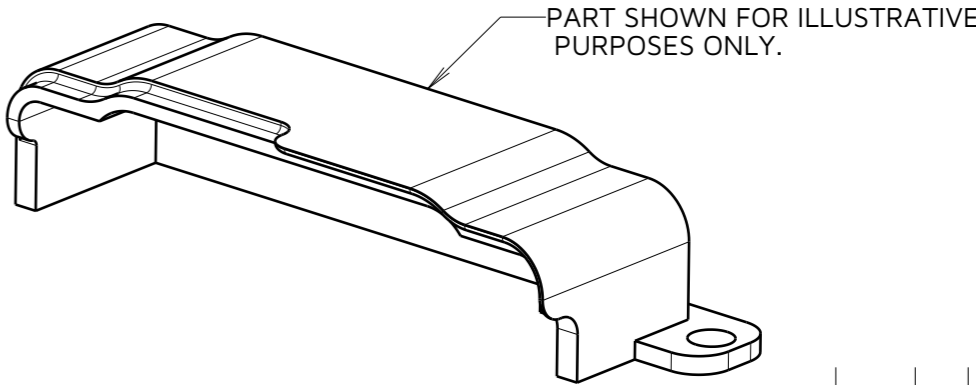
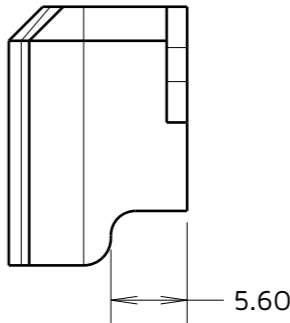
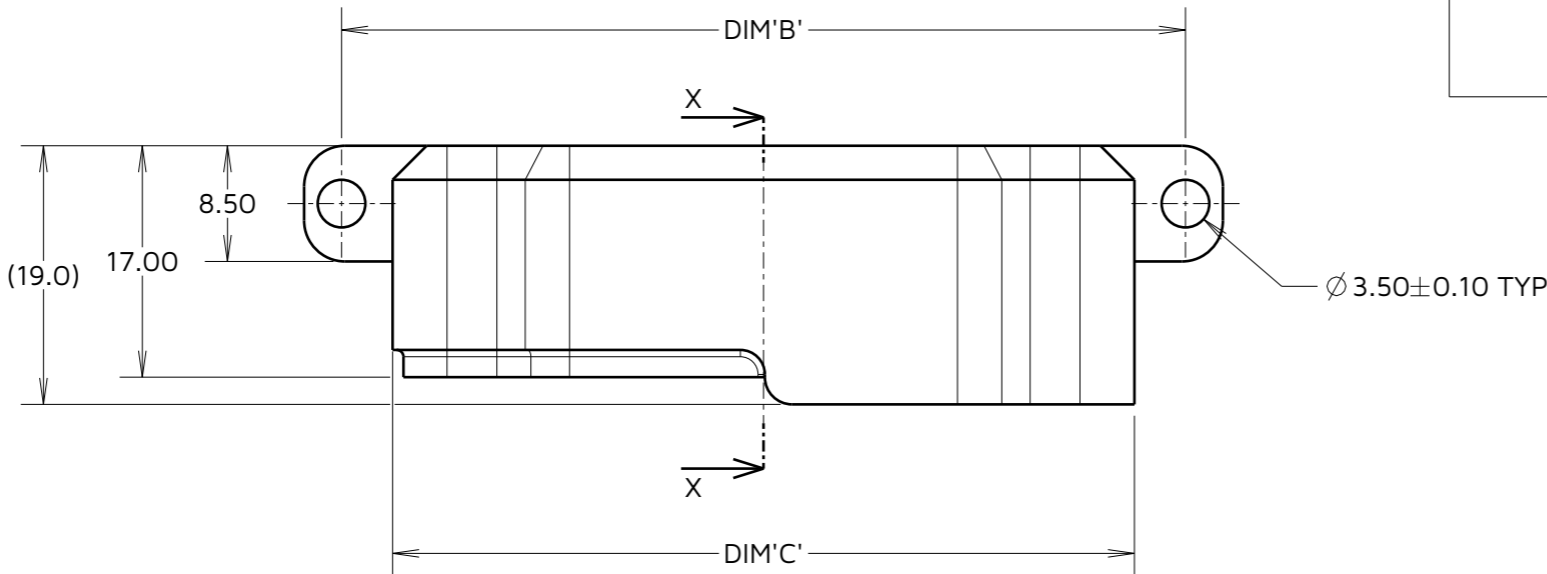
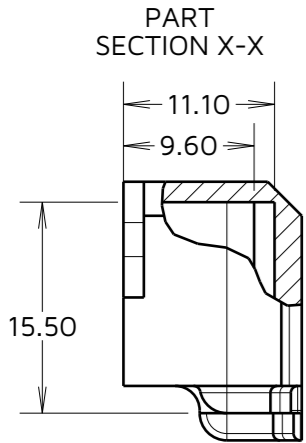
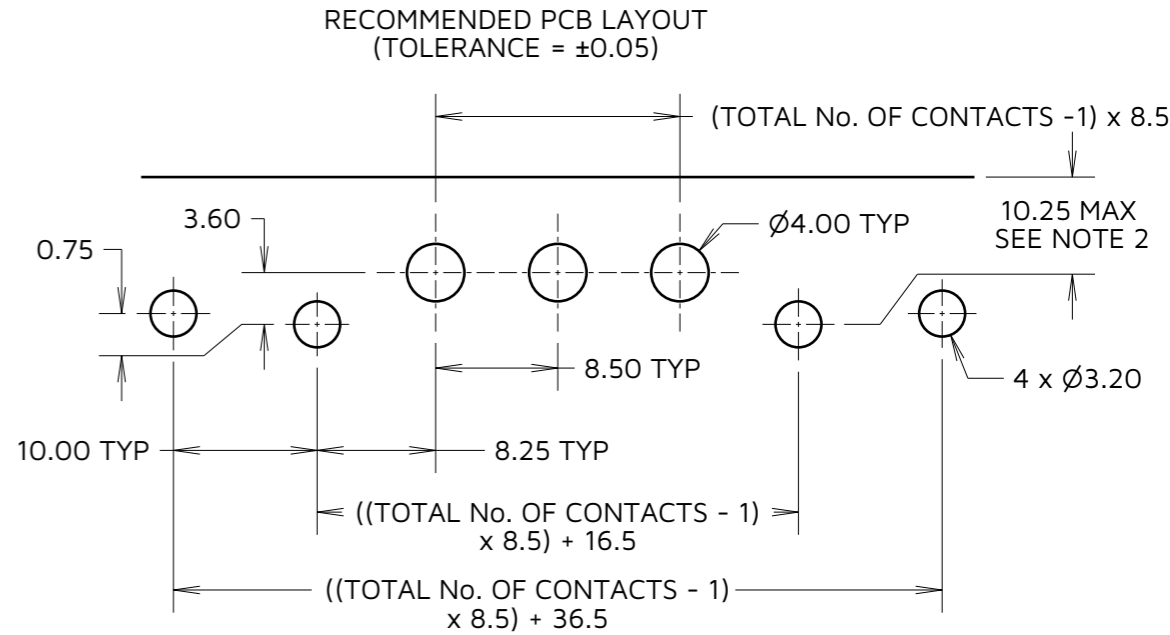
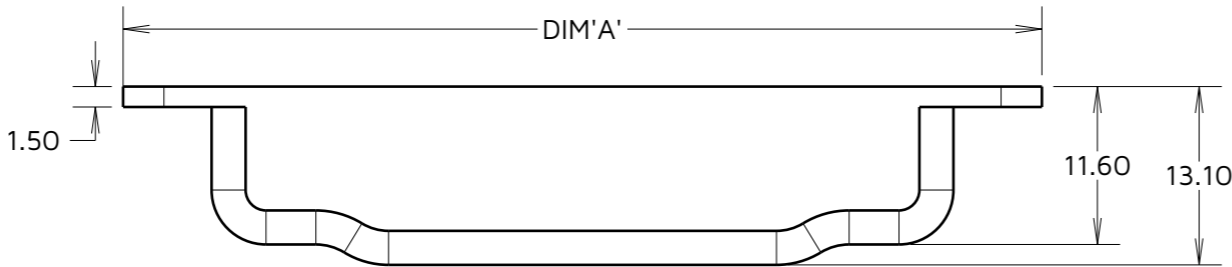
IF IN DOUBT - ASK

©

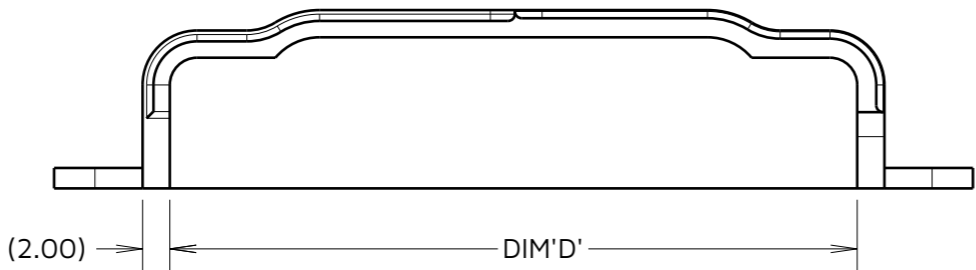
NOT TO SCALE

THIRD ANGLE PROJECTION

ALL DIMENSIONS IN mm



ORDER CODE:
KA1-960XX02
TOTAL No. OF CONTACTS —
02, 03, 04



- NOTES:
- LAYOUTS ONLY FOR BACKSHELL MOUNTING, FOR CONNECTOR PCB LAYOUT SEE COMPONENT DRAWING.
 - MAXIMUM DISTANCE FROM EDGE OF BOARD WHEN PAIRING WITH SHIELDED CABLE.
 - MOUNTING HARDWARE NOT PROVIDED, M3 FIXINGS WITH 5.7mm MAX BOLT HEAD DIAMETER RECOMMENDED.
 - METAL SHELL SUITABLE FOR THE FOLLOWING KONA SERIES CONNECTORS:
KAI-MH1XX05M3

PART NUMBER	DIM 'A'	DIM 'B'	DIM 'C'	DIM 'D'
KA1-9600202	50.50	45.00	37.50	33.50
KA1-9600302	59.00	53.50	46.00	42.00
KA1-9600402	67.50	62.00	54.50	50.50

FC	1	07.09.23	32981
NAME	ISS.	DATE	CN/CO
APPROVED: M.G.PLESTED			
CHECKED: R.PORTLOCK			
DRAWN: F.CHRISPINE			
ASSEMBLY DRG: SEE TABLE			
-			

HARWIN

www.harwin.com

TOLERANCES
X. = $\pm 1\text{mm}$
X.X = $\pm 0.50\text{mm}$
X.XX = $\pm 0.20\text{mm}$
X.XXX = $\pm 0.01\text{mm}$
ANGLES = $\pm 5^\circ$
UNLESS STATED

THIS DRAWING AND ANY INFORMATION OR DESCRIPTIVE MATTER SET OUT HEREON ARE CONFIDENTIAL AND COPYRIGHT PROPERTY OF THE HARWIN GROUP AND MUST NOT BE DISCLOSED, LOANED, COPIED OR USED FOR MANUFACTURING, TENDERING OR FOR ANY OTHER PURPOSE WITHOUT THEIR WRITTEN PERMISSION.

MATERIAL:

SEE COMPONENT SPECIFICATION C052XX (LATEST ISSUE)

TITLE:
KONA HORIZONTAL METAL BACKSHELL

DRAWING NUMBER:
KA1-960XX02

SHT
3
OF
3