

# Customer Information Sheet

IF IN DOUBT - ASK

©

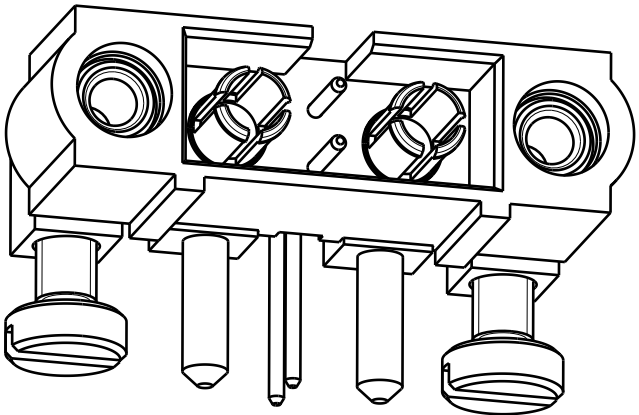
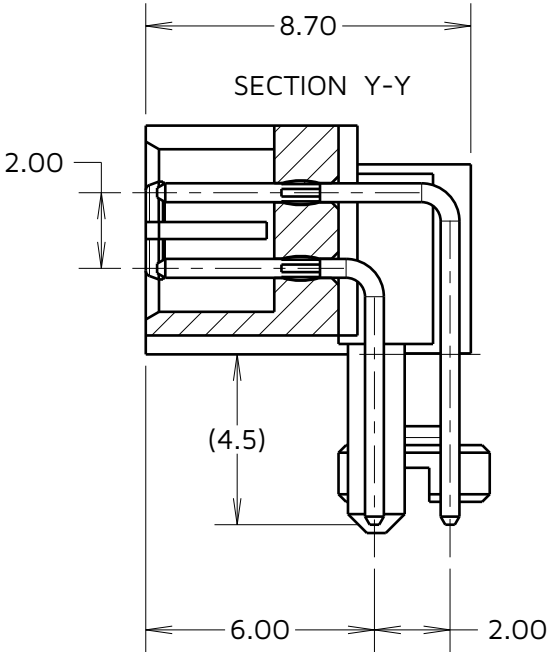
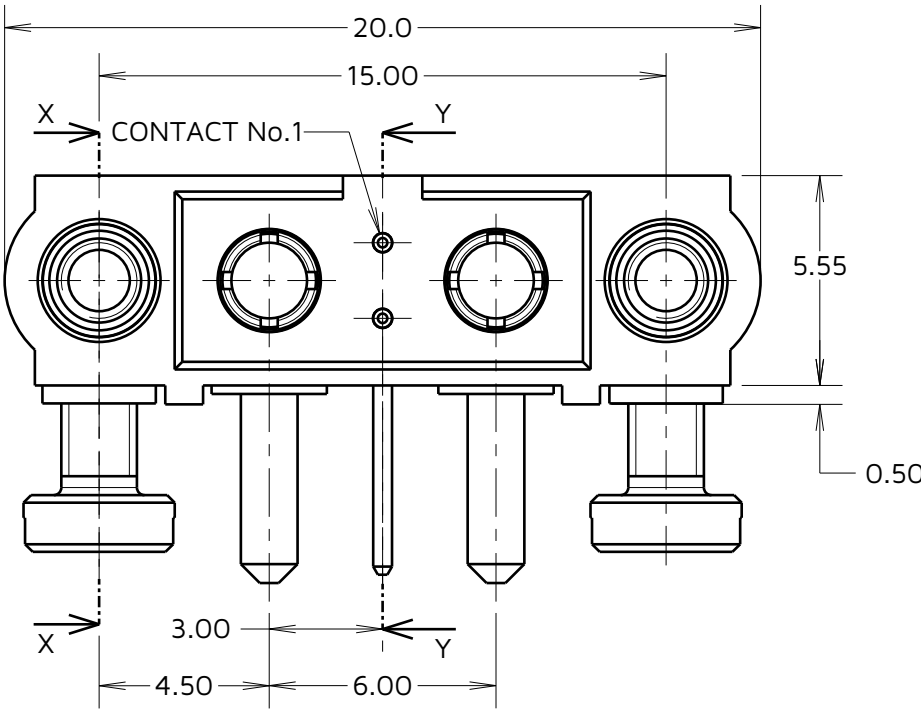
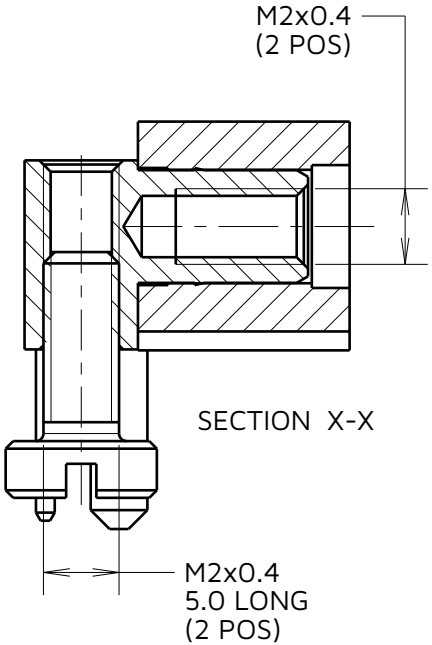
NOT TO SCALE

THIRD ANGLE PROJECTION

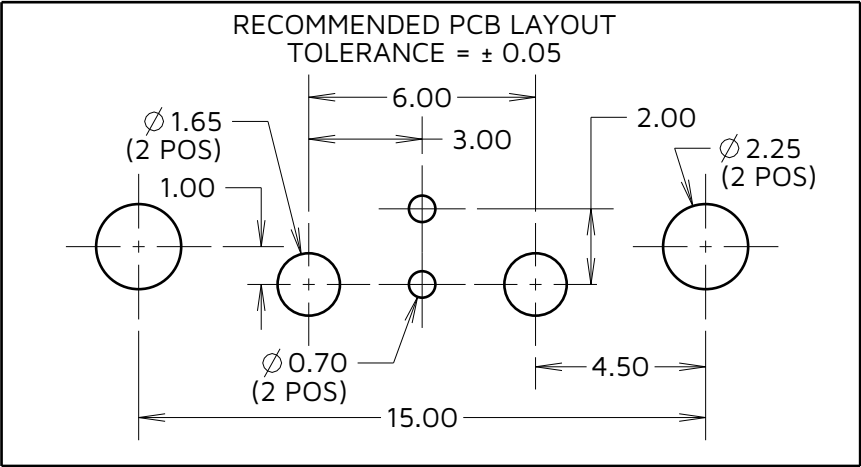
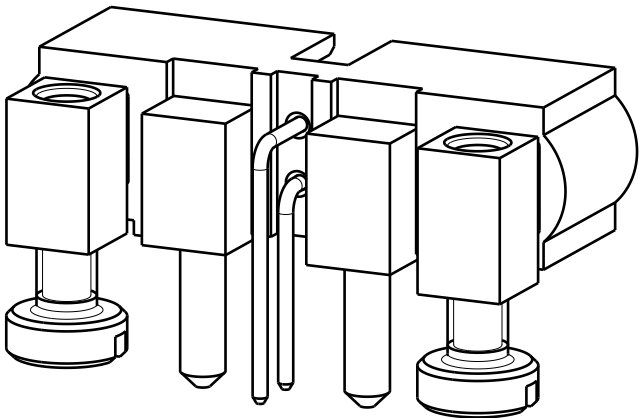
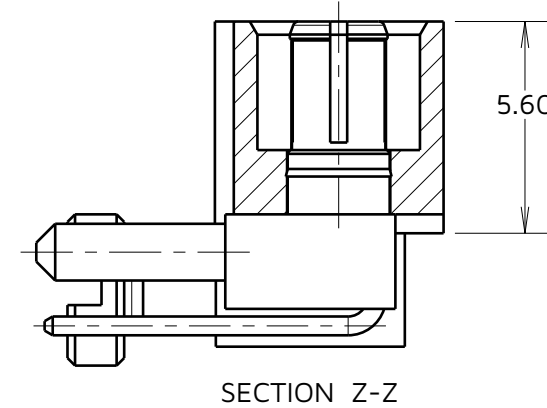
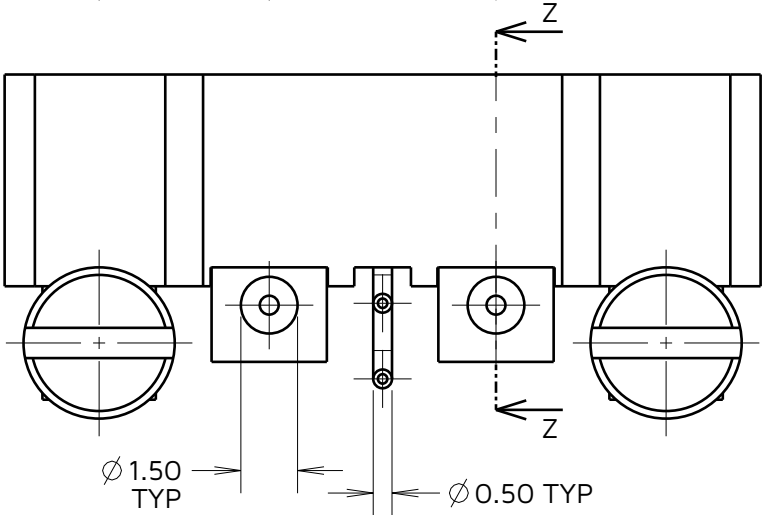
ALL DIMENSIONS IN mm

## SPECIFICATIONS:

MATERIAL:  
HOUSING: GLASS FILLED PPS, UL94V-0, BLACK  
SIGNAL CONTACT: PHOSPHOR BRONZE  
POWER CONTACT: COPPER ALLOY  
BOARD-MOUNT JACKSCREW, SCREW: STAINLESS STEEL  
FINISH:  
SIGNAL CONTACT:  
GOLD ON CONTACT AREA,  
90/10 TIN/LEAD ON TAILS  
POWER CONTACT: GOLD  
PACKING:  
TUBE  
FOR COMPLETE SPECIFICATION SEE COMPONENT  
SPECIFICATION C005XX (LATEST ISSUE)



COMPLETE ASSEMBLY SHOWN  
FOR ILLUSTRATION ONLY



HARWIN

www.harwin.com

TOLERANCES  
X. =  $\pm 1\text{mm}$   
X.X =  $\pm 0.50\text{mm}$   
X.XX =  $\pm 0.20\text{mm}$   
X.XXX =  $\pm 0.01\text{mm}$   
ANGLES =  $\pm 5^\circ$   
UNLESS STATED

THIS DRAWING AND ANY  
INFORMATION OR DESCRIPTIVE  
MATTER SET OUT HEREON ARE  
CONFIDENTIAL AND COPYRIGHT  
PROPERTY OF THE HARWIN GROUP  
AND MUST NOT BE DISCLOSED,  
LOANED, COPIED OR USED FOR  
MANUFACTURING, TENDERING OR FOR  
ANY OTHER PURPOSE WITHOUT THEIR  
WRITTEN PERMISSION.

MATERIAL & FINISH:  
  
SEE ABOVE

TITLE: JACKSCREW DATAMATE  
MIXED TECHNOLOGY HORZ PC TAIL  
MALE ASSEMBLY (BOARD MOUNT)

DRAWING NUMBER:  
M80-5L20222M5-01-334-01-334

SHT  
2  
OF  
2

NOTES:  
1. SCREWS ARE SUPPLIED LOOSE IN A BAG, NOT ASSEMBLED AS SHOWN

MJ	3	22.11.24	34803
NAME	ISS.	DATE	CN/CO
APPROVED: M. JELLEY			
CHECKED: R. ALEXANDER			
DRAWN: M. G. PLESTED			