

Customer Information Sheet

IF IN DOUBT - ASK



NOT TO SCALE

THIRD ANGLE PROJECTION

ALL DIMENSIONS IN mm

TABLE 1: CONFIGURATIONS & BILL OF MATERIALS

ORDER CODE CONFIGURATIONS												BOM ITEM No.															
												1		2		3		4		5		6		7		8	
G125-XXX08XX-XXXX-XXXXXX												CONNECTOR 1 (SEE ORDER CODE FOR TOTAL No. OF CONTACTS)		CONNECTOR 1 SIGNAL CONTACT (SEE ORDER CODE FOR QTY.)		CONNECTOR 1 POWER CONTACT (SEE ORDER CODE FOR QTY.)		SIGNAL WIRE SEE NOTE 1		POWER WIRE SEE NOTE 1		CONNECTOR 2 SIGNAL CONTACT (SEE ORDER CODE FOR QTY.)		CONNECTOR 2 POWER CONTACT (SEE ORDER CODE FOR QTY.)		CONNECTOR 2 (SEE ORDER CODE FOR TOTAL No. OF CONTACTS)	
G125	-	FC FD		1 2	08	05 98 99	F1 F2 F3 F5		1B1B 2B2B	-XXXX	F1 F2 F3 F5	G125-22496F1-01-08-01 G125-22496F1-02-08-02 G125-22496F2-01-08-01 G125-22496F2-02-08-02 G125-22396F3-01-08-01 G125-22496F3-02-08-02 G125-22496F5-01-08-01 G125-22496F5-02-08-02		FEMALE SIGNAL 26AWG: G125-0010005 x8		FEMALE POWER 18AWG: G125-0500005		SIGNAL WIRE 26AWG & 28AWG: WHITE/BLACK/RED WIRE TWISTED PAIR: 2 TPI: 26AWG & 28AWG WHITE & RED 3TPI: 26AWG & 28AWG WHITE & GREEN (SEE TABLE 2 ON SHEET 8)		POWER WIRE 18AWG: WHITE WIRE		FEMALE SIGNAL 26AWG: G125-0010005 x8		FEMALE POWER 18AWG: G125-0500005		G125-22496F1-01-08-01 G125-22496F1-02-08-02 G125-22496F2-01-08-01 G125-22496F2-02-08-02 G125-22396F3-01-08-01 G125-22496F3-02-08-02 G125-22496F5-01-08-01 G125-22496F5-02-08-02	
												G125-32496M1-01-08-01 G125-32496M1-02-08-02 G125-32496M2-01-08-01 G125-32496M2-02-08-02 G125-32496M3-01-08-01 G125-32496M3-02-08-02 G125-32496M5-01-08-01 G125-32496M5-02-08-02														G125-32496M1-01-08-01 G125-32496M1-02-08-02 G125-32496M2-01-08-01 G125-32496M2-02-08-02 G125-32496M3-01-08-01 G125-32496M3-02-08-02 G125-32496M5-01-08-01 G125-32496M5-02-08-02	
		MC MD					MC MD				M1 M2 M3 M5		1D1D 2D2D		-XXXX	F1 F2 F3 F5	G125-32496M1-01-08-01 G125-32496M1-02-08-02 G125-32496M2-01-08-01 G125-32496M2-02-08-02 G125-32496M3-01-08-01 G125-32496M3-02-08-02 G125-32496M5-01-08-01 G125-32496M5-02-08-02		28AWG: G125-1020005 x8		28AWG: G125-1500005		28AWG: G125-1020005 x8		28AWG: G125-1020005 x8		28AWG: G125-1020005 x8
G125-32496M1-01-08-01 G125-32496M1-02-08-02 G125-32496M2-01-08-01 G125-32496M2-02-08-02 G125-32496M3-01-08-01 G125-32496M3-02-08-02 G125-32496M5-01-08-01 G125-32496M5-02-08-02				28AWG: G125-1020005 x8		28AWG: G125-1500005			28AWG: G125-1020005 x8								28AWG: G125-1020005 x8		28AWG: G125-1020005 x8								

- NOTES:
- FOR COMPLETE SPECIFICATION, INCLUDING WIRE TYPE, GAUGE AND POTTING COMPOUND SEE COMPONENT SPECIFICATIONS C125XX & C049XX (LATEST ISSUES).
 - SEE SHEET 9 FOR HARDWARE FIXING INFORMATION.
 - FOR ALL HOUSING DIMENSIONS, SEE RESPECTIVE DRAWINGS FOR BOM ITEMS 1 & 8.
 - CABLE ASSEMBLIES ARE PACKED IN BAGS.
 - CUSTOM LENGTH CABLE ASSEMBLIES CAN BE PRODUCED FROM 60mm TO 9999mm. CABLE LENGTH LESS THAN 60mm IS POSSIBLE, BUT MUST BE ENQUIRED.
 - POSSIBLE CONFIGURATIONS:
FEMALE-TO-FEMALE,
MALE-TO-FEMALE,
MALE-TO-MALE.
 - WIRING OF CONNECTOR:
CONTACT 1 TO CONTACT 1,
CONTACT 2 TO CONTACT 2,
CONTACT A TO CONTACT A,
CONTACT B TO CONTACT B, ETC.
 - IF ASSEMBLY IS MALE-TO-FEMALE, MALE CONENCTOR MUST BE SPECIFIED IN THE PART NUMBER FIRST.

ORDER CODE:

G125-XXX08XXXX-XXXX-XXXXXX

CONNECTOR:

F = FEMALE
M = MALE

WIRING STYLE:

C = STANDARD WIRE
D = TWISTED PAIR

SIGNAL WIRE GAUGE:

1 = 26AWG
2 = 28AWG

WIRE COLOUR:

05 = WHITE
98 = BLACK
99 = RED

CONNECTOR 2 FIXING STYLE:

F1/F2/F3/F5/M1/M2/M3/M5

DIM 'A' LENGTH:

0060 = 60mm MIN
(SEE NOTE 5)
9999 = 9999mm MAX

POWER CONTACTS:

1B1B/1D1D = 2 POWER CONTACTS
2B2B/2D2D = 4 POWER CONTACTS

CONNECTOR FIXING STYLE:

F1/F2/F3/F5/M1/M2/M3/M5

HARWIN

www.harwin.com

TOLERANCES

X. = $\pm 1\text{mm}$
X.X = $\pm 0.50\text{mm}$
X.XX = $\pm 0.20\text{mm}$
X.XXX = $\pm 0.01\text{mm}$

ANGLES = $\pm 5^\circ$
UNLESS STATED

THIS DRAWING AND ANY INFORMATION OR DESCRIPTIVE MATTER SET OUT HEREON ARE CONFIDENTIAL AND COPYRIGHT PROPERTY OF THE HARWIN GROUP AND MUST NOT BE DISCLOSED, LOANED, COPIED OR USED FOR MANUFACTURING, TENDERING OR FOR ANY OTHER PURPOSE WITHOUT THEIR WRITTEN PERMISSION.

MATERIAL:

SEE ABOVE

TITLE:

GECKO-MT DOUBLE-ENDED
CABLE ASSEMBLY

DRAWING NUMBER:

G125-XXX08XXXX-XXXX-XXXXXX

SHT
6
OF
9

RTP	2	27.02.25	35745
NAME	ISS.	DATE	CN/CO
APPROVED:		R.PORTLOCK	
CHECKED:		A.YEOMANS	
DRAWN:		R.PORTLOCK	
ASSEMBLY DRG:			

Customer Information Sheet

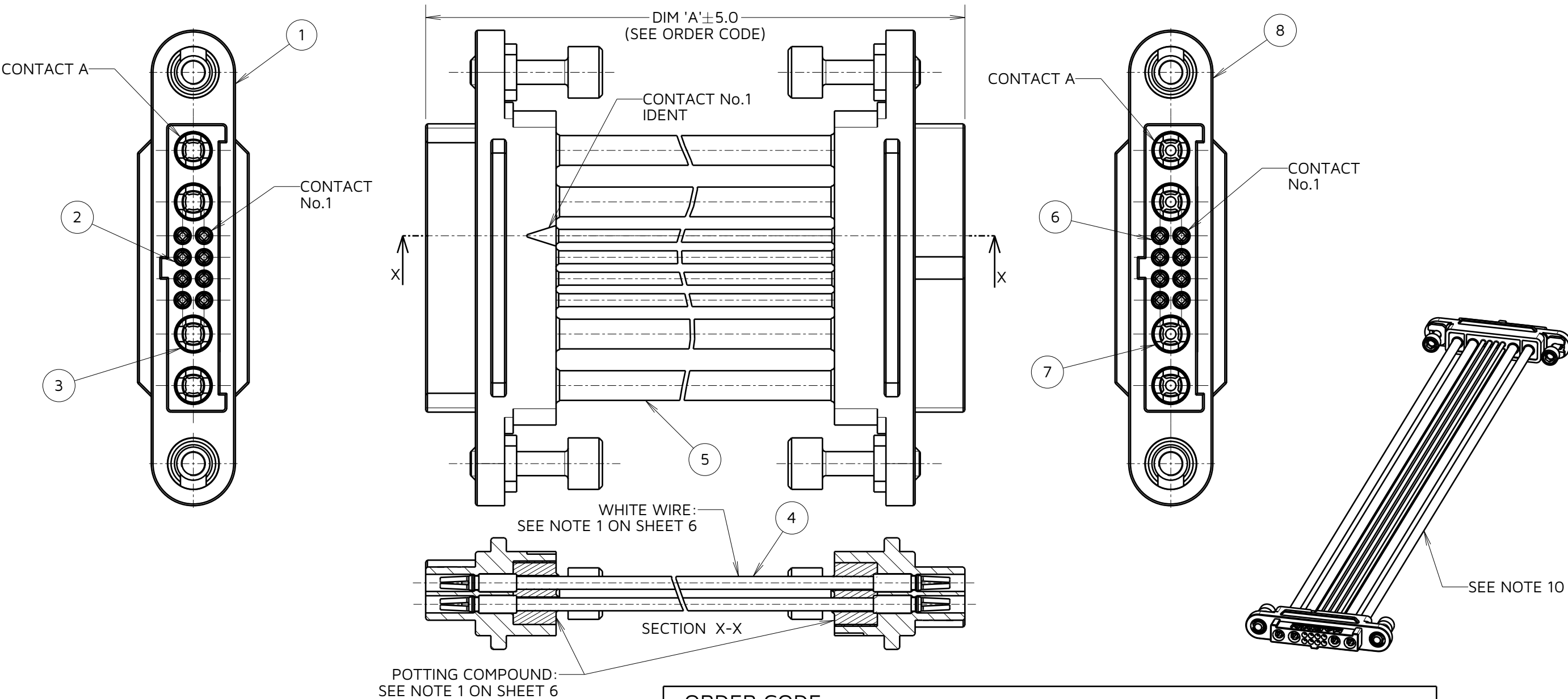
IF IN DOUBT - ASK

©

NOT TO SCALE

THIRD ANGLE PROJECTION

ALL DIMENSIONS IN mm



EXAMPLE SHOWN: FEMALE-TO-FEMALE
STANDARD WIRING
G125-FC10805F1-2B2B-0150F1

ORDER CODE:

G125-XXX08XXXX-XXXX-XXXXXX

CONNECTOR:
F = FEMALE
M = MALE

WIRING STYLE:
C = STANDARD WIRE
D = TWISTED PAIR

SIGNAL WIRE GAUGE:
1 = 26AWG
2 = 28AWG

WIRE COLOUR:
05 = WHITE
98 = BLACK
99 = RED

CONNECTOR 2 FIXING STYLE:
F1/F2/F3/F5/M1/M2/M3/M5

DIM 'A' LENGTH:
0060 = 60mm MIN
(SEE NOTE 5)
9999 = 9999mm MAX

POWER CONTACTS:
1B1B/1D1D = 2 POWER CONTACTS
2B2B/2D2D = 4 POWER CONTACTS

CONNECTOR FIXING STYLE:
F1/F2/F3/F5/M1/M2/M3/M5

NOTES:
9. FOR POSSIBLE COMBINATIONS, SEE BOM TABLE ON SHEET 6.
10. ASSEMBLY SHOWN FOR ILLUSTRATIVE PURPOSES ONLY.
SEE ORDER CODE FOR PART NUMBER.

HARWIN

www.harwin.com

TOLERANCES
X. = ±1mm
X.X = ±0.50mm
X.XX = ±0.20mm
X.XXX = ±0.01mm
ANGLES = ±5°
UNLESS STATED

THIS DRAWING AND ANY
INFORMATION OR DESCRIPTIVE
MATTER SET OUT HEREON ARE
CONFIDENTIAL AND COPYRIGHT
PROPERTY OF THE HARWIN GROUP
AND MUST NOT BE DISCLOSED,
LOANED, COPIED OR USED FOR
MANUFACTURING, TENDERING OR FOR
ANY OTHER PURPOSE WITHOUT THEIR
WRITTEN PERMISSION.

MATERIAL:
SEE SHEET 6

TITLE:
GECKO-MT DOUBLE-ENDED
CABLE ASSEMBLY

DRAWING NUMBER:
G125-XXX08XXXX-XXXX-XXXXXX

SHT
7
OF
9

RTP	2	27.02.25	35745
NAME	ISS.	DATE	CN/CO
APPROVED:	R.PORTLOCK		
CHECKED:	A.YEOMANS		
DRAWN:	R.PORTLOCK		
ASSEMBLY DRG:			

Customer Information Sheet

IF IN DOUBT - ASK

©

NOT TO SCALE

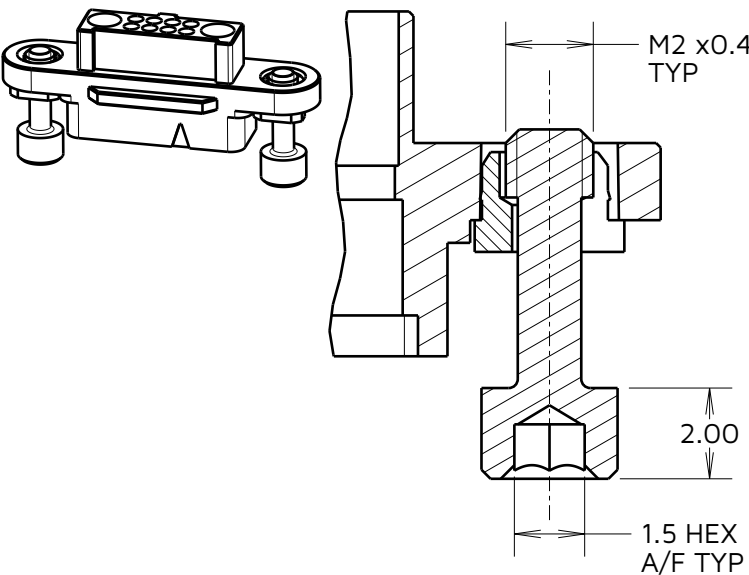
THIRD ANGLE PROJECTION

ALL DIMENSIONS IN mm

FIXING STYLES

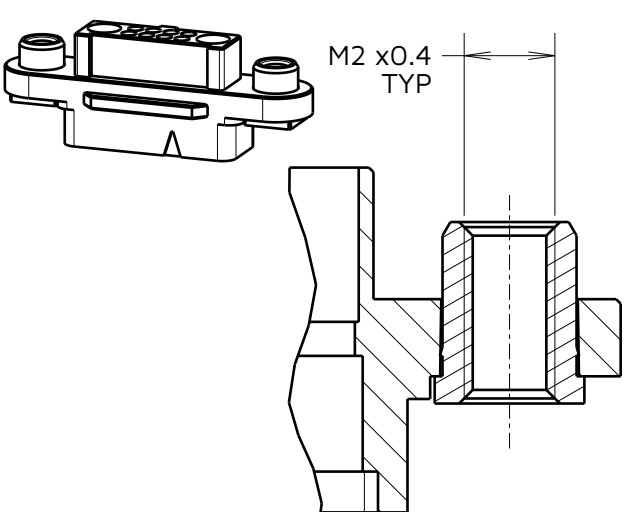
F1 - SCREW LOCK

EXAMPLE: G125-22496F1-01-08-01



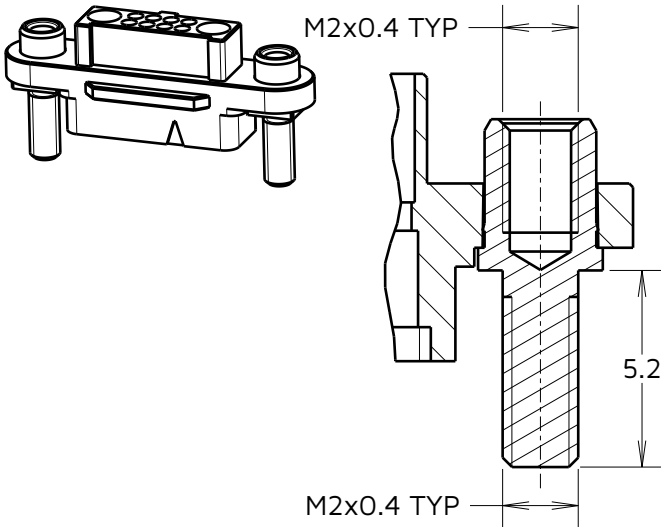
F2 - REVERSE FIX

EXAMPLE: G125-22496F2-01-08-01



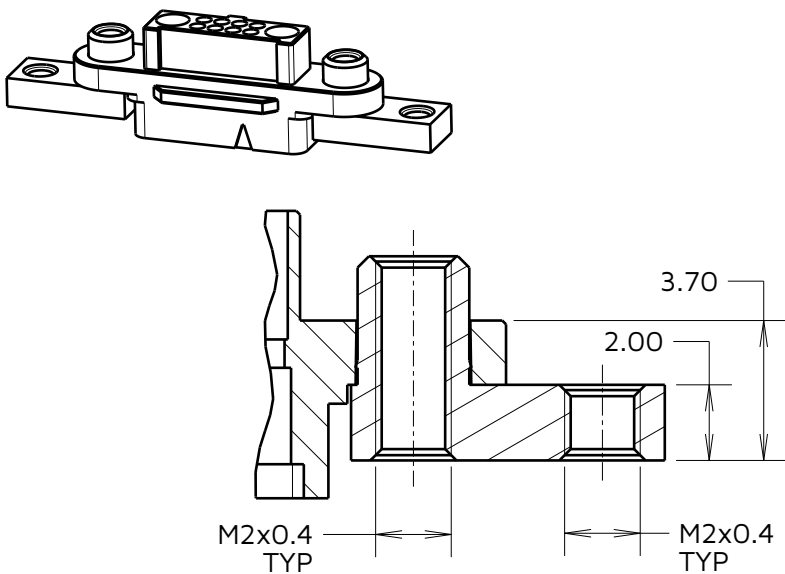
F3 - REVERSE FIX PANEL

EXAMPLE: G125-22496F3-01-08-01



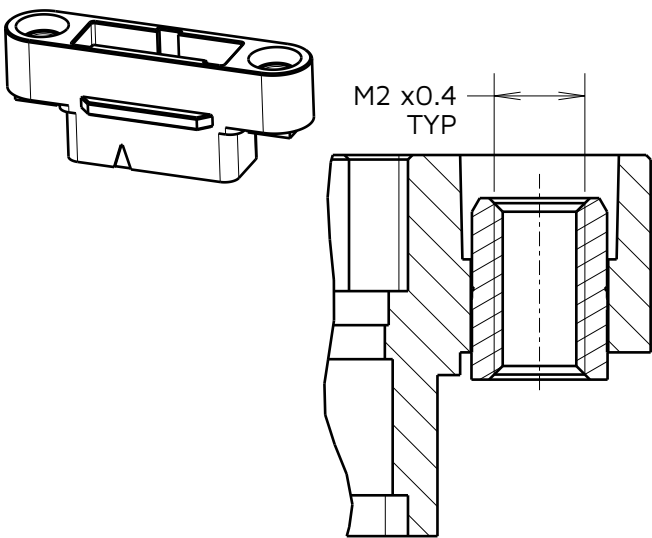
F5 - REAR PANEL MOUNT

EXAMPLE: G125-22496F5-01-08-01



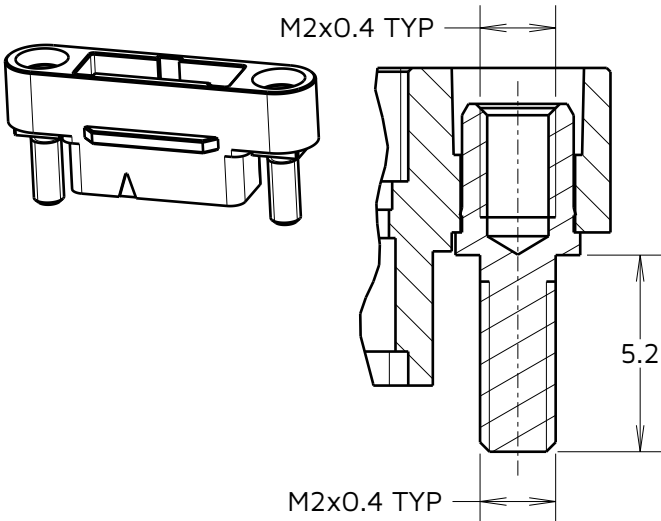
M1 - SCREW LOCK

EXAMPLE: G125-32496M1-01-08-01



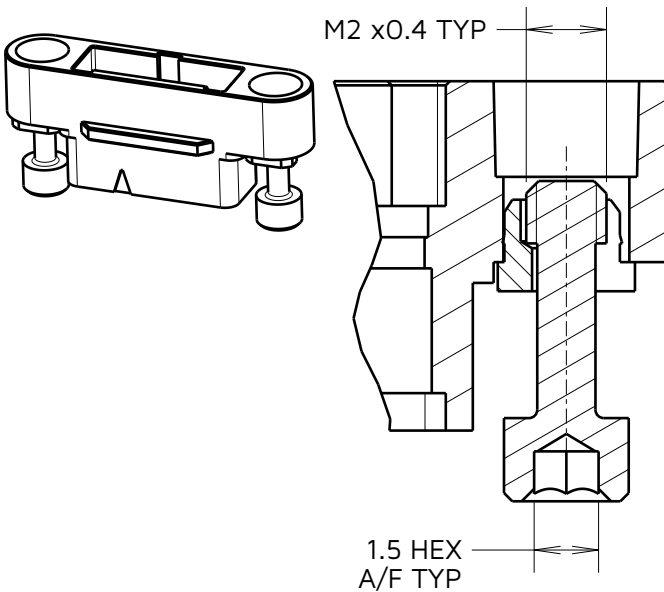
M2 - REVERSE FIX PANEL

EXAMPLE: G125-32496M2-01-08-01



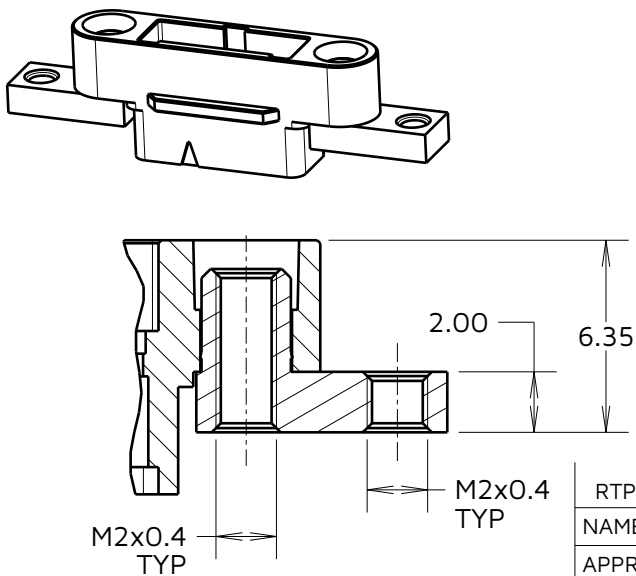
M3 - REVERSE FIX

EXAMPLE: G125-32496M3-01-08-01



M5 - REVERSE PANEL MOUNT

EXAMPLE: G125-32496M5-01-08-01



NOTES:
13. SEE BILL OF MATERIALS TABLE ON SHEET 6 AND ORDER CODE FOR FIXING IDENTIFICATION.

HARWIN

www.harwin.com

TOLERANCES
X. = $\pm 1\text{mm}$
X.X = $\pm 0.50\text{mm}$
X.XX = $\pm 0.20\text{mm}$
X.XXX = $\pm 0.01\text{mm}$
ANGLES = $\pm 5^\circ$
UNLESS STATED

THIS DRAWING AND ANY INFORMATION OR DESCRIPTIVE MATTER SET OUT HEREON ARE CONFIDENTIAL AND COPYRIGHT PROPERTY OF THE HARWIN GROUP AND MUST NOT BE DISCLOSED, LOANED, COPIED OR USED FOR MANUFACTURING, TENDERING OR FOR ANY OTHER PURPOSE WITHOUT THEIR WRITTEN PERMISSION.

MATERIAL:

SEE SHEET 6

TITLE:

GECKO-MT DOUBLE-ENDED
CABLE ASSEMBLY

DRAWING NUMBER:

G125-XXX08XXXX-XXXX-XXXXXX

SHT
9
OF
9

RTP	2	27.02.25	35745
NAME	ISS.	DATE	CN/CO
APPROVED:		R.PORTLOCK	
CHECKED:		A.YEOMANS	
DRAWN:		R.PORTLOCK	
ASSEMBLY DRG:			