

Customer Information Sheet

DRAWING No.: M80-FXXXXXXFX-XXXXFXIF IN DOUBT - ASK©NOT TO SCALETHIRD ANGLE PROJECTIONALL DIMENSIONS IN mm

TABLE 1: BOM AND CONFIGURATIONS																				
ORDER CODE CONFIGURATION											BOM ITEM No.									
											1	2	3	4	5	6	7	8	9	
M80-FXXXXXXFX-XXXXFX											CONNECTOR 1 (SEE ORDER CODE FOR TOTAL No. OF CONTACTS)	CONNECTOR 1 CONTACT (SEE ORDER CODE FOR QTY)	CONNECTOR 1 BACKSHELL (SEE ORDER CODE FOR TOTAL No. OF CONTACTS)	WIRE (SEE C049XX FOR SPEC)	BRAID (SEE C049XX FOR SPEC)	BAND-IT TIES QTY = 2	CONNECTOR 2 BACKSHELL (SEE ORDER CODE FOR TOTAL No. OF CONTACTS)	CONNECTOR 2 CONTACT (SEE ORDER CODE FOR QTY)	CONNECTOR 2 (SEE ORDER CODE FOR TOTAL No. OF CONTACTS)	
M80	-	F	B	I	XX	69 70	F1 F2	-	XXXX	F1 F2	M80-262XX98	M80-2060005	M80-945XX02 M80-946XX02	STANDARD WHITE WIRE: (SEE C049XX) TWISTED PAIRS 2TPI: (SEE C049XX) 3TPI: (SEE C049XX)	SEE C049XX	M80-9470000 M80-9480000	M80-945XX02 M80-946XX02	M80-2060005	M80-262XX98	
												22AWG M80-0110005 24-28AWG M80-0130005		STANDARD WHITE WIRE: (SEE C049XX) TWISTED PAIRS 2TPI: (SEE C049XX) 3TPI: (SEE C049XX)				22AWG M80-0110005 24-28AWG M80-0130005		

- NOTES:
- 1. FOR COMPLETE SPECIFICATION, INCLUDING WIRE TYPE AND GAUGE SEE COMPONENT SPECIFICATIONS C005XX & C049XX (LATEST ISSUES).
 - 2. SEE SHEET 7 FOR ASSEMBLIES WITH STANDARD WIRING CONFIGURATIONS.
 - 3. SEE SHEET 8 FOR ASSEMBLIES WITH TWISTED PAIR WIRING CONFIGURATIONS.
 - 4. SEE SHEET 9 FOR HARDWARE FIXING INFORMATION.
 - 5. WIRING OF CONNECTOR:
CONTACT 1 TO CONTACT 1,
CONTACT 2 TO CONTACT 2,
CONTACT 3 TO CONTACT 3, ETC.
 - 6. FOR ALL HOUSING DIMENSIONS, SEE RESPECTIVE DRAWINGS FOR BOM ITEMS 1 & 9.
 - 7. SIGNAL CONTACT EXTRACTION TOOL = Z80-280

ORDER CODE:

M80-FXXXXXXFX-XXXXFX

CONTACT GAUGE AND TYPE: _____
B1 - 22AWG T-CONTACT (LARGE BORE)
C1 - 22AWG STANDARD (LARGE BORE)
C2 - 24AWG STANDARD (SMALL BORE)
C3 - 26AWG STANDARD (SMALL BORE)
C4 - 28AWG STANDARD (SMALL BORE)

No. OF CONTACTS: _____
XX - 04-50
(EVEN ONLY)

SHIELDING: _____
69 - SHIELDED
70 - SHIELDED & TWISTED

CONNECTOR 2 FIXING STYLE:
F1 - SLOTTED JACKSCREW
F2 - HEX JACKSCREW

DIM 'A' LENGTH:
0060 = 60mm MIN
9999 = 9999mm MAX

CONNECTOR 1 FIXING STYLE:
F1 - SLOTTED JACKSCREW
F2 - HEX JACKSCREW

AB	I	19.12.22	32169
NAME	ISS.	DATE	CN/CO
APPROVED: R.PORTLOCK			
CHECKED: M.RUDKIN			
DRAWN: A.BOXALL			
CUSTOMER REF.:			
ASSEMBLY DRG:			



www.harwin.com
technical@harwin.com

THIS DRAWING AND ANY INFORMATION OR DESCRIPTIVE MATTER SET OUT HEREON ARE CONFIDENTIAL AND COPYRIGHT PROPERTY OF THE HARWIN GROUP AND MUST NOT BE DISCLOSED, LOANED, COPIED OR USED FOR MANUFACTURING, TENDERING OR FOR ANY OTHER PURPOSE WITHOUT THEIR WRITTEN PERMISSION.

TOLERANCES
X. = $\pm 1\text{mm}$
X.X = $\pm 0.50\text{mm}$
X.XX = $\pm 0.20\text{mm}$
X.XXX = $\pm 0.01\text{mm}$

ANGLES = $\pm 5^\circ$

UNLESS STATED

MATERIAL:

SEE ABOVE

FINISH: -

S/AREA: - mm²

TITLE:
M80 DOUBLE ENDED
SHIELDED CABLE ASSEMBLIES

DRAWING NUMBER:
M80-FXXXXXXFX-XXXXFX

SHT
6
OF
9

Customer Information Sheet

DRAWING No.: M80-FXXXXXXXXFX-XXXXFX

IF IN DOUBT - ASK

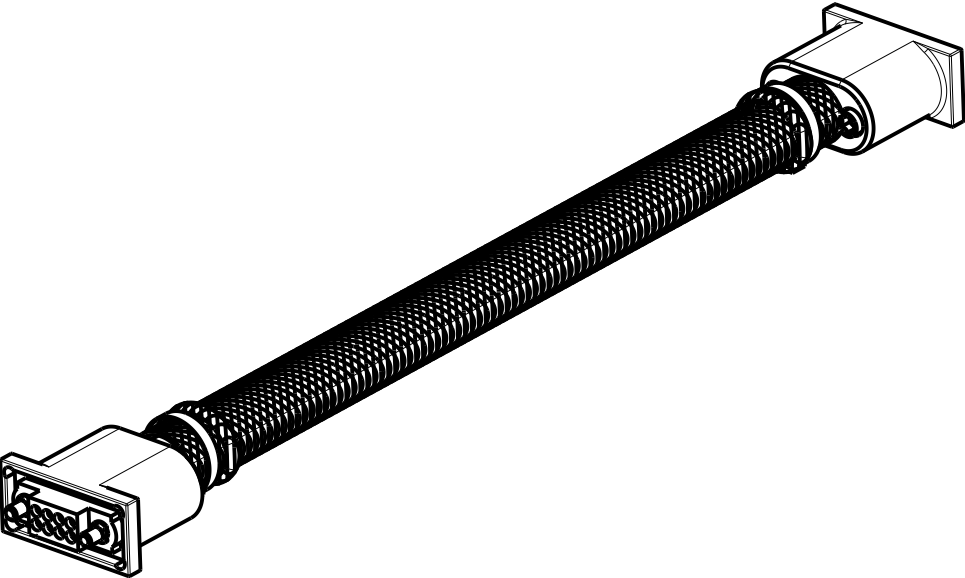
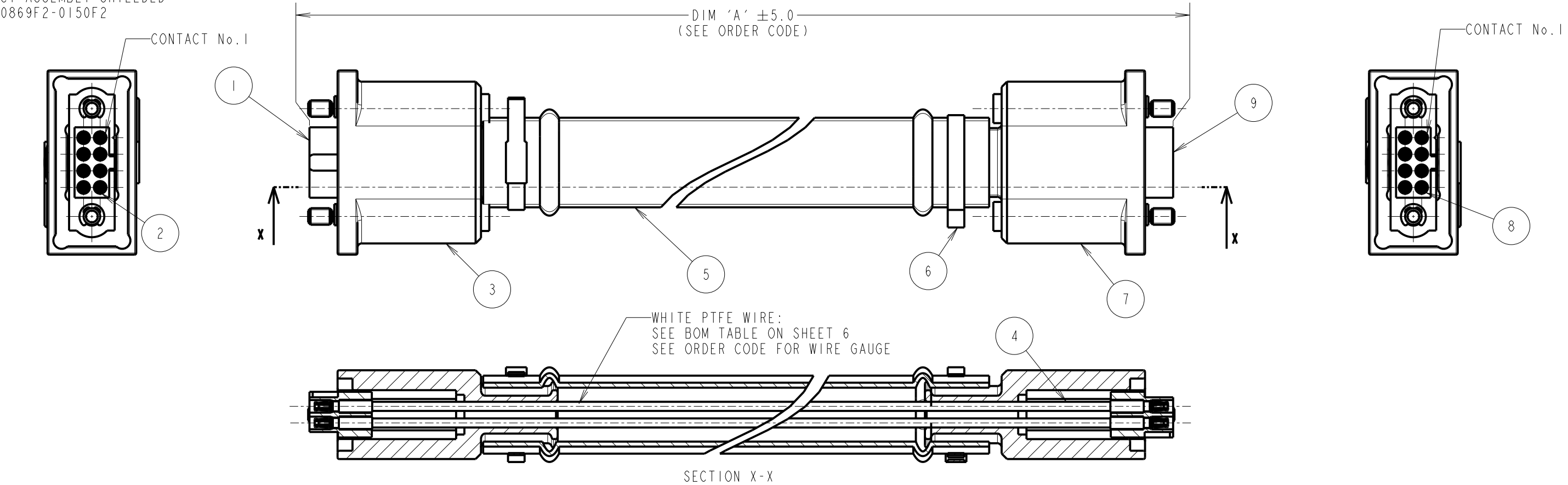
C

NOT TO SCALE

THIRD ANGLE PROJECTION

ALL DIMENSIONS IN mm

EXAMPLE SHOWN:
T-CONTACT ASSEMBLY SHIELDED
M80-FBI0869F2-0150F2



ORDER CODE :

M80-FXXXXXXXXFX-XXXXFX

CONTACT GAUGE AND TYPE:

- B1 - 22AWG T-CONTACT (LARGE BORE)
- C1 - 22AWG STANDARD (LARGE BORE)
- C2 - 24AWG STANDARD (SMALL BORE)
- C3 - 26AWG STANDARD (SMALL BORE)
- C4 - 28AWG STANDARD (SMALL BORE)

No. OF CONTACTS: XX - 04-50
(EVEN ONLY)

SHIELDING: 69 - SHIELDED
70 - SHIELDED & TWISTED

CONNECTOR 2 FIXING STYLE:
F1 - SLOTTED JACKSCREW
F2 - HEX JACKSCREW

DIM 'A' LENGTH:
0060 = 60mm MIN
9999 = 9999mm MAX

CONNECTOR 1 FIXING STYLE:
F1 - SLOTTED JACKSCREW
F2 - HEX JACKSCREW

AB	I	19.12.22	32169
NAME	ISS.	DATE	CN/CO
APPROVED: R.PORTLOCK			
CHECKED: M.RUDKIN			
DRAWN: A.BOXALL			
CUSTOMER REF.:			
ASSEMBLY DRG:			

www.harwin.com
technical@harwin.com

THIS DRAWING AND ANY INFORMATION OR DESCRIPTIVE MATTER SET OUT HEREON ARE CONFIDENTIAL AND COPYRIGHT PROPERTY OF THE HARWIN GROUP AND MUST NOT BE DISCLOSED, LOANED, COPIED OR USED FOR MANUFACTURING, TENDERING OR FOR ANY OTHER PURPOSE WITHOUT THEIR WRITTEN PERMISSION.

TOLERANCES
X. = ±1mm
X.X = ±0.50mm
X.XX = ±0.20mm
X.XXX = ±0.01mm
ANGLES = ±5°
UNLESS STATED

MATERIAL:
SEE SHEET 6
FINISH: -
S/AREA: - mm²

TITLE:
M80 DOUBLE ENDED SHIELDED CABLE ASSEMBLIES
DRAWING NUMBER:
M80-FXXXXXXXXFX-XXXXFX
SHT 7 OF 9

Customer Information Sheet

DRAWING No.: M80-FXXXXXXFX-XXXXFX

IF IN DOUBT - ASK

©

NOT TO SCALE

THIRD ANGLE PROJECTION

ALL DIMENSIONS IN mm

EXAMPLE SHOWN:

T-CONTACT ASSEMBLY TWISTED AND SHIELDED
M80-FB10870F2-0150F2

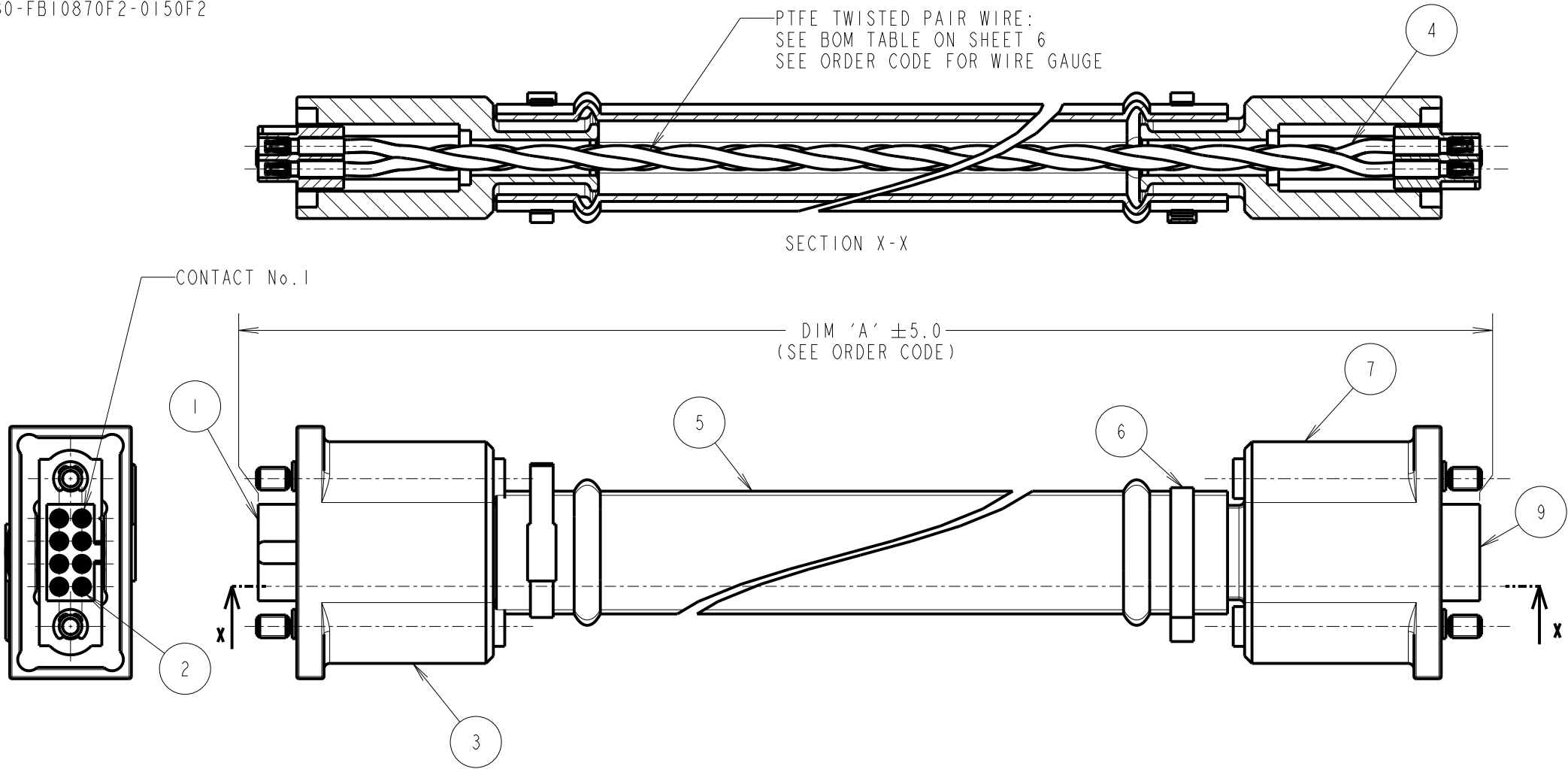
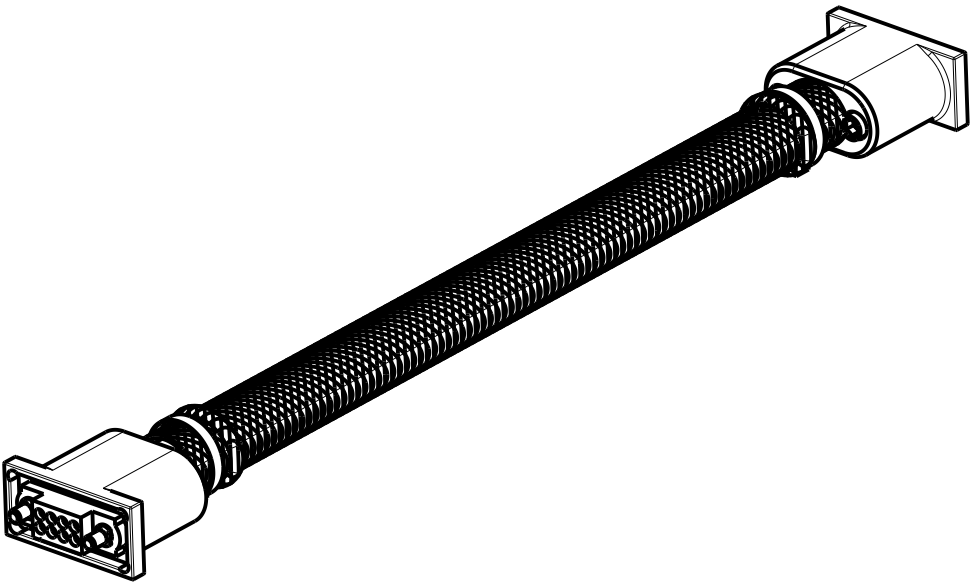
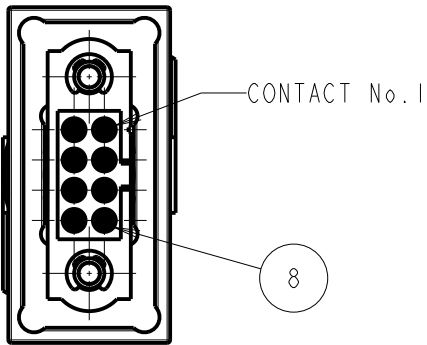


TABLE 2: TWISTED PAIR CABLE CONFIGURATIONS			
WIRING FOR EXAMPLE PART No. M80-FB10870F2-0150F2			
TWISTED PAIR No.	CONNECTOR PIN No.	TURNS PER INCH	WIRE COLOUR
1	1	3	WHITE & GREEN
	5		
2	2	2	WHITE & RED
	6		
3	3	3	WHITE & GREEN
	7		
4	4	2	WHITE & RED
	8		

FOR CONNECTORS WITH MORE THAN 8 CONTACTS, CONTINUE TWIST & CABLE PIN OUT CONVENTION IN THE SAME PATTERN.
(I.E. TWISTED PAIR BETWEEN CONTACT X & CONTACT X)

SEE BILL OF MATERIALS TABLE ON SHEET 1 FOR TWISTED PAIR PART NUMBERS.



ORDER CODE:

M80-FXXXXXXFX-XXXXFX

CONTACT GAUGE AND TYPE:

B1 - 22AWG T-CONTACT (LARGE BORE)
C1 - 22AWG STANDARD (LARGE BORE)
C2 - 24AWG STANDARD (SMALL BORE)
C3 - 26AWG STANDARD (SMALL BORE)
C4 - 28AWG STANDARD (SMALL BORE)

No. OF CONTACTS:

XX - 04-50
(EVEN ONLY)

SHIELDING:

69 - SHIELDED
70 - SHIELDED & TWISTED

CONNECTOR 2 FIXING STYLE:

F1 - SLOTTED JACKSCREW
F2 - HEX JACKSCREW

DIM 'A' LENGTH:

0060 = 60mm MIN
9999 = 9999mm MAX

CONNECTOR 1 FIXING STYLE:

F1 - SLOTTED JACKSCREW
F2 - HEX JACKSCREW

HARWIN

www.harwin.com
technical@harwin.com

THIS DRAWING AND ANY INFORMATION OR DESCRIPTIVE MATTER SET OUT HEREON ARE CONFIDENTIAL AND COPYRIGHT PROPERTY OF THE HARWIN GROUP AND MUST NOT BE DISCLOSED, LOANED, COPIED OR USED FOR MANUFACTURING, TENDERING OR FOR ANY OTHER PURPOSE WITHOUT THEIR WRITTEN PERMISSION.

TOLERANCES

X. = ±1mm
X.X = ±0.50mm
X.XX = ±0.20mm
X.XXX = ±0.01mm

ANGLES = ±5°

UNLESS STATED

MATERIAL:

SEE SHEET 6

FINISH:

-

S/AREA:

-

mm²

TITLE:

M80 DOUBLE ENDED
SHIELDED CABLE ASSEMBLIES

DRAWING NUMBER:

M80-FXXXXXXFX-XXXXFX

SHT

8

OF

9

AB 1 19.12.22 32169

NAME ISS. DATE CN/CO

APPROVED: R.PORTLOCK

CHECKED: M.RUDKIN

DRAWN: A.BOXALL

CUSTOMER REF.:

ASSEMBLY DRG:

Customer Information Sheet

DRAWING No.: M80-FXXXXXXFX-XXXXFX

IF IN DOUBT - ASK

©

NOT TO SCALE

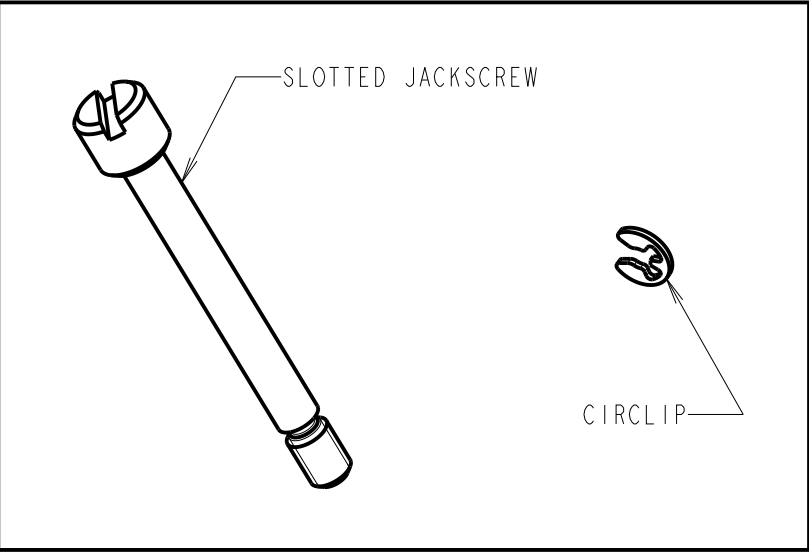
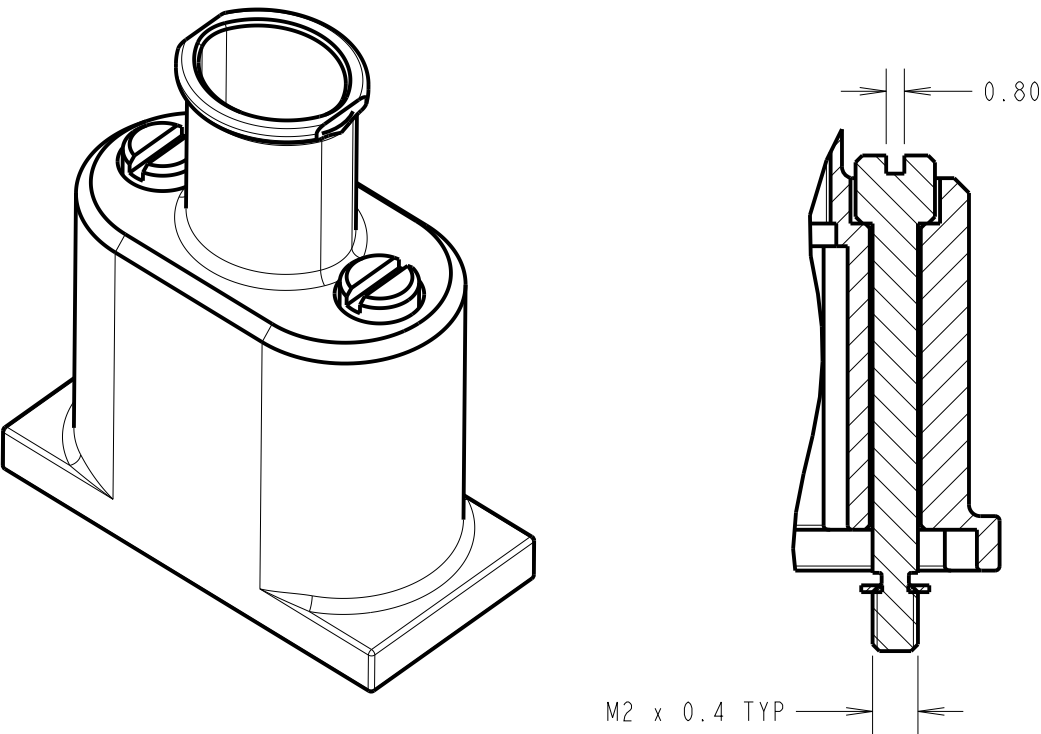
THIRD ANGLE PROJECTION

ALL DIMENSIONS IN mm

FIXING STYLE IDENTIFICATION

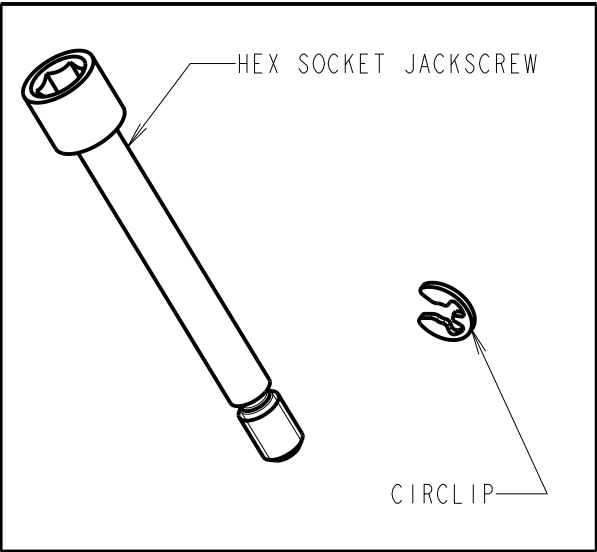
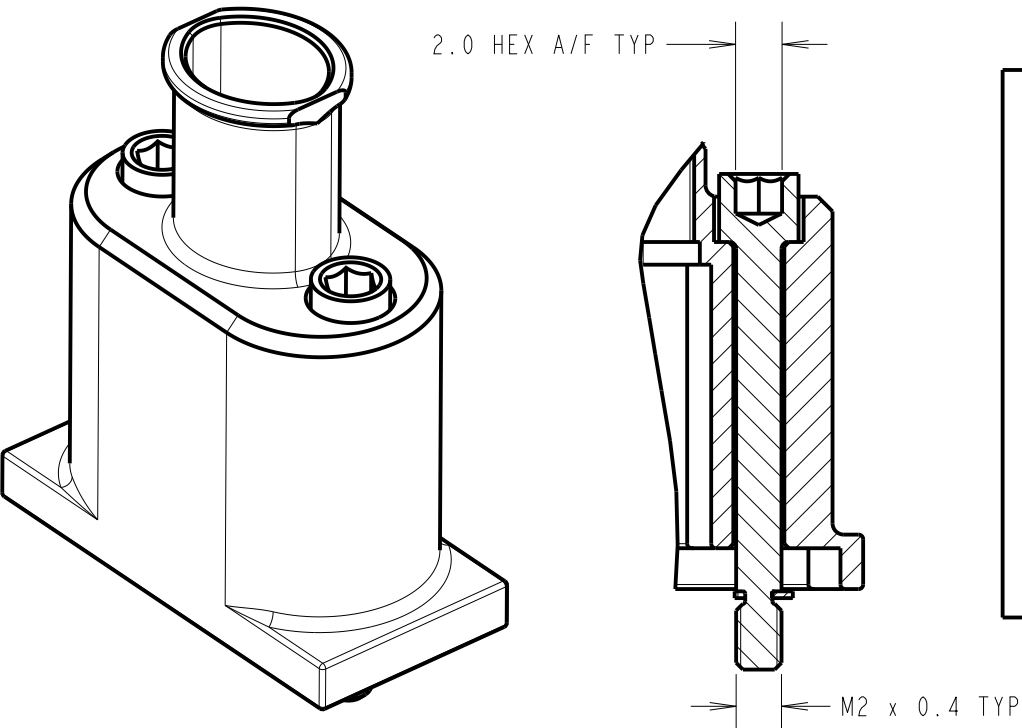
F1

EXAMPLE SHOWN: M80-9450802



F2

EXAMPLE SHOWN: M80-9460802



ORDER CODE:

M80-FXXXXXXFX-XXXXFX

CONTACT GAUGE AND TYPE:

- B1 - 22AWG T-CONTACT (LARGE BORE)
- C1 - 22AWG STANDARD (LARGE BORE)
- C2 - 24AWG STANDARD (SMALL BORE)
- C3 - 26AWG STANDARD (SMALL BORE)
- C4 - 28AWG STANDARD (SMALL BORE)

No. OF CONTACTS: XX - 04-50 (EVEN ONLY)

SHIELDING: 69 - SHIELDED
70 - SHIELDED & TWISTED

CONNECTOR 2 FIXING STYLE:
F1 - SLOTTED JACKSCREW
F2 - HEX JACKSCREW

DIM 'A' LENGTH:
0060 = 60mm MIN
9999 = 9999mm MAX

CONNECTOR 1 FIXING STYLE:
F1 - SLOTTED JACKSCREW
F2 - HEX JACKSCREW

AB	I	19.12.22	32169
NAME	ISS.	DATE	CN/CO

APPROVED: R.PORTLOCK

CHECKED: M.RUDKIN

DRAWN: A.BOXALL

CUSTOMER REF.:

ASSEMBLY DRG:

NOTES:
8. SEE BILL OF MATERIALS ON SHEET 6 AND ORDER CODE FOR FIXING IDENTIFICATION.

HARWIN

www.harwin.com
technical@harwin.com

THIS DRAWING AND ANY INFORMATION OR DESCRIPTIVE MATTER SET OUT HEREON ARE CONFIDENTIAL AND COPYRIGHT PROPERTY OF THE HARWIN GROUP AND MUST NOT BE DISCLOSED, LOANED, COPIED OR USED FOR MANUFACTURING, TENDERING OR FOR ANY OTHER PURPOSE WITHOUT THEIR WRITTEN PERMISSION.

TOLERANCES
X. = $\pm 1\text{mm}$
X.X = $\pm 0.50\text{mm}$
X.XX = $\pm 0.20\text{mm}$
X.XXX = $\pm 0.01\text{mm}$
ANGLES = $\pm 5^\circ$
UNLESS STATED

MATERIAL:

SEE SHEET 6

FINISH:

-

S/AREA:

-

mm²

TITLE:

M80 DOUBLE ENDED
SHIELDED CABLE ASSEMBLIES

DRAWING NUMBER:

M80-FXXXXXXFX-XXXXFX

SHT

9 OF 9