

Customer Information Sheet

IF IN DOUBT - ASK

©

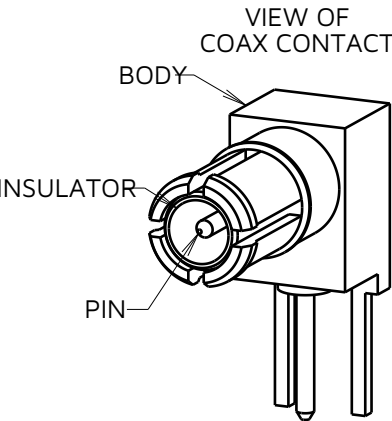
NOT TO SCALE

THIRD ANGLE PROJECTION

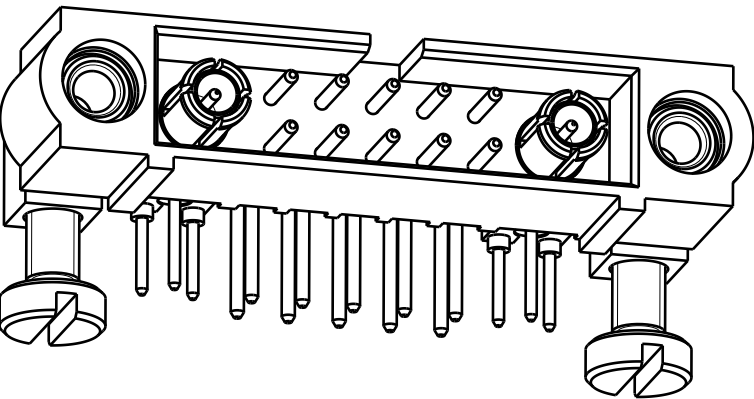
ALL DIMENSIONS IN mm

SPECIFICATIONS:

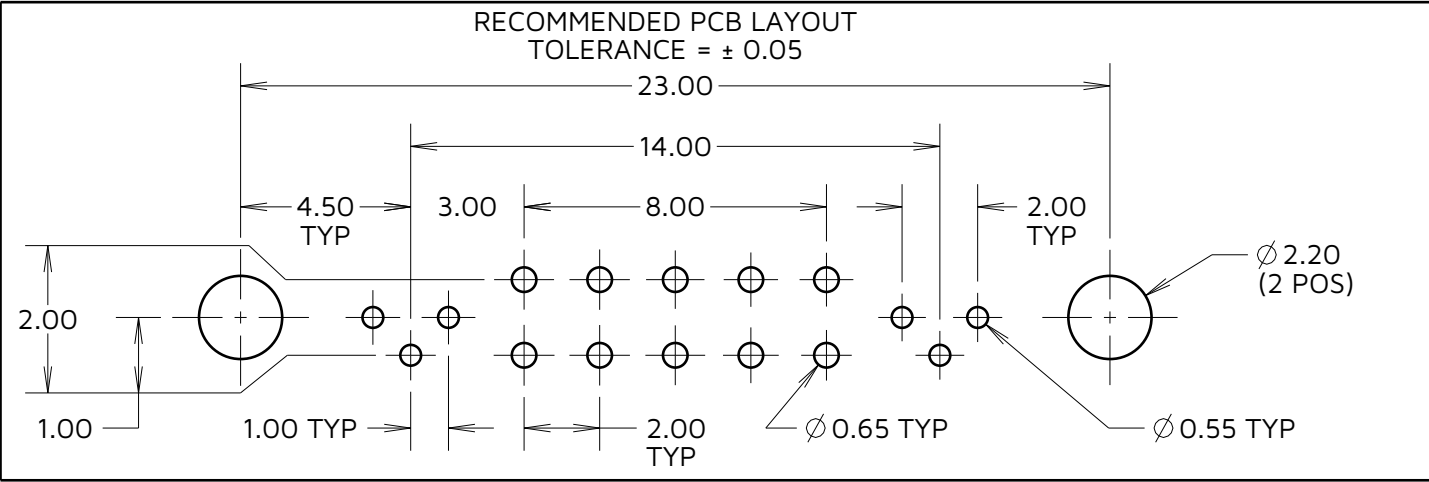
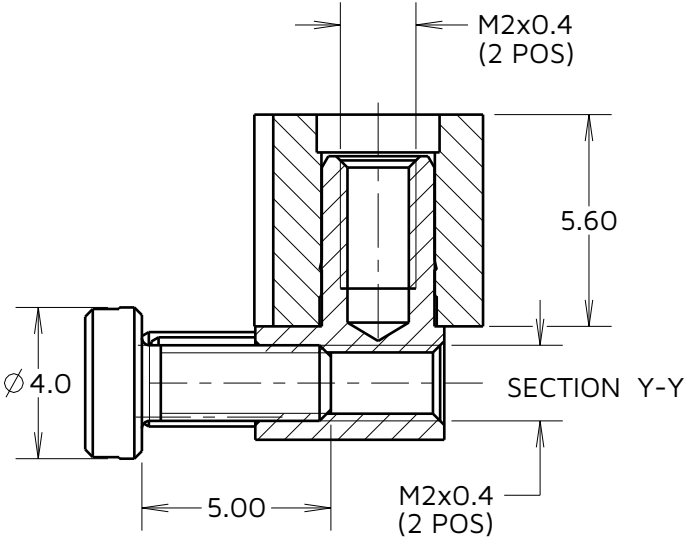
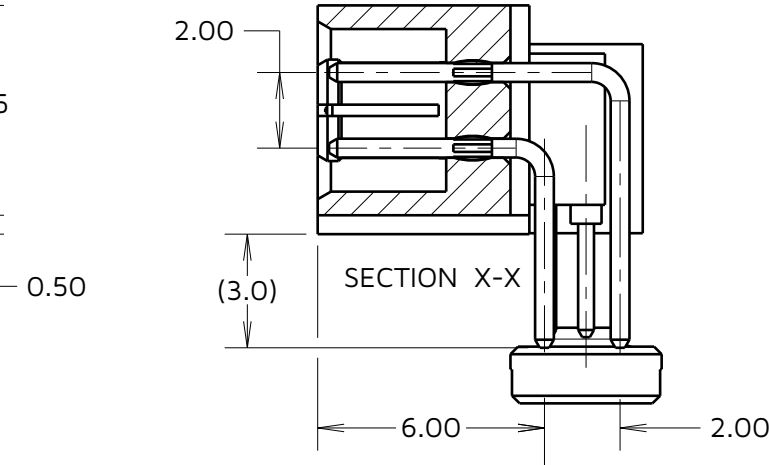
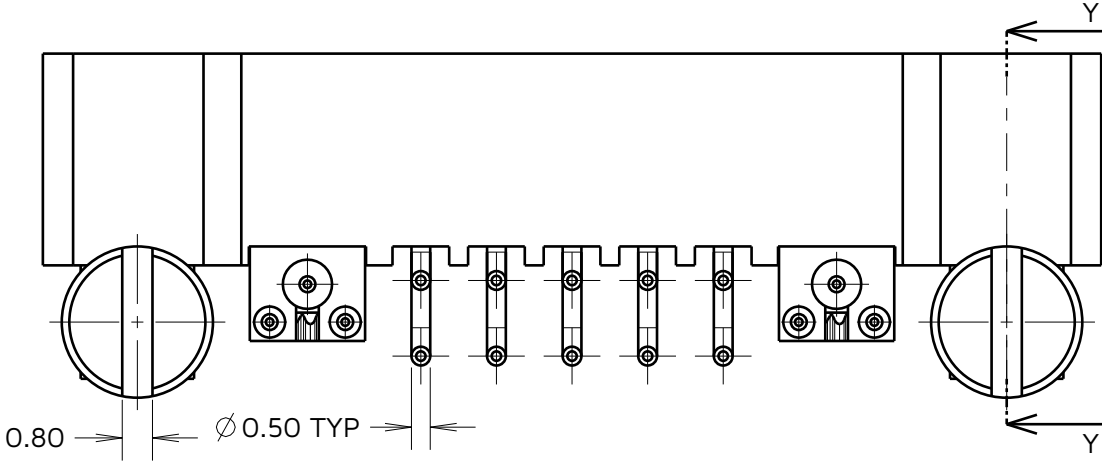
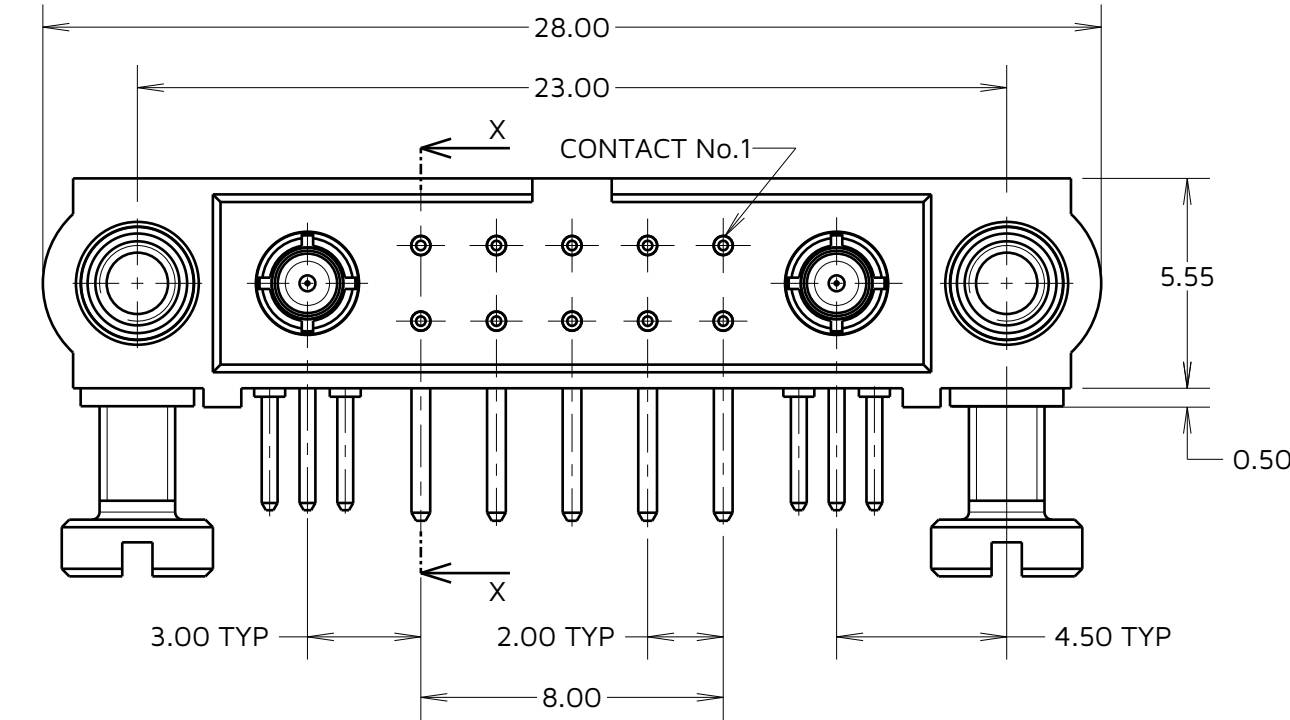
MATERIAL:
HOUSING = GLASS FILLED PPS, UL94V-0, BLACK
SIGNAL CONTACT = PHOSPHOR BRONZE
COAX CONTACT:
BODY = COPPER ALLOY
INNER CONTACT = PHOSPHOR BRONZE
INSULATOR = PTFE
BOARD-MOUNT JACKSCREW, SCREW: STAINLESS STEEL
FINISH:
SIGNAL CONTACT:
GOLD ON CONTACT AREA,
100% TIN OVER NICKEL ON TAILS
COAX CONTACT:
BODY, INNER CONTACT = GOLD OVER NICKEL
PACKING:
TUBE
FOR COMPLETE SPECIFICATION SEE COMPONENT
SPECIFICATION C005XX (LATEST ISSUE)



COMPLETE ASSEMBLY
FOR ILLUSTRATION ONLY



NOTES:
1. SCREWS ARE SUPPLIED LOOSE IN A BAG, NOT ASSEMBLED AS SHOWN



HARWIN

www.harwin.com

TOLERANCES
X. = ±1mm
X.X = ±0.50mm
X.XX = ±0.20mm
X.XXX = ±0.01mm
ANGLES = ±5°
UNLESS STATED

THIS DRAWING AND ANY
INFORMATION OR DESCRIPTIVE
MATTER SET OUT HEREON ARE
CONFIDENTIAL AND COPYRIGHT
PROPERTY OF THE HARWIN GROUP
AND MUST NOT BE DISCLOSED,
LOANED, COPIED OR USED FOR
MANUFACTURING, TENDERING OR FOR
ANY OTHER PURPOSE WITHOUT THEIR
WRITTEN PERMISSION.

MATERIAL & FINISH:

SEE ABOVE

TITLE: JACKSCREW DATAMATE
MIXED TECHNOLOGY VERTICAL
PC TAIL MALE ASSEMBLY

DRAWING NUMBER:
M80-5L11042M5-01-313-01-313

SHT
2
OF
2

MJ	2	08.11.24	34803
NAME	ISS.	DATE	CN/CO
APPROVED:		M. JELLEY	
CHECKED:		R. ALEXANDER	
DRAWN:		M.PERREN	