



05 August 2025

Dear Customer,

**Re: Product Change notification for Harwin product.**

There has been a change to the design of the following product:

- M701-370442

Please see the latest Technical Drawing:

<https://content.harwin.com/m/ddb986efe78fb4ae/original/DRG-00719-Technical-Drawing-Datasheet-M701-370442-pdf.pdf>

As the tooling for this item reached the end of its life, the opportunity was taken to review and revise the product. Generally, dimensions are either the same or have only changed by a small amount, and we are reasonably confident that the new design will replace the old design without any changes required. However, we do recommend that you check and confirm if any of the changes will affect your specific construction/application.

All new orders shipped from Harwin will be to the new design. Stock of the old design will still be present at our distribution partners, until it is sold and replaced.

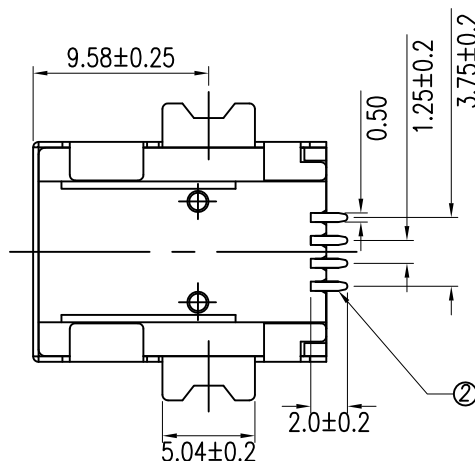
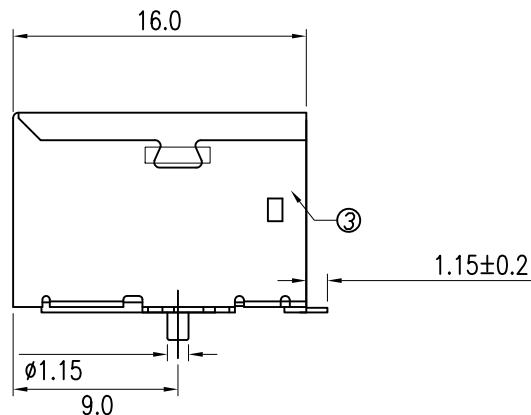
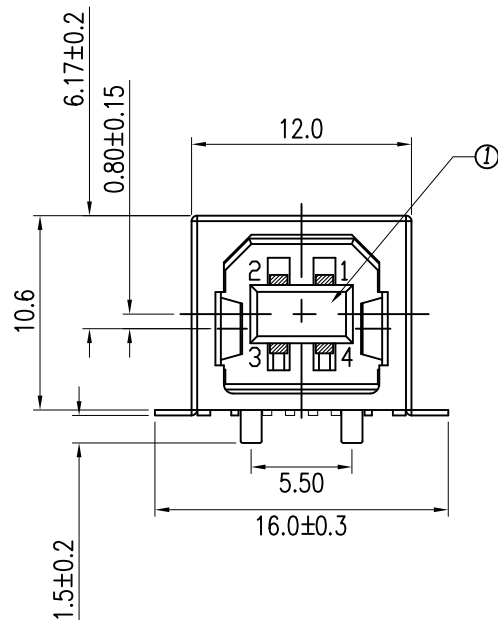
The previous Technical Drawing for the old design is attached to this notification, for comparison purposes.

If you have any further questions regarding this letter, please do not hesitate to contact us.

Yours faithfully,

The Product Change Team  
[support@harwin.com](mailto:support@harwin.com)

# Superseded by Issue 4



## SPECIFICATIONS:

## MATERIAL:-

①HOUSING: NYLON PA9T G.F. (UL 94V-0), WHITE, QTY: 1

②PIN TERMINAL: PHOSPHOR BRONZE,  
T=0.25mm, QTY: 4

③SHELL: BRASS, T=0.3mm, QTY: 1

## FINISH:-

②PIN TERMINAL: GOLD/TIN PLATED OVER NICKEL

③SHELL: Ni PLATED

## Technical Specification: -

Contact Resistance: 30m Ohm Max.

Insulation Resistance: 1000M Ohm Min. At 500VDC.

Rated Voltage And Current: 1.5A At 250VAC Minimum.

Dielectric Withstanding Voltage: 750V AC (rms) for 1 Minute(Rev. 1.1)

Durability (Life Test): 1500 Cycles

Insertion Force: 35 Newton Maximum.

Extraction Force: 10 Newton Minimum.

Soldering Temp.: 260±5°C.

Operating temperature: -55°C to 85°C

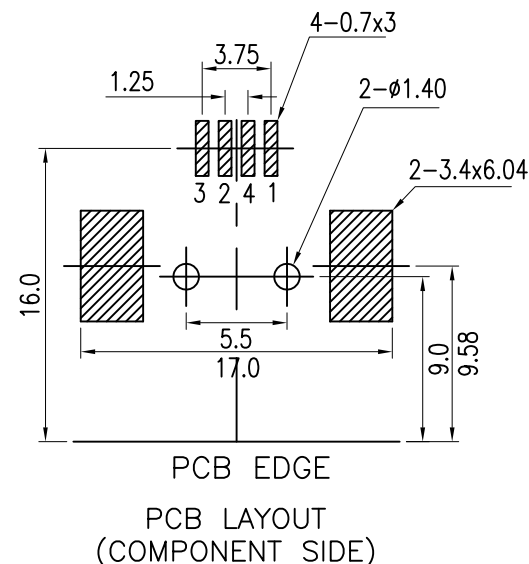
USB 2.0 compatible

NOTES: ALL DIMENSIONS AND NOTES  
MARKED \* ARE CRITICAL AND  
MUST BE CHECKED IN ACCORDANCE  
WITH QUALITY DOC. QI-02A

## TOLERANCES

X.X = ±0.25mm

X.XX = ±0.20mm



Leo	3	18.07.16	A496
Leo	2	03.03.14	A423
Allan	1	01.08.06	--

NAME	ISS.	DATE	C/NOTE
------	------	------	--------

APPROVED: B.Lim

CHECKED: D.P

DRAWN: Leo

CUSTOMER REF.:

ASSEMBLY DRG:

## HARWIN

HARWIN USA  
TEL: 603 893 5376  
FAX: 603 893 5396  
mis@harwin.com

HARWIN Europe (UK)  
TEL: 023 9231 4545  
FAX: 023 9231 4590  
mis@harwin.co.uk

HARWIN Asia  
TEL: +65 6 779 4909  
FAX: +65 6 779 3868  
mis@harwin.com.sg

THIS DRAWING AND ANY  
INFORMATION OR DESCRIPTIVE  
MATTER SET OUT HEREON ARE  
CONFIDENTIAL AND COPYRIGHT  
PROPERTY OF THE HARWIN  
GROUP AND MUST NOT BE  
DISCLOSED, LOANED, COPIED  
OR USED FOR MANUFACTURING,  
TENDERING OR FOR ANY  
OTHER PURPOSE WITHOUT  
THEIR WRITTEN PERMISSION.

## TOLERANCES

X. = ±1mm  
X.X = ±0.25mm  
X.XX = ±0.10mm  
X.XXX = ±0.01mm

ANGLES = ±5°

UNLESS STATED

## MATERIAL:

SEE NOTES

## FINISH:

SEE NOTES

## S/AREA:

mm?

## TITLE:

USB B TYPE FEMALE SMT

## DRAWING NUMBER:

M701-370442

SHT  
1  
OF  
1