

# Customer Information Sheet

IF IN DOUBT - ASK

©

NOT TO SCALE

THIRD ANGLE PROJECTION

ALL DIMENSIONS IN mm

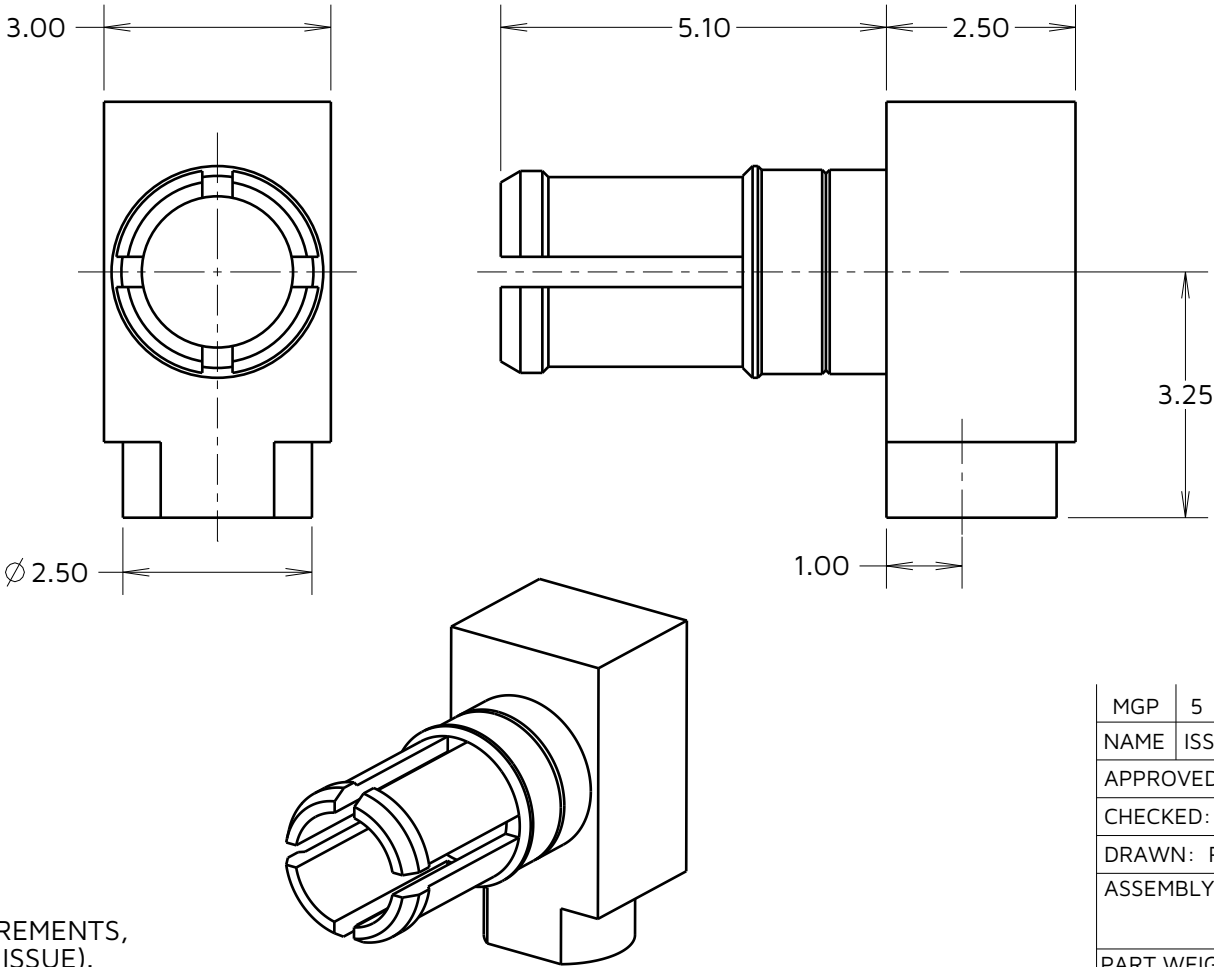
SPECIFICATIONS:

MATERIALS:

BODY = COPPER ALLOY

FINISH:

BODY = GOLD



NOTES:

1. RECOMMENDED PCB PAD SIZE =  $\varnothing 2.75 \pm 0.05 \text{mm}$ .
2. FOR ALL OTHER ELECTRICAL/ MECHANICAL REQUIREMENTS, SEE COMPONENT SPECIFICATION CO05XX (LATEST ISSUE).

MGP 5 27.07.23 32802

NAME ISS. DATE CN/CO

APPROVED: MGP

CHECKED: RTP

DRAWN: R.ADDE

ASSEMBLY DRG:

PART WEIGHT: MAT'L USAGE:

HARWIN

www.harwin.com

TOLERANCES

X. =  $\pm 1 \text{mm}$   
X.X =  $\pm 0.50 \text{mm}$   
X.XX =  $\pm 0.20 \text{mm}$   
X.XXX =  $\pm 0.01 \text{mm}$

ANGLES =  $\pm 5^\circ$

UNLESS STATED

THIS DRAWING AND ANY INFORMATION OR DESCRIPTIVE MATTER SET OUT HEREON ARE CONFIDENTIAL AND COPYRIGHT PROPERTY OF THE HARWIN GROUP AND MUST NOT BE DISCLOSED, LOANED, COPIED OR USED FOR MANUFACTURING, TENDERING OR FOR ANY OTHER PURPOSE WITHOUT THEIR WRITTEN PERMISSION.

MATERIAL:

SEE ABOVE

FINISH: SEE ABOVE

S/AREA: mm<sup>2</sup>

TITLE: DATAMATE MIX-TEK  
MALE POWER CONTACT  
HORIZONTAL SMT

DRAWING NUMBER:

M80-33A

SHT  
2  
OF  
2