

Customer Information Sheet

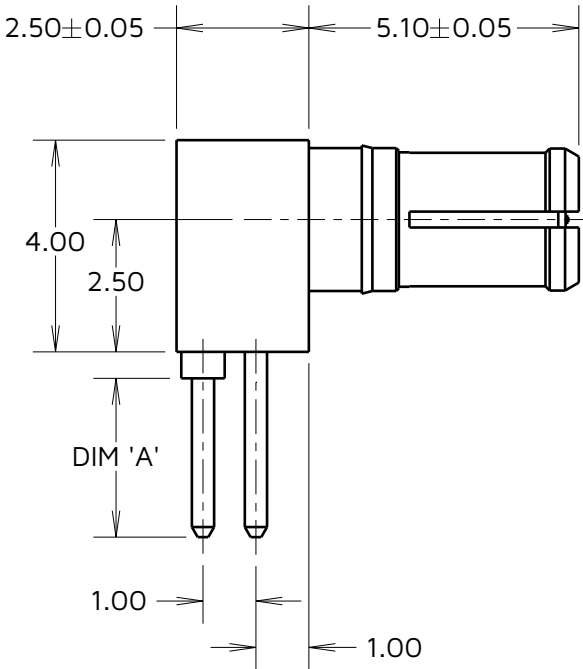
IF IN DOUBT - ASK

©

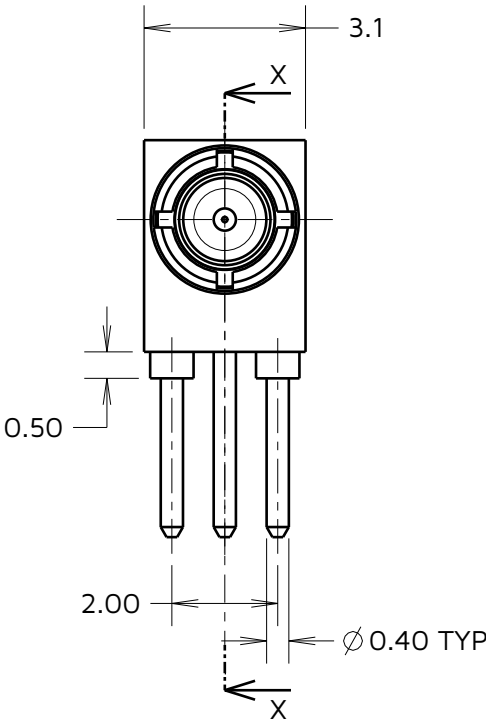
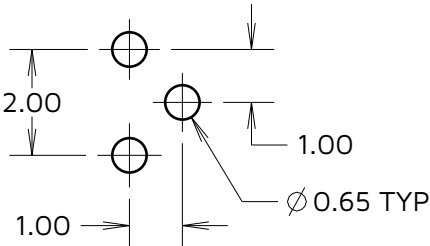
NOT TO SCALE

THIRD ANGLE PROJECTION

ALL DIMENSIONS IN mm

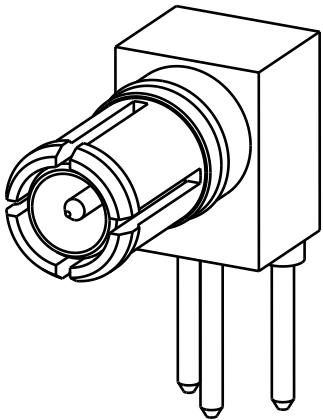
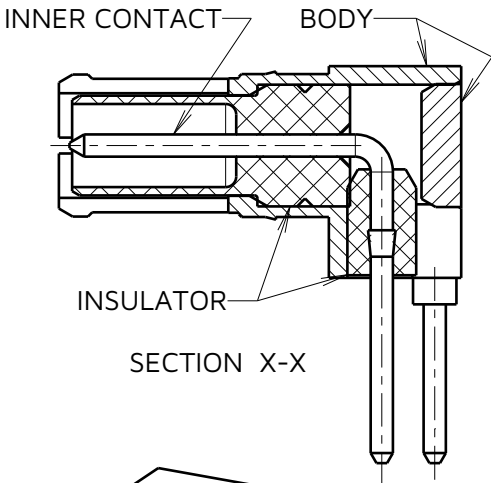


RECOMMENDED PCB LAYOUT
TOLERANCE = ±0.05mm



PART No.	DIM 'A'
M80-313	3.00
M80-314	4.50

- NOTES:
- CONTACTS SUPPLIED ASSEMBLED.
 - FOR FULL COMPONENT SPECIFICATION SEE C005XX (LATEST ISSUE).



MGP	17	25.04.23	32483
NAME	ISS.	DATE	CN/CO
APPROVED: MGP			
CHECKED: MR			
DRAWN: W. J. BOURNE			
ASSEMBLY DRG:			
PART WEIGHT:		MAT'L USAGE:	

HARWIN

www.harwin.com

TOLERANCES
X. = ±1mm
X.X = ±0.50mm
X.XX = ±0.20mm
X.XXX = ±0.01mm
ANGLES = ±5°
UNLESS STATED

THIS DRAWING AND ANY INFORMATION OR DESCRIPTIVE MATTER SET OUT HEREON ARE CONFIDENTIAL AND COPYRIGHT PROPERTY OF THE HARWIN GROUP AND MUST NOT BE DISCLOSED, LOANED, COPIED OR USED FOR MANUFACTURING, TENDERING OR FOR ANY OTHER PURPOSE WITHOUT THEIR WRITTEN PERMISSION.

MATERIAL:
COPPER ALLOY WITH
PTFE INSULATOR

FINISH: GOLD

S/AREA: mm²

TITLE: DATAMATE MIX-TEK
COAX CONTACT
MALE HORIZONTAL PC-TAIL

DRAWING NUMBER:
M80-313 TO M80-314

SHT
2
OF
2