

Customer Information Sheet

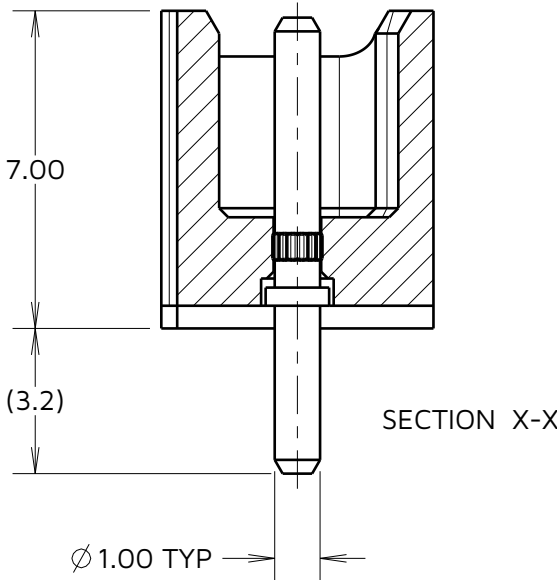
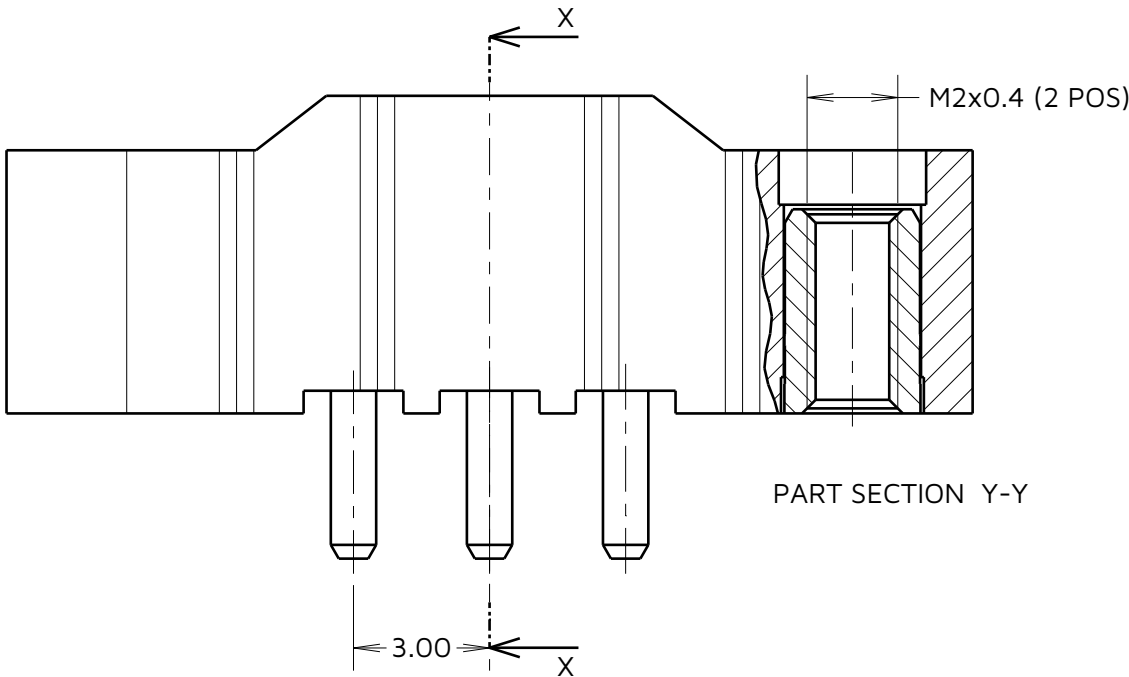
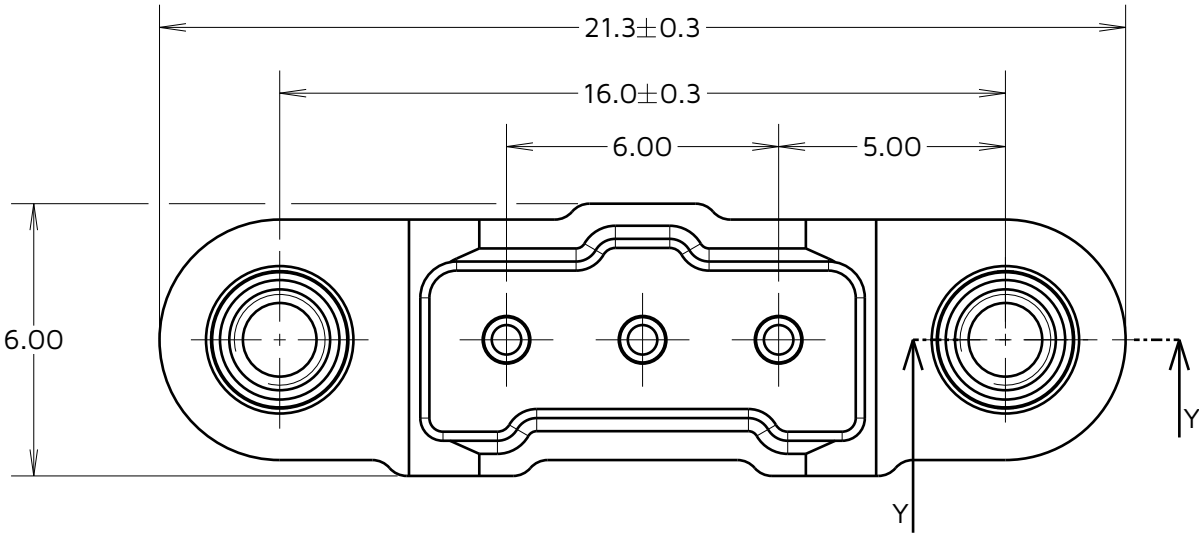
IF IN DOUBT - ASK

©

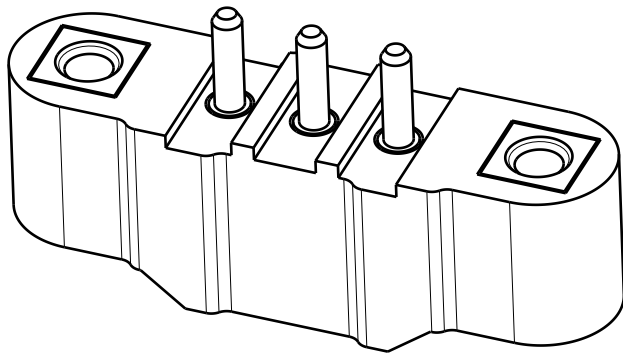
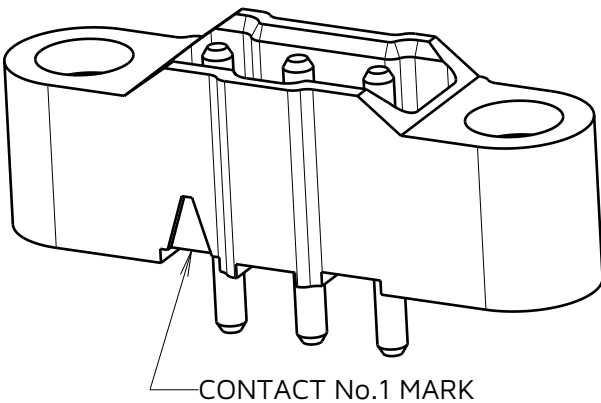
NOT TO SCALE

THIRD ANGLE PROJECTION

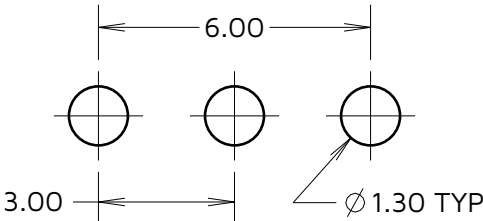
ALL DIMENSIONS IN mm



SPECIFICATONS:
MATERIAL:
HOUSING = GLASS-FILLED PA46 UL94V-0, GREEN
CONTACTS = BRASS
JACKSCREW NUT = STAINLESS STEEL
FINISH:
GOLD
PACKING:
TUBE
FOR COMPLETE SPECIFICATION, SEE COMPONENT SPECIFICIATION C048XX (LATEST ISSUE)



RECOMMENDED PCB LAYOUT
(ALL TOLERANCES $\pm 0.05\text{mm}$)



HARWIN

www.harwin.com

TOLERANCES
X. = $\pm 1\text{mm}$
X.X = $\pm 0.50\text{mm}$
X.XX = $\pm 0.20\text{mm}$
X.XXX = $\pm 0.01\text{mm}$
ANGLES = $\pm 5^\circ$
UNLESS STATED

THIS DRAWING AND ANY INFORMATION OR DESCRIPTIVE MATTER SET OUT HEREON ARE CONFIDENTIAL AND COPYRIGHT PROPERTY OF THE HARWIN GROUP AND MUST NOT BE DISCLOSED, LOANED, COPIED OR USED FOR MANUFACTURING, TENDERING OR FOR ANY OTHER PURPOSE WITHOUT THEIR WRITTEN PERMISSION.

MATERIAL & FINISH:

SEE ABOVE

TITLE: 1mm POWER CONNECTOR
SIL VERTICAL PC TAIL
MALE ASSEMBLY

DRAWING NUMBER:
M300-MV10345M1

SHT
2 OF
2

RTP	4	05.12.24	35312
NAME	ISS.	DATE	CN/CO
APPROVED: R.PORTLOCK			
CHECKED: A.BOXALL			
DRAWN: MARK G PLESTED			