

# Customer Information Sheet

DRAWING No.: M80-4DI0605FC-02-327-00-000

IF IN DOUBT - ASK

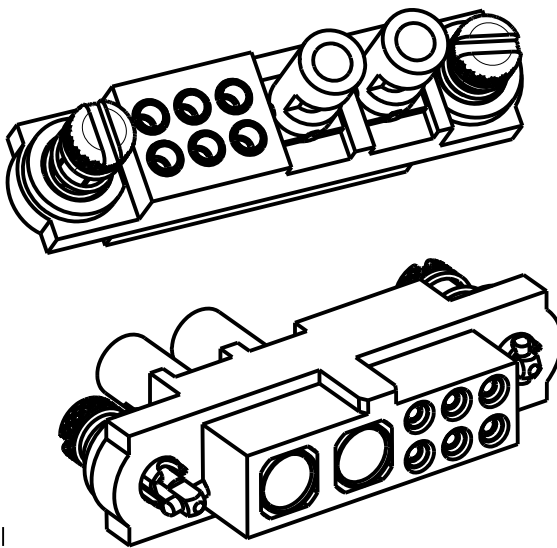
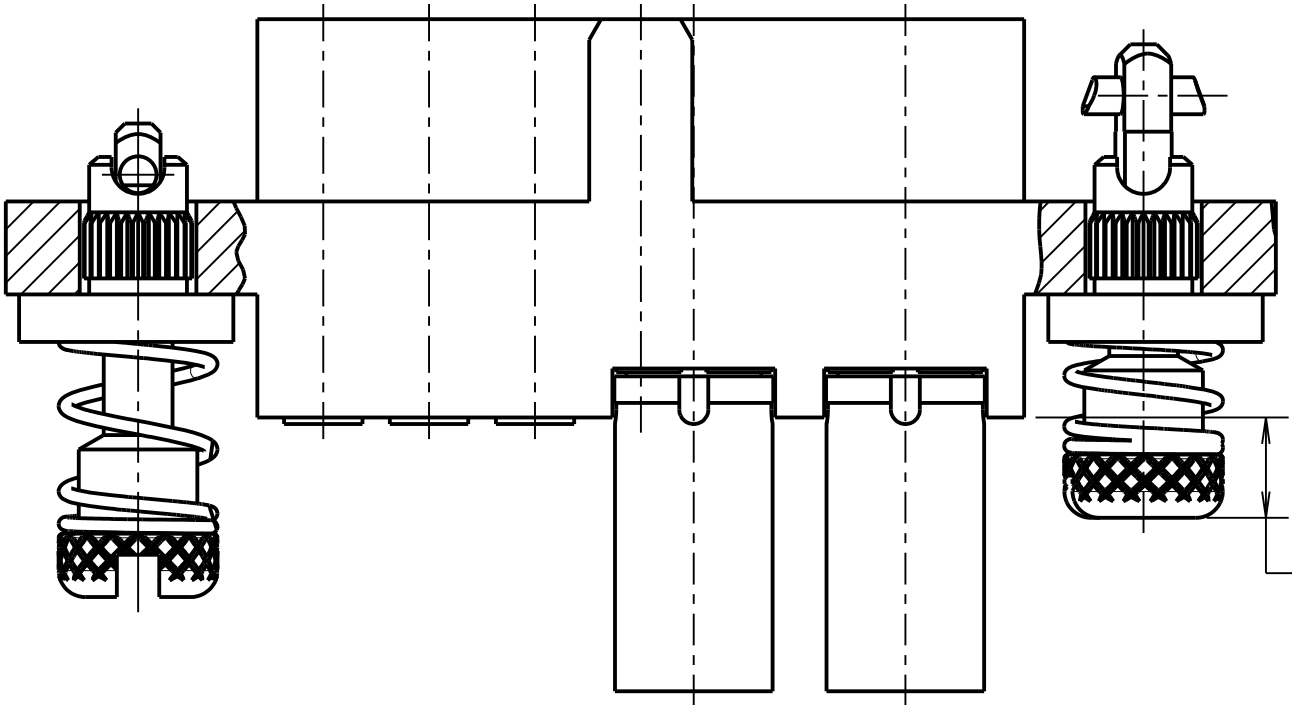
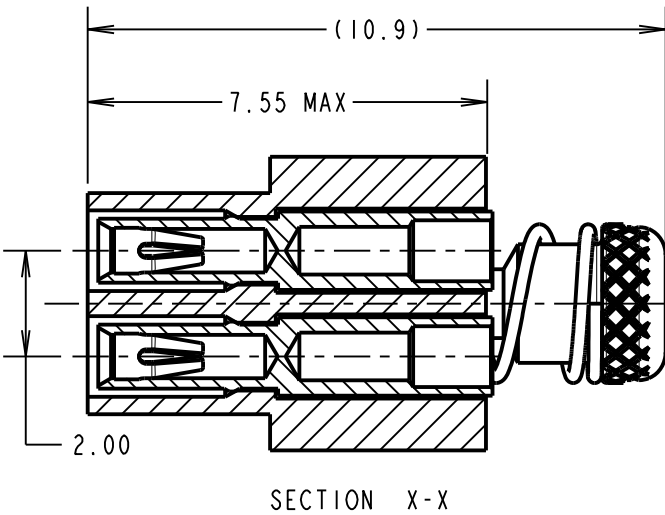
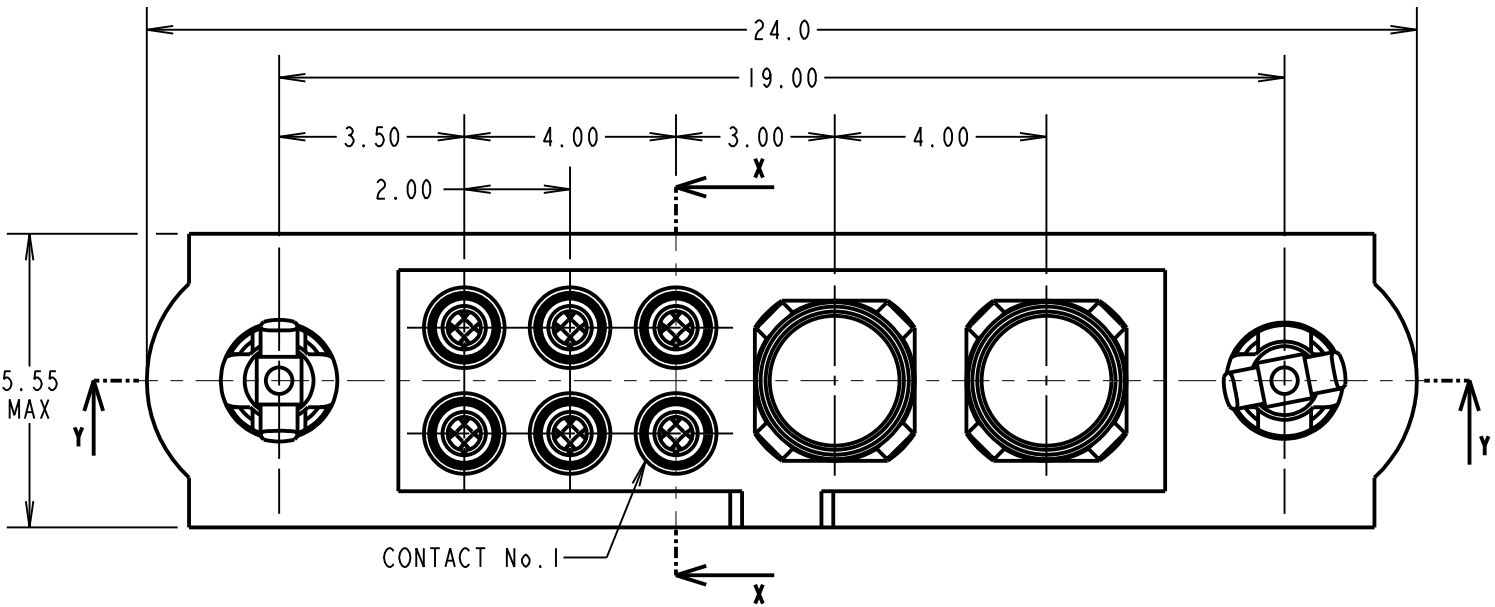
©

NOT TO SCALE

THIRD ANGLE PROJECTION

ALL DIMENSIONS IN mm

**SPECIFICATIONS:**  
**MATERIAL:**  
MOULDING: GLASS FILLED PPS, UL94V-0, BLACK  
SIGNAL CONTACT:  
CLIP = BERYLLIUM COPPER  
SHELL = BRASS  
POWER CONTACT:  
BODY = COPPER ALLOY  
LATCHING COLLAR = BERYLLIUM COPPER  
**HARDWARE:**  
10ILOK SCREW, COLLAR = STAINLESS STEEL  
SPRING = MUSIC WIRE  
**FINISH:**  
SIGNAL CONTACT:  
CLIP = 0.3µm GOLD  
SHELL = 0.25-0.3µm GOLD  
POWER CONTACT:  
BODY = GOLD  
LATCHING COLLAR = NICKEL  
SPRINGS = TIN COATED  
**ELECTRICAL:**  
WORKING VOLTAGE = 800V AC/DC  
VOLTAGE PROOF = 1200V AC/DC  
INSULATION RESISTANCE = 100MΩ MIN  
SIGNAL CONTACT:  
CURRENT RATING AT 25°C = 3.3A MAX  
CURRENT RATING AT 85°C = 2.6A MAX  
CONTACT RESISTANCE = 25mΩ MAX  
POWER CONTACT:  
CONTACT RESISTANCE = 6mΩ MAX  
CURRENT RATING = 10A MAX WITH 16AWG  
CONTACT AS SPECIFIED  
**MECHANICAL:**  
DURABILITY = 500 OPERATIONS  
SIGNAL CONTACT:  
INSERTION FORCE = 2.0N MAX  
WITHDRAWAL FORCE = 0.2N MIN  
POWER CONTACT:  
INSERTION FORCE = 8.0N MAX  
WITHDRAWAL FORCE = 0.5N MIN  
**ENVIRONMENTAL:**  
TEMPERATURE RANGE = -55°C TO +125°C  
**PACKING:**  
BAG  
FOR COMPLETE SPECIFICATION SEE COMPONENT  
SPECIFICATION C005XX (LATEST ISSUE)



1.90  
SEE NOTE 11

- NOTES:**
- CONNECTOR IS SUPPLIED WITH CONTACTS LOOSE.
  - FOR EXTRA CONTACTS, USE PART No's.  
M80-0110005 FOR M80-4D1XX05F1-00-000-00-000
  - RECOMMENDED WIRE TYPE = BS 3G 210 TYPE A,  
PTFE INSULATED 22 AWG. MAX INSULATION  
DIAMETER = Ø1.10mm, STRIP WIRE BY 2.00mm.
  - RECOMMENDED HAND CRIMP TOOL = M22520/2-01  
WITH POSITIONER T5747.
  - CONTACT INSERTION & EXTRACTION TOOL = Z80-280
  - FOR EXTRA POWER CONTACTS, USE PART NUMBER M80-327
  - POWER CONTACT WIRE, STRIP BY 5.00mm MINIMUM
  - POWER CONTACT EXTRACTION TOOL = Z80-290
  - INSTRUCTION SHEETS ARE AVAILABLE.
  - SPRING LOAD WHEN SOLID = 2.64N.  
SPRING RATE = 1.32N/mm
  - LENGTH WILL BE 1.90mm WHEN 10ILOK JACKSCREWS  
ARE ENGAGED WITH RETAINERS IN MATING CONNECTOR.

**HARWIN**

www.harwin.com  
technical@harwin.com

THIS DRAWING AND ANY  
INFORMATION OR DESCRIPTIVE  
MATTER SET OUT HEREON ARE  
CONFIDENTIAL AND COPYRIGHT  
PROPERTY OF THE HARWIN  
GROUP AND MUST NOT BE  
DISCLOSED, LOANED, COPIED  
OR USED FOR MANUFACTURING,  
TENDERING OR FOR ANY  
OTHER PURPOSE WITHOUT  
THEIR WRITTEN PERMISSION.

**TOLERANCES**

X. = ±1mm  
X.X = ±0.50mm  
X.XX = ±0.20mm  
X.XXX = ±0.01mm

ANGLES = ±5°  
UNLESS STATED

**MATERIAL:**

SEE ABOVE

**FINISH:** SEE ABOVE

**S/AREA:** mm<sup>2</sup>

**TITLE:** DATAMATE MIX-TEK  
FEMALE CRIMP ASSY (LARGE BORE)  
WITH 10ILOK JACKSCREWS

**DRAWING NUMBER:**  
M80-4DI0605FC-02-327-00-000

SHT  
2 OF 2

RTP	3	16.05.19	21531
NAME	ISS.	DATE	C/NOTE
APPROVED: R.PORTLOCK			
CHECKED: M.RUDKIN			
DRAWN: S.FLOWER			
CUSTOMER REF.:			
ASSEMBLY DRG:			