

# Customer Information Sheet

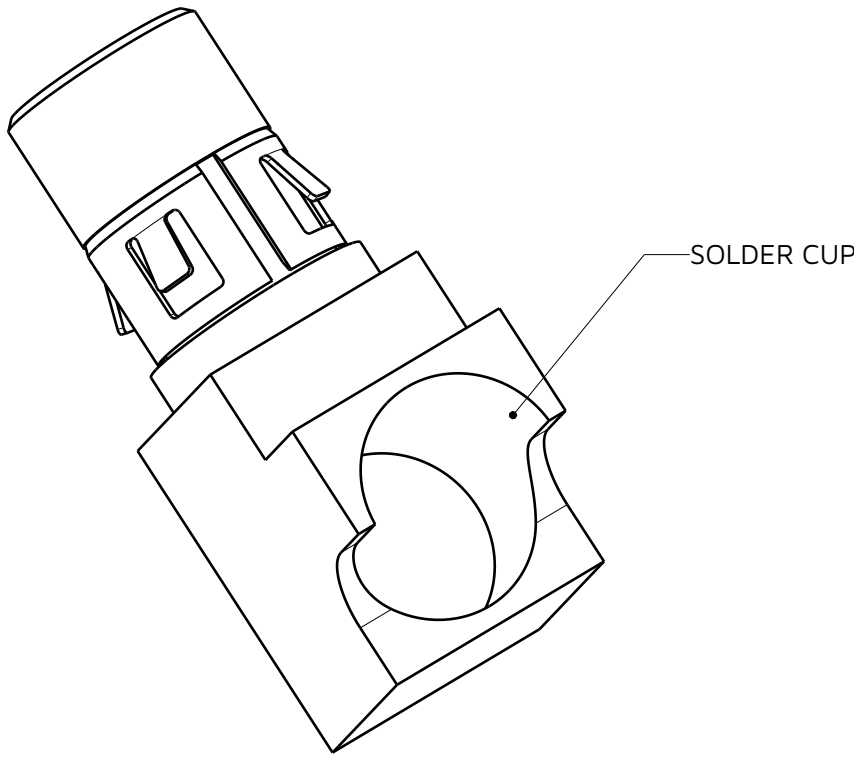
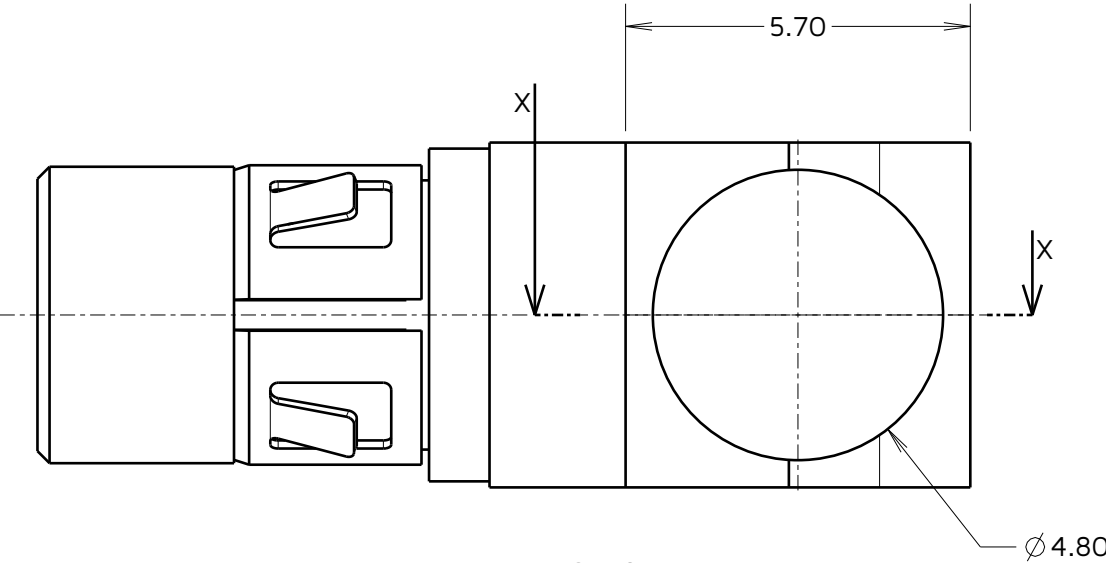
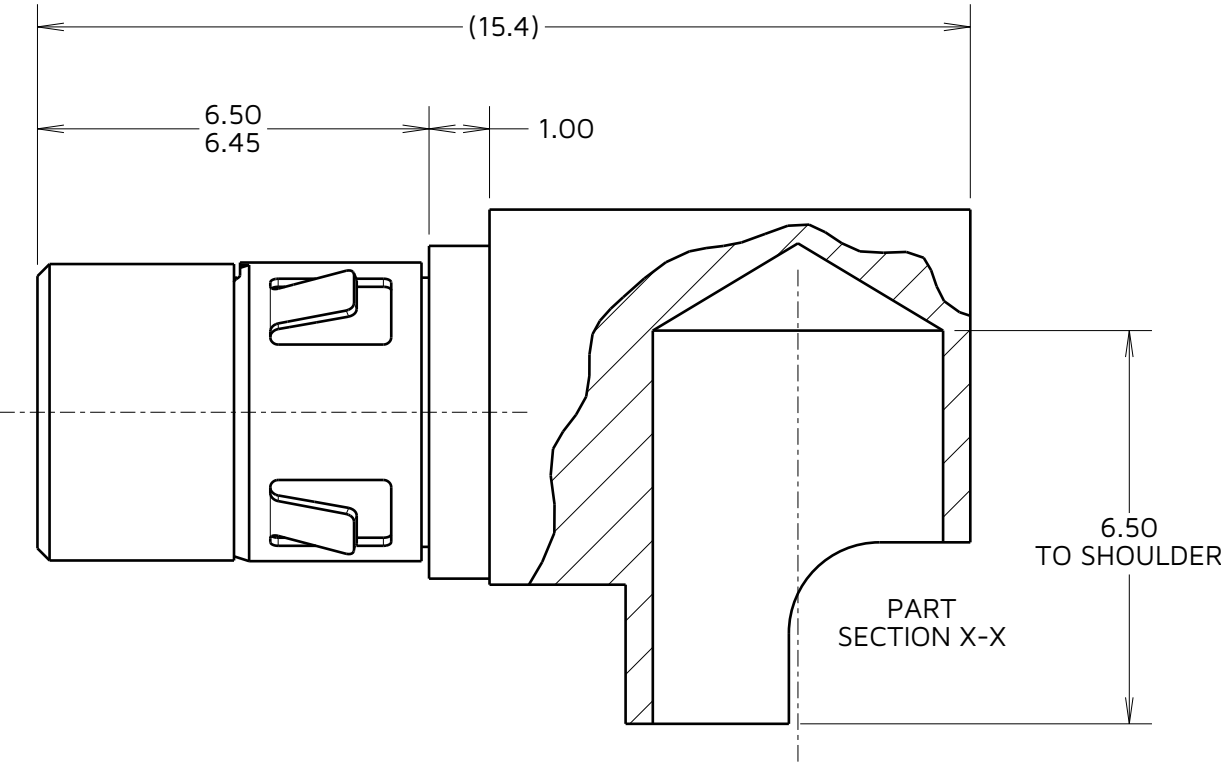
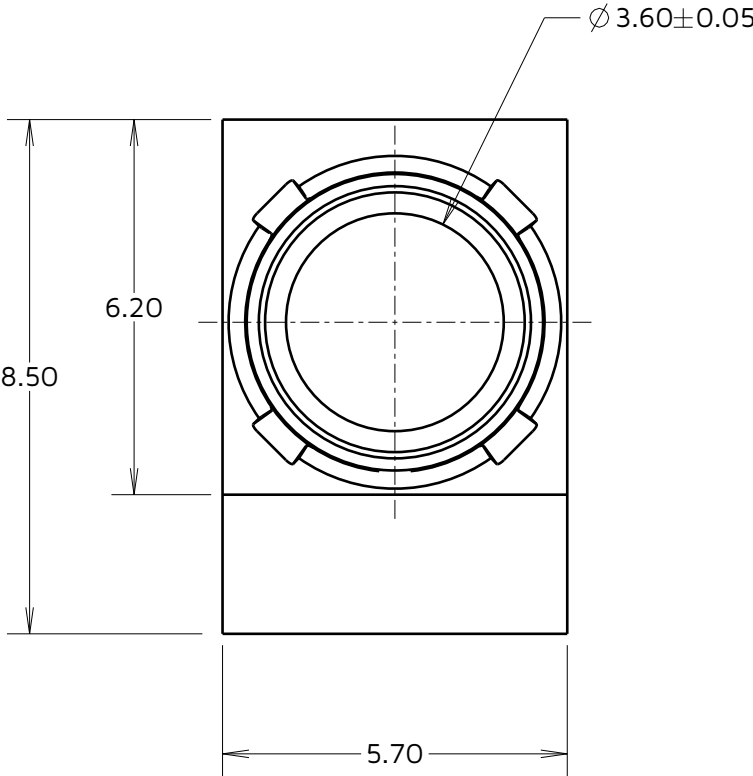
IF IN DOUBT - ASK

©

NOT TO SCALE

THIRD ANGLE PROJECTION

ALL DIMENSIONS IN mm



- NOTES:
1. STRIP WIRE BY 7.0mm.
  2. CONTACT EXTRACTION TOOL = ZA1-9040000. FOR MORE INFORMATION SEE IS-49.
  3. FOR ALL OTHER ELECTRICAL / MECHANICAL REQUIREMENTS, SEE COMPONENT SPECIFICATION C052XX (LATEST ISSUE).
  4. MAX WIRE CONDUCTOR SIZE =  $\varnothing 4.24\text{mm}$  / 8AWG.  
MAX WIRE INSULATION DIAMETER = 7.50mm.
  5. PACK SIZE = 10.

AY	1	13/11/23	33327
NAME	ISS.	DATE	CN/CO
APPROVED: A.YEOMANS			
CHECKED: F.CHRISPINE			
DRAWN: M.RUDKIN			
ASSEMBLY DRG:			

HARWIN

www.harwin.com

TOLERANCES  
X. =  $\pm 1\text{mm}$   
X.X =  $\pm 0.50\text{mm}$   
X.XX =  $\pm 0.20\text{mm}$   
X.XXX =  $\pm 0.01\text{mm}$   
ANGLES =  $\pm 5^\circ$   
UNLESS STATED

THIS DRAWING AND ANY INFORMATION OR DESCRIPTIVE MATTER SET OUT HEREON ARE CONFIDENTIAL AND COPYRIGHT PROPERTY OF THE HARWIN GROUP AND MUST NOT BE DISCLOSED, LOANED, COPIED OR USED FOR MANUFACTURING, TENDERING OR FOR ANY OTHER PURPOSE WITHOUT THEIR WRITTEN PERMISSION.

MATERIAL:  
  
SEE ABOVE

TITLE: KONA SERIES -  
FEMALE HORIZONTAL  
CONTACT WITH LATCHING COLLAR

DRAWING NUMBER:  
KA1-0500005

SHT  
2  
OF  
2