

Customer Information Sheet

IF IN DOUBT - ASK

©

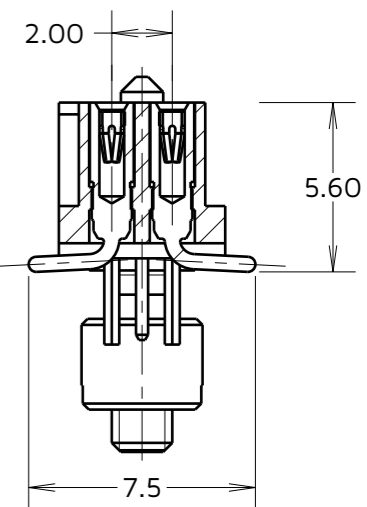
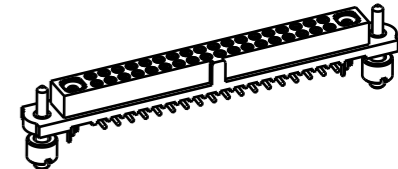
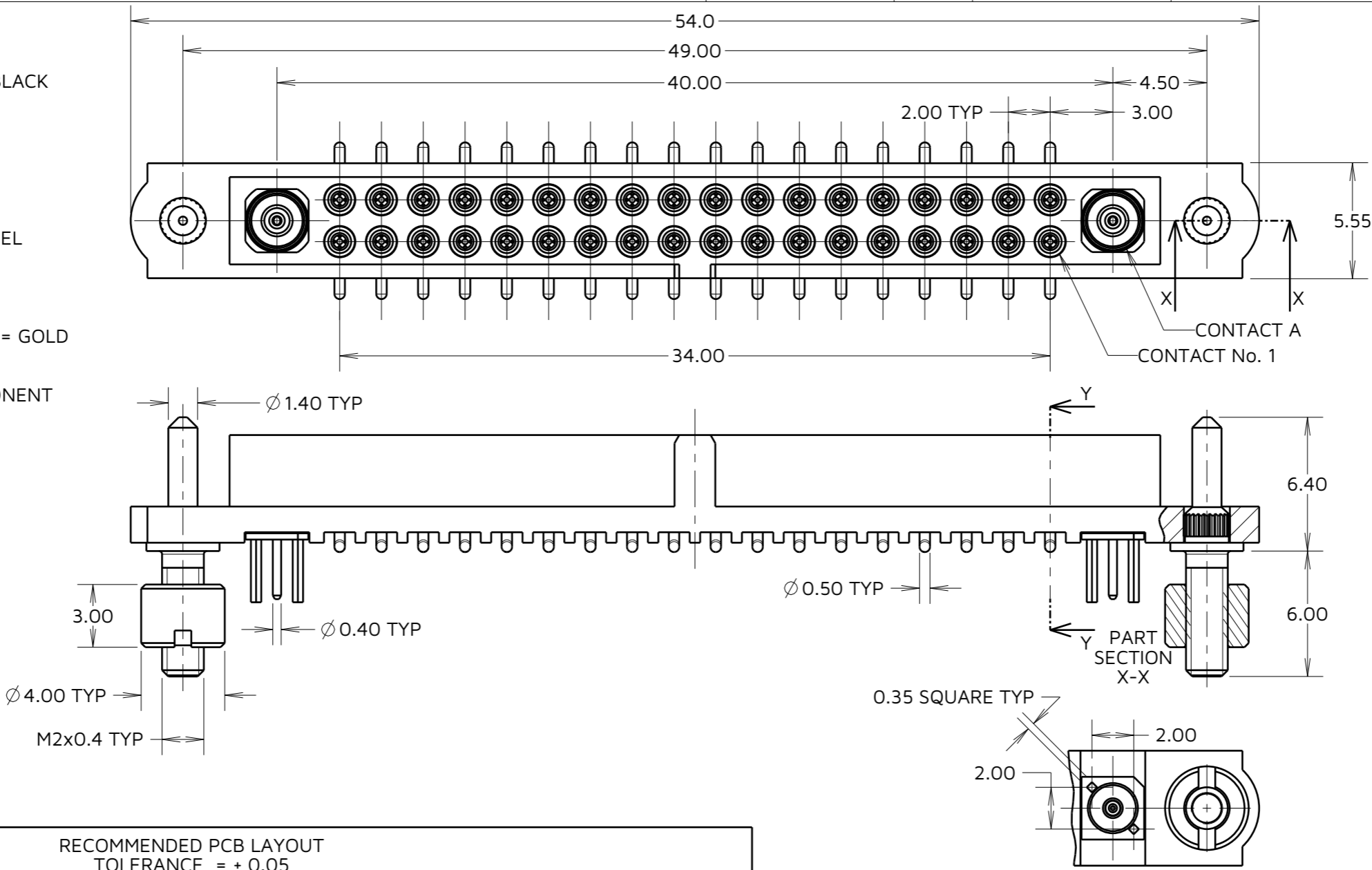
NOT TO SCALE

THIRD ANGLE PROJECTION

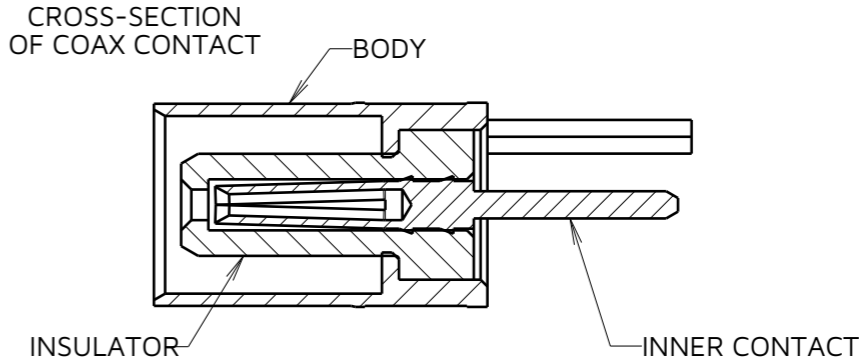
ALL DIMENSIONS IN mm

SPECIFICATIONS:

MATERIAL:
HOUSING = GLASS FILLED PPS, UL94V-0, BLACK
SIGNAL CONTACT:
CLIP = BERYLLIUM COPPER
SHELL = BRASS
COAX CONTACT:
BODY = COPPER ALLOY
INNER CONTACT = BERYLLIUM COPPER
INSULATOR = PTFE
BM GUIDE PIN AND NUT = STAINLESS STEEL
FINISH:
SIGNAL CONTACT:
CLIP = GOLD
SHELL = TIN/LEAD
COAX CONTACT = BODY, INNER CONTACT = GOLD
PACKING:
TUBE
FOR COMPLETE SPECIFICATION SEE COMPONENT
SPECIFICATION C005XX (LATEST ISSUE)



SECTION Y-Y



CROSS-SECTION OF COAX CONTACT

HARWIN

www.harwin.com

TOLERANCES
X. = $\pm 1\text{mm}$
X.X = $\pm 0.50\text{mm}$
X.XX = $\pm 0.20\text{mm}$
X.XXX = $\pm 0.01\text{mm}$
ANGLES = $\pm 5^\circ$
UNLESS STATED

THIS DRAWING AND ANY INFORMATION OR DESCRIPTIVE MATTER SET OUT HEREON ARE CONFIDENTIAL AND COPYRIGHT PROPERTY OF THE HARWIN GROUP AND MUST NOT BE DISCLOSED, LOANED, COPIED OR USED FOR MANUFACTURING, TENDERING OR FOR ANY OTHER PURPOSE WITHOUT THEIR WRITTEN PERMISSION.

MATERIAL & FINISH:

SEE ABOVE

TITLE: DATAMATE MIX-TEK
VERTICAL FEMALE ASSEMBLY
WITH BOARD MOUNT GUIDE PIN

DRAWING NUMBER: M80-4S13601FJ-01-301-01-301
SHT 2 OF 2

MJ	3	20.12.24	35293
NAME	ISS.	DATE	CN/CO
APPROVED: M. JELLEY			
CHECKED: R. ALEXANDER			
DRAWN: MARK G PLESTED			