

# Customer Information Sheet

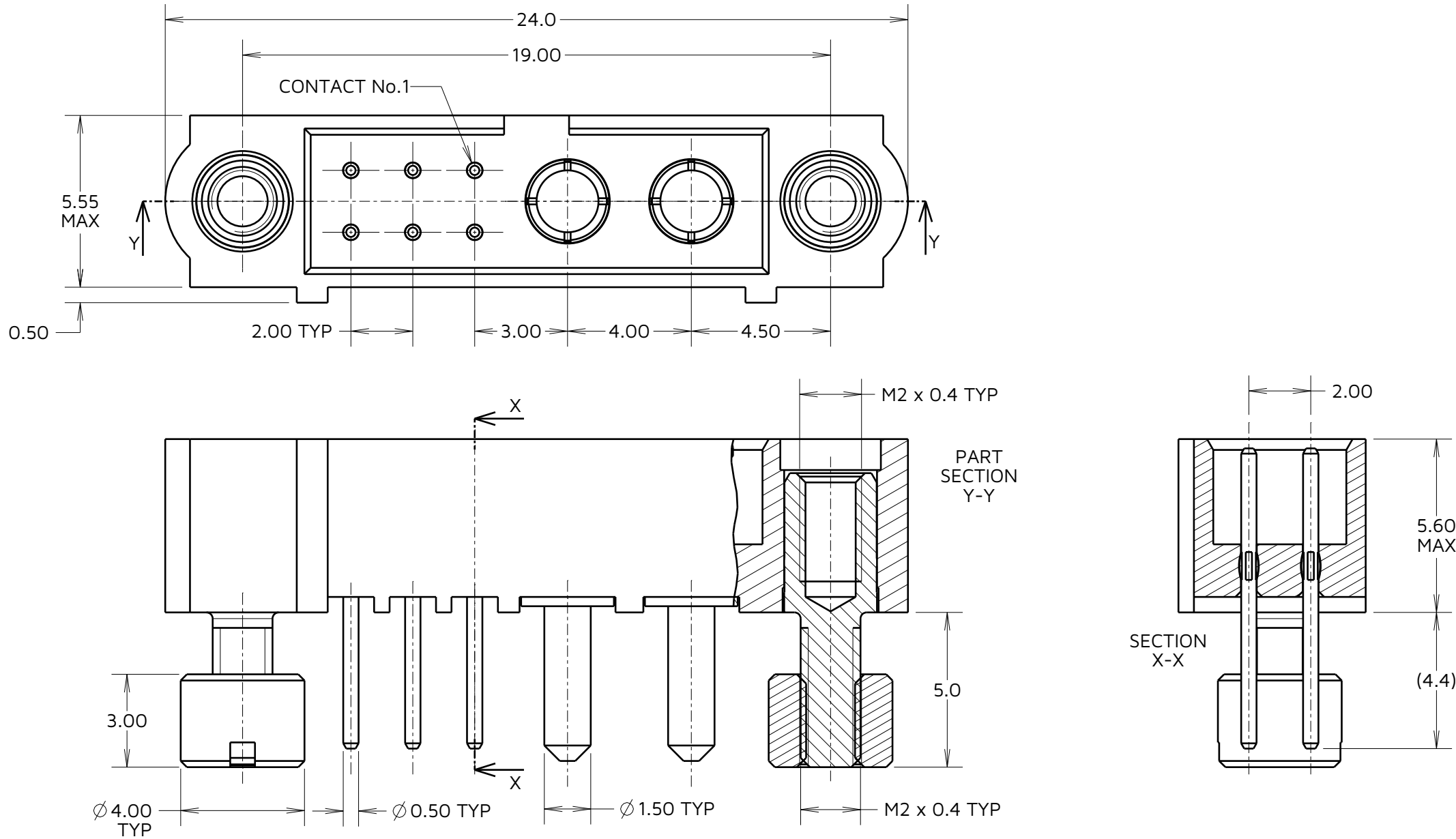
IF IN DOUBT - ASK

©

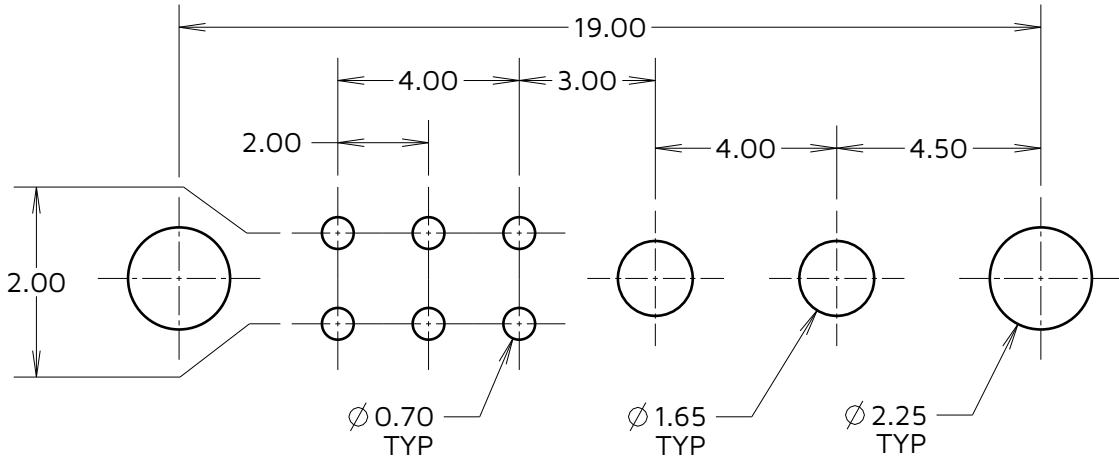
NOT TO SCALE

THIRD ANGLE PROJECTION

ALL DIMENSIONS IN mm



RECOMMENDED PCB LAYOUT  
(ALL TOLERANCES =  $\pm 0.05$ )



SPECIFICATIONS:  
MATERIAL:  
MOULDING: GLASS-FILLED PPS, UL94V-0, BLACK  
SIGNAL CONTACT: PHOSPHOR BRONZE  
POWER CONTACT: COPPER ALLOY  
BOARD-MOUNT JACKSCREW, NUT: STAINLESS STEEL  
FINISH:  
SIGNAL CONTACT: 0.75 $\mu$ m GOLD  
POWER CONTACT: GOLD  
PACKING: TUBE

FOR COMPLETE SPECIFICATION SEE COMPONENT  
SPECIFICATION C005XX (LATEST ISSUE)

NOTES:  
1. CONNECTORS ARE SUPPLIED WITH NUTS LOOSE.

**HARWIN**

[www.harwin.com](http://www.harwin.com)

TOLERANCES  
X. =  $\pm 1$ mm  
X.X =  $\pm 0.50$ mm  
X.XX =  $\pm 0.20$ mm  
X.XXX =  $\pm 0.01$ mm  
ANGLES =  $\pm 5^\circ$   
UNLESS STATED

THIS DRAWING AND ANY  
INFORMATION OR DESCRIPTIVE  
MATTER SET OUT HEREON ARE  
CONFIDENTIAL AND COPYRIGHT  
PROPERTY OF THE HARWIN GROUP  
AND MUST NOT BE DISCLOSED,  
LOANED, COPIED OR USED FOR  
MANUFACTURING, TENDERING OR FOR  
ANY OTHER PURPOSE WITHOUT THEIR  
WRITTEN PERMISSION.

MATERIAL:  
  
SEE ABOVE

TITLE: JACKSCREW DATAMATE  
MIXED TECHNOLOGY  
PC TAIL MALE ASSEMBLY

DRAWING NUMBER:  
M80-5T20605M3-02-332-00-000

SHT  
2  
OF  
2

RTP	1	22.06.23	32709
NAME	ISS.	DATE	CN/CO
APPROVED: M.PLESTED			
CHECKED: A.BOXALL			
DRAWN: R.PORTLOCK			
ASSEMBLY DRG:			