

# Customer Information Sheet

IF IN DOUBT - ASK

©

NOT TO SCALE

THIRD ANGLE PROJECTION

ALL DIMENSIONS IN mm

## SPECIFICATIONS:

### MATERIAL:

HOUSING: GLASS FILLED PPS, UL94V-0, BLACK

SIGNAL CONTACT: PHOSPHOR BRONZE

POWER CONTACT: COPPER ALLOY

BOARD-MOUNT JACKSCREW, SCREW: STAINLESS STEEL

### FINISH:

SIGNAL CONTACT:

GOLD ON CONTACT AREA,

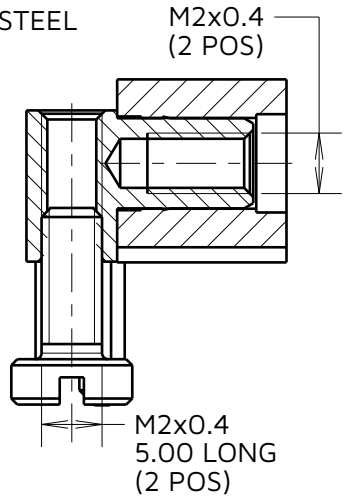
100% TIN OVER NICKEL ON TAILS

POWER CONTACT: GOLD

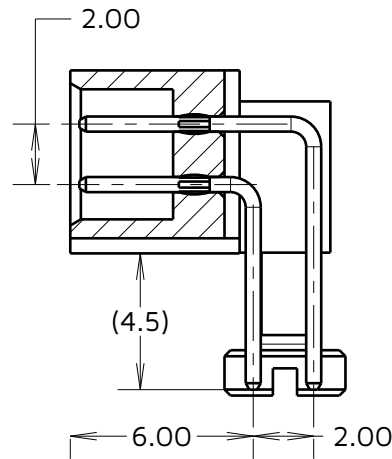
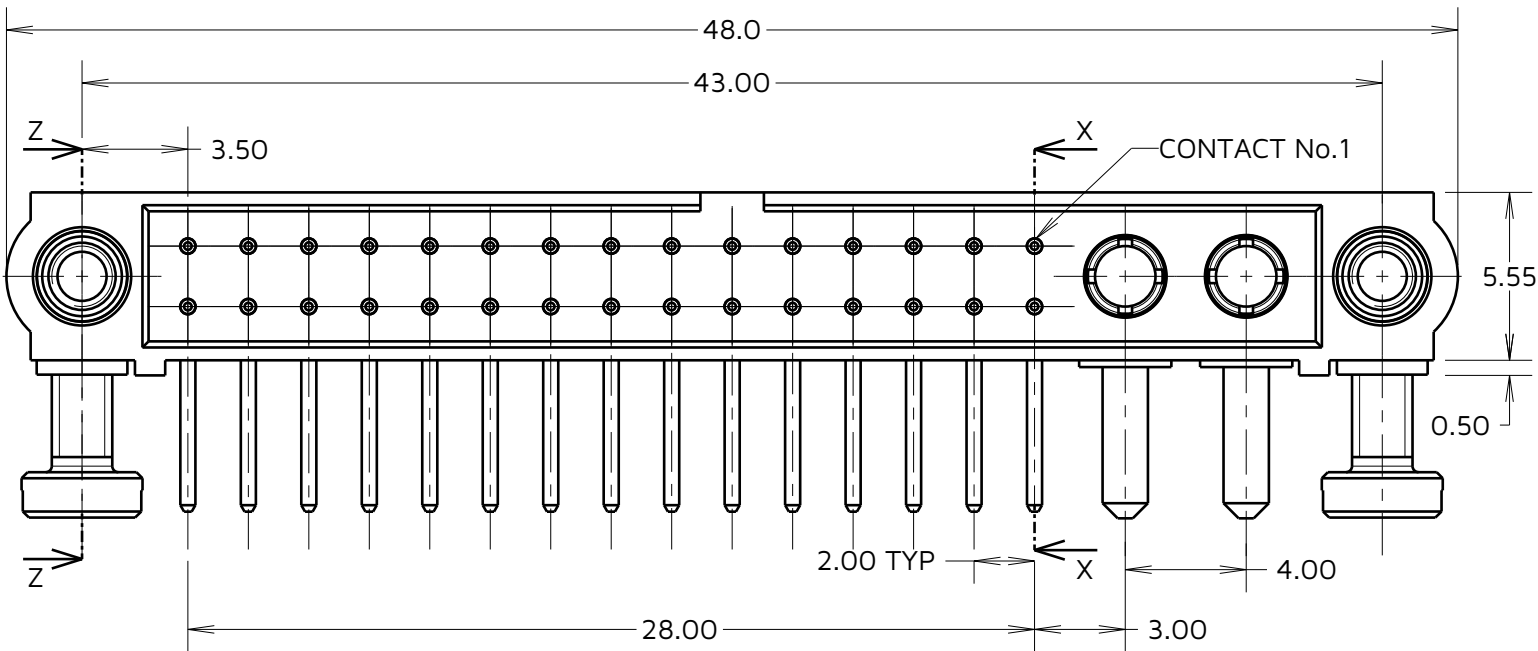
### PACKING:

TUBE

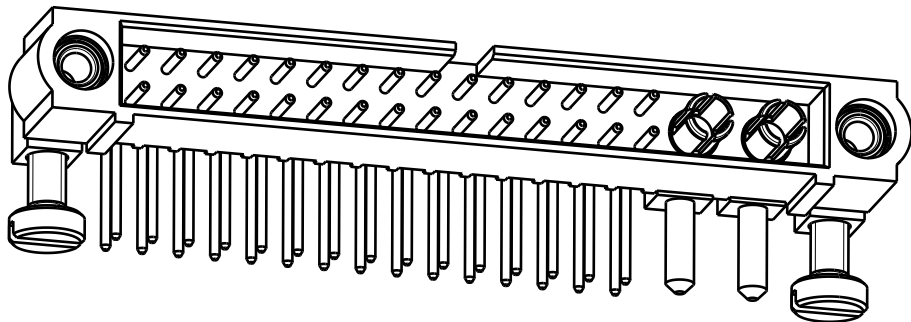
FOR COMPLETE SPECIFICATION SEE COMPONENT SPECIFICATION C005XX (LATEST ISSUE)



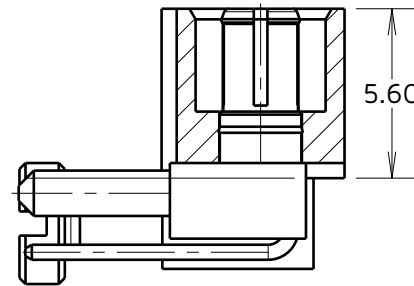
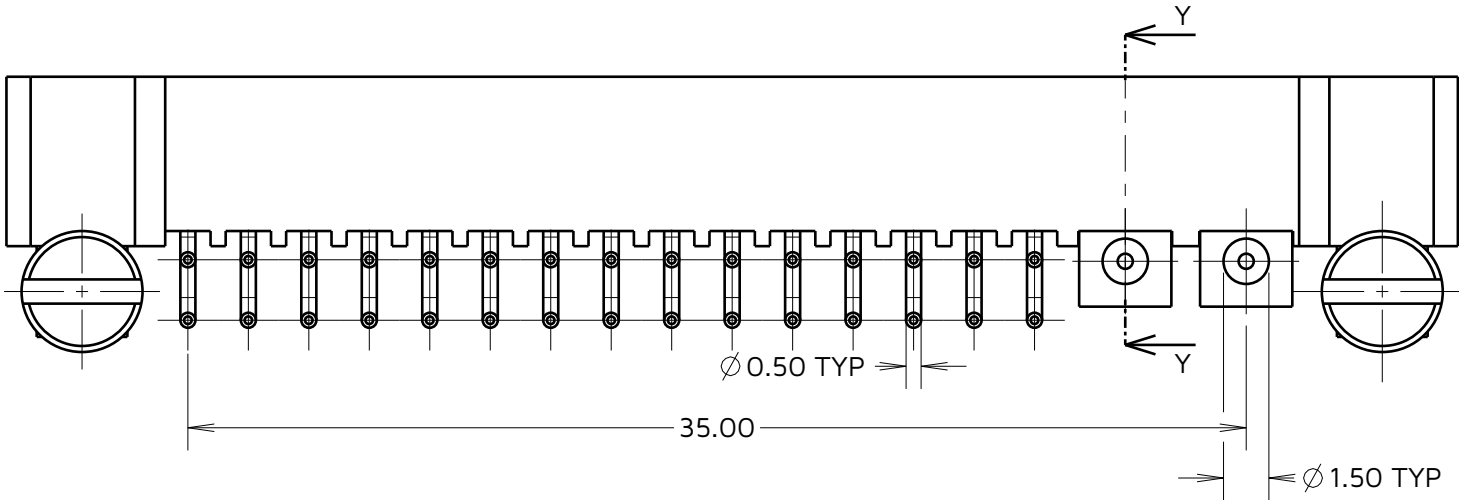
SECTION Z-Z



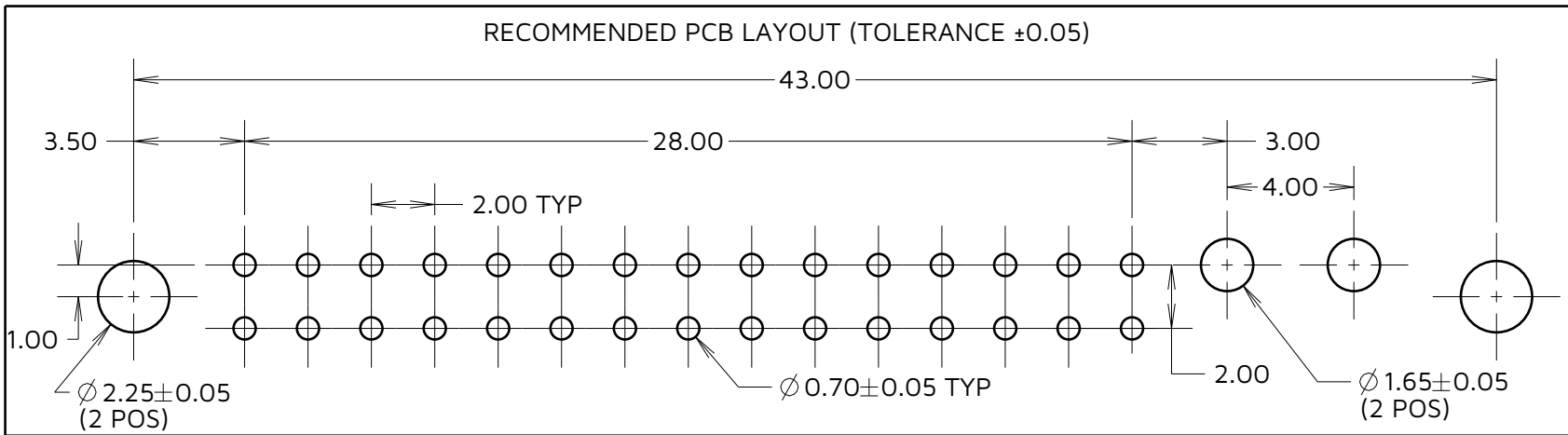
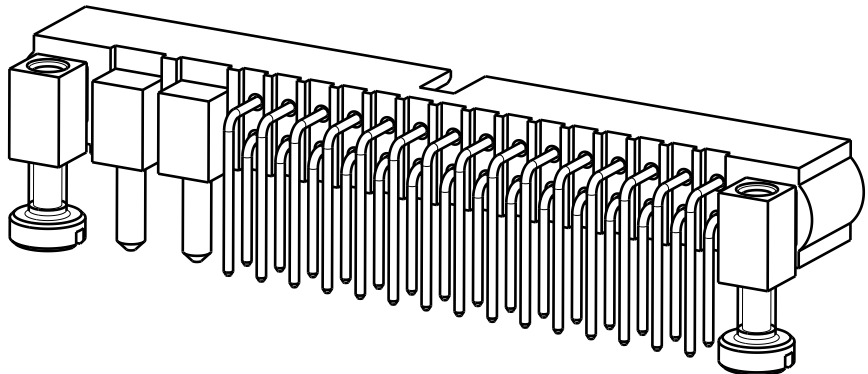
SECTION X-X



COMPLETE ASSEMBLY SHOWN FOR ILLUSTRATION ONLY



SECTION Y-Y



### NOTES:

1. SCREWS ARE PACKED LOOSE IN A BAG NOT ASSEMBLED AS SHOWN

HARWIN

www.harwin.com

### TOLERANCES

X. =  $\pm 1\text{mm}$

X.X =  $\pm 0.50\text{mm}$

X.XX =  $\pm 0.20\text{mm}$

X.XXX =  $\pm 0.01\text{mm}$

ANGLES =  $\pm 5^\circ$

UNLESS STATED

THIS DRAWING AND ANY INFORMATION OR DESCRIPTIVE MATTER SET OUT HEREON ARE CONFIDENTIAL AND COPYRIGHT PROPERTY OF THE HARWIN GROUP AND MUST NOT BE DISCLOSED, LOANED, COPIED OR USED FOR MANUFACTURING, TENDERING OR FOR ANY OTHER PURPOSE WITHOUT THEIR WRITTEN PERMISSION.

### MATERIAL & FINISH:

SEE ABOVE

TITLE: JACKSCREW DATAMATE MIXED TECHNOLOGY PC TAIL MALE ASSEMBLY

DRAWING NUMBER: M80-5L23042M5-02-334-00-000

SHT 2 OF 2

|           |      |            |       |
|-----------|------|------------|-------|
| MJ        | 3    | 07.11.24   | 34803 |
| NAME      | ISS. | DATE       | CN/CO |
| APPROVED: |      | M. JELLEY  |       |
| CHECKED:  |      | A. YEOMANS |       |
| DRAWN:    |      | R.ADDE     |       |