

# Customer Information Sheet

IF IN DOUBT - ASK

©

NOT TO SCALE

THIRD ANGLE PROJECTION

ALL DIMENSIONS IN mm

TABLE 1(A): ORDER CODE CONFIGURATIONS

M80-XCXXX-XX-XXXXL									
M80	-	FC	1 2	05	-	XX	-	XXXX	L
				08					
				07					
				09					
				10					
		MC	1 A U	15					
				18					
				17					
				19					

TABLE 1(B): BOM ITEM No.

①	②	③
CONNECTOR WITH HARDWARE (SEE ORDER CODE FOR TOTAL No. OF CONTACTS)	COAX WIRE	CONNECTOR CONTACT (SEE ORDER CODE FOR QTY.)
M80-263F1XX-00-00 M80-263F2XX-00-00	WIM2284 (RG178)	M80-305
		M80-308
	WIM2286 (RG316)	M80-307
		M80-309
	WIM2889 (UT-047)	M80-310
M80-273M1XX-00-00 M80-273MAXX-00-00 M80-273MUXX-00-00	WIM2284 (RG178)	M80-315
		M80-318
	WIM2286 (RG316)	M80-317
		M80-319

- NOTES:
- CABLE ASSEMBLIES WILL BE BULK PACKED IN BAGS.
  - WIRING OF CONNECTORS:  
CONTACT NO.1 TO CONTACT NO.1, CONTACT NO.2 TO CONTACT NO.2, ETC.
  - FOR COMPLETE SPECIFICATION, INCLUDING WIRE TYPE AND GAUGE SEE  
COMPONENT SPECIFICATIONS C005XX & C049XX (LATEST ISSUES).
  - FOR FEMALE STRAIGHT AND HORIZONTAL CONFIGURATIONS SEE SHEET 7,  
FOR MALE STRAIGHT AND HORIZONTAL CONGRATIONS SEE SHEET 8.
  - CUSTOM LENGTH CABLE ASSEMBLIES CAN BE PRODUCED FROM 60mm  
TO 9999mm.
  - FOR FIXING IDENTIFICATION & DIMENSIONS SEE SHEET 10.

ORDER CODE:  
**M80-XCXXX-XX-XXXXL**

CONNECTOR 1:  
F = FEMALE  
M = MALE

CONTACT TYPE:  
C = COAX

CONNECTOR 1 FIXING:  
1 = M1/F1    A = MA  
2 = F2        U = MU

:DIM 'D' LENGTH  
0060 = 60mm MIN  
9999 = 9999mm MAX

:TOTAL No. OF CONTACTS  
02 TO 12

CONNECTOR 1 CONTACT:  
SEE BOM TABLE FOR  
IDENTIFICATION.

FC	2	19.12.23	32306
NAME	ISS.	DATE	CN/CO
APPROVED: A.BOXALL			
CHECKED: F.CHRISPINE			
DRAWN: R.PORTLOCK			
ASSEMBLY DRG:			

HARWIN

www.harwin.com

TOLERANCES  
X. = ±1mm  
X.X = ±0.50mm  
X.XX = ±0.20mm  
X.XXX = ±0.01mm  
ANGLES = ±5°  
UNLESS STATED

THIS DRAWING AND ANY  
INFORMATION OR DESCRIPTIVE  
MATTER SET OUT HEREON ARE  
CONFIDENTIAL AND COPYRIGHT  
PROPERTY OF THE HARWIN GROUP  
AND MUST NOT BE DISCLOSED,  
LOANED, COPIED OR USED FOR  
MANUFACTURING, TENDERING OR FOR  
ANY OTHER PURPOSE WITHOUT THEIR  
WRITTEN PERMISSION.

MATERIAL:  
  
SEE ABOVE

TITLE: DATAMATE MIX-TEK  
SINGLE-ENDED  
CABLE ASSEMBLY

DRAWING NUMBER:  
M80-XCXXX-XX-XXXXL

SHT  
6  
OF  
10

# Customer Information Sheet

IF IN DOUBT - ASK

©

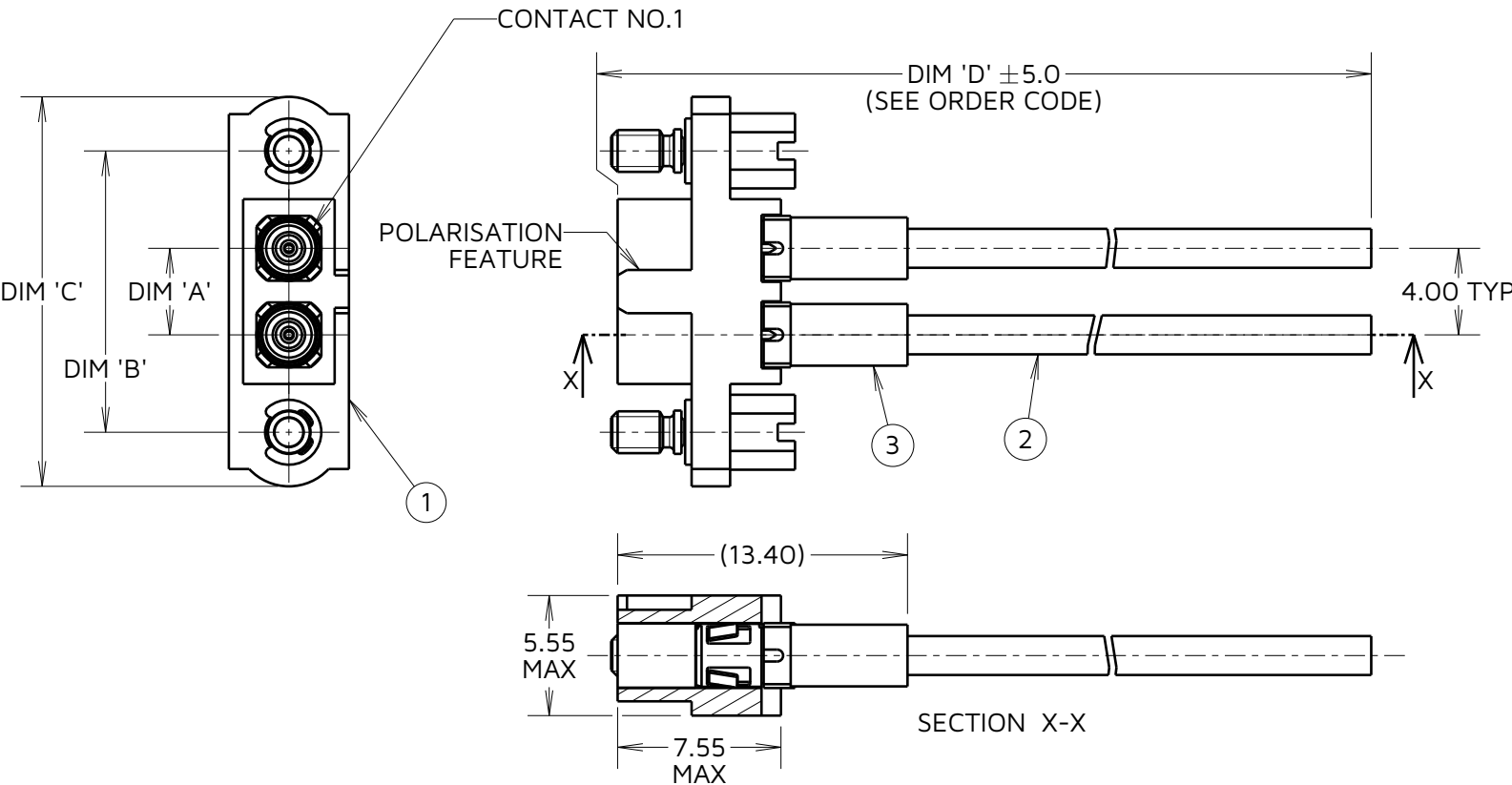
NOT TO SCALE

THIRD ANGLE PROJECTION

ALL DIMENSIONS IN mm

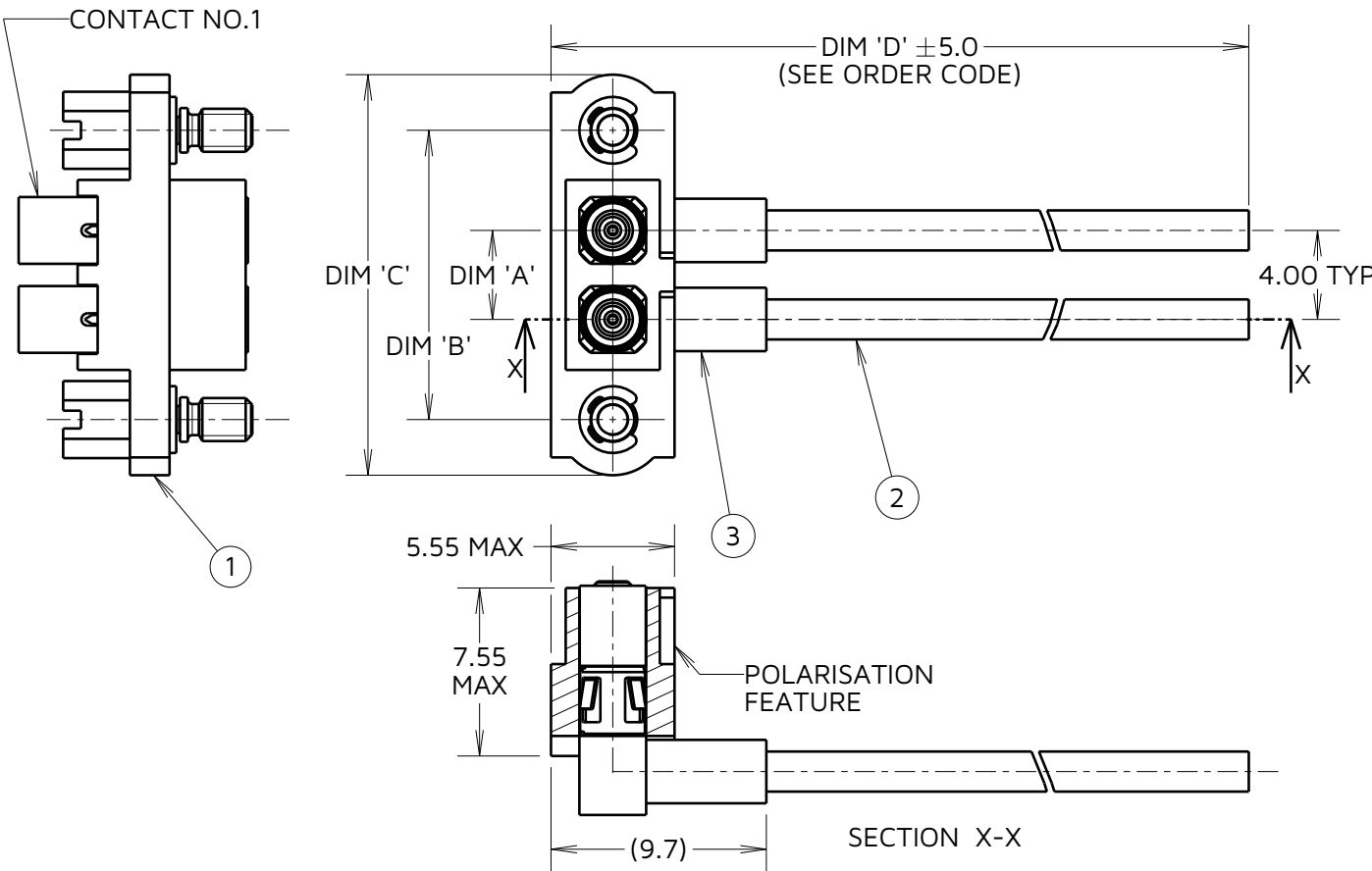
## FEMALE STRAIGHT CONFIGURATION

EXAMPLE: M80-FC105-02-XXXXL



## FEMALE HORIZONTAL CONFIGURATION

EXAMPLE: M80-FC108-02-XXXXL



ORDER CODE:

**M80-XCXXX-XX-XXXXL**

CONNECTOR 1:

F = FEMALE

M = MALE

CONTACT TYPE:

C = COAX

CONNECTOR 1 FIXING:

1 = M1/F1 A = MA

2 = F2 U = MU

:DIM 'D' LENGTH

0060 = 60mm MIN

9999 = 9999mm MAX

:TOTAL No. OF CONTACTS

02 TO 12

CONNECTOR 1 CONTACT:  
SEE BOM TABLE FOR  
IDENTIFICATION.

TABLE 2: DIMENSIONS

DIMENSION	MEASUREMENT
DIM 'A'	TOTAL No. OF CONTACTS - 2.0
DIM 'B'	TOTAL No. OF CONTACTS + 5.0
DIM 'C'	TOTAL No. OF CONTACT + 10.0

EXAMPLE PART No.:  
4-WAY M80-315 MALE COAX CONTACT  
CONNECTOR ASSEMBLY  
WITH HEX HARDWARE AND 150mm CABLES =  
M80-MC115-04-0150L

NOTES :

7. (X) = BOM ITEM No. SEE TABLE ON SHEET 6.
8. SEE BILL OF MATERIALS ON SHEET 6 FOR PART IDENTIFICATION AND POSSIBLE CONTACT COMBINATIONS. ONLY CONTACTS COMPATIBLE WITH THE SAME WIRE CAN BE COMBINED IN AN ASSEMBLY.
9. SEE SHEET 10 FOR FIXING IDENTIFICATION & FIXING DIMENSIONS.
10. SEE SHEET 9 FOR CONTACT IDENTIFICATION.

FC	2	19.12.23	32306
NAME	ISS.	DATE	CN/CO
APPROVED: A.BOXALL			
CHECKED: F.CHRISPINE			
DRAWN: R.PORTLOCK			
ASSEMBLY DRG:			

**HARWIN**

www.harwin.com

TOLERANCES

X. = ±1mm  
X.X = ±0.50mm  
X.XX = ±0.20mm  
X.XXX = ±0.01mm

ANGLES = ±5°  
UNLESS STATED

THIS DRAWING AND ANY  
INFORMATION OR DESCRIPTIVE  
MATTER SET OUT HEREON ARE  
CONFIDENTIAL AND COPYRIGHT  
PROPERTY OF THE HARWIN GROUP  
AND MUST NOT BE DISCLOSED,  
LOANED, COPIED OR USED FOR  
MANUFACTURING, TENDERING OR FOR  
ANY OTHER PURPOSE WITHOUT THEIR  
WRITTEN PERMISSION.

MATERIAL:

SEE SHEET 6

TITLE: **DATAMATE MIX-TEK  
SINGLE-ENDED  
CABLE ASSEMBLY**

DRAWING NUMBER:

**M80-XCXXX-XX-XXXXL**

SHT  
7  
OF  
10

# Customer Information Sheet

IF IN DOUBT - ASK

©

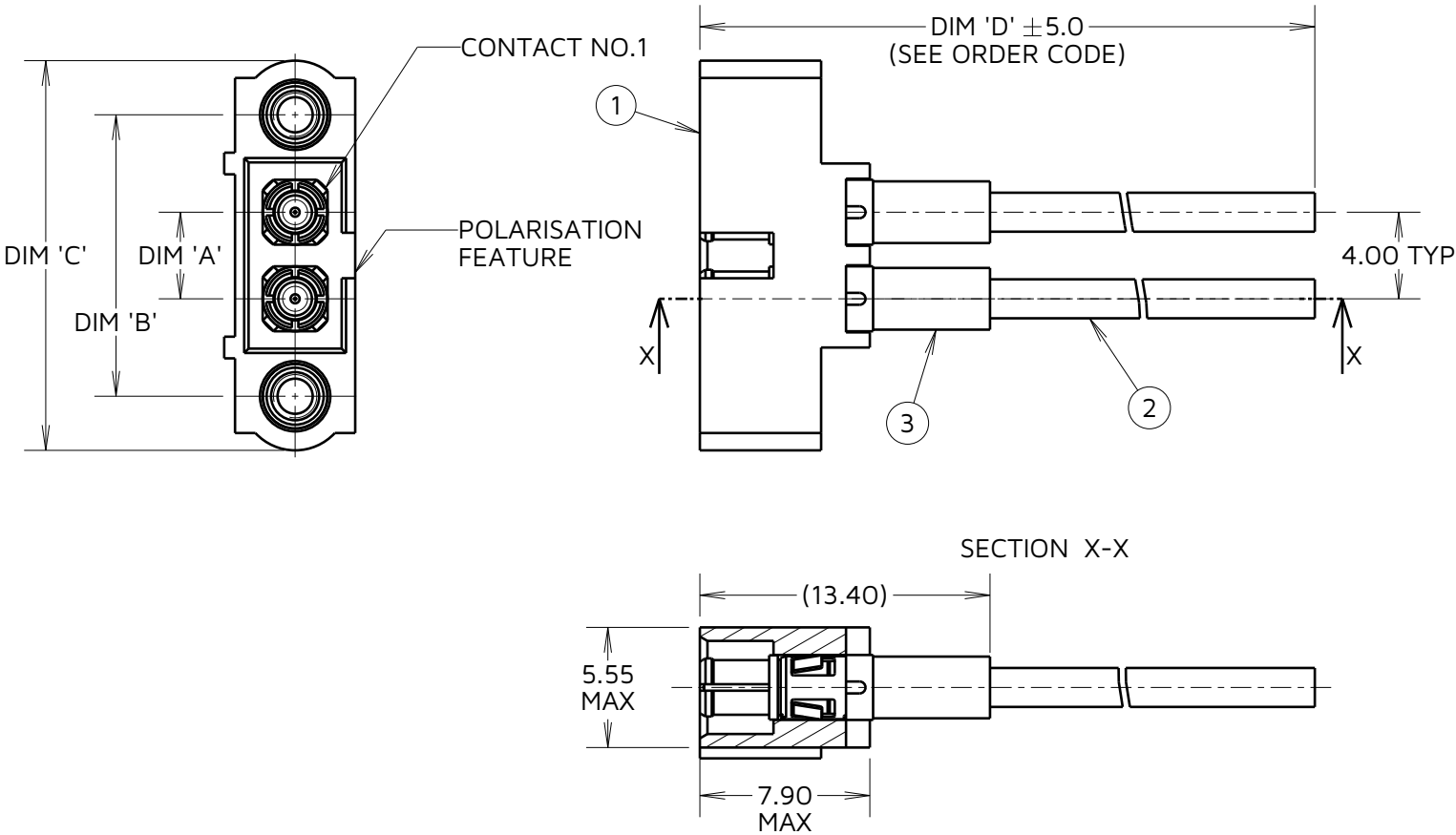
NOT TO SCALE

THIRD ANGLE PROJECTION

ALL DIMENSIONS IN mm

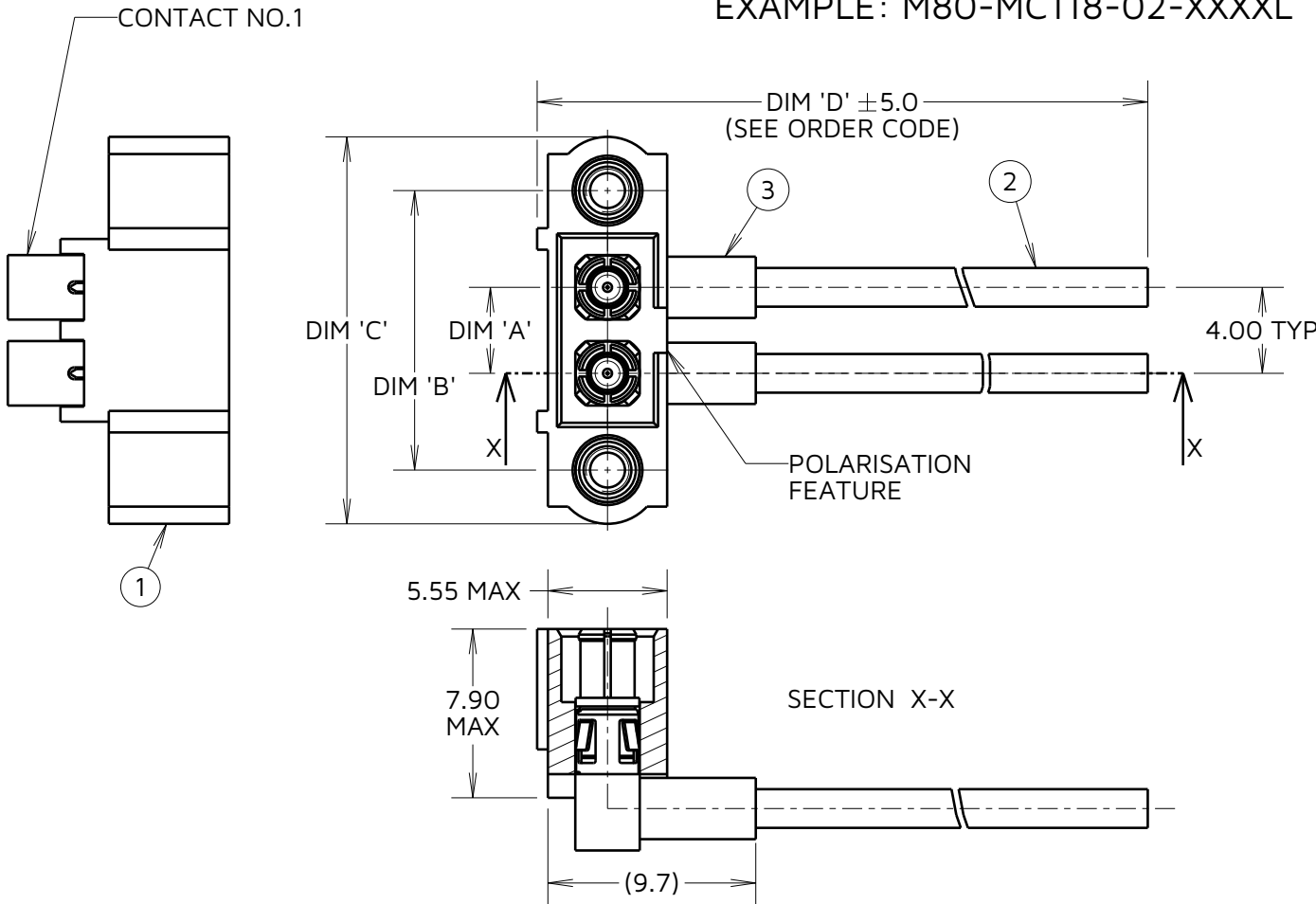
## MALE STRAIGHT CONFIGURATION

EXAMPLE: M80-MC115-02-XXXXL



## MALE HORIZONTAL CONFIGURATION

EXAMPLE: M80-MC118-02-XXXXL



ORDER CODE:  
**M80-XCXXX-XX-XXXXL**

CONNECTOR 1: \_\_\_\_\_  
F = FEMALE  
M = MALE  
CONTACT TYPE: \_\_\_\_\_  
C = COAX  
CONNECTOR 1 FIXING: \_\_\_\_\_  
1 = M1/F1 A = MA  
2 = F2 U = MU  
CONNECTOR 1 CONTACT: SEE BOM TABLE FOR IDENTIFICATION.

:DIM 'D' LENGTH  
0060 = 60mm MIN  
9999 = 9999mm MAX  
:TOTAL No. OF CONTACTS  
02 TO 12

TABLE 1: DIMENSIONS

DIMENSION	MEASUREMENT
DIM 'A'	TOTAL No. OF CONTACTS - 2.0
DIM 'B'	TOTAL No. OF CONTACTS + 5.0
DIM 'C'	TOTAL No. OF CONTACT + 10.0
EXAMPLE PART No.: 4-WAY M80-315 MALE COAX CONTACT CONNECTOR ASSEMBLY WITH HEX HARDWARE AND 150mm CABLES = M80-MC115-04-0150L	

NOTES :  
11.(X) = BOM ITEM No. SEE TABLE ON SHEET 6.  
12.SEE BILL OF MATERIALS ON SHEET 6 FOR PART IDENTIFICATION AND POSSIBLE CONTACT COMBINATIONS.ONLY CONTACTS COMPATIBLE WITH THE SAME WIRE CAN BE COMBINED IN AN ASSEMBLY.  
13.SEE SHEET 10 FOR FIXING IDENTIFICATION & FIXING DIMENSIONS.  
14.SEE SHEET 9 FOR CONTACT IDENTIFICATION.

FC	2	19.12.23	32306
NAME	ISS.	DATE	CN/CO
APPROVED: A.BOXALL			
CHECKED: F.CHRISPINE			
DRAWN: R.PORTLOCK			
ASSEMBLY DRG:			

**HARWIN**

www.harwin.com

TOLERANCES  
X. = ±1mm  
X.X = ±0.50mm  
X.XX = ±0.20mm  
X.XXX = ±0.01mm  
ANGLES = ±5°  
UNLESS STATED

THIS DRAWING AND ANY INFORMATION OR DESCRIPTIVE MATTER SET OUT HEREON ARE CONFIDENTIAL AND COPYRIGHT PROPERTY OF THE HARWIN GROUP AND MUST NOT BE DISCLOSED, LOANED, COPIED OR USED FOR MANUFACTURING, TENDERING OR FOR ANY OTHER PURPOSE WITHOUT THEIR WRITTEN PERMISSION.

MATERIAL:  
  
SEE SHEET 6

TITLE: **DATAMATE MIX-TEK  
SINGLE-ENDED  
CABLE ASSEMBLY**

DRAWING NUMBER:  
**M80-XCXXX-XX-XXXXL**

SHT  
8  
OF  
10

# Customer Information Sheet

IF IN DOUBT - ASK

©

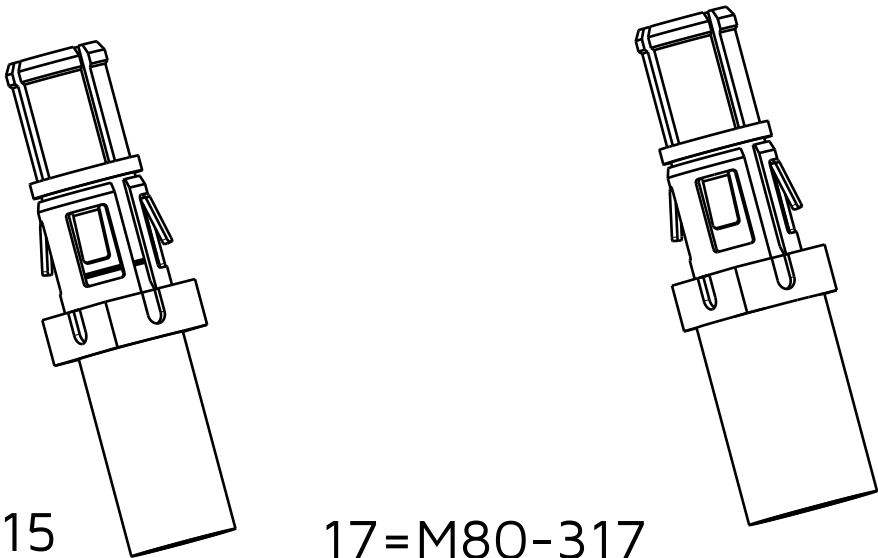
NOT TO SCALE

THIRD ANGLE PROJECTION

ALL DIMENSIONS IN mm

## CONTACT IDENTIFICATION

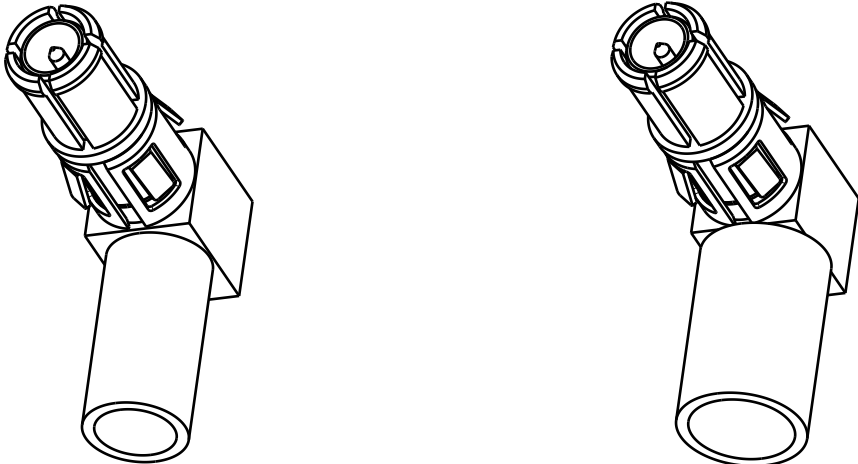
### MALE STRAIGHT CONTACTS



15=M80-315  
(CRIMP)

17=M80-317  
(CRIMP)

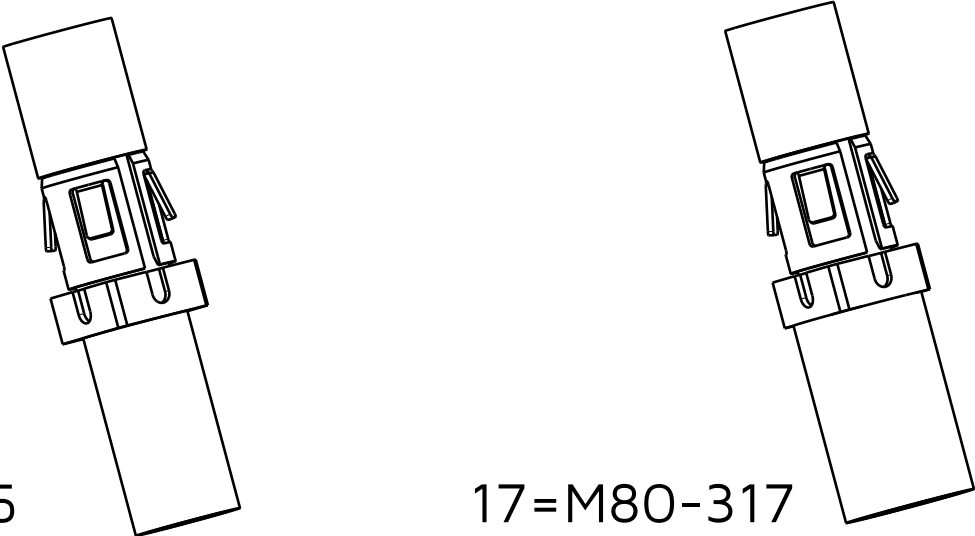
### MALE HORIZONTAL CONTACTS



18=M80-318  
(CRIMP)

19=M80-319  
(CRIMP)

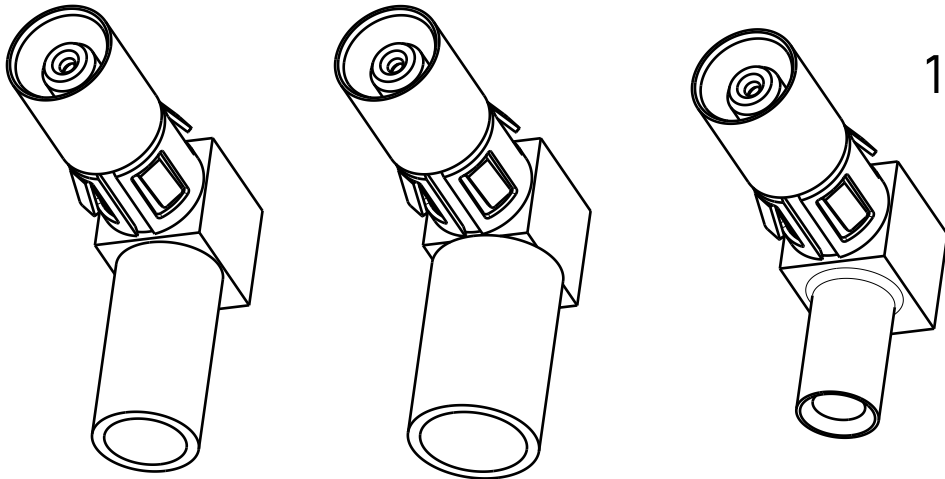
### FEMALE STRAIGHT CONTACTS



05=M80-305  
(CRIMP)

17=M80-317  
(CRIMP)

### FEMALE HORIZONTAL CONTACTS



08=M80-308  
(CRIMP)

09=M80-309  
(CRIMP)

10=M80-310  
(CRIMP)

ORDER CODE: M80-XCXXX-XX-XXXXL

CONNECTOR 1: \_\_\_\_\_

F = FEMALE

M = MALE

CONTACT TYPE: \_\_\_\_\_

C = COAX

CONNECTOR 1 FIXING: \_\_\_\_\_

1 = M1/F1 A = MA

2 = F2 U = MU

:DIM 'D' LENGTH

0060 = 60mm MIN

9999 = 9999mm MAX

:TOTAL No. OF CONTACTS

02 TO 12

CONNECTOR 1 CONTACT:

SEE BOM TABLE FOR IDENTIFICATION.

HARWIN

www.harwin.com

#### TOLERANCES

X. =  $\pm 1\text{mm}$   
X.X =  $\pm 0.50\text{mm}$   
X.XX =  $\pm 0.20\text{mm}$   
X.XXX =  $\pm 0.01\text{mm}$   
ANGLES =  $\pm 5^\circ$   
UNLESS STATED

THIS DRAWING AND ANY INFORMATION OR DESCRIPTIVE MATTER SET OUT HEREON ARE CONFIDENTIAL AND COPYRIGHT PROPERTY OF THE HARWIN GROUP AND MUST NOT BE DISCLOSED, LOANED, COPIED OR USED FOR MANUFACTURING, TENDERING OR FOR ANY OTHER PURPOSE WITHOUT THEIR WRITTEN PERMISSION.

#### MATERIAL:

SEE SHEET 6

TITLE: DATAMATE MIX-TEK  
SINGLE-ENDED  
CABLE ASSEMBLY

DRAWING NUMBER:  
M80-XCXXX-XX-XXXXL

SHT  
9  
OF  
10

FC	2	19.12.23	32306
NAME	ISS.	DATE	CN/CO
APPROVED: A.BOXALL			
CHECKED: F.CHRISPINE			
DRAWN: R.PORTLOCK			
ASSEMBLY DRG:			

# Customer Information Sheet

IF IN DOUBT - ASK

©

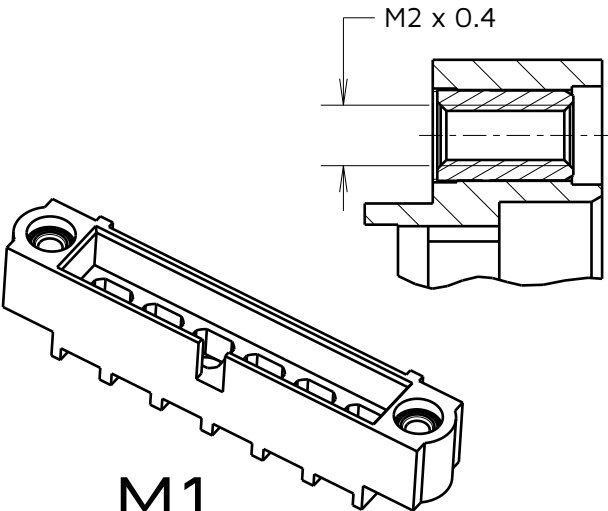
NOT TO SCALE

THIRD ANGLE PROJECTION

ALL DIMENSIONS IN mm

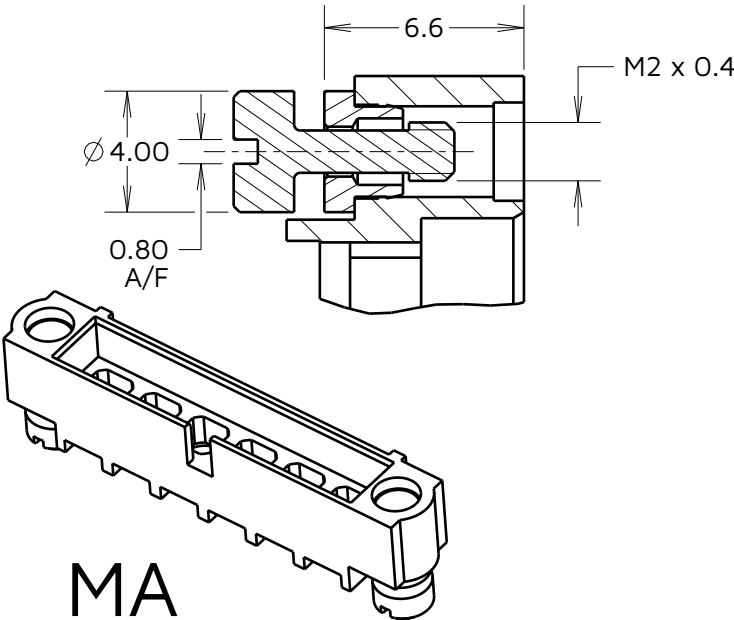
## HOUSING FIXING IDENTIFICATION

### MALE FIXING TYPES



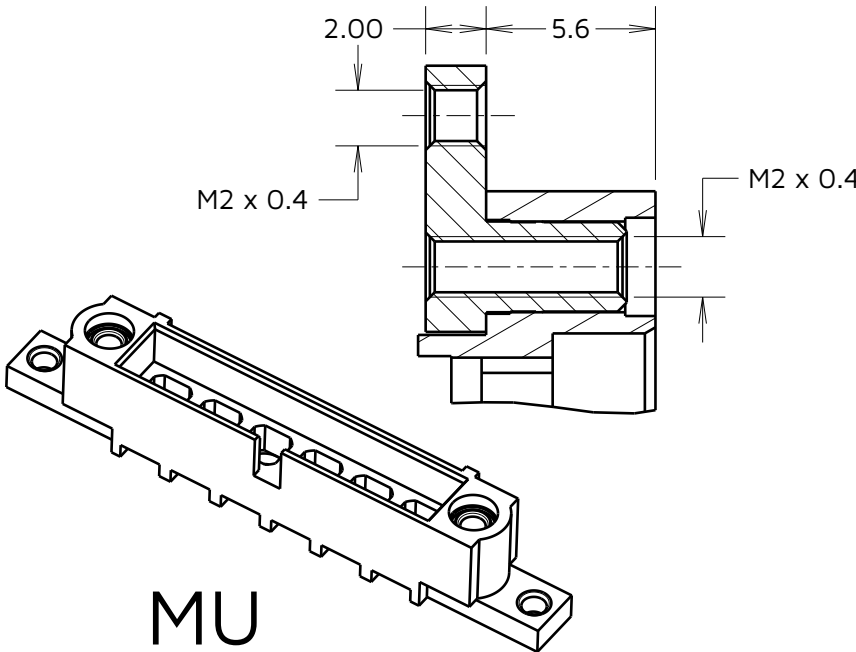
M1

EXAMPLE: M80-273M1XX-00-00



MA

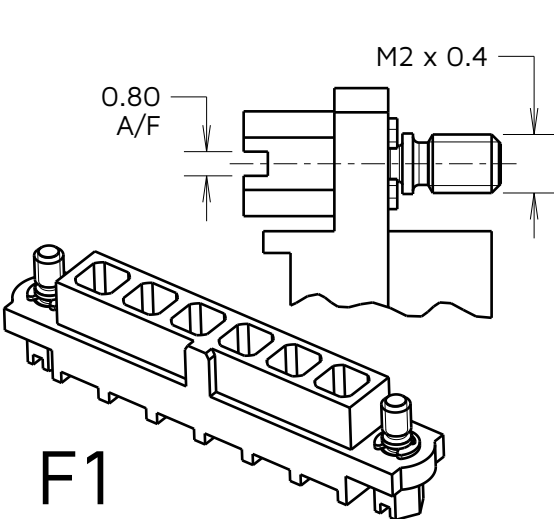
EXAMPLE: M80-273MAXX-00-00



MU

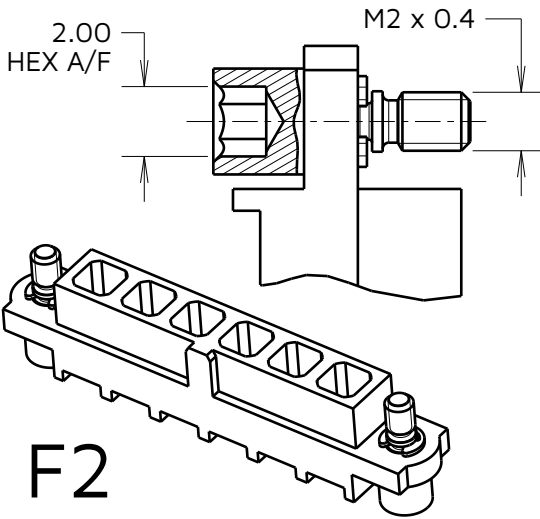
EXAMPLE: M80-273MUXX-00-00

### FEMALE FIXING TYPES



F1

EXAMPLE: M80-263F1XX-00-00



F2

EXAMPLE: M80-263F2XX-00-00

## FIXING IDENTIFICATION

ORDER CODE:

M80-XCXXX-XX-XXXXL

CONNECTOR 1:

F = FEMALE

M = MALE

CONTACT TYPE:

C = COAX

CONNECTOR 1 FIXING:

1 = M1/F1 A = MA

2 = F2 U = MU

:DIM 'D' LENGTH  
0060 = 60mm MIN  
9999 = 9999mm MAX

:TOTAL No. OF CONTACTS  
02 TO 12

CONNECTOR 1 CONTACT:  
SEE BOM TABLE FOR  
IDENTIFICATION.

- NOTES :
16. SEE BILL OF MATERIALS TABLE ON SHEET 6 AND ORDER CODE FOR FIXING IDENTIFICATION.
17. FURTHER DETAILS (INCLUDING PANEL CUT OUT DIMENSIONS FOR 'MU') CAN BE FOUND ON THE RESPECTIVE CONNECTOR WITH HARDWARE DRAWINGS (EG. M80-263F1XX-XX-XX FOR F1).
18. 6-WAY CONNECTORS SHOWN FOR ILLUSTRATIVE PURPOSES ONLY, SEE ORDER CODE FOR TOTAL No. OF CONTACTS.

HARWIN

www.harwin.com

### TOLERANCES

X. =  $\pm 1\text{mm}$   
X.X =  $\pm 0.50\text{mm}$   
X.XX =  $\pm 0.20\text{mm}$   
X.XXX =  $\pm 0.01\text{mm}$   
ANGLES =  $\pm 5^\circ$   
UNLESS STATED

THIS DRAWING AND ANY INFORMATION OR DESCRIPTIVE MATTER SET OUT HEREON ARE CONFIDENTIAL AND COPYRIGHT PROPERTY OF THE HARWIN GROUP AND MUST NOT BE DISCLOSED, LOANED, COPIED OR USED FOR MANUFACTURING, TENDERING OR FOR ANY OTHER PURPOSE WITHOUT THEIR WRITTEN PERMISSION.

### MATERIAL:

SEE SHEET 6

TITLE: DATAMATE MIX-TEK  
SINGLE-ENDED  
CABLE ASSEMBLY

DRAWING NUMBER:  
M80-XCXXX-XX-XXXXL

SHT  
10  
OF  
10

FC	2	19.12.23	32306
NAME	ISS.	DATE	CN/CO
APPROVED: A.BOXALL			
CHECKED: F.CHRISPINE			
DRAWN: R.PORTLOCK			
ASSEMBLY DRG:			