

# Customer Information Sheet

DRAWING No.: M80-4C11005F3-02-PF5-00-000

SHEET 2 OF 2

IF IN DOUBT - ASK

©

NOT TO SCALE

THIRD ANGLE PROJECTION

ALL DIMENSIONS IN mm

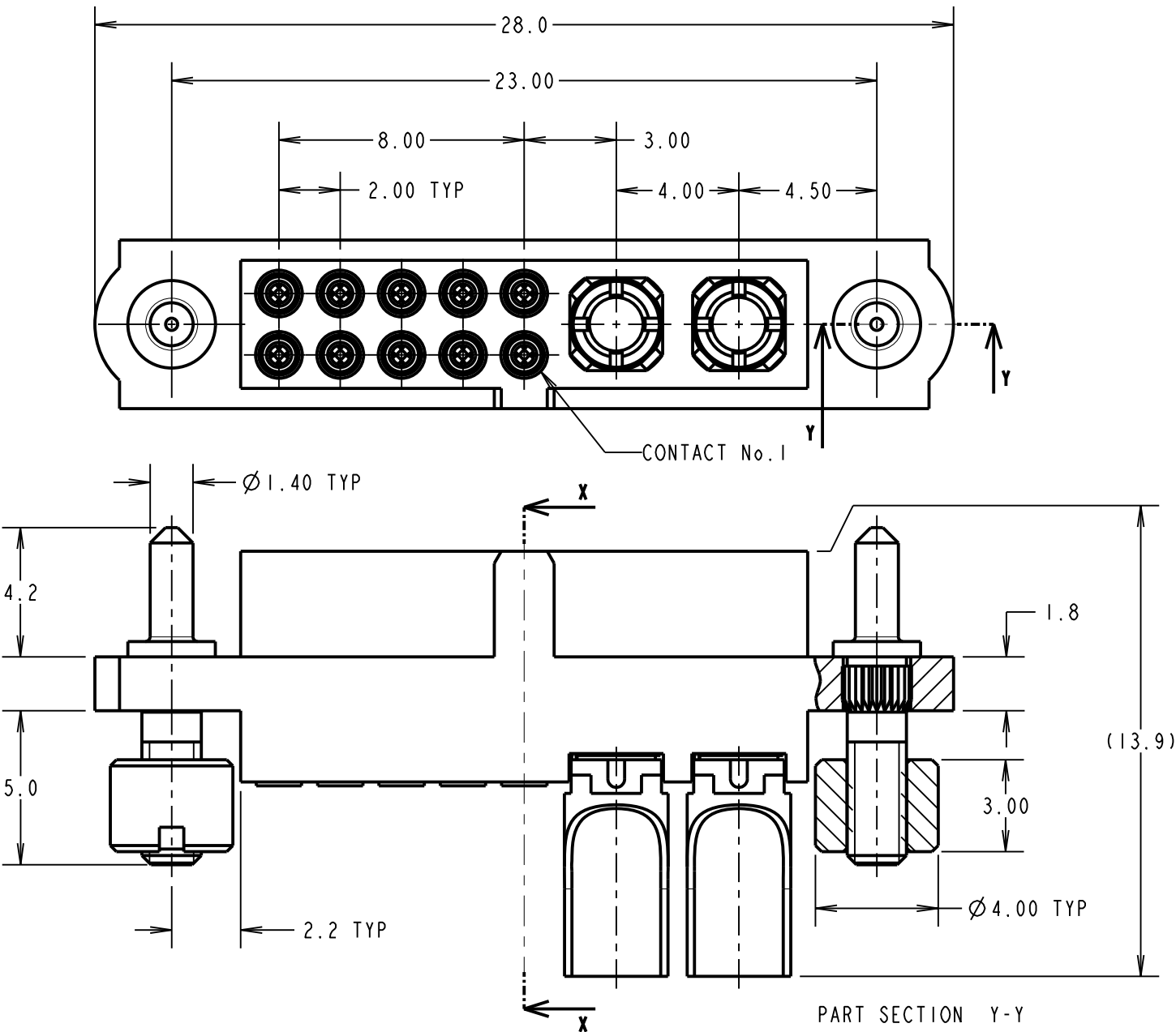
## SPECIFICATIONS:

**MATERIAL:**  
MOULDING: GLASS FILLED PPS, UL94V-0, BLACK  
**SIGNAL CONTACT:**  
CLIP = BERYLIUM COPPER  
SHELL = COPPER ALLOY  
**POWER CONTACT:**  
BODY = COPPER ALLOY  
LATCHING COLLAR = BERYLLIUM COPPER  
BOARD-MOUNT GUIDE, NUT: STAINLESS STEEL  
**FINISH:**  
**SIGNAL CONTACT:**  
CLIP = 0.3 $\mu$  GOLD OVER NICKEL  
SHELL = 0.25-0.3 $\mu$  GOLD OVER NICKEL  
**POWER CONTACT:**  
BODY = GOLD OVER NICKEL  
LATCHING COLLAR = NICKEL  
**ELECTRICAL:**  
WORKING VOLTAGE = 800V AC/DC  
VOLTAGE PROOF = 1200V AC/DC  
INSULATION RESISTANCE = 100M $\Omega$  MIN  
**SIGNAL CONTACT:**  
CURRENT RATING AT 25°C = 3.0A MAX  
CURRENT RATING AT 85°C = 2.2A MAX  
CONTACT RESISTANCE = 25m $\Omega$  MAX  
**POWER CONTACT:**  
CONTACT RESISTANCE = 6m $\Omega$  MAX  
CURRENT RATING = 40A MAX WITH 10AWG  
CONTACT AS SPECIFIED

**MECHANICAL:**  
DURABILITY = 500 OPERATIONS  
**SIGNAL CONTACT:**  
INSERTION FORCE = 2.0N MAX  
WITHDRAWAL FORCE = 0.2N MIN  
**POWER CONTACT:**  
INSERTION FORCE = 15N MAX  
WITHDRAWAL FORCE = 0.5N MIN

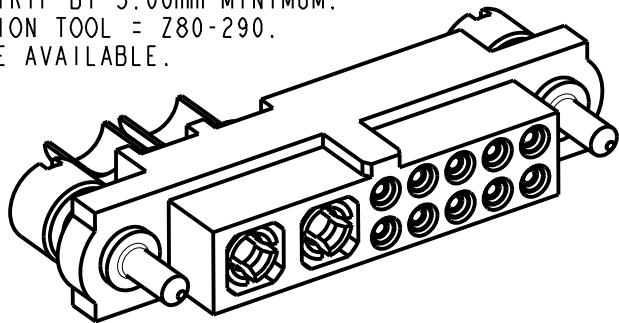
**ENVIRONMENTAL:**  
TEMPERATURE RANGE = -55°C TO +125°C

**PACKING:**  
BAG  
FOR COMPLETE SPECIFICATION SEE COMPONENT  
SPECIFICATION C005XX (LATEST ISSUE)



## NOTES:

- CONNECTORS ARE SUPPLIED WITH CONTACTS LOOSE.
- FOR EXTRA SIGNAL CONTACTS, USE PART NUMBER M80-0130005.
- RECOMMENDED SIGNAL WIRE TYPE = BS 3G 210 TYPE A, PTFE INSULATED 24-28 AWG. MAX INSULATION DIAMETER = Ø1.10mm. STRIP WIRE BY 2.00mm FOR CRIMPING.
- RECOMMENDED HAND CRIMP TOOL FOR SIGNAL CONTACTS = M22520/2-01 WITH POSITIONER T5747. REFER TO TOOLING INSTRUCTION SHEET IS-01 FOR COMPLETE CRIMPING INSTRUCTIONS.
- SIGNAL CONTACT INSERTION AND EXTRACTION TOOL = Z80-280.REFER TO TOOLING INSTRUCTION SHEET IS-25 FOR ASSEMBLY INSTRUCTIONS.
- FOR EXTRA POWER CONTACTS, USE PART NUMBER M80-PF5.
- POWER CONTACT WIRE, STRIP BY 5.00mm MINIMUM.
- POWER CONTACT EXTRACTION TOOL = Z80-290.
- INSTRUCTION SHEETS ARE AVAILABLE.



**HARWIN**

www.harwin.com  
technical@harwin.com

THIS DRAWING AND ANY  
INFORMATION OR DESCRIPTIVE  
MATTER SET OUT HEREON ARE  
CONFIDENTIAL AND COPYRIGHT  
PROPERTY OF THE HARWIN  
GROUP AND MUST NOT BE  
DISCLOSED, LOANED, COPIED  
OR USED FOR MANUFACTURING,  
TENDERING OR FOR ANY  
OTHER PURPOSE WITHOUT  
THEIR WRITTEN PERMISSION.

## TOLERANCES

X. =  $\pm 1$ mm  
X.X =  $\pm 0.50$ mm  
X.XX =  $\pm 0.10$ mm  
X.XXX =  $\pm 0.01$ mm  
ANGLES =  $\pm 5^\circ$   
UNLESS STATED

## MATERIAL:

SEE ABOVE

## FINISH:

SEE ABOVE

## S/AREA:

mm<sup>2</sup>

TITLE: DATAMATE MIX-TEK  
FEMALE ASSEMBLY  
WITH GUIDE PIN

## DRAWING NUMBER:

M80-4C11005F3-02-PF5-00-000

SHT  
2 OF 2

MGP	I	01.04.15	----
NAME	ISS.	DATE	C/NOTE
APPROVED: MGP			
CHECKED: SB			
DRAWN: M.G.PLESTED			
CUSTOMER REF.:			
ASSEMBLY DRG:			