

# Customer Information Sheet

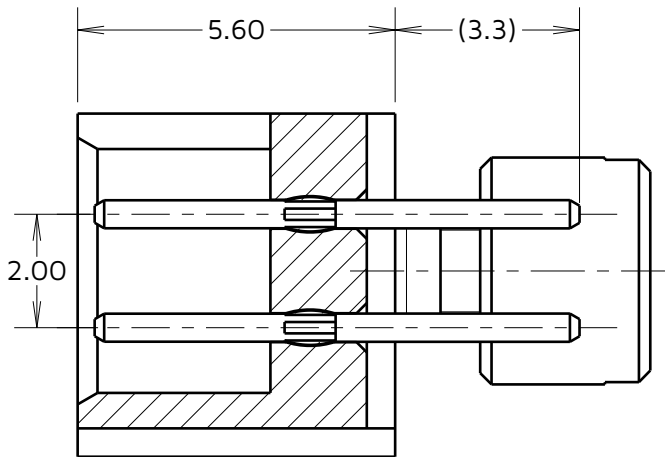
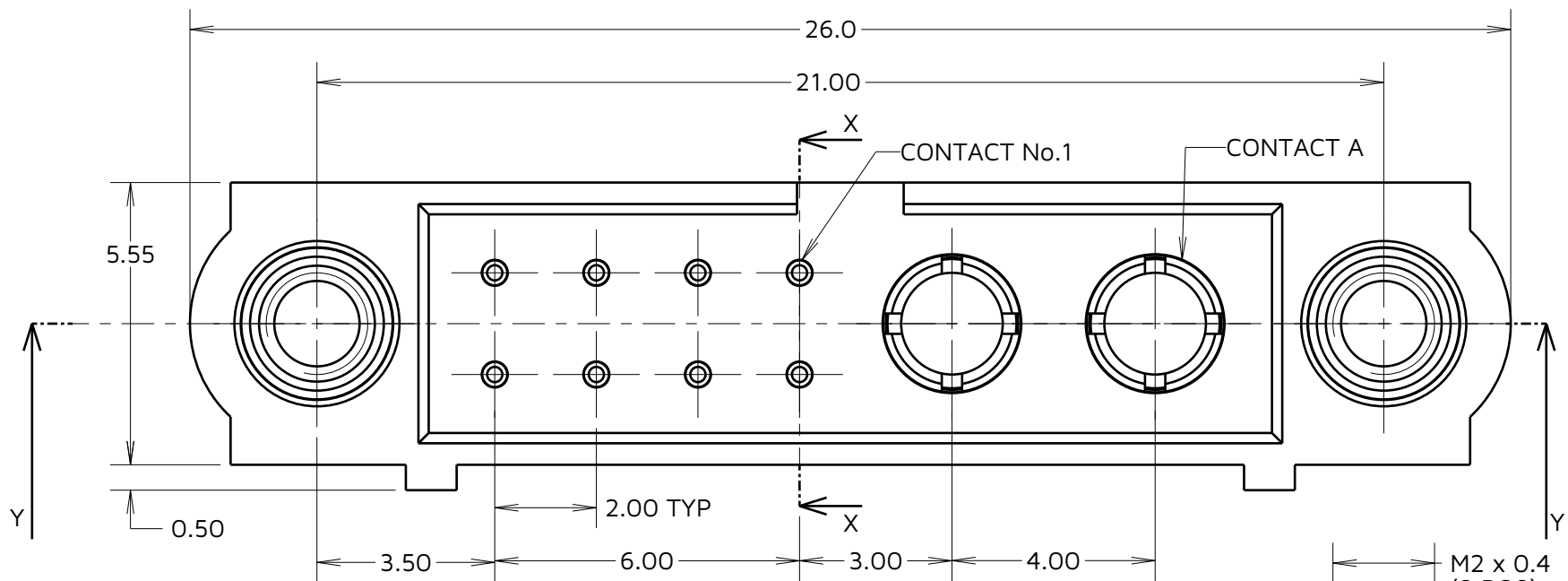
IF IN DOUBT - ASK

©

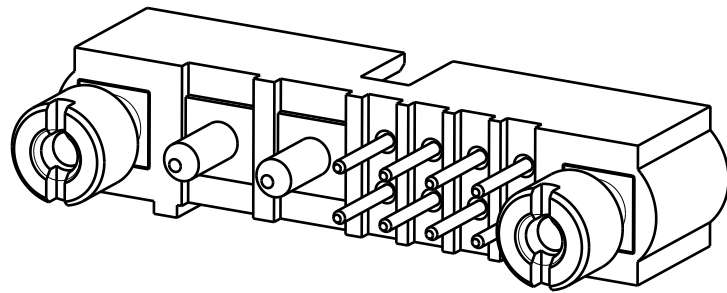
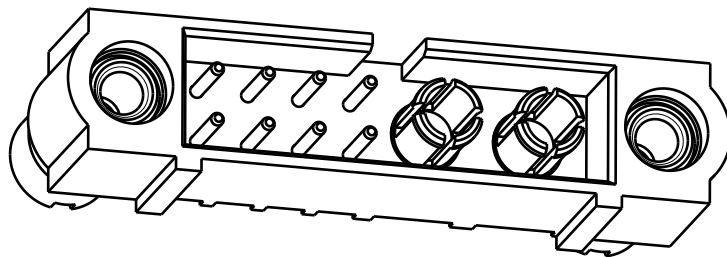
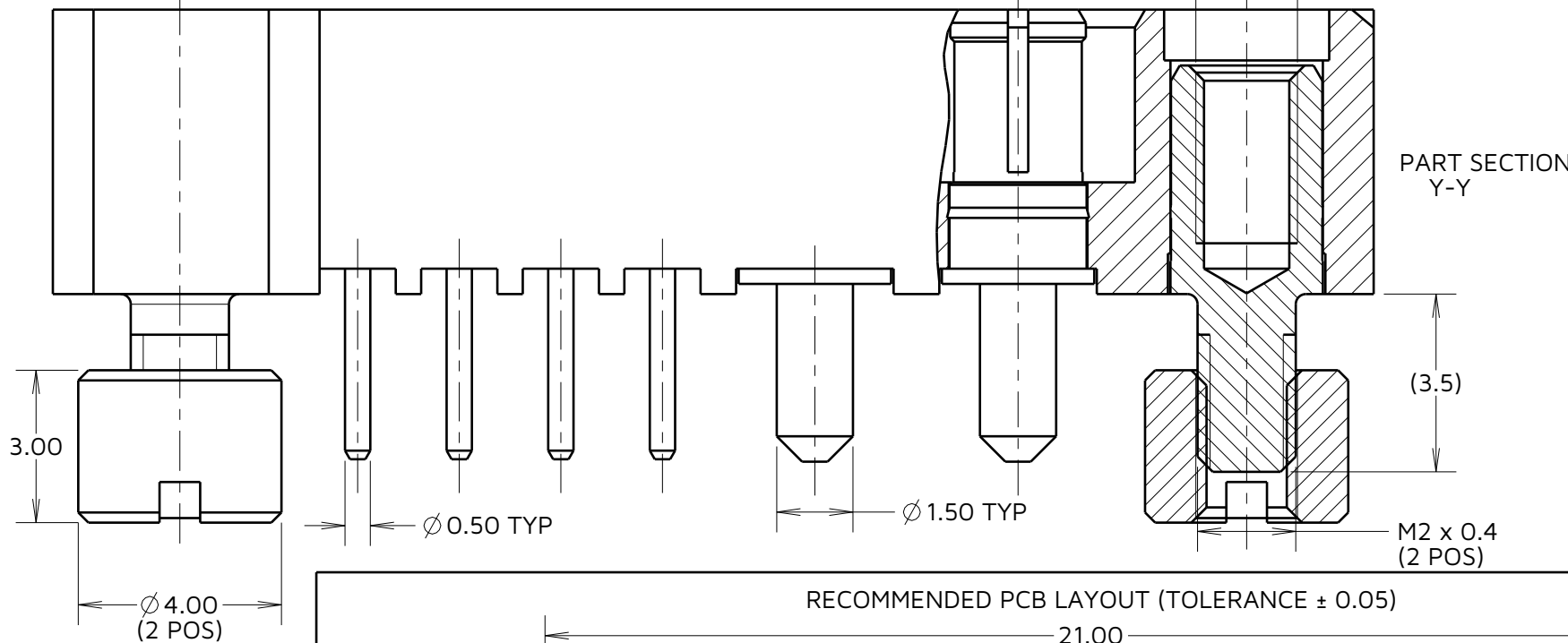
NOT TO SCALE

THIRD ANGLE PROJECTION

ALL DIMENSIONS IN mm



SECTION X-X

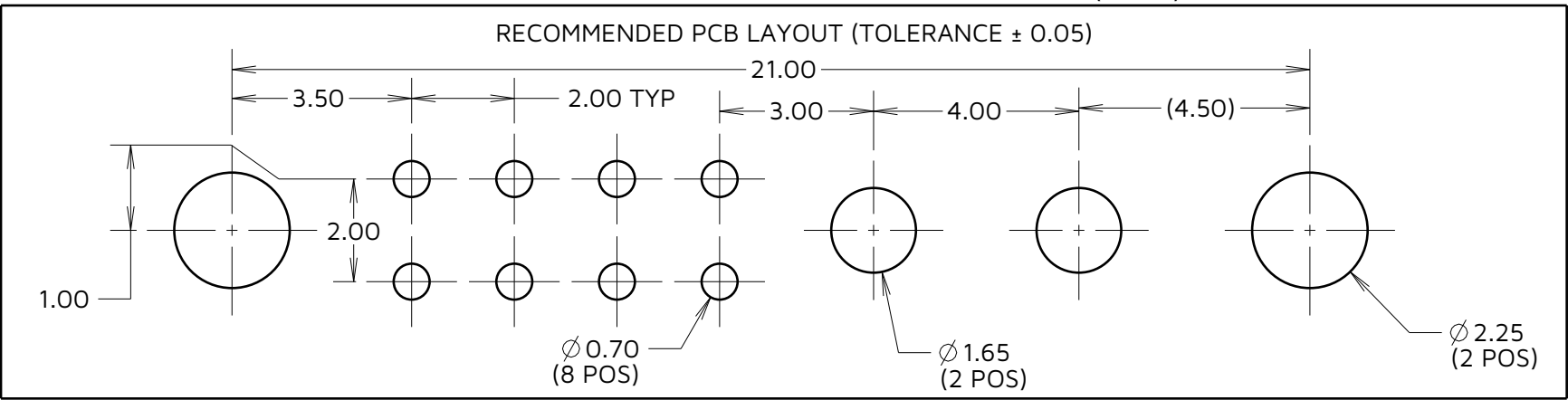


COMPLETE ASSEMBLY SHOWN  
FOR ILLUSTRATION ONLY

## SPECIFICATIONS:

**MATERIAL:**  
HOUSING: GLASS FILLED PPS, UL94V-0, BLACK  
SIGNAL CONTACT: PHOSPHOR BRONZE  
POWER CONTACT: COPPER ALLOY  
JACKSCREW: STAINLESS STEEL  
**FINISH:**  
SIGNAL CONTACT:  
GOLD ON CONTACT AREA,  
90/10 TIN/LEAD ON TAILS  
POWER CONTACT: GOLD  
**PACKING:**  
TUBE  
FOR COMPLETE SPECIFICATION SEE COMPONENT  
SPECIFICATION C005XX (LATEST ISSUE)

**NOTE:**  
1. CONNECTORS ARE SUPPLIED WITH  
NUTS LOOSE.



**HARWIN**

www.harwin.com

**TOLERANCES**  
X. = ±1mm  
X.X = ±0.50mm  
X.XX = ±0.20mm  
X.XXX = ±0.01mm  
ANGLES = ±5°  
UNLESS STATED

THIS DRAWING AND ANY  
INFORMATION OR DESCRIPTIVE  
MATTER SET OUT HEREON ARE  
CONFIDENTIAL AND COPYRIGHT  
PROPERTY OF THE HARWIN GROUP  
AND MUST NOT BE DISCLOSED,  
LOANED, COPIED OR USED FOR  
MANUFACTURING, TENDERING OR FOR  
ANY OTHER PURPOSE WITHOUT THEIR  
WRITTEN PERMISSION.

**MATERIAL:**  
  
SEE ABOVE

**TITLE:** JACKSCREW DATAMATE  
MIXED TECHNOLOGY  
PC TAIL MALE ASSEMBLY

**DRAWING NUMBER:**  
M80-5T10822M2-02-331-00-000

SHT  
2  
OF  
2

AY	3	07.10.24	34916
NAME	ISS.	DATE	CN/CO
APPROVED: A. YEOMANS			
CHECKED: A. BOXALL			
DRAWN: R.ADDE			