

Customer Information Sheet

IF IN DOUBT - ASK

©

NOT TO SCALE

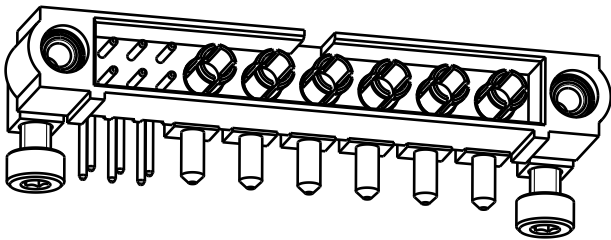
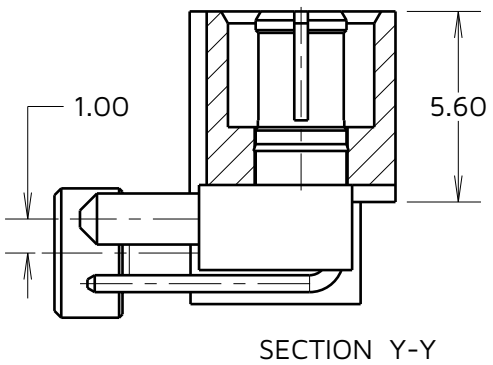
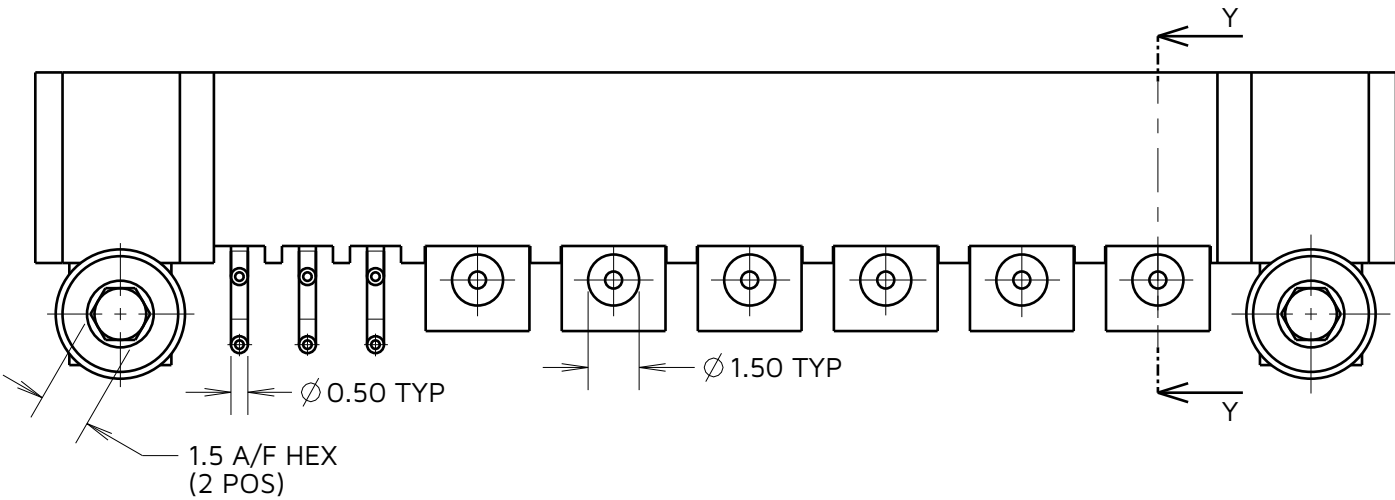
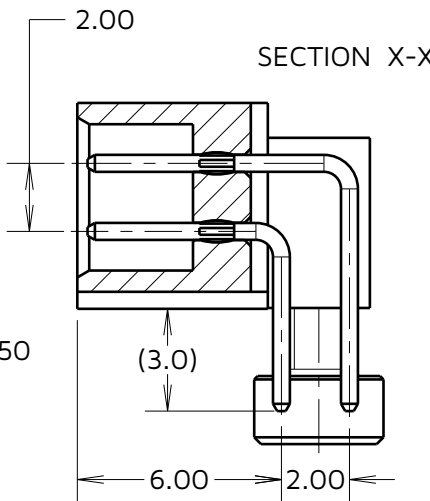
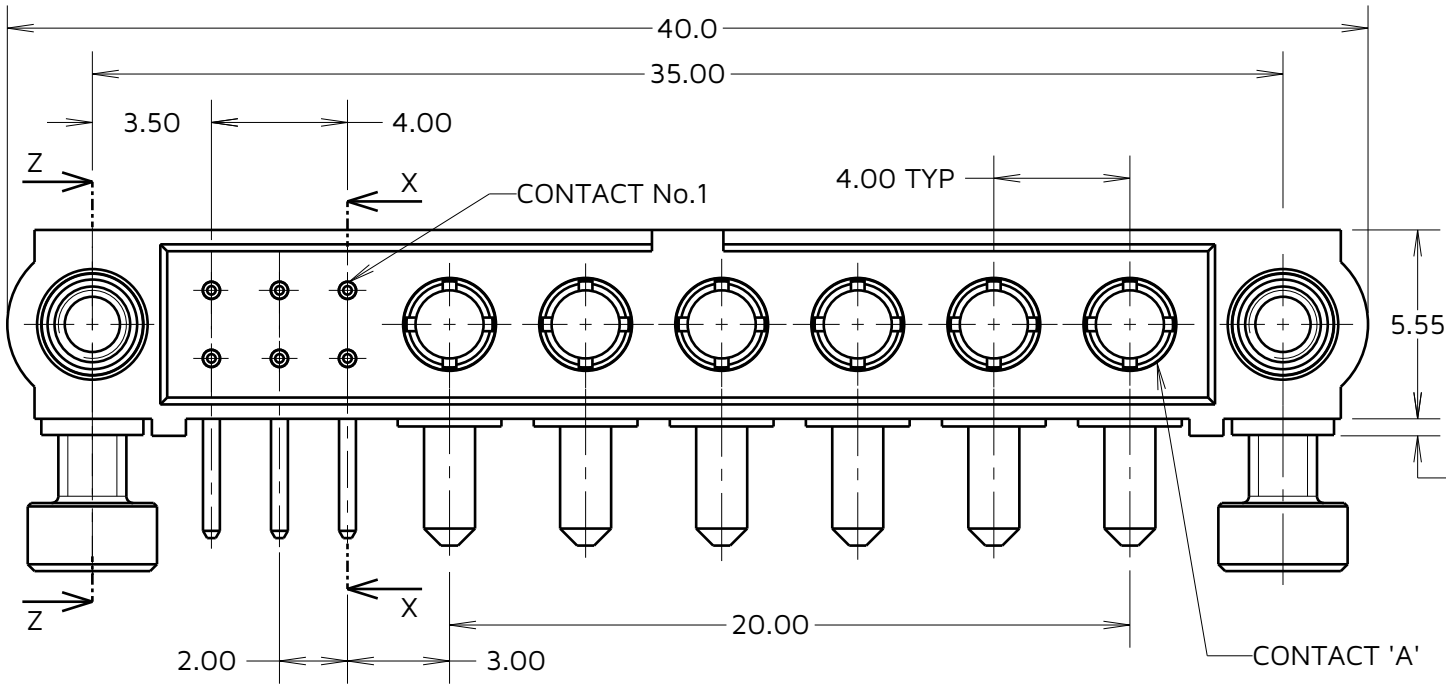
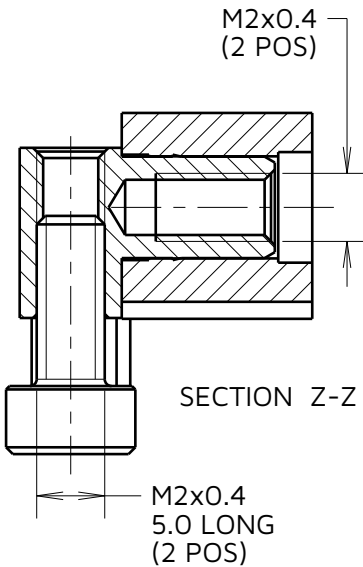
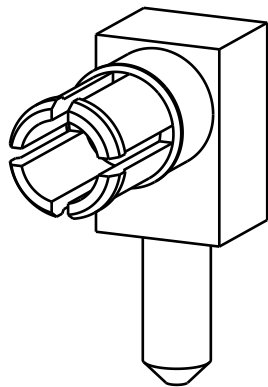
THIRD ANGLE PROJECTION

ALL DIMENSIONS IN mm

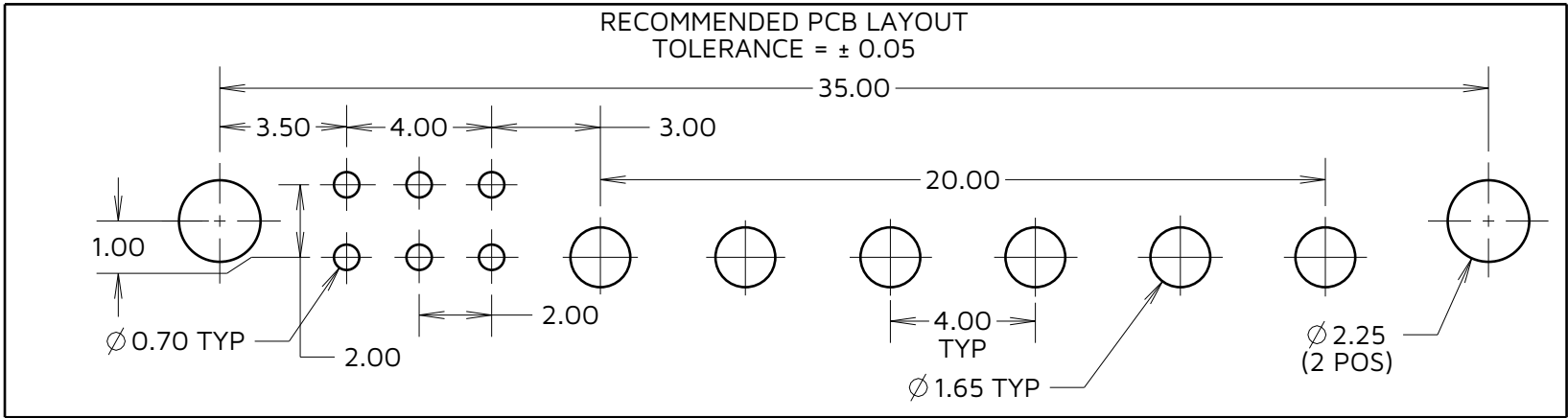
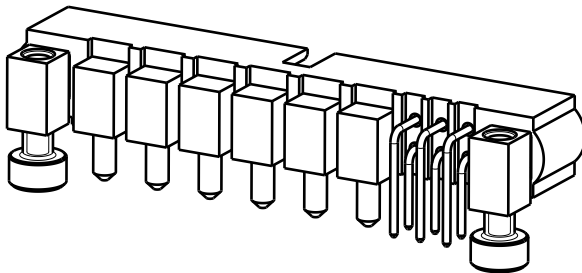
SPECIFICATIONS:

MATERIAL:
HOUSING: GLASS FILLED PPS, UL94V-0, BLACK
SIGNAL CONTACT: PHOSPHOR BRONZE
POWER CONTACT: COPPER ALLOY
BOARD-MOUNT JACKSCREW, SCREW: STAINLESS STEEL
FINISH:
SIGNAL CONTACT:
ALL OVER GOLD
POWER CONTACT: GOLD
PACKING:
TUBE
FOR COMPLETE SPECIFICATION SEE COMPONENT
SPECIFICATION C005XX (LATEST ISSUE)

VIEW OF
POWER CONTACT



COMPLETE ASSEMBLY SHOWN
FOR ILLUSTRATION ONLY



NOTES:
1. SCREWS ARE SUPPLIED LOOSE IN A BAG, NOT ASSEMBLED AS SHOWN

HARWIN

www.harwin.com

TOLERANCES
X. = $\pm 1\text{mm}$
X.X = $\pm 0.50\text{mm}$
X.XX = $\pm 0.20\text{mm}$
X.XXX = $\pm 0.01\text{mm}$
ANGLES = $\pm 5^\circ$
UNLESS STATED

THIS DRAWING AND ANY
INFORMATION OR DESCRIPTIVE
MATTER SET OUT HEREON ARE
CONFIDENTIAL AND COPYRIGHT
PROPERTY OF THE HARWIN GROUP
AND MUST NOT BE DISCLOSED,
LOANED, COPIED OR USED FOR
MANUFACTURING, TENDERING OR FOR
ANY OTHER PURPOSE WITHOUT THEIR
WRITTEN PERMISSION.

MATERIAL & FINISH:

SEE ABOVE

TITLE: JACKSCREW DATAMATE
MIXED TECHNOLOGY VERTICAL
PC TAIL MALE ASSEMBLY

DRAWING NUMBER:
M80-5L10605M7-06-333-00-000

SHT
2
OF
2

| | | | |
|-----------|------|--------------|-------|
| MJ | 3 | 08.11.24 | 34803 |
| NAME | ISS. | DATE | CN/CO |
| APPROVED: | | M. JELLEY | |
| CHECKED: | | R. ALEXANDER | |
| DRAWN: | | C.PENROSE | |