

# Customer Information Sheet

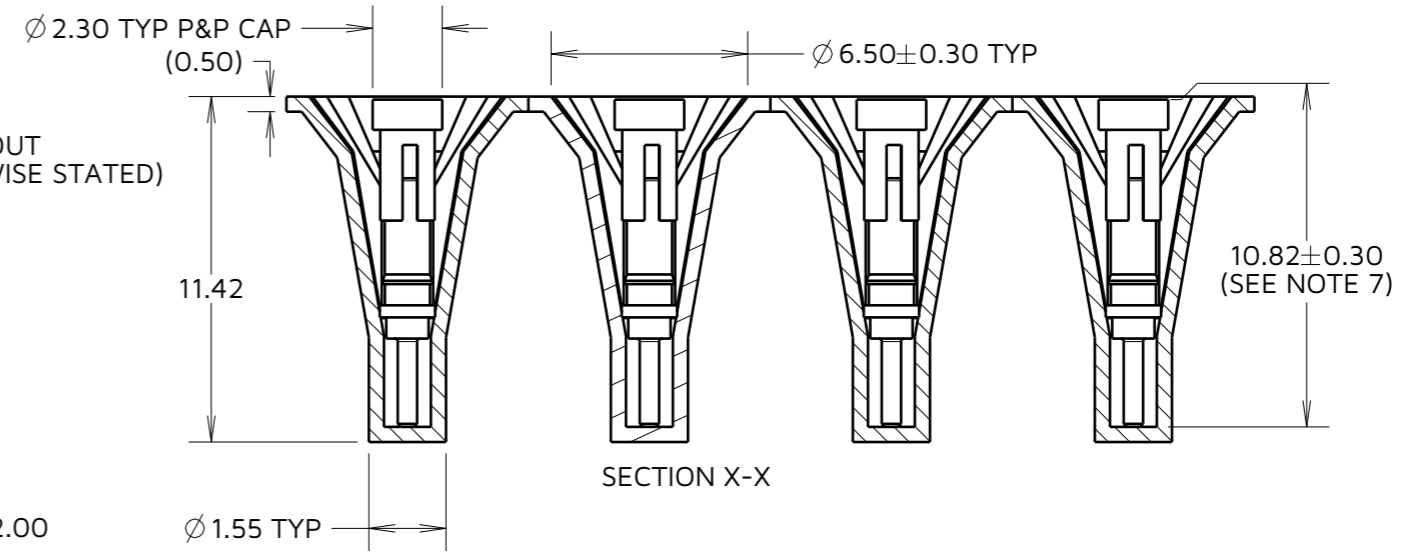
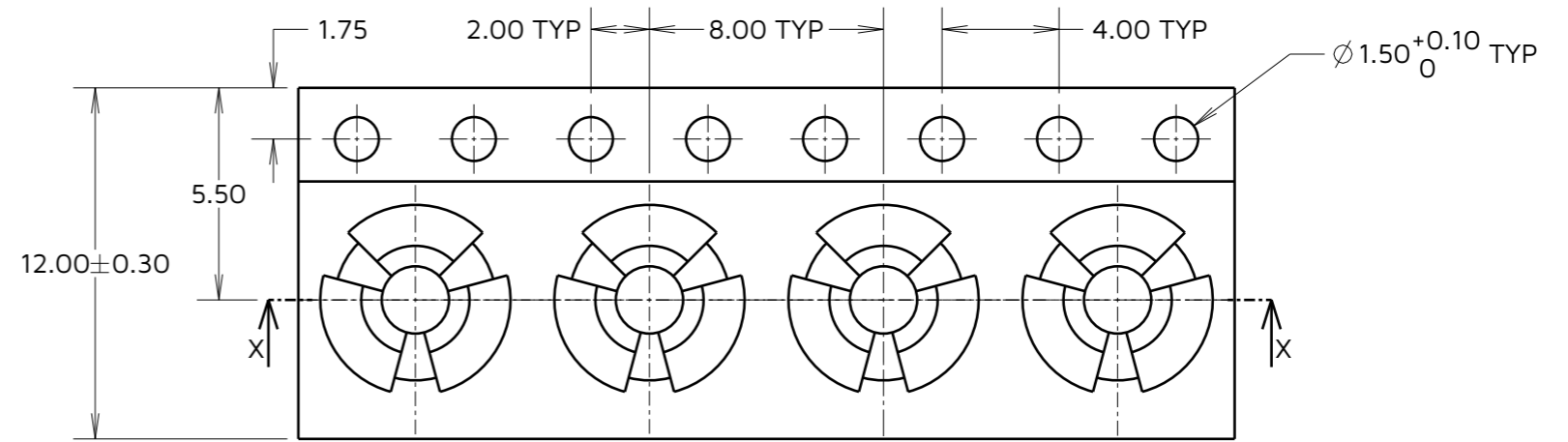
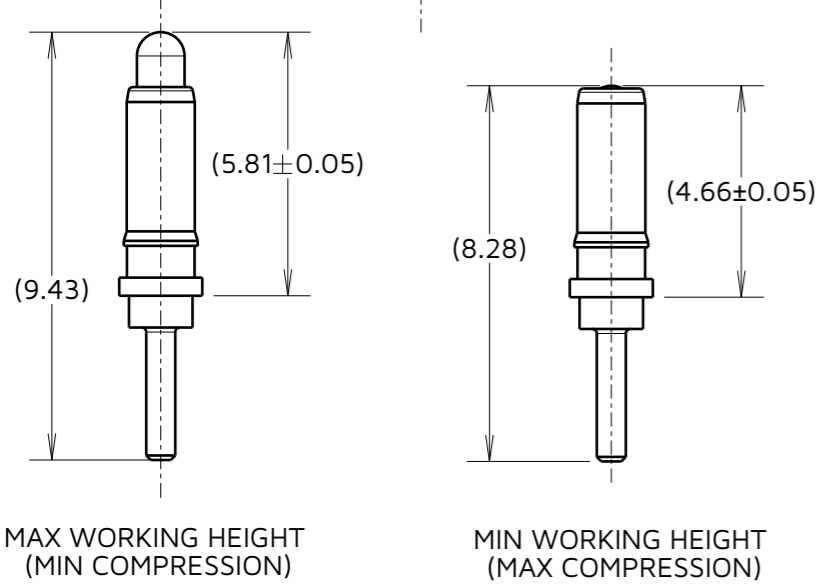
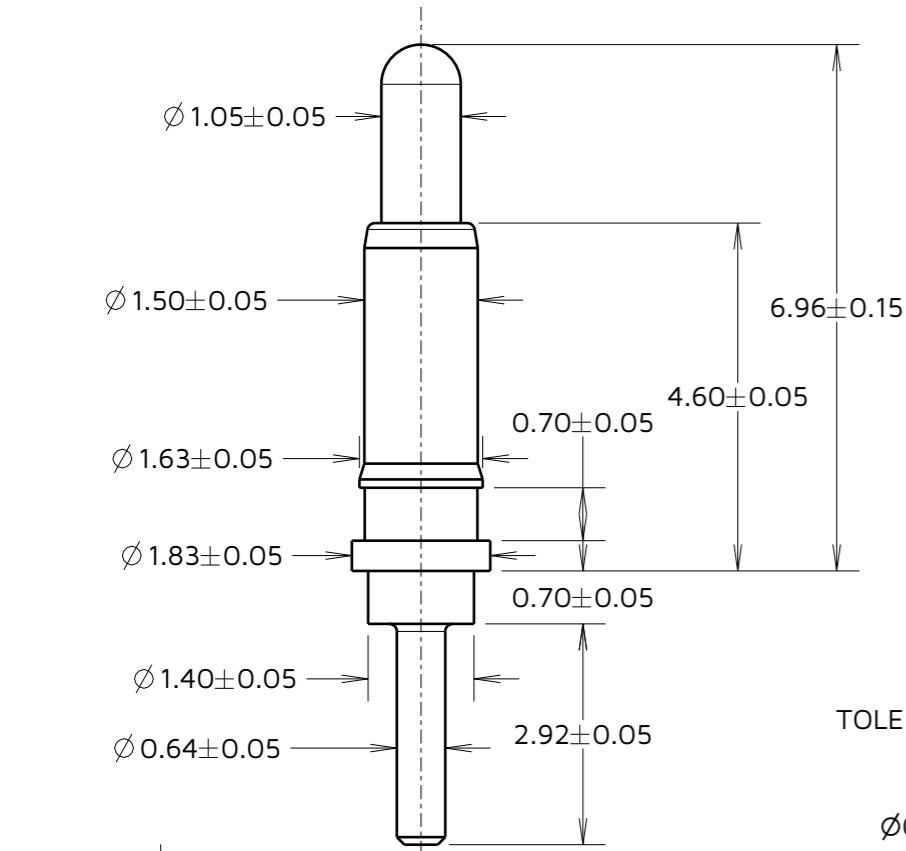
IF IN DOUBT - ASK

©

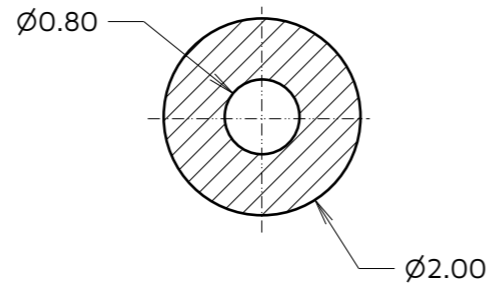
NOT TO SCALE

THIRD ANGLE PROJECTION

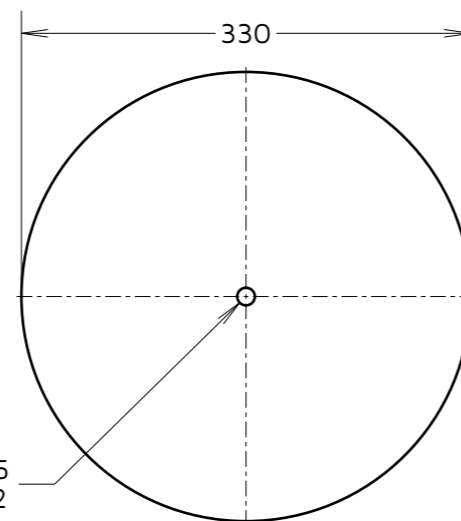
ALL DIMENSIONS IN mm



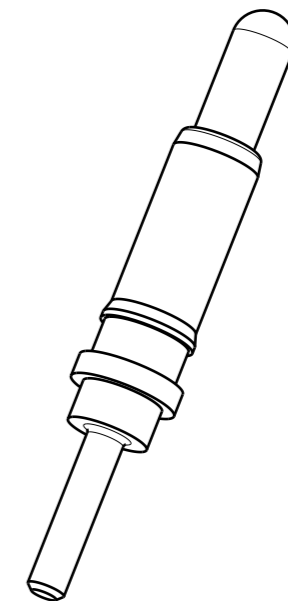
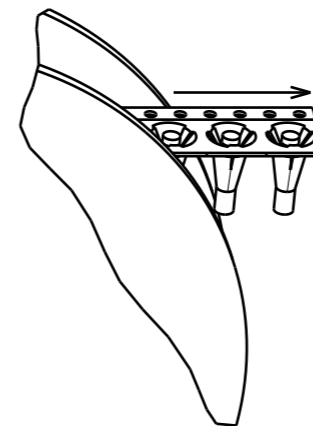
RECOMMENDED PCB LAYOUT TOLERANCE  $\pm 0.05$  (UNLESS OTHERWISE STATED)



REEL DETAILS



FINISHED REELING DIRECTION.



NOTES:

- MATERIAL.  
 BARREL & PLUNGER: COPPER ALLOY  
 SPRING: STAINLESS STEEL  
 TAPE: TRANSPARENT PET  
 P&P CAP: PA9T
- PLATING.  
 PLUNGER: GOLD OVER NICKEL  
 BARREL :GOLD OVER NICKEL
- TAPE MATERIAL: PET TRANSPARENT
- QUANTITY OF COMPONENT PER REEL : 700 PCS .
- THIS PRODUCT IS TAPED AND REELED IN ACCORDANCE WITH EIA-481 STANDARDS.
- FOR COMPLETE ELECTRICAL AND MECHANICAL SPECIFICATION SEE COMPONENT SPECIFICATION C056XX (LATEST ISSUE)
- DIM ILLUSTRATES THE TOTAL COMPONENT HEIGHT EXCLUDING LOCATION PEG (PICK AND PLACE CAP INCLUDED.)

FC	1	23.04.24	33949
NAME	ISS.	DATE	CN/CO
APPROVED: R.PORTLOCK			
CHECKED: A.YEOMANS			
DRAWN: F.CHRISPINE			
ASSEMBLY DRG:			

**HARWIN**

www.harwin.com

TOLERANCES  
 X. =  $\pm 1$ mm  
 X.X =  $\pm 0.50$ mm  
 X.XX =  $\pm 0.20$ mm  
 X.XXX =  $\pm 0.01$ mm  
 ANGLES =  $\pm 5^\circ$   
 UNLESS STATED

THIS DRAWING AND ANY INFORMATION OR DESCRIPTIVE MATTER SET OUT HEREON ARE CONFIDENTIAL AND COPYRIGHT PROPERTY OF THE HARWIN GROUP AND MUST NOT BE DISCLOSED, LOANED, COPIED OR USED FOR MANUFACTURING, TENDERING OR FOR ANY OTHER PURPOSE WITHOUT THEIR WRITTEN PERMISSION.

MATERIAL:  
 SEE NOTE 1

TITLE:  
**THROUGH HOLE SPRING LOADED POGO PIN**

DRAWING NUMBER:  
**P70-2700045R**

SHT  
 2 OF 2