

Customer Information Sheet

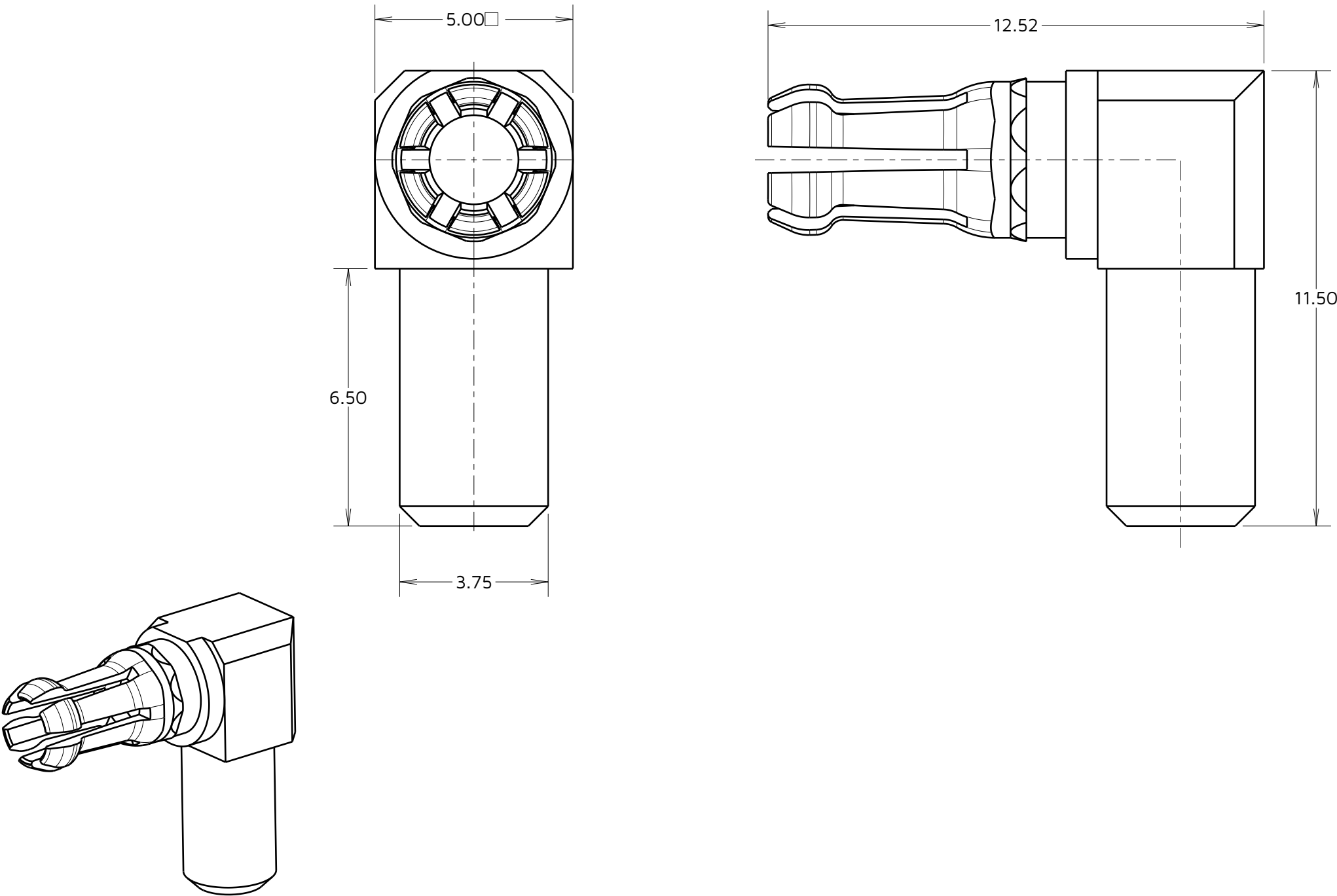
IF IN DOUBT - ASK

©

NOT TO SCALE

THIRD ANGLE PROJECTION

ALL DIMENSIONS IN mm



- NOTES:
1. RECOMMENDED PCB HOLE SIZE = $\phi 4.00 \pm 0.05$ mm. SEE CONNECTOR ASSEMBLY DRAWINGS FOR RECOMMENDED PCB LAYOUT.
 2. FOR FULL SPECIFICATION SEE COMPONENT SPECIFICATION C052XX (LATEST ISSUE).
 3. FINISH: GOLD OVER NICKEL.
 4. PACKING: BAGS.

HARWIN

www.harwin.com

TOLERANCES
X. = ± 1 mm
X.X = ± 0.50 mm
X.XX = ± 0.20 mm
X.XXX = ± 0.01 mm
ANGLES = $\pm 5^\circ$
UNLESS STATED

THIS DRAWING AND ANY INFORMATION OR DESCRIPTIVE MATTER SET OUT HEREON ARE CONFIDENTIAL AND COPYRIGHT PROPERTY OF THE HARWIN GROUP AND MUST NOT BE DISCLOSED, LOANED, COPIED OR USED FOR MANUFACTURING, TENDERING OR FOR ANY OTHER PURPOSE WITHOUT THEIR WRITTEN PERMISSION.

MATERIAL & FINISH:

SEE NOTE 2

TITLE:
KA1 SERIES MALE
HORIZONTAL CONTACT PCT

DRAWING NUMBER:
KA1-1150005

SHT
3
OF
3

RTP	3	12.03.25	35842
NAME	ISS.	DATE	CN/CO
APPROVED: R.PORTLOCK			
CHECKED: R.ALEXANDER			
DRAWN: M.RUDKIN			