

# Customer Information Sheet

IF IN DOUBT - ASK

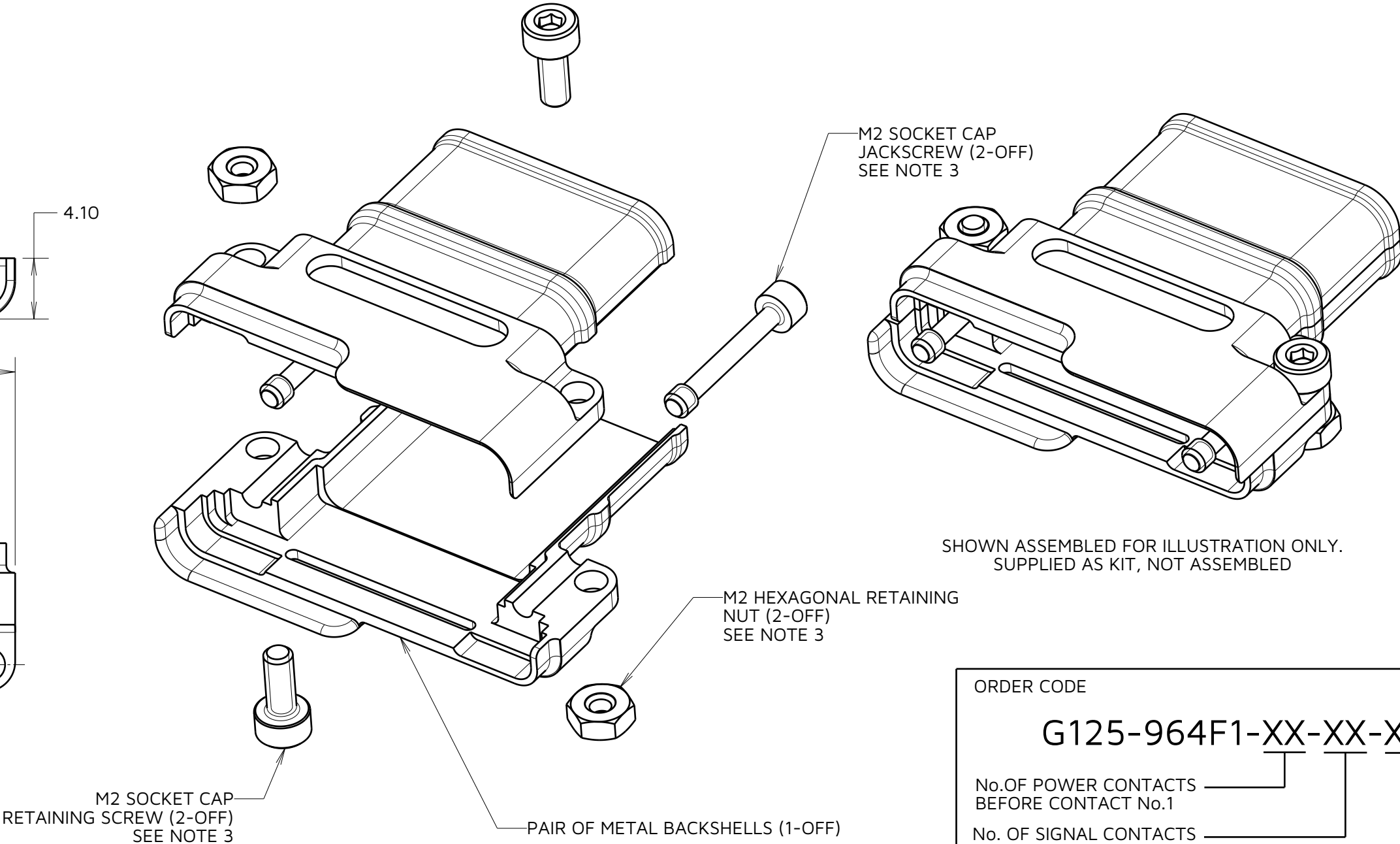
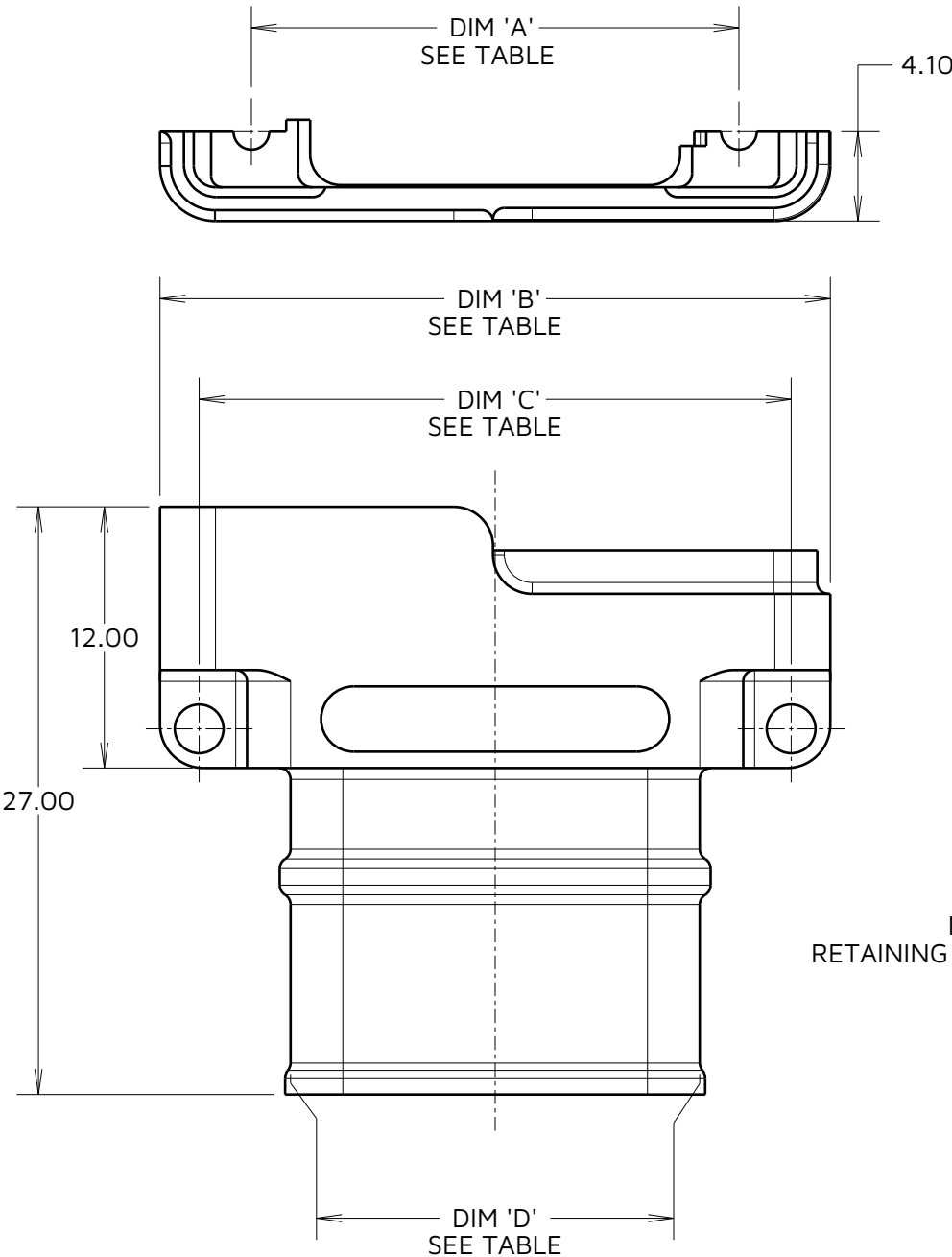
©

NOT TO SCALE

THIRD ANGLE PROJECTION

ALL DIMENSIONS IN mm

SPECIFICATION:  
MATERIAL:  
BACKSHELL = ALUMINIUM  
SCREWS = STAINLESS STEEL  
FINISH:  
BACKSHELL = NICKEL  
PACKING:  
KITTED INDIVIDUALLY IN BAGS  
SEE COMPONENT SPECIFICATION C125  
(LATEST ISSUE) FOR FULL SPECIFICATION



ORDER CODE

**G125-964F1-XX-XX-XX**

No.OF POWER CONTACTS BEFORE CONTACT No.1

No. OF SIGNAL CONTACTS

No. OF POWER CONTACTS AFTER CONTACT No.1

- NOTES:
- SUPPLIED AS A KIT OF PARTS TO BE ASSEMBLED TO G125-2249600-XX-XX-XX OR G125-3249600-XX-XX-XX SERIES OF CONNECTORS.
  - FOR BAND-IT TIE, ORDER M80-9470000 OR M80-9480000 SEPERATELY. SEE INDIVIDUAL DRAWINGS FOR DETAILS.
  - FOR SPARES, ORDER SEPARATELY PART NUMBERS:  
G125-4520000 - M2 SOCKET CAP RETAINING SCREW  
G125-4500000 - M2 HEXAGONAL RETAINING NUT  
G125-4440000 - M2 SOCKET CAP JACKSCREW

PART NUMBER	DIM 'A'	DIM 'B'	DIM 'C'	DIM 'D'
G125-964F1-02-04-00	16.15	24.55	20.95	12.55
G125-964F1-03-08-00	22.40	30.80	27.20	18.80
G125-964F1-04-04-00	23.65	32.05	28.45	20.05
G125-964F1-02-24-00	28.65	37.05	33.45	25.05
G125-964F1-04-16-00	31.15	39.55	35.95	27.55
G125-964F1-06-08-00	33.65	42.05	38.45	30.05

**HARWIN**

www.harwin.com

TOLERANCES  
X. = ±1mm  
X.X = ±0.50mm  
X.XX = ±0.20mm  
X.XXX = ±0.01mm  
ANGLES = ±5°  
UNLESS STATED

THIS DRAWING AND ANY INFORMATION OR DESCRIPTIVE MATTER SET OUT HEREON ARE CONFIDENTIAL AND COPYRIGHT PROPERTY OF THE HARWIN GROUP AND MUST NOT BE DISCLOSED, LOANED, COPIED OR USED FOR MANUFACTURING, TENDERING OR FOR ANY OTHER PURPOSE WITHOUT THEIR WRITTEN PERMISSION.

MATERIAL:  
  
SEE ABOVE

TITLE:  
**GECKO-MT  
CABLE BACKSHELL KIT**

DRAWING NUMBER:  
**G125-964F1-XX-XX-XX**

SHT  
2  
OF  
2

AB	1	24.09.24	34740
NAME	ISS.	DATE	CN/CO
APPROVED:	R.PORTLOCK		
CHECKED:	R.ALEXANDER		
DRAWN:	A.BOXALL		