

Customer Information Sheet

IF IN DOUBT - ASK

©

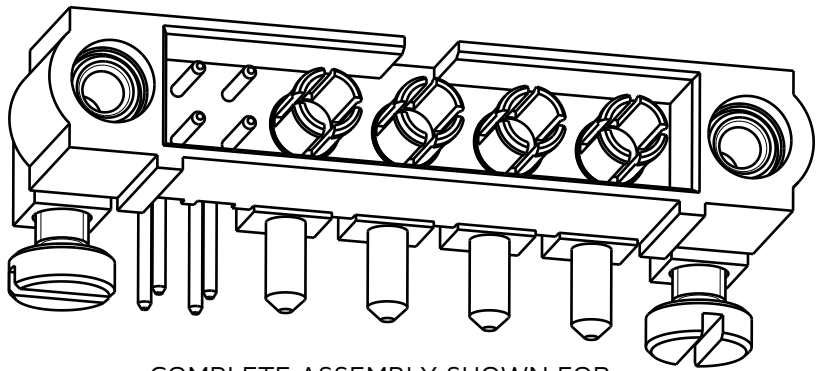
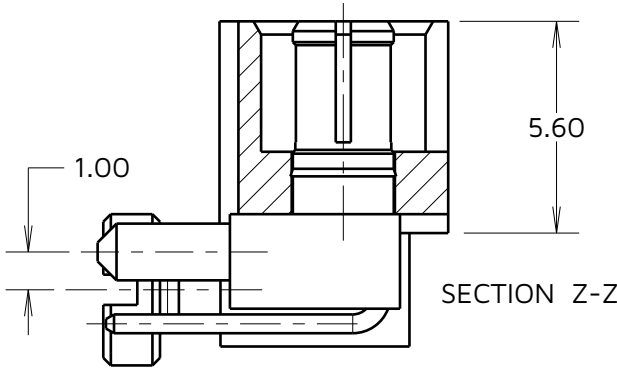
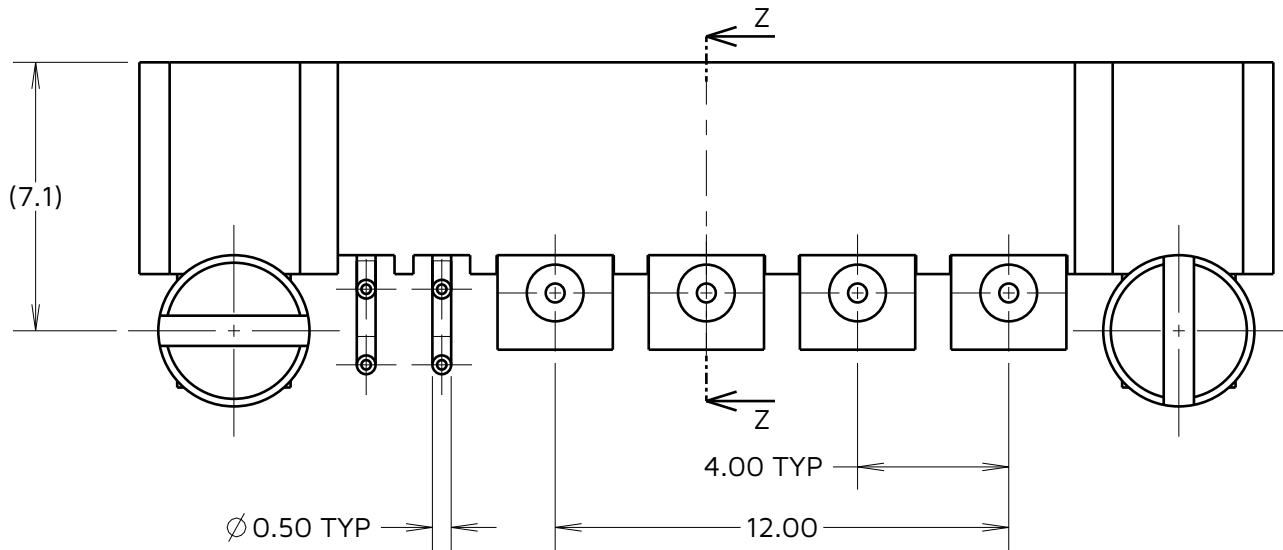
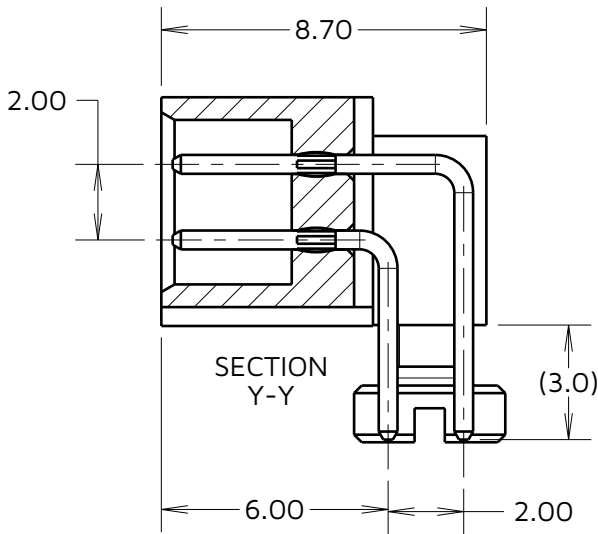
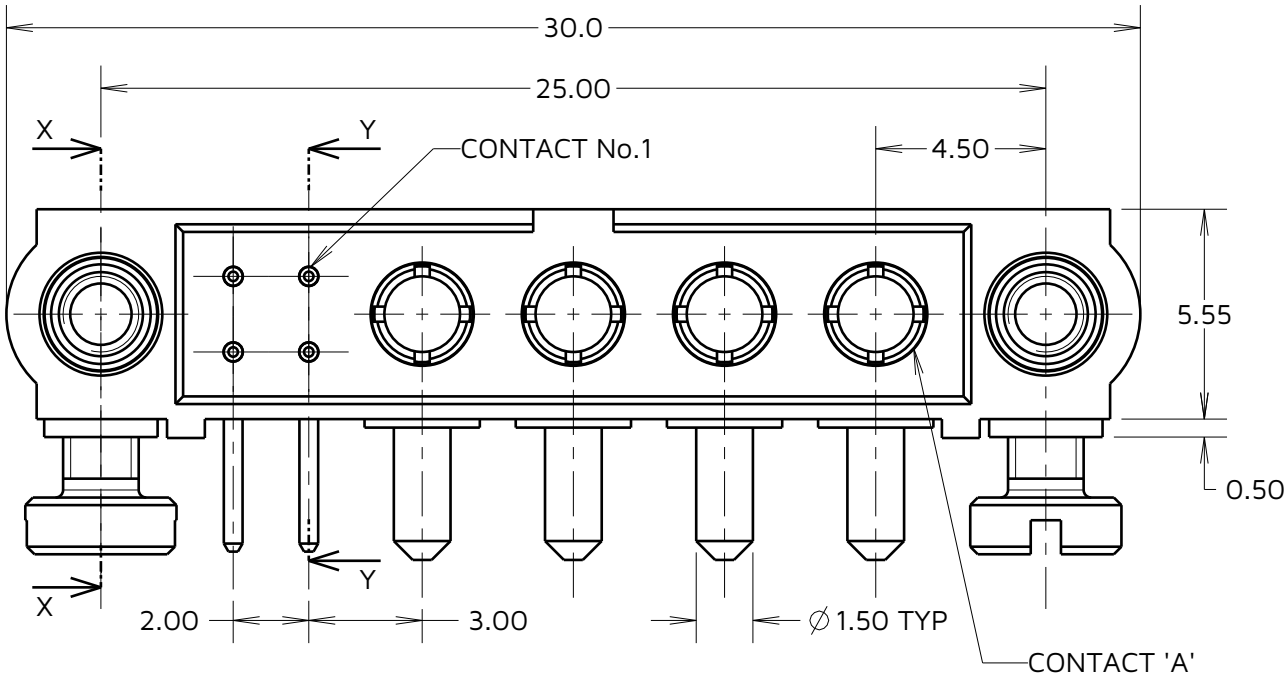
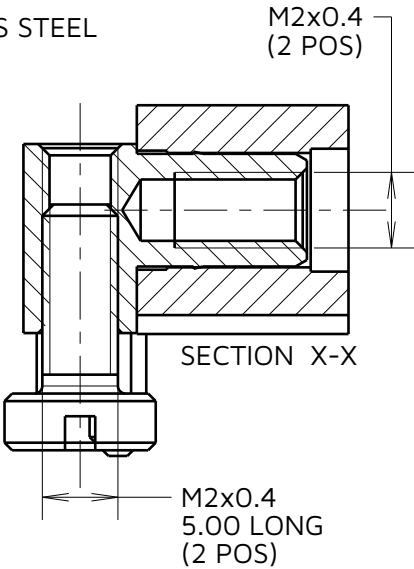
NOT TO SCALE

THIRD ANGLE PROJECTION

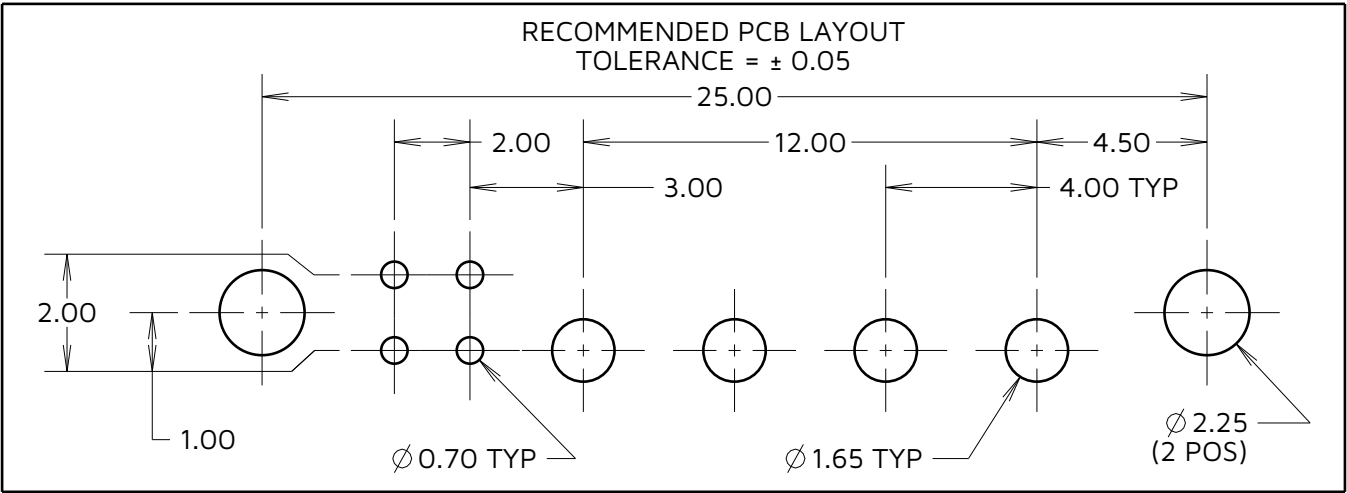
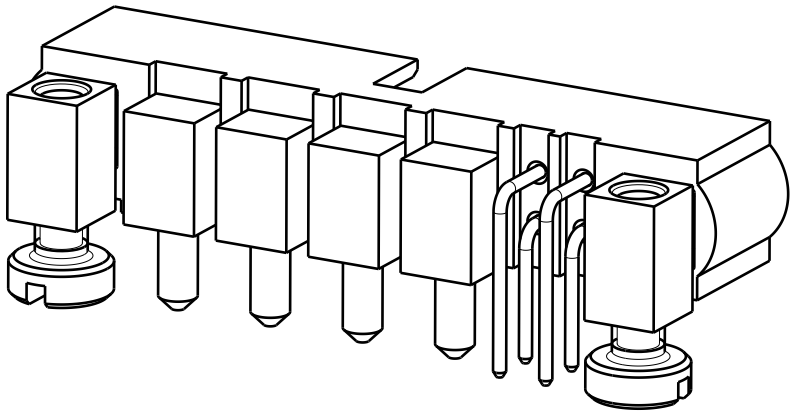
ALL DIMENSIONS IN mm

SPECIFICATIONS:

MATERIAL:
HOUSING: GLASS FILLED PPS, UL94V-0, BLACK
SIGNAL CONTACT: PHOSPHOR BRONZE
POWER CONTACT: COPPER ALLOY
BOARD-MOUNT JACKSCREW, SCREW: STAINLESS STEEL
FINISH:
SIGNAL CONTACT:
GOLD
POWER CONTACT: GOLD
PACKING:
TUBE
FOR COMPLETE SPECIFICATION SEE COMPONENT
SPECIFICATION C005XX (LATEST ISSUE)



COMPLETE ASSEMBLY SHOWN FOR
ILLUSTRATION PURPOSES ONLY



NOTES
1. SCREWS ARE SUPPLIED LOOSE IN A BAG, NOT ASSEMBLED AS SHOWN

HARWIN

www.harwin.com

TOLERANCES
X. = $\pm 1\text{mm}$
X.X = $\pm 0.50\text{mm}$
X.XX = $\pm 0.20\text{mm}$
X.XXX = $\pm 0.01\text{mm}$
ANGLES = $\pm 5^\circ$
UNLESS STATED

THIS DRAWING AND ANY
INFORMATION OR DESCRIPTIVE
MATTER SET OUT HEREON ARE
CONFIDENTIAL AND COPYRIGHT
PROPERTY OF THE HARWIN GROUP
AND MUST NOT BE DISCLOSED,
LOANED, COPIED OR USED FOR
MANUFACTURING, TENDERING OR FOR
ANY OTHER PURPOSE WITHOUT THEIR
WRITTEN PERMISSION.

MATERIAL & FINISH:

SEE ABOVE

TITLE: DATAMATE MIX-TEK
MALE ASSY WITH HORIZONTAL
BOARDMOUNT J/SCREW

DRAWING NUMBER:
M80-5L10405M5-04-333-00-000

SHT
2
OF
2

| | | | |
|-----------------------|------|----------|-------|
| MJ | 4 | 08.11.24 | 34803 |
| NAME | ISS. | DATE | CN/CO |
| APPROVED: M. JELLEY | | | |
| CHECKED: R. ALEXANDER | | | |
| DRAWN: M.PLESTED | | | |