

# Customer Information Sheet

DRAWING No.: M80-4T10605F3-02-PF1-02-PF1

IF IN DOUBT - ASK

©

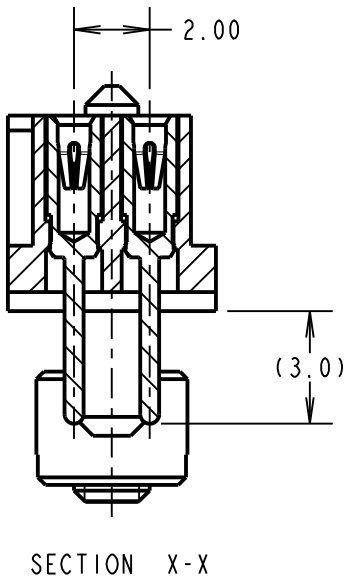
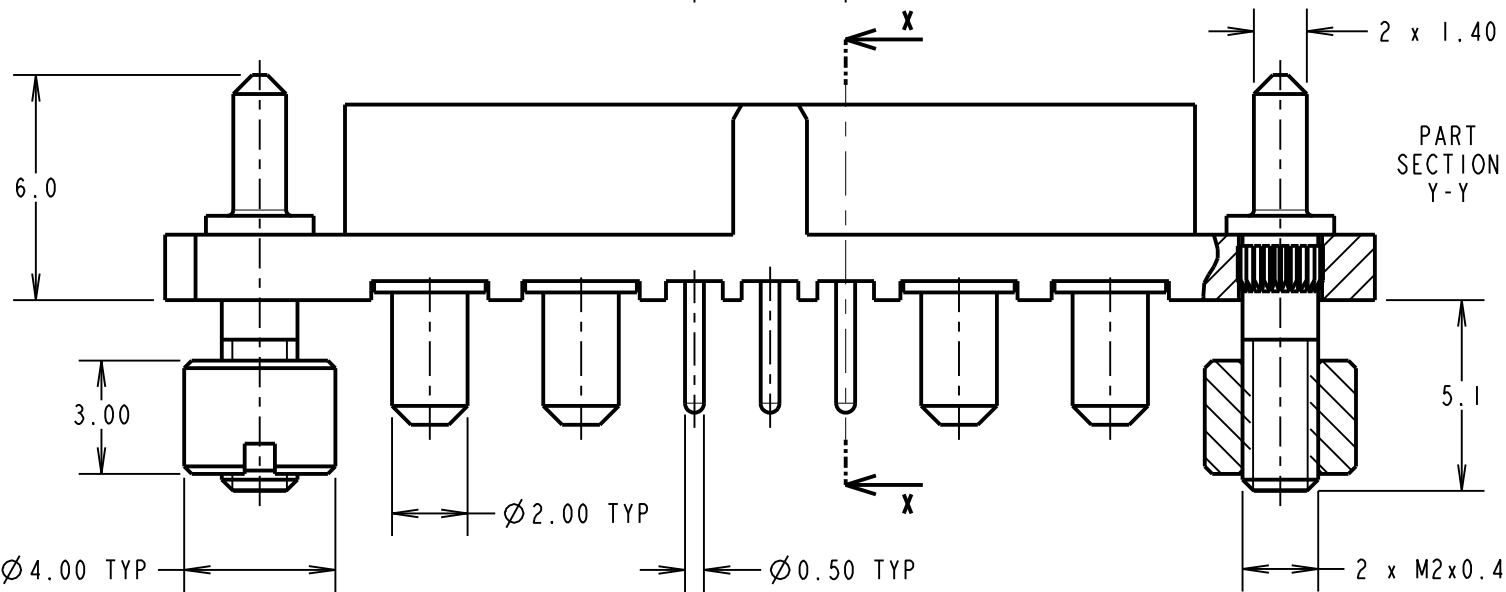
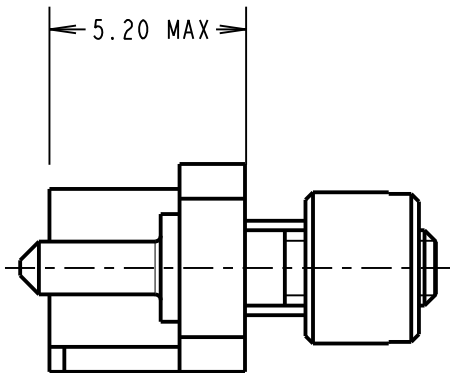
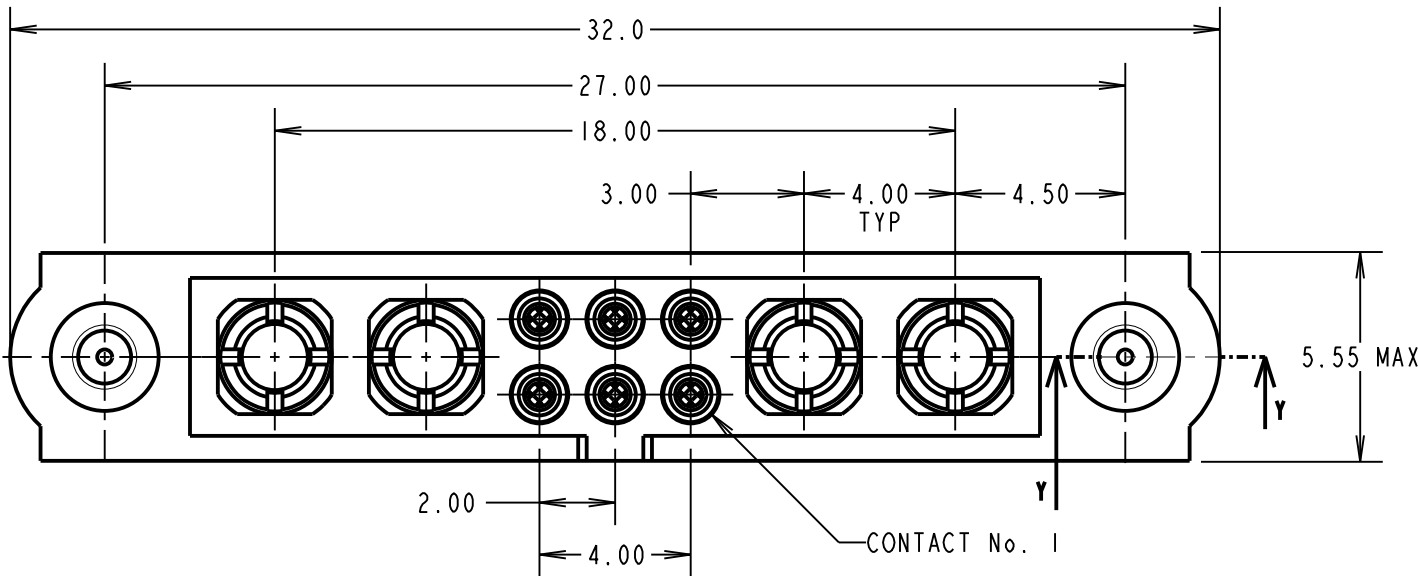
NOT TO SCALE

THIRD ANGLE PROJECTION

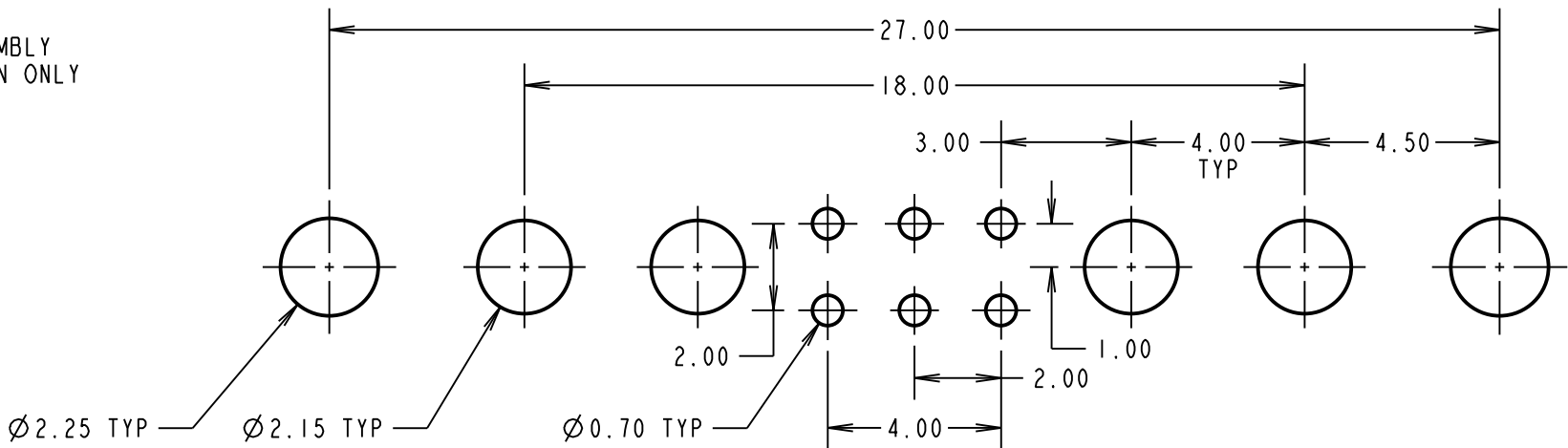
ALL DIMENSIONS IN mm

## SPECIFICATIONS:

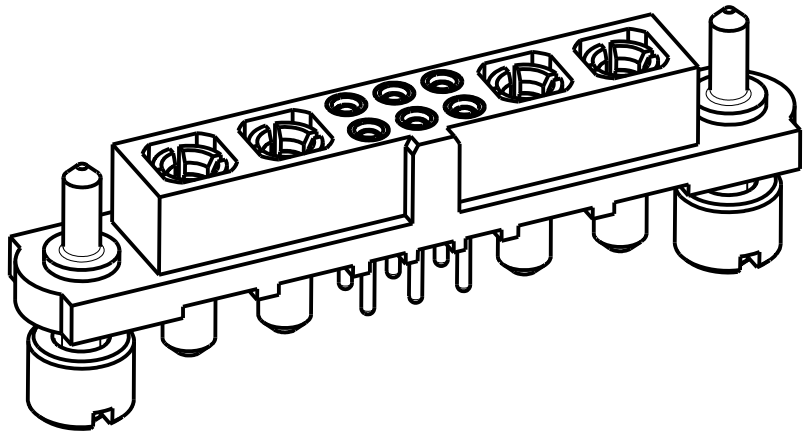
**MATERIAL:**  
MOULDING: GLASS FILLED PPS, UL94V-0, BLACK  
SIGNAL CONTACT:  
CLIP = BERYLIUM COPPER  
SHELL = COPPER ALLOY  
POWER CONTACT: COPPER ALLOY  
JACKSCREW, NUT: STAINLESS STEEL  
**FINISH:**  
SIGNAL CONTACT:  
CLIP = 0.3µm GOLD OVER NICKEL  
SHELL = 0.25-0.3µm GOLD OVER NICKEL  
POWER CONTACT: 0.76µm GOLD OVER NICKEL  
**ELECTRICAL:**  
WORKING VOLTAGE = 800V AC/DC  
VOLTAGE PROOF = 1200V AC/DC  
INSULATION RESISTANCE = 100MΩ MIN  
SIGNAL CONTACT:  
CURRENT RATING AT 25°C = 3.0A MAX  
CURRENT RATING AT 85°C = 2.2A MAX  
CONTACT RESISTANCE = 25mΩ MAX  
SPECIAL CONTACT:  
CONTACT RESISTANCE = 6mΩ MAX  
CURRENT RATING = 40A  
**MECHANICAL:**  
DURABILITY = 500 OPERATIONS  
SIGNAL CONTACT:  
INSERTION FORCE = 2.0N MAX  
WITHDRAWAL FORCE = 0.2N MIN  
POWER CONTACT:  
INSERTION FORCE = 15N MAX  
WITHDRAWAL FORCE = 0.5N MIN  
**ENVIRONMENTAL:**  
TEMPERATURE RANGE = -55°C TO +125°C  
**PACKING:**  
TUBE  
FOR COMPLETE SPECIFICATION SEE COMPONENT  
SPECIFICATION C005XX (LATEST ISSUE)



RECOMMENDED PCB LAYOUT (TOLERANCE ±0.05)



COMPLETE ASSEMBLY  
FOR ILLUSTRATION ONLY



MGP	I	13.07.21	----
NAME	ISS.	DATE	CN/CO
APPROVED: MGP			
CHECKED: RA			
DRAWN: M.G.PLESTED			
CUSTOMER REF.:			
ASSEMBLY DRG:			

**HARWIN**

www.harwin.com  
technical@harwin.com

THIS DRAWING AND ANY  
INFORMATION OR DESCRIPTIVE  
MATTER SET OUT HEREON ARE  
CONFIDENTIAL AND COPYRIGHT  
PROPERTY OF THE HARWIN  
GROUP AND MUST NOT BE  
DISCLOSED, LOANED, COPIED  
OR USED FOR MANUFACTURING,  
TENDERING OR FOR ANY  
OTHER PURPOSE WITHOUT  
THEIR WRITTEN PERMISSION.

**TOLERANCES**  
X. = ±1mm  
X.X = ±0.50mm  
X.XX = ±0.20mm  
X.XXX = ±0.01mm  
**ANGLES = ±5°**  
**UNLESS STATED**

**MATERIAL:**

SEE ABOVE

**FINISH:**

SEE ABOVE

**S/AREA:**

mm<sup>2</sup>

**TITLE:** JACKSCREW DATAMATE  
MIXED TECHNOLOGY VERTICAL  
PC TAIL FEMALE ASSEMBLY

**DRAWING NUMBER:**

**M80-4T10605F3-02-PF1-02-PF1**

SHT

2 OF 2