

Customer Information Sheet

DRAWING No.: S7071-46R

SHEET 2 OF 2

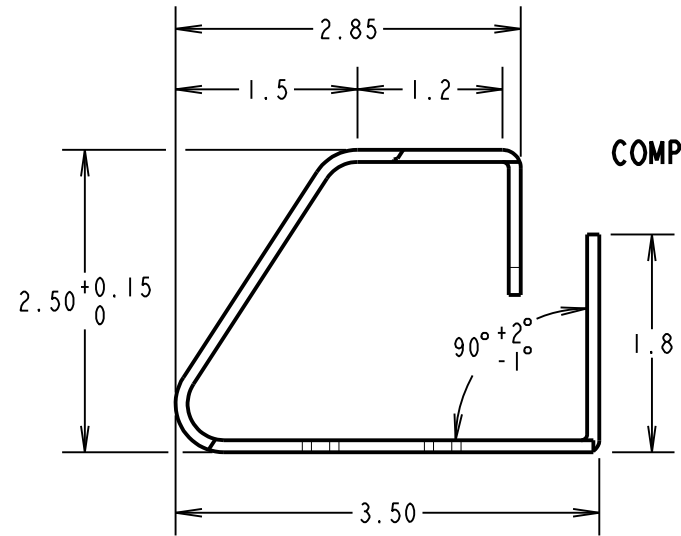
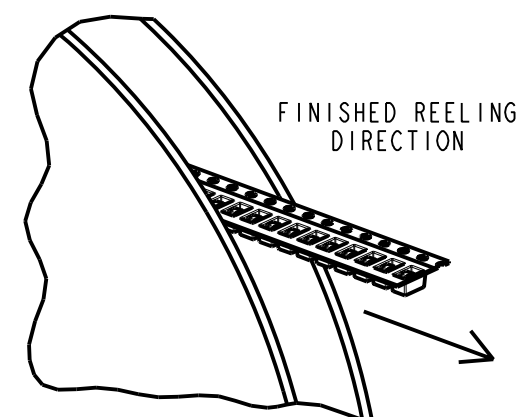
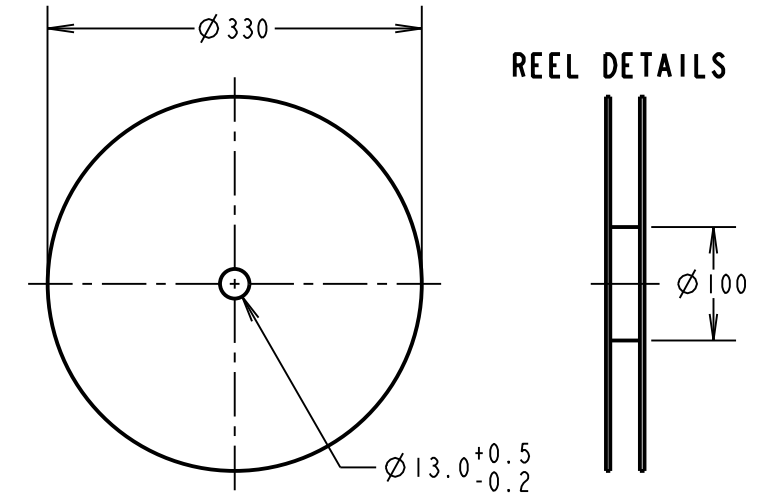
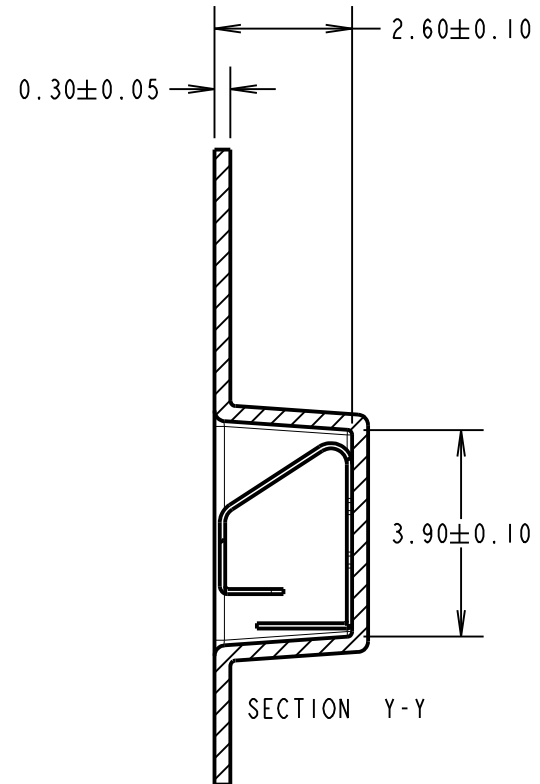
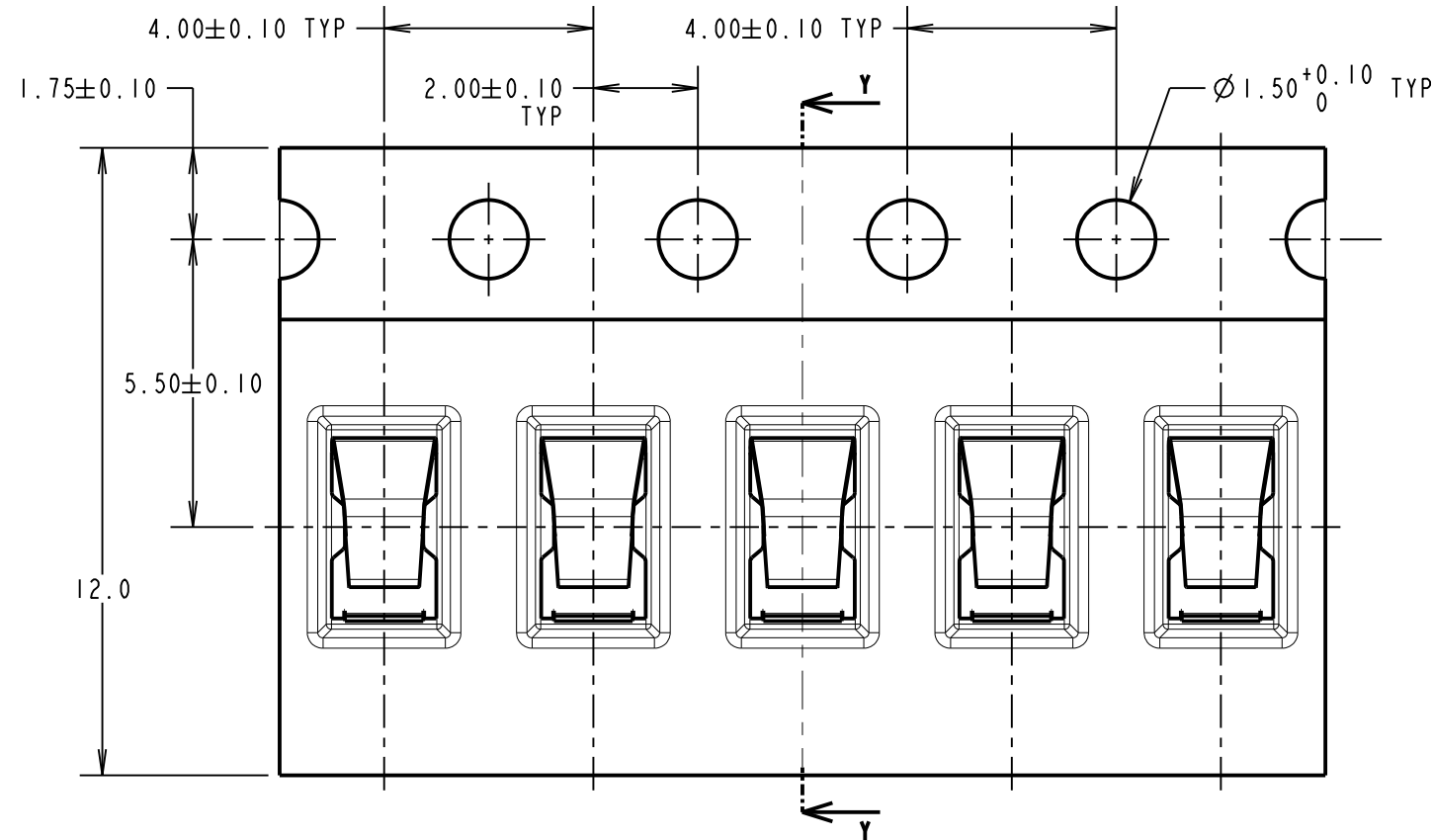
IF IN DOUBT - ASK

©

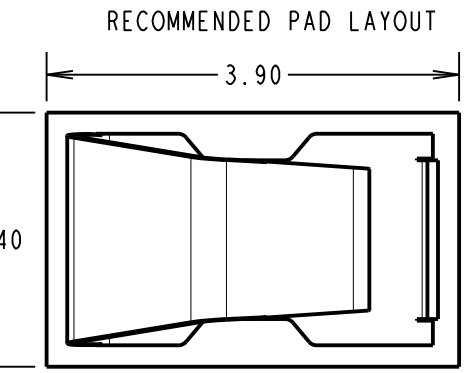
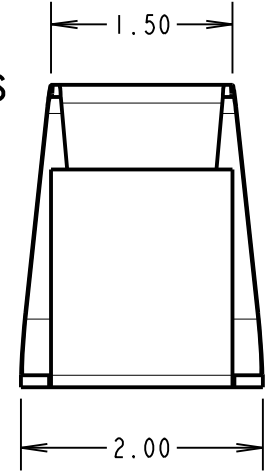
NOT TO SCALE

THIRD ANGLE PROJECTION

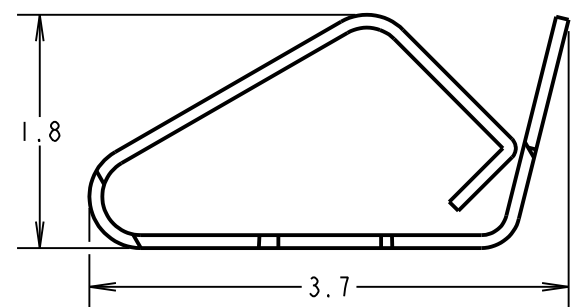
ALL DIMENSIONS IN mm



COMPONENT DETAILS



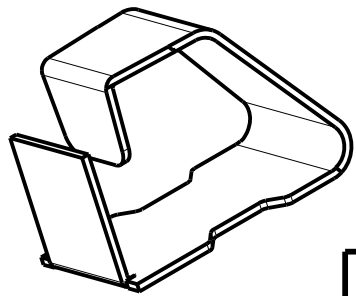
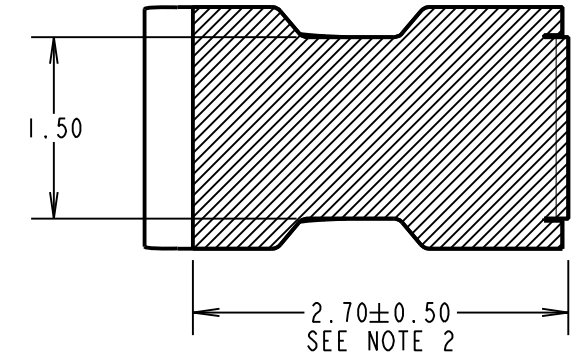
COMPONENT AT MINIMUM RECOMMENDED HEIGHT



COMPONENT SPECIFICATION:
 MATERIAL = TITANIUM COPPER ALLOY,
 0.10mm THICK
 FINISH = 0.7µm-1.3µm NICKEL ALL OVER,
 2.54µm MIN 100% MATTE TIN ON
 FOOT AREA.
 RECOMMENDED WORKING HEIGHT = 2.10mm / MIN FORCE = 1.2N
 RECOMMENDED MINIMUM WORKING HEIGHT = 1.80mm
 ELECTRICAL:
 CURRENT RATING = 5A
 MECHANICAL:
 DURABILITY = 3500 CYCLES
 ENVIRONMENTAL:
 OPERATING TEMPERATURE = -55°C TO +125°C

NOTES:
 1. QUANTITY PER REEL = 6000.
 2. AREA FOR MATTE TIN PLATE.
 3. ALL TOLERANCES ARE: X.X = ±0.30mm
 X.XX = ±0.15mm
 UNLESS OTHERWISE STATED.

MGP	9	11.01.22	31219
NAME	ISS.	DATE	CN/CO
APPROVED: MGP			
CHECKED: RTP			
DRAWN: R.ADDE			
CUSTOMER REF.:			
ASSEMBLY DRG:			



SCALE 1:1

HARWIN
 www.harwin.com
 technical@harwin.com

THIS DRAWING AND ANY INFORMATION OR DESCRIPTIVE MATTER SET OUT HEREON ARE CONFIDENTIAL AND COPYRIGHT PROPERTY OF THE HARWIN GROUP AND MUST NOT BE DISCLOSED, LOANED, COPIED OR USED FOR MANUFACTURING, TENDERING OR FOR ANY OTHER PURPOSE WITHOUT THEIR WRITTEN PERMISSION.

TOLERANCES
 X = ±1mm
 X.X = ±0.50mm
 X.XX = ±0.20mm
 X.XXX = ±0.01mm
 ANGLES = ±5°
 UNLESS STATED

MATERIAL: SEE ABOVE
 FINISH: SEE ABOVE
 S/AREA: mm²

TITLE:
 SMT SHIELD FINGER (2.5mm)
 IN TAPE AND REEL
 DRAWING NUMBER:
S7071-46R
 SHT 2 OF 2