

# Customer Information Sheet

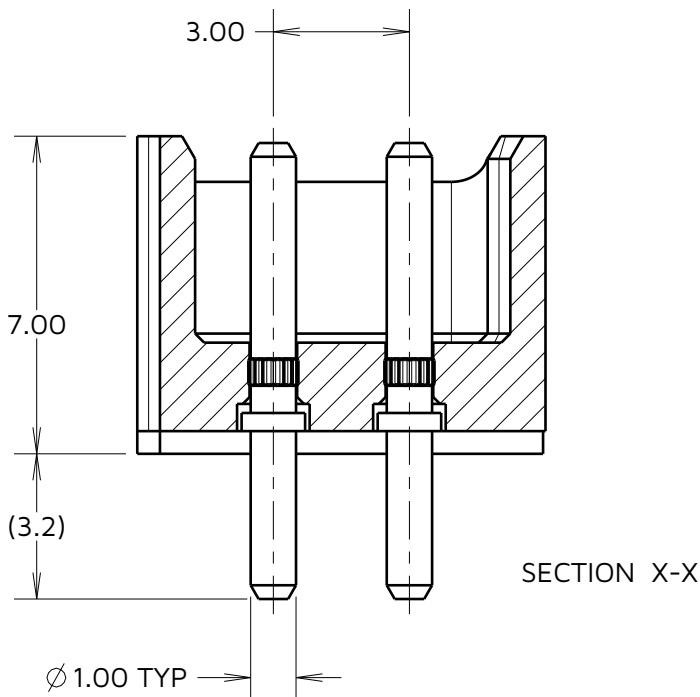
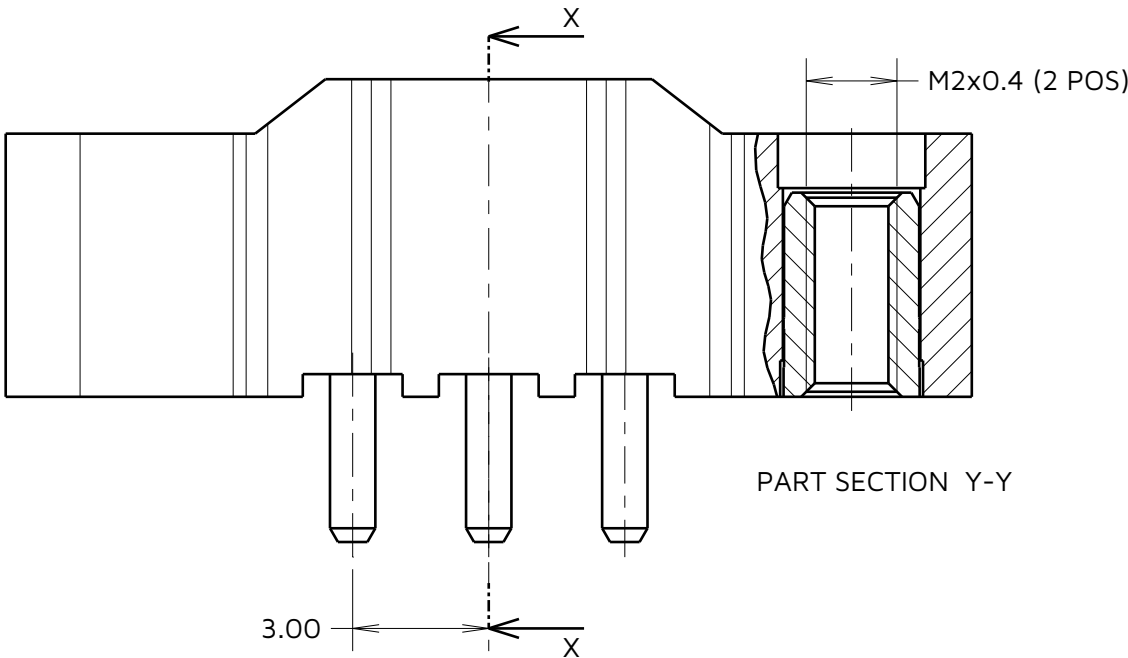
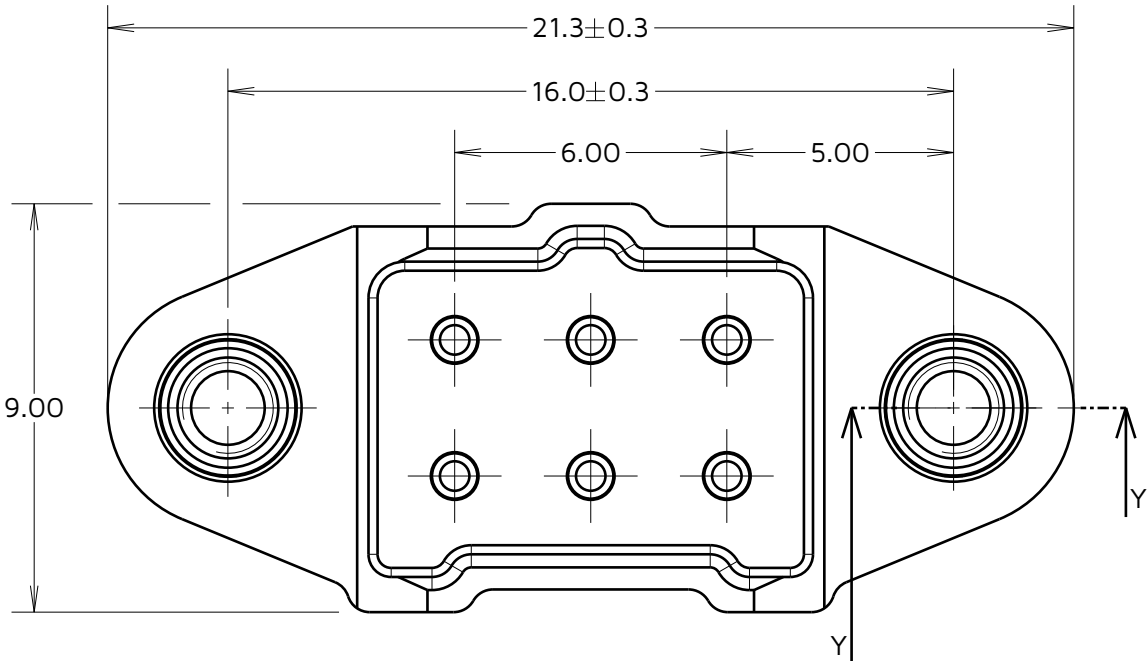
IF IN DOUBT - ASK

©

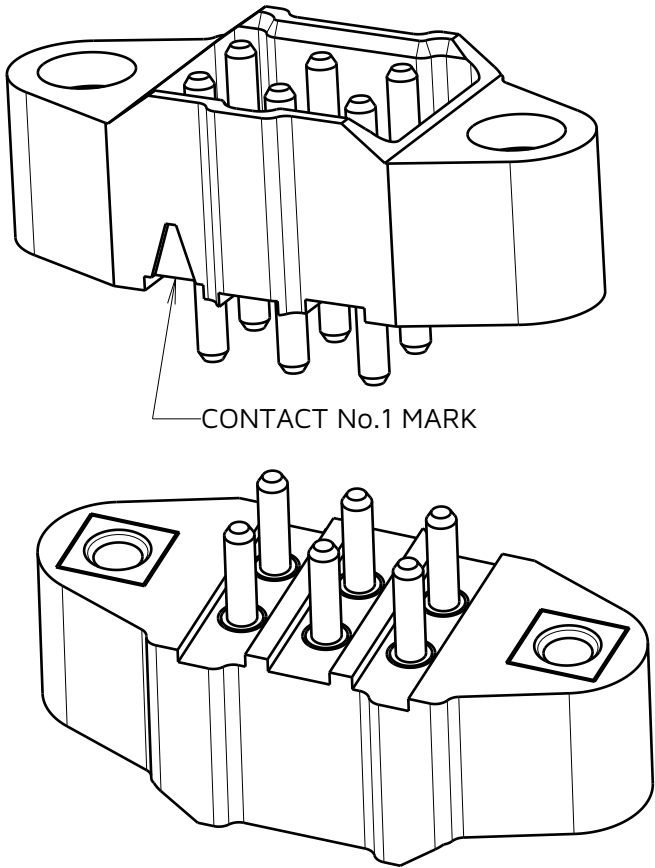
NOT TO SCALE

THIRD ANGLE PROJECTION

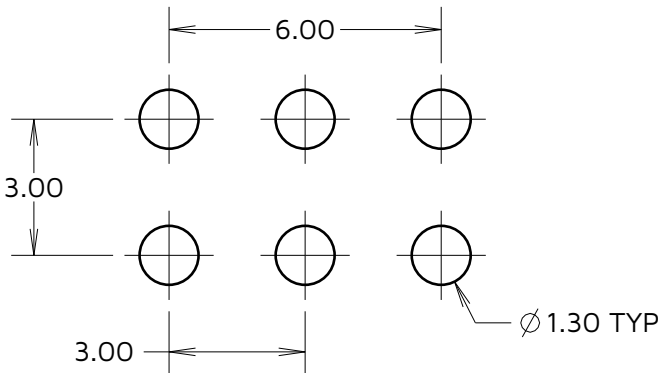
ALL DIMENSIONS IN mm



SPECIFICATONS:  
MATERIAL:  
HOUSING = GLASS-FILLED PA46 UL94V-0, GREEN  
CONTACTS = BRASS  
JACKSCREW NUT = STAINLESS STEEL  
FINISH:  
GOLD  
PACKING:  
TUBE  
FOR COMPLETE SPECIFICATION, SEE COMPONENT  
SPECIFICATION C048XX (LATEST ISSUE)



RECOMMENDED PCB LAYOUT  
(ALL TOLERANCES  $\pm 0.05\text{mm}$ )



**HARWIN**

[www.harwin.com](http://www.harwin.com)

TOLERANCES  
X. =  $\pm 1\text{mm}$   
X.X =  $\pm 0.50\text{mm}$   
X.XX =  $\pm 0.20\text{mm}$   
X.XXX =  $\pm 0.01\text{mm}$   
ANGLES =  $\pm 5^\circ$   
UNLESS STATED

THIS DRAWING AND ANY  
INFORMATION OR DESCRIPTIVE  
MATTER SET OUT HEREON ARE  
CONFIDENTIAL AND COPYRIGHT  
PROPERTY OF THE HARWIN GROUP  
AND MUST NOT BE DISCLOSED,  
LOANED, COPIED OR USED FOR  
MANUFACTURING, TENDERING OR FOR  
ANY OTHER PURPOSE WITHOUT THEIR  
WRITTEN PERMISSION.

MATERIAL & FINISH:  
  
SEE ABOVE

TITLE: 1mm POWER CONNECTOR  
DIL VERTICAL PC TAIL  
MALE ASSEMBLY

DRAWING NUMBER:  
**M300-MV30645M1**

SHT  
2  
OF  
2

RTP	4	05.12.24	35312
NAME	ISS.	DATE	CN/CO
APPROVED: R.PORTLOCK			
CHECKED: A.BOXALL			
DRAWN: MARK G PLESTED			