

Customer Information Sheet

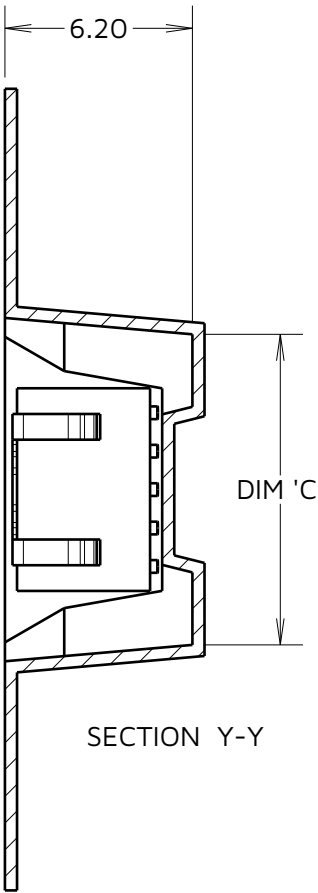
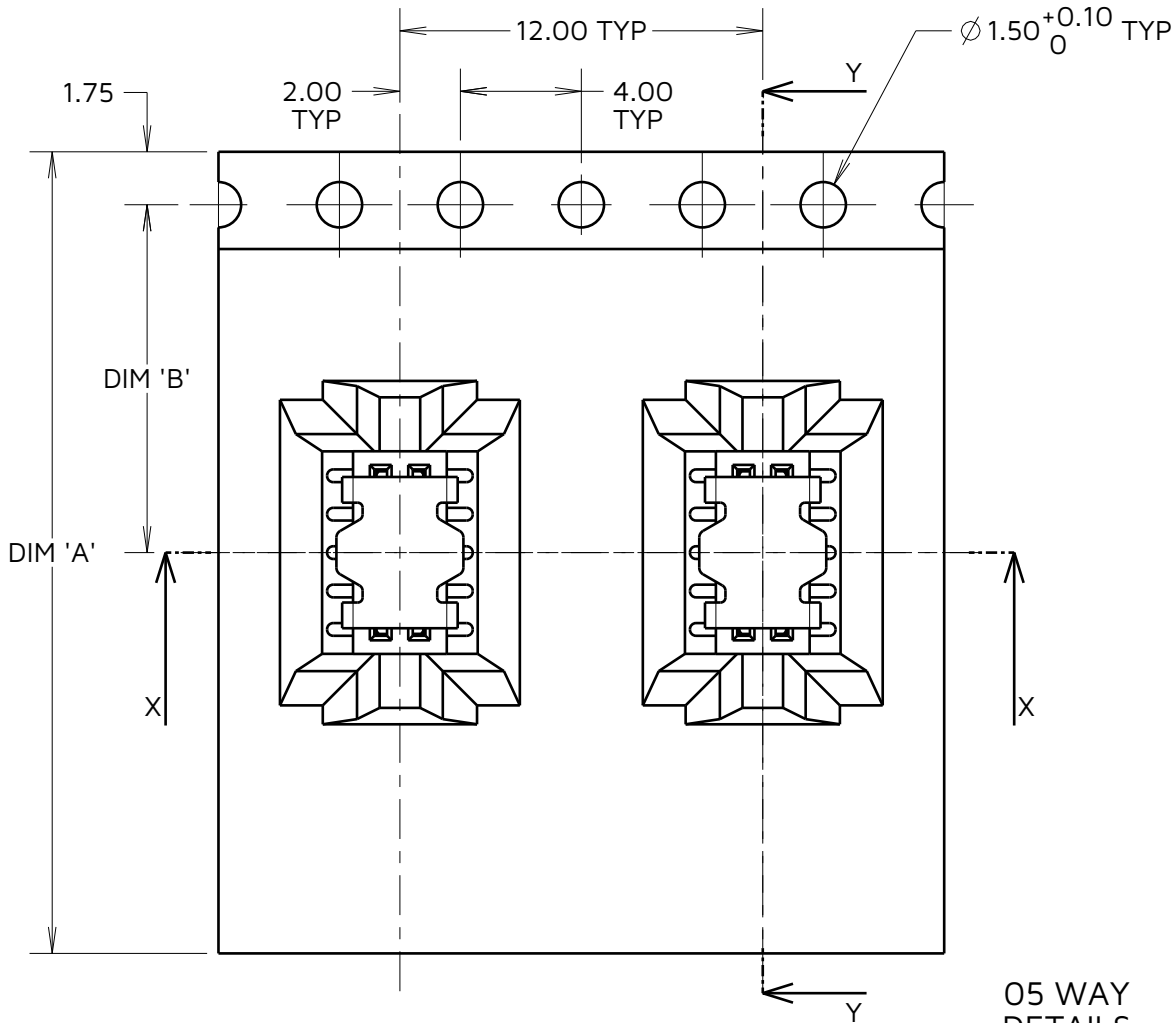
IF IN DOUBT - ASK

©

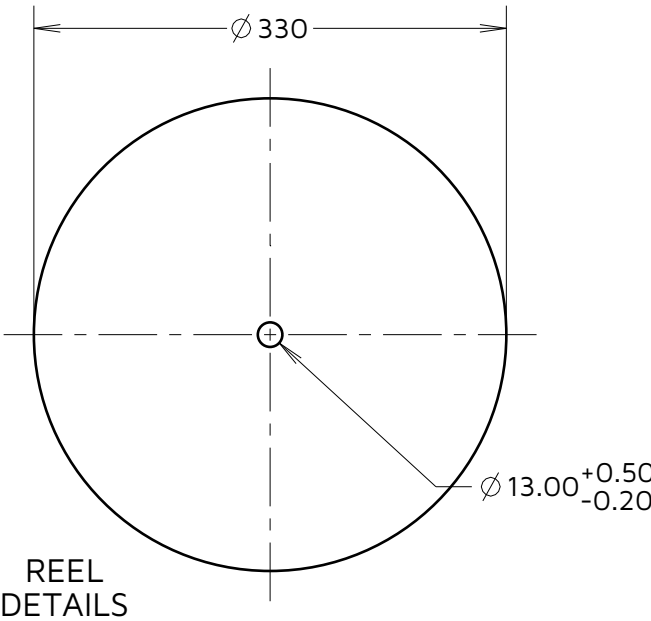
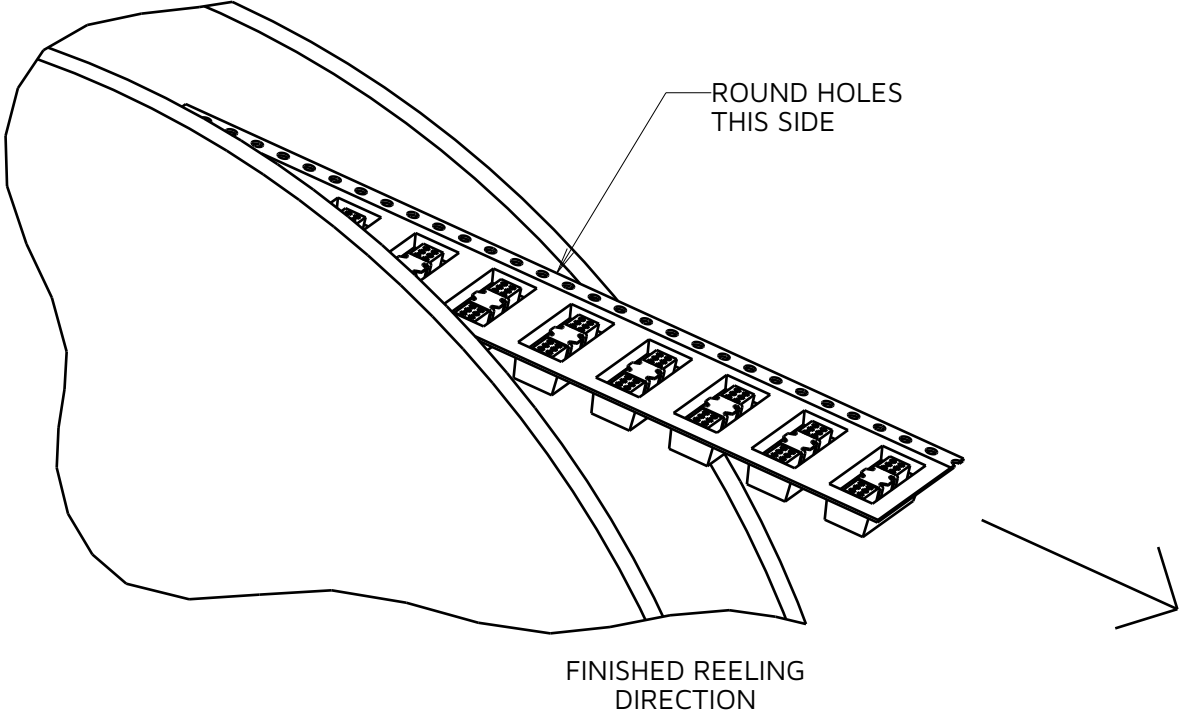
NOT TO SCALE

THIRD ANGLE PROJECTION

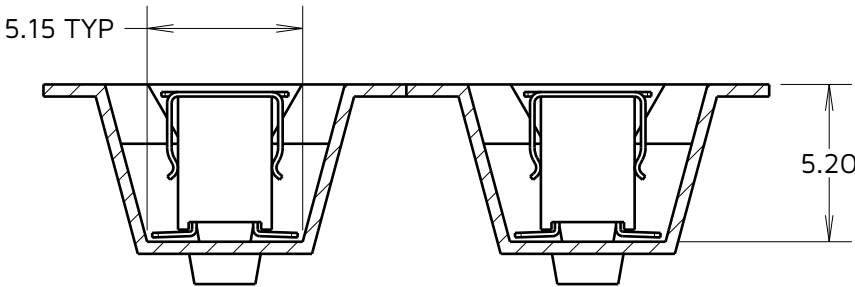
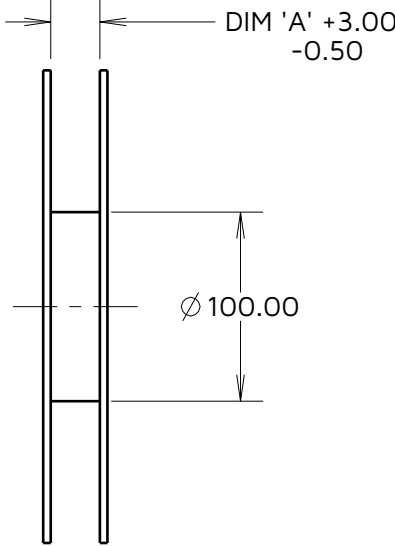
ALL DIMENSIONS IN mm



SECTION Y-Y



REEL DETAILS



SECTION X-X

05 WAY DETAILS

TABLE 1: TAPE AND REEL DIMENSION VARIANTS				
PART NUMBER	DIM 'A' ± 0.30	DIM 'B'	DIM 'C'	QTY PER REEL
M50-3100545R	24.00	11.50	10.50	900
M50-3101045R	24.00	11.50	13.30	1000
M50-3102045R	44.00	20.20	29.55	900
M50-3102545R	56.00	26.20	36.50	800

ORDER CODE:

M50-310XX45R

No. OF CONTACTS PER ROW: 05, 10, 20, 25

CONTACT FINISH

EM	6	24.09.24	34794
NAME	ISS.	DATE	CN/CO
APPROVED:		E.MUNOZ	
CHECKED:		A.YEOMANS	
DRAWN:		R.ADDE	

- NOTES:
- FOR CONNECTOR DETAILS, SEE SHEET 4.
 - TAPE & REEL IS IN ACCORDANCE WITH EIA-481(ELECTRONIC INDUSTRIES ASSOCIATION).
 - PICK & PLACE CAP IS THE SAME FOR ALL SIZES.

HARWIN

www.harwin.com

TOLERANCES
X. = ± 1 mm
X.X = ± 0.50 mm
X.XX = ± 0.20 mm
X.XXX = ± 0.01 mm
ANGLES = $\pm 5^\circ$
UNLESS STATED

THIS DRAWING AND ANY INFORMATION OR DESCRIPTIVE MATTER SET OUT HEREON ARE CONFIDENTIAL AND COPYRIGHT PROPERTY OF THE HARWIN GROUP AND MUST NOT BE DISCLOSED, LOANED, COPIED OR USED FOR MANUFACTURING, TENDERING OR FOR ANY OTHER PURPOSE WITHOUT THEIR WRITTEN PERMISSION.

MATERIAL:

SEE SHEET 4

TITLE: 1.27mm PITCH DIL VERTICAL SMT SOCKET ASSY IN TAPE & REEL WITH PICK AND PLACE CAP

DRAWING NUMBER:
M50-310XX45R

SHT
3
OF
4

Customer Information Sheet

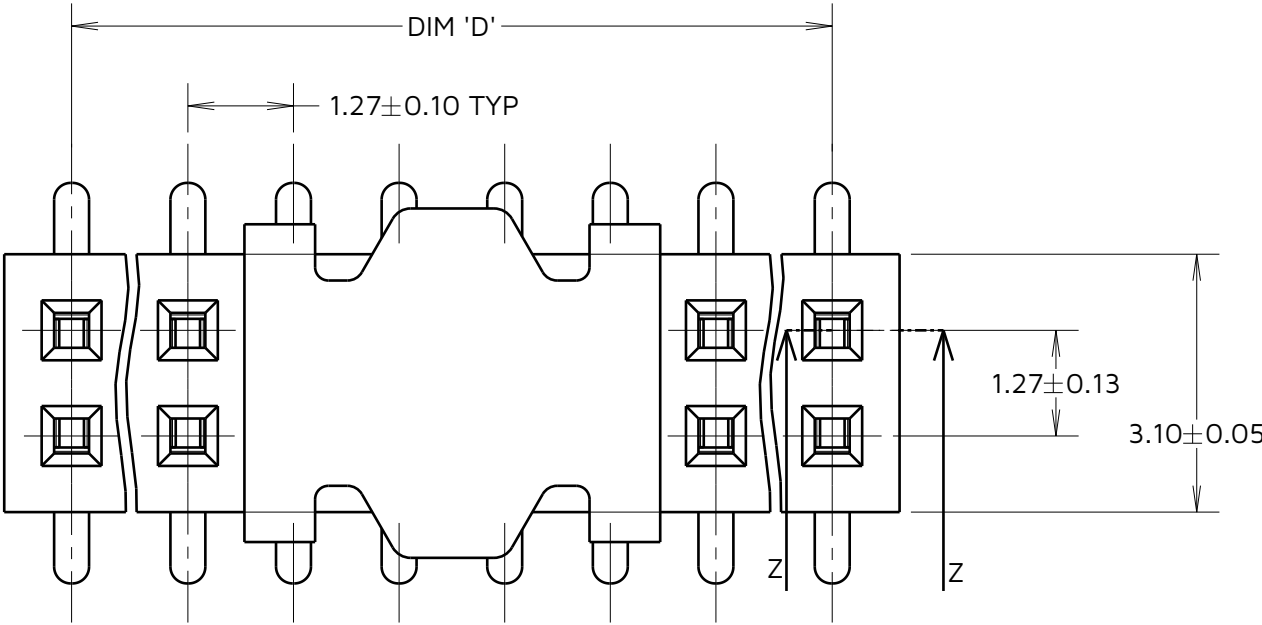
IF IN DOUBT - ASK

©

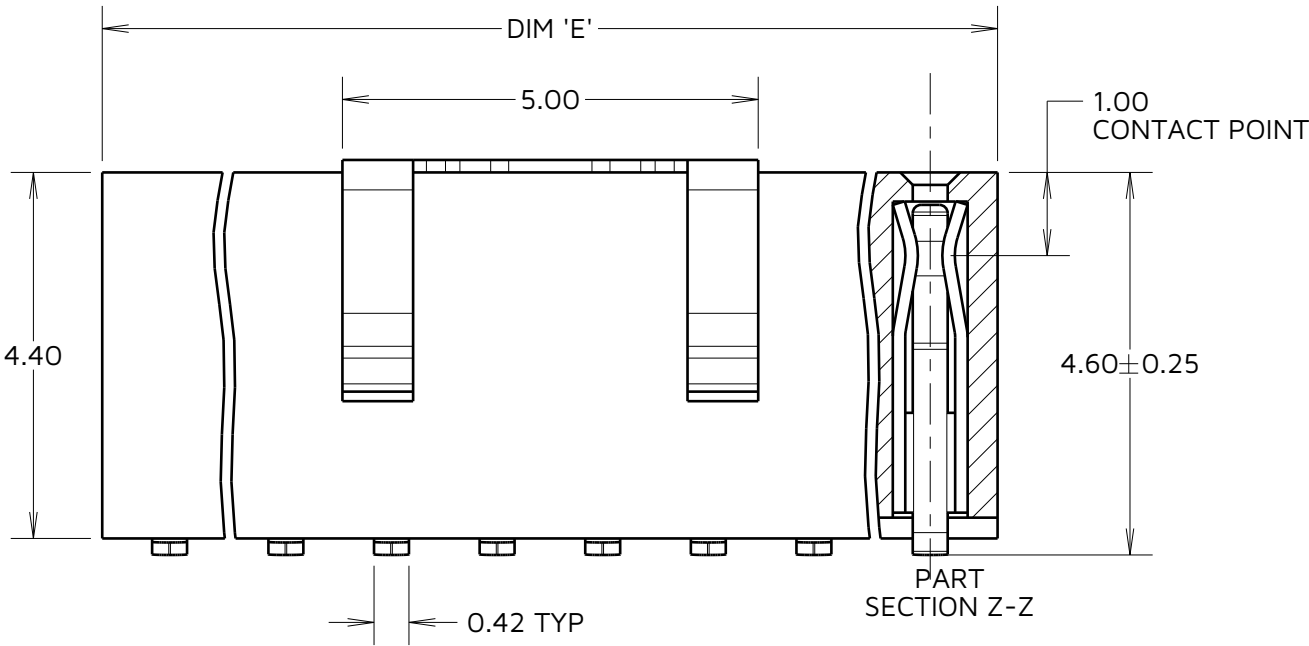
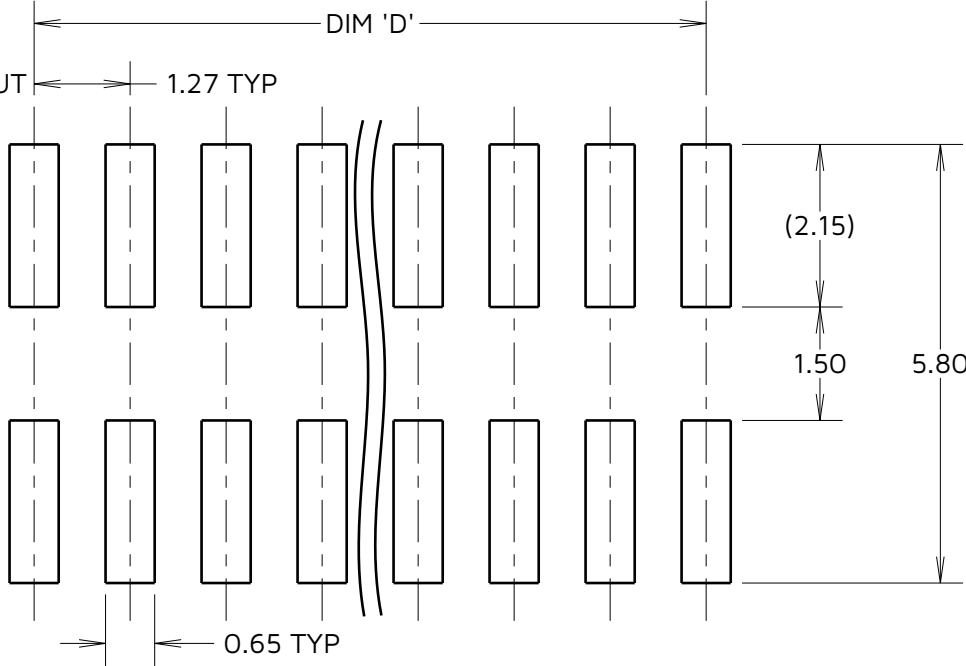
NOT TO SCALE

THIRD ANGLE PROJECTION

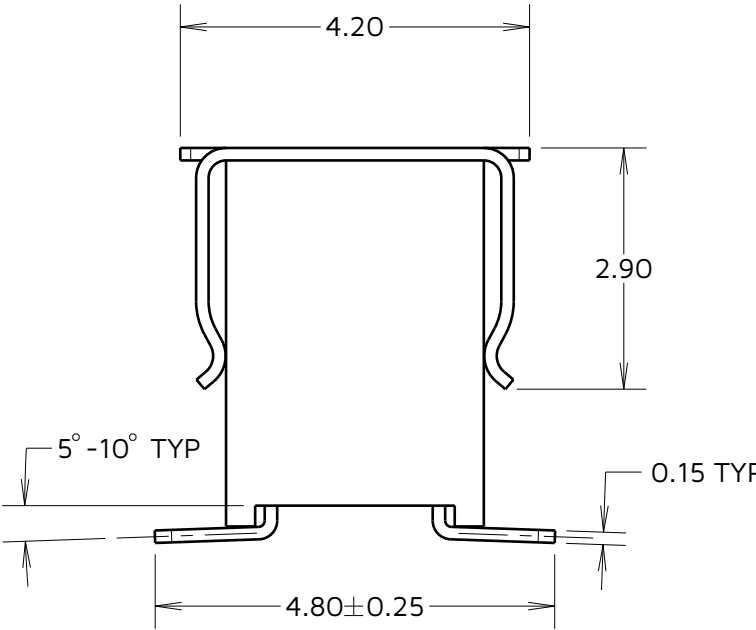
ALL DIMENSIONS IN mm



RECOMMENDED PCB LAYOUT
(TOLERANCE ±0.05)



PART
SECTION Z-Z



SPECIFICATIONS:

MATERIAL:
HOUSING = NYLON 6T UL94V-0, BLACK
CONTACT = PHOSPHOR BRONZE
FINISH:
CONTACT = GOLD FLASH OVER NICKEL

PACKING:
TAPE AND REEL

FOR COMPLETE SPECIFICATION, SEE COMPONENT
SPECIFICATION C029XX (LATEST ISSUE)

TABLE 2: DIMENSION VARIANTS

PART No.	DIM 'D' ±0.25	DIM 'E' ±0.30
M50-3100545R	5.08	6.70
M50-3101045R	11.43	13.05
M50-3102045R	5.08	6.70
M50-3102545R	5.08	6.70

ORDER CODE:

M50-310XX45R

No. OF CONTACTS PER ROW: 05, 10, 20, 25

CONTACT FINISH

EM	6	24.09.24	34794
NAME	ISS.	DATE	CN/CO
APPROVED:	E.MUNOZ		
CHECKED:	A.YEOMANS		
DRAWN:	R.ADDE		

NOTES:
4. ALL TOLERANCES ARE ±0.12 UNLESS OTHERWISE STATED.
5. FOR TAPE AND REEL DETAILS, SEE SHEET 3.

HARWIN

www.harwin.com

TOLERANCES

X. = ±1mm
X.X = ±0.50mm
X.XX = ±0.20mm
X.XXX = ±0.01mm
ANGLES = ±5°
UNLESS STATED

THIS DRAWING AND ANY
INFORMATION OR DESCRIPTIVE
MATTER SET OUT HEREON ARE
CONFIDENTIAL AND COPYRIGHT
PROPERTY OF THE HARWIN GROUP
AND MUST NOT BE DISCLOSED,
LOANED, COPIED OR USED FOR
MANUFACTURING, TENDERING OR FOR
ANY OTHER PURPOSE WITHOUT THEIR
WRITTEN PERMISSION.

MATERIAL:

SEE ABOVE

TITLE: 1.27mm PITCH DIL VERTICAL
SMT SOCKET ASSY IN TAPE &
REEL WITH PICK AND PLACE CAP

DRAWING NUMBER:
M50-310XX45R

SHT
4
OF
4