

# Customer Information Sheet

IF IN DOUBT - ASK

©

NOT TO SCALE

THIRD ANGLE PROJECTION

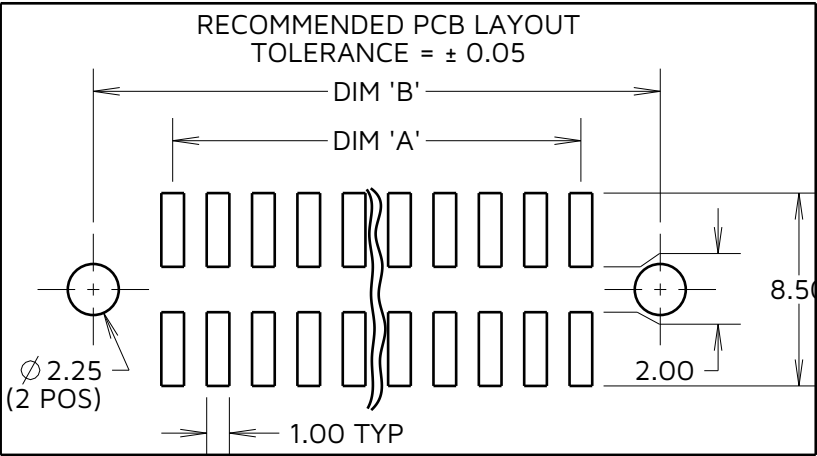
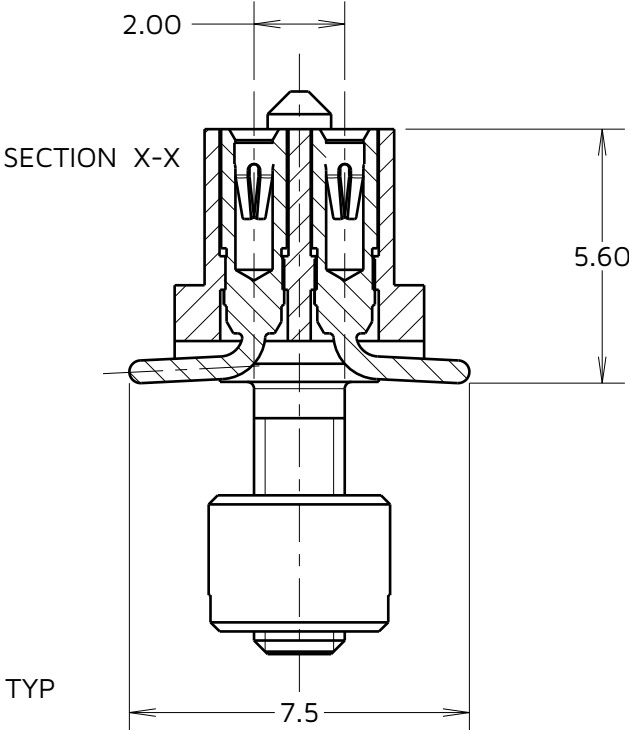
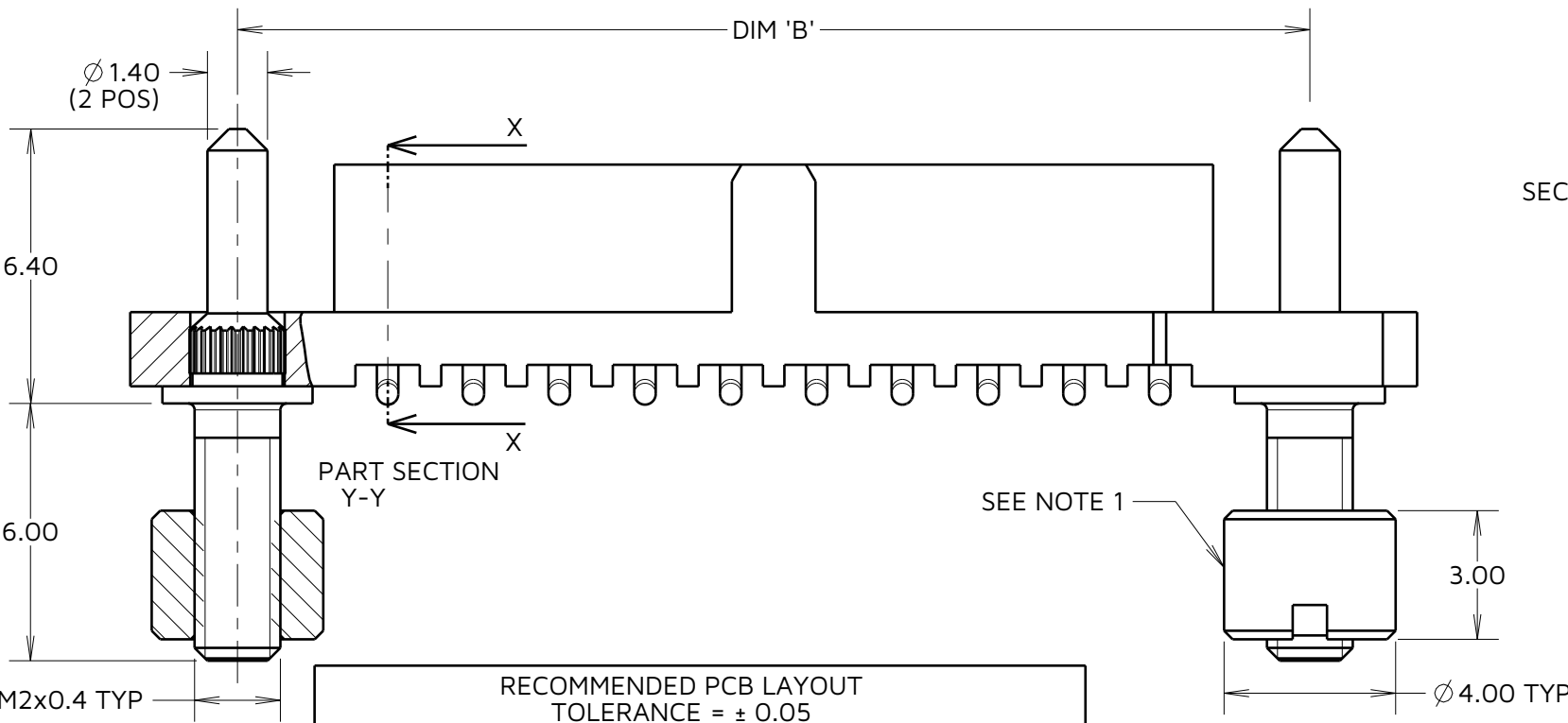
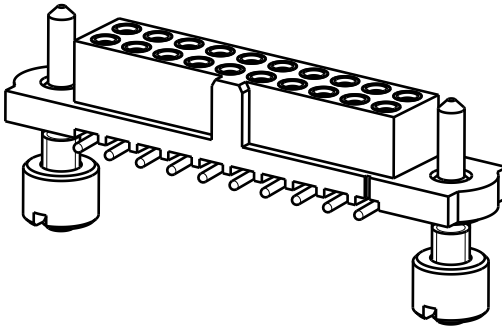
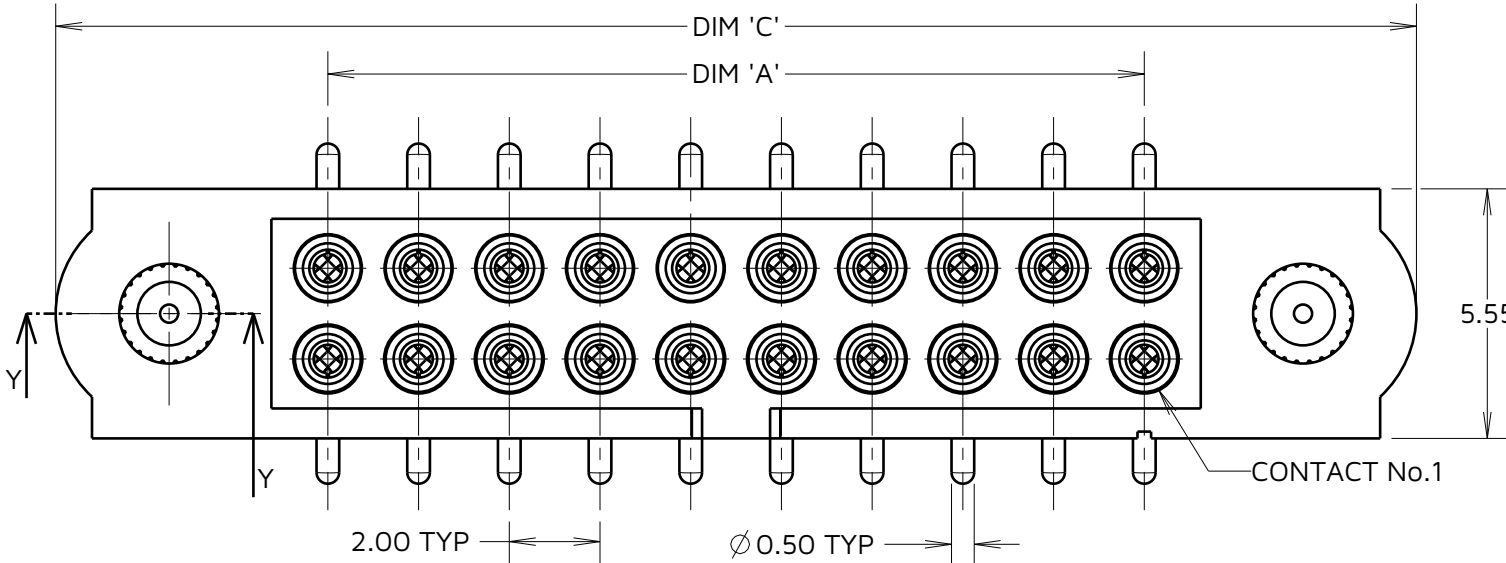
ALL DIMENSIONS IN mm

SPECIFICATIONS:  
MATERIAL:  
HOUSING = GLASS-FILLED PPS, UL94V-0, BLACK  
CONTACT CLIP = BERYLLIUM COPPER  
CONTACT SHELL = BRASS  
JACKSCREW & NUT = STAINLESS STEEL  
FINISH:  
01 = GOLD CLIP, TIN/LEAD SHELL  
05 = GOLD CLIP, GOLD SHELL  
42 = GOLD CLIP,  
100% TIN OVER NICKEL SHELL  
PACKING:  
TUBE  
FOR COMPLETE SPECIFICATION, SEE  
COMPONENT SPEC C005XX (LATEST ISSUE)

TABLE 2: WEIGHTS	
PART No.	WEIGHT (g)
M80-4S104XXFJ	1.43
M80-4S106XXFJ	1.57
M80-4S108XXFJ	1.71
M80-4S110XXFJ	1.85
M80-4S112XXFJ	2.00
M80-4S114XXFJ	2.14
M80-4S116XXFJ	2.28
M80-4S120XXFJ	2.56
M80-4S122XXFJ	2.70
M80-4S124XXFJ	2.85
M80-4S126XXFJ	2.99
M80-4S128XXFJ	3.13
M80-4S130XXFJ	3.27
M80-4S132XXFJ	3.41
M80-4S134XXFJ	3.56
M80-4S136XXFJ	3.70
M80-4S138XXFJ	3.84
M80-4S140XXFJ	3.98
M80-4S142XXFJ	4.12
M80-4S144XXFJ	4.26
M80-4S146XXFJ	4.41
M80-4S148XXFJ	4.55
M80-4S150XXFJ	4.69

TABLE 1: DIMENSION VARIANTS	
DIMENSION	CALCULATION
DIM 'A'	TOTAL No. OF CONTACTS - 2.00
DIM 'B'	TOTAL No. OF CONTACTS + 5.00
DIM 'C'	TOTAL No. OF CONTACTS + 10.0
EXAMPLE: CONNECTOR WITH 20 CONTACTS, GOLD CLIP AND 100% TIN OVER NICKEL SHELL, M80-4S12042FJ	
DIM 'A' = 18.00mm, DIM 'B' = 25.00mm, DIM 'C' = 30.00mm	

NOTES:  
1. BOARD MOUNTING NUTS SUPPLIED LOOSE. NOT ASSEMBLED AS SHOWN.  
2. COPLANARITY ALIGNMENT OF CONTACT TAILS AND BOARD MOUNT SHOULDER = 0.20mm MAX.  
3. M80-4S120XXFJ IS SHOWN FOR ILLUSTRATION PURPOSES, SEE ORDER SEE ORDER CODE FOR VARIANTS



ORDER CODE:  
**M80-4S1XXXXFJ**  
TOTAL No. OF CONTACTS  
04 TO 50  
(EVEN NUMBERS ONLY)  
FINISH  
01 - GOLD CLIP, TIN/LEAD SHELL  
05 - GOLD CLIP, GOLD SHELL  
42 - GOLD CLIP, 100% TIN OVER NICKEL SHELL

MJ	5	18.12.24	35293
NAME	ISS.	DATE	CN/CO
APPROVED:		M. JELLEY	
CHECKED:		R. ALEXANDER	
DRAWN:		MARK G PLESTED	

**HARWIN**  
www.harwin.com

TOLERANCES  
X. = ±1mm  
X.X = ±0.50mm  
X.XX = ±0.20mm  
X.XXX = ±0.01mm  
ANGLES = ±5°  
UNLESS STATED

THIS DRAWING AND ANY INFORMATION OR DESCRIPTIVE MATTER SET OUT HEREON ARE CONFIDENTIAL AND COPYRIGHT PROPERTY OF THE HARWIN GROUP AND MUST NOT BE DISCLOSED, LOANED, COPIED OR USED FOR MANUFACTURING, TENDERING OR FOR ANY OTHER PURPOSE WITHOUT THEIR WRITTEN PERMISSION.

MATERIAL & FINISH:  
  
SEE ABOVE

TITLE: **DATAMATE J-TEK FEMALE VERTICAL SMT ASSY WITH GUIDE + BOARD MOUNT**  
DRAWING NUMBER: **M80-4S1XXXXFJ**  
SHT 2 OF 2