

Customer Information Sheet

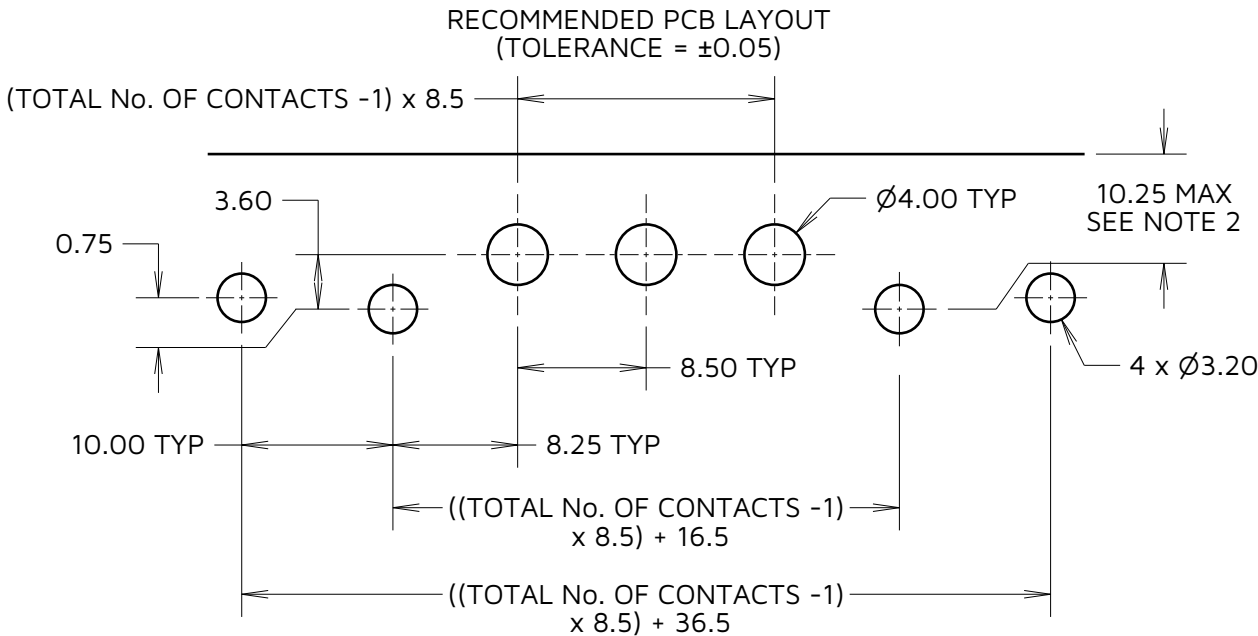
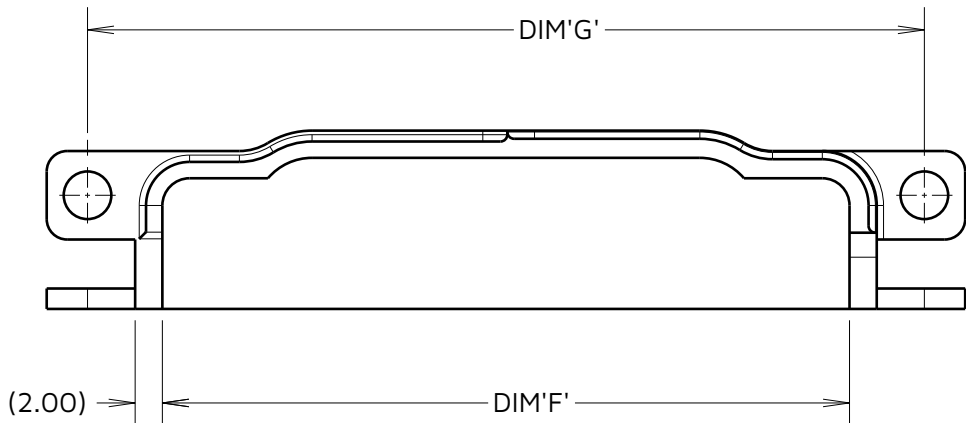
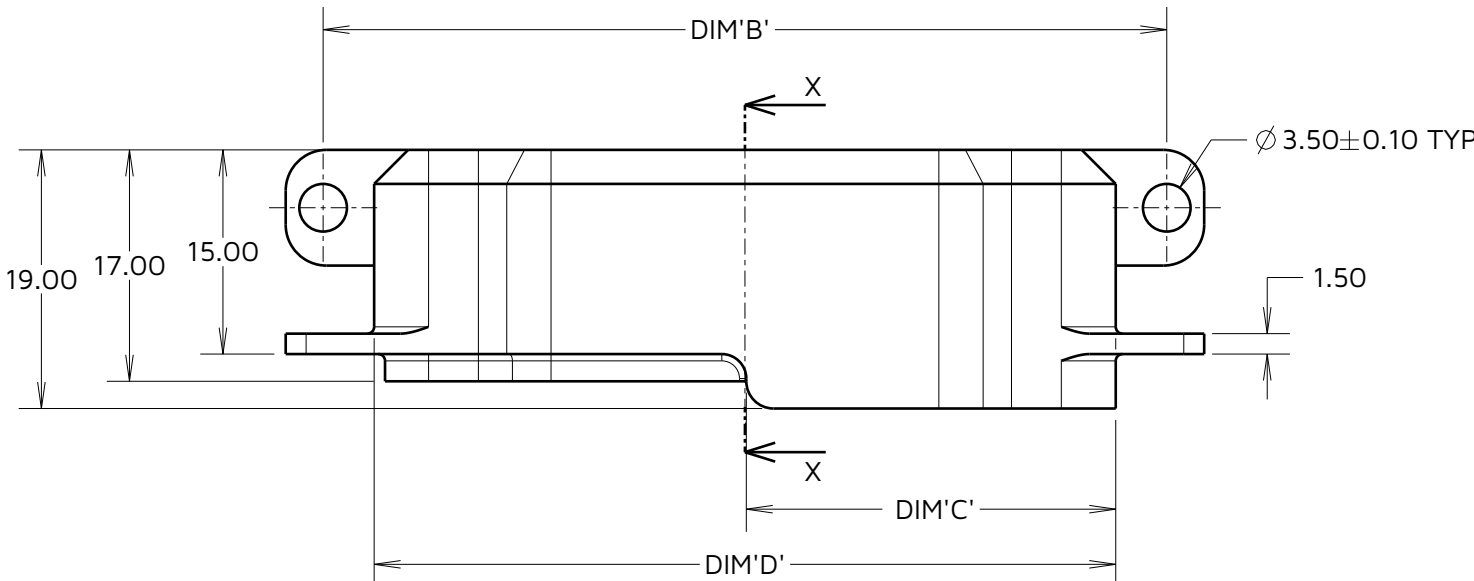
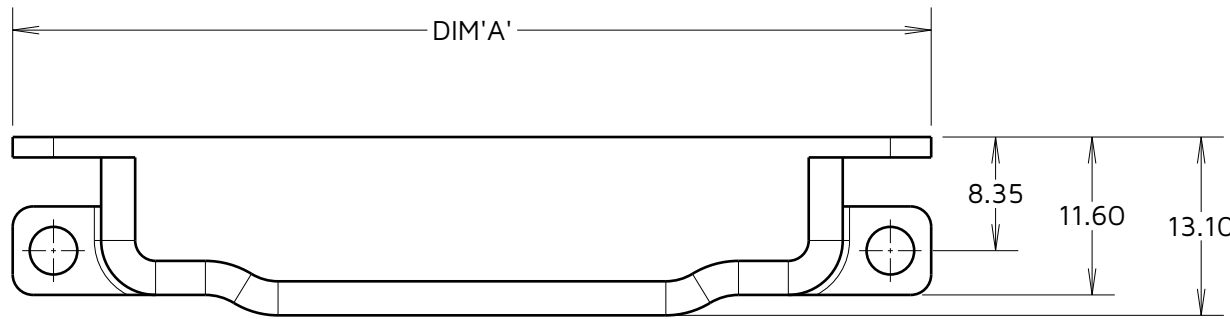
IF IN DOUBT - ASK

©

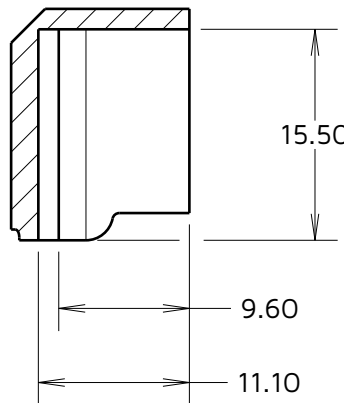
NOT TO SCALE

THIRD ANGLE PROJECTION

ALL DIMENSIONS IN mm



SECTION X-X



- NOTES:
- LAYOUTS ONLY FOR BACKSHELL MOUNTING, FOR CONNECTOR PCB LAYOUT SEE COMPONENT DRAWING.
 - MAXIMUM DISTANCE FROM EDGE OF BOARD WHEN PAIRING WITH SHIELDED CABLE.
 - MOUNTING HARDWARE NOT PROVIDED, M3 FIXINGS WITH 5.7mm MAX BOLT HEAD DIAMETER RECOMMENDED.
 - METAL SHELL SUITABLE FOR THE FOLLOWING KONA SERIES CONNECTORS:
KAI-MH1XX05M3

PART NUMBER	DIM 'A'	DIM 'B'	DIM 'C'	DIM 'D'	DIM 'E'	DIM 'F'	DIM 'G'	WEIGHT
KA1-9610202	50.50	45.00	18.65	37.50	11.50	33.50	44.50	6.51g
KA1-9610302	59.00	53.50	22.90	46.00	20.00	42.00	53.00	7.60g
KA1-9610402	67.50	62.00	27.15	54.50	28.50	50.50	61.50	8.69g

FC	1	31.08.23	32981
NAME	ISS.	DATE	CN/CO
APPROVED: R.PORTLOCK			
CHECKED: A.BOXALL			
DRAWN: F.CHRISPINE			
ASSEMBLY DRG:			

ORDER CODE:
KA1-961XX02
TOTAL No. OF CONTACTS 
02, 03, 04

HARWIN

www.harwin.com

TOLERANCES
X. = $\pm 1\text{mm}$
X.X = $\pm 0.50\text{mm}$
X.XX = $\pm 0.20\text{mm}$
X.XXX = $\pm 0.01\text{mm}$
ANGLES = $\pm 5^\circ$
UNLESS STATED

THIS DRAWING AND ANY INFORMATION OR DESCRIPTIVE MATTER SET OUT HEREON ARE CONFIDENTIAL AND COPYRIGHT PROPERTY OF THE HARWIN GROUP AND MUST NOT BE DISCLOSED, LOANED, COPIED OR USED FOR MANUFACTURING, TENDERING OR FOR ANY OTHER PURPOSE WITHOUT THEIR WRITTEN PERMISSION.

MATERIAL:

SEE COMPONENT SPECIFICATION C052XX (LATEST ISSUE)

TITLE:
KONA HORIZONTAL METAL BACKSHELL

DRAWING NUMBER:
KA1-961XX02

SHT
3
OF
4

Customer Information Sheet

IF IN DOUBT - ASK

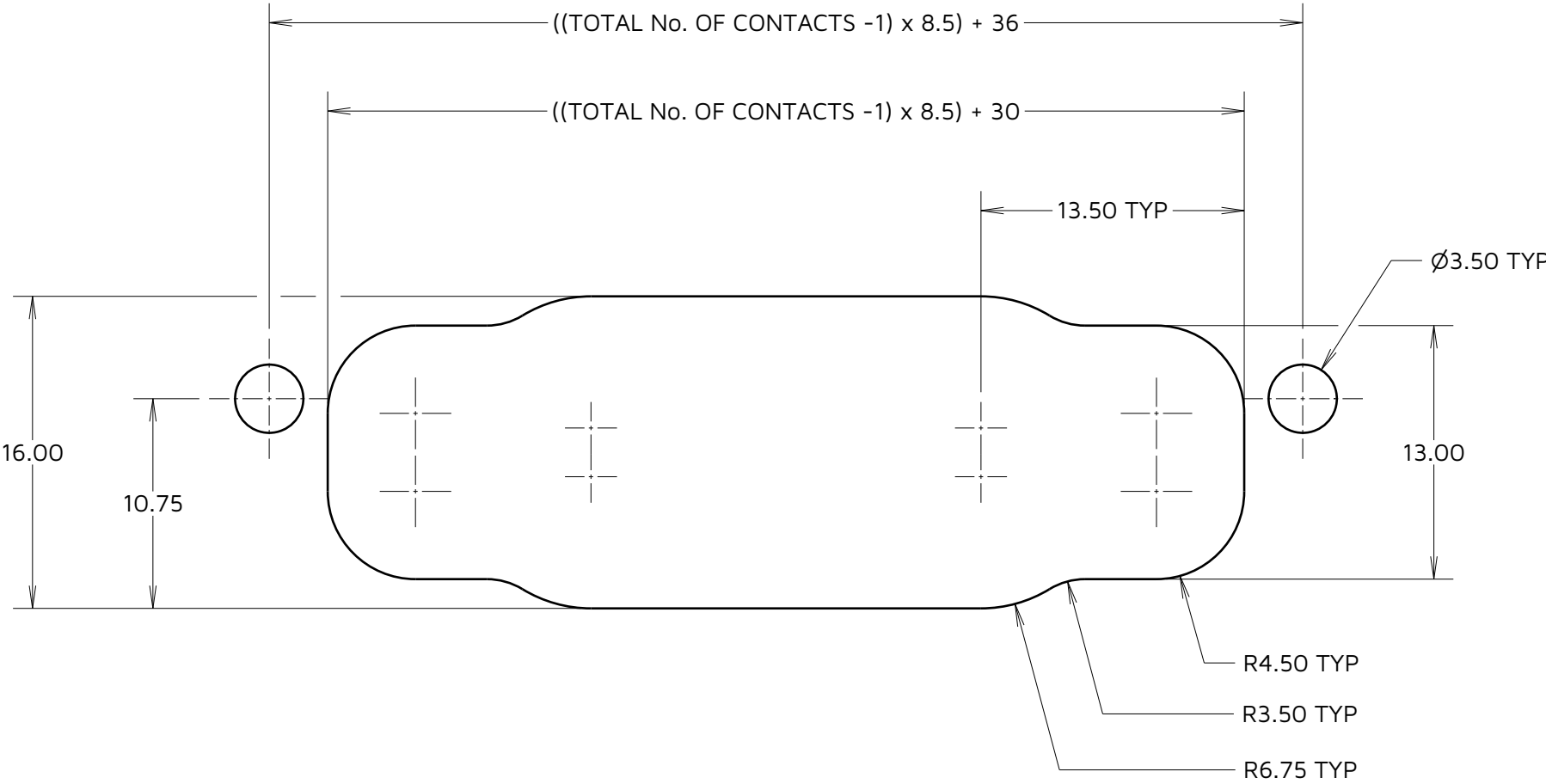
©

NOT TO SCALE

THIRD ANGLE PROJECTION

ALL DIMENSIONS IN mm

RECOMMENDED PANEL CUTOUT FOR USE WITH SHIELDED ASSEMBLIES
(TOLERANCE = ± 0.05)



FC	1	31.08.23	32981
NAME	ISS.	DATE	CN/CO
APPROVED: R.PORTLOCK			
CHECKED: A.BOXALL			
DRAWN: F.CHRISPINE			
ASSEMBLY DRG:			

HARWIN

www.harwin.com

TOLERANCES
X. = $\pm 1\text{mm}$
X.X = $\pm 0.50\text{mm}$
X.XX = $\pm 0.20\text{mm}$
X.XXX = $\pm 0.01\text{mm}$
ANGLES = $\pm 5^\circ$
UNLESS STATED

THIS DRAWING AND ANY INFORMATION OR DESCRIPTIVE MATTER SET OUT HEREON ARE CONFIDENTIAL AND COPYRIGHT PROPERTY OF THE HARWIN GROUP AND MUST NOT BE DISCLOSED, LOANED, COPIED OR USED FOR MANUFACTURING, TENDERING OR FOR ANY OTHER PURPOSE WITHOUT THEIR WRITTEN PERMISSION.

MATERIAL:

SEE SHEET 3

TITLE:
**KONA HORIZONTAL
METAL BACKSHELL**

DRAWING NUMBER:
KA1-961XX02

SHT
4
OF
4