

Customer Information Sheet

IF IN DOUBT - ASK



NOT TO SCALE

THIRD ANGLE PROJECTION

ALL DIMENSIONS IN mm

TABLE 1: CONFIGURATIONS & BILL OF MATERIALS

ORDER CODE CONFIGURATIONS											BOM ITEM No.			
											1	2	3	4
G125-XXXXXXXX-XXXXL											CONNECTOR (SEE ORDER CODE FOR TOTAL No. OF CONTACTS)	PTFE WIRE (SEE C049XX FOR SPEC.)	CONNECTOR CONTACT (SEE ORDER CODE FOR QTY.)	HEATSHRINK
G125	-	FC FD	1 2	XX	05 68	F0 F1 F2 F3 F5	-	XXXX	L	X X	G125-224XX9600 G125-224XX96F1 G125-224XX96F2 G125-224XX96F3 G125-224XX96F5	STANDARD WHITE WIRE MULTI-COLOURED SEE TABLE 2 TWISTED PAIRS 2TPI: 26AWG & 28AWG: WHITE & RED 3TPI: 26AWG & 28AWG: WHITE & GREEN SEE TABLE 3 ON SHEET 8 FOR TWISTED PAIR WIRE COLOUR CONFIGURATION	FEMALE SIGNAL 26AWG: G125-0010005 28AWG: G125-0020005 MALE SIGNAL 26AWG: G125-1010005 28AWG: G125-1020005	FOR TWISTED PAIR CABLE ASSEMBLIES ONLY SEE C049XX FOR SPEC. (LATEST ISSUE)
		MC MD		XX		M0 M1 M2 M3 M5					G125-324XX9600 G125-324XX96M1 G125-324XX96M2 G125-324XX96M3 G125-324XX96M5			

TABLE 2: MULTI-COLOURED WIRE
(FOR '68' OPTION ONLY)

CONTACT No.	WIRE COLOUR
1	BLACK
2	BROWN
3	RED
4	ORANGE
5	YELLOW
6	GREEN
7	BLUE
8	VIOLET
9	GREY
10	WHITE
WIRE COLOURS REPEAT IN ABOVE ORDER FOR CONNECTOR ASSEMBLIES OVER 10 CONTACTS	

- NOTES:
- FOR COMPLETE SPECIFICATION, INCLUDING WIRE TYPE AND GAUGE SEE COMPONENT SPECIFICATIONS C125XX & C049XX (LATEST ISSUES).
 - FOR POTTING COMPOUND AND WIRE TYPE SEE C049XX COMPONENT SPECIFICATION.
 - SEE SHEET 7 FOR ASSEMBLIES WITH STANDARD WIRING CONFIGURATIONS.
 - SEE SHEET 8 FOR ASSEMBLIES WITH TWISTED PAIR WIRING CONFIGURATIONS.
 - SEE SHEET 9 FOR HARDWARE FIXING INFORMATION.
 - FOR ALL HOUSING DIMENSIONS, SEE RESPECTIVE DRAWINGS FOR BOM ITEM 1.
 - CABLE ASSEMBLIES ARE BULK PACKED IN BAGS.
 - CUSTOM LENGTH CABLE ASSEMBLIES CAN BE PRODUCED FROM 60mm TO 9999mm.
 - "FD"/"MD" AND "68" COMBINATION (TWISTED PAIRS AND MULTI-COLOURED SIGNAL WIRE) NOT AVAILABLE TO ORDER.
 - FOR TWISTED PAIR CABLES ASSEMBLIES, USE '05' (WHITE) WIRE COLOUR IN ORDER CODE.
 - AN ASSEMBLY WITH NO STRIPPED CABLE WITH HAVE THE LAST TWO CHARACTERS OF THE PART NUMBER BLANK (I.E. G125-XXXXXXXX-XXXXL).
 - CABLE LENGTH LESS THAN 60mm IS POSSIBLE, BUT MUST BE ENQUIRED.

ORDER CODE:

G125-XXXXXXXX-XXXXLXX

CONNECTOR:
F = FEMALE
M = MALE

WIRING STYLE:
C = STANDARD WIRE
D = TWISTED PAIR

WIRE GAUGE:
1 = 26AWG
2 = 28AWG

TOTAL No. OF CONTACTS:
06, 10, 12, 16,
20, 26, 34, 50

WIRING:
05 = WHITE
68 = MULTI-COLOURED
98 = BLACK
99 = RED

LENGTH OF SIGNAL
CABLE PRE-STRIP (DIM 'B'):
X = 1-9mm

WIRE END:
BLANK = CUT END (SEE NOTE 11)
A = PRE-STRIPPED (IS-37 & IS-44)
B = PRE-STRIPPED CUSTOM LENGTH

DIM 'A' LENGTH:
0060 = 60mm MIN (SEE NOTE 12)
9999 = 9999mm MAX

CONNECTOR FIXING STYLE:
F0/F1/F2/F3/F5
M0/M1/M2/M3/M5

HARWIN

www.harwin.com

TOLERANCES
X. = $\pm 1\text{mm}$
X.X = $\pm 0.50\text{mm}$
X.XX = $\pm 0.20\text{mm}$
X.XXX = $\pm 0.01\text{mm}$
ANGLES = $\pm 5^\circ$
UNLESS STATED

THIS DRAWING AND ANY
INFORMATION OR DESCRIPTIVE
MATTER SET OUT HEREON ARE
CONFIDENTIAL AND COPYRIGHT
PROPERTY OF THE HARWIN GROUP
AND MUST NOT BE DISCLOSED,
LOANED, COPIED OR USED FOR
MANUFACTURING, TENDERING OR FOR
ANY OTHER PURPOSE WITHOUT THEIR
WRITTEN PERMISSION.

MATERIAL:

SEE ABOVE

TITLE:

GECKO SL
CABLE ASSEMBLY

DRAWING NUMBER:

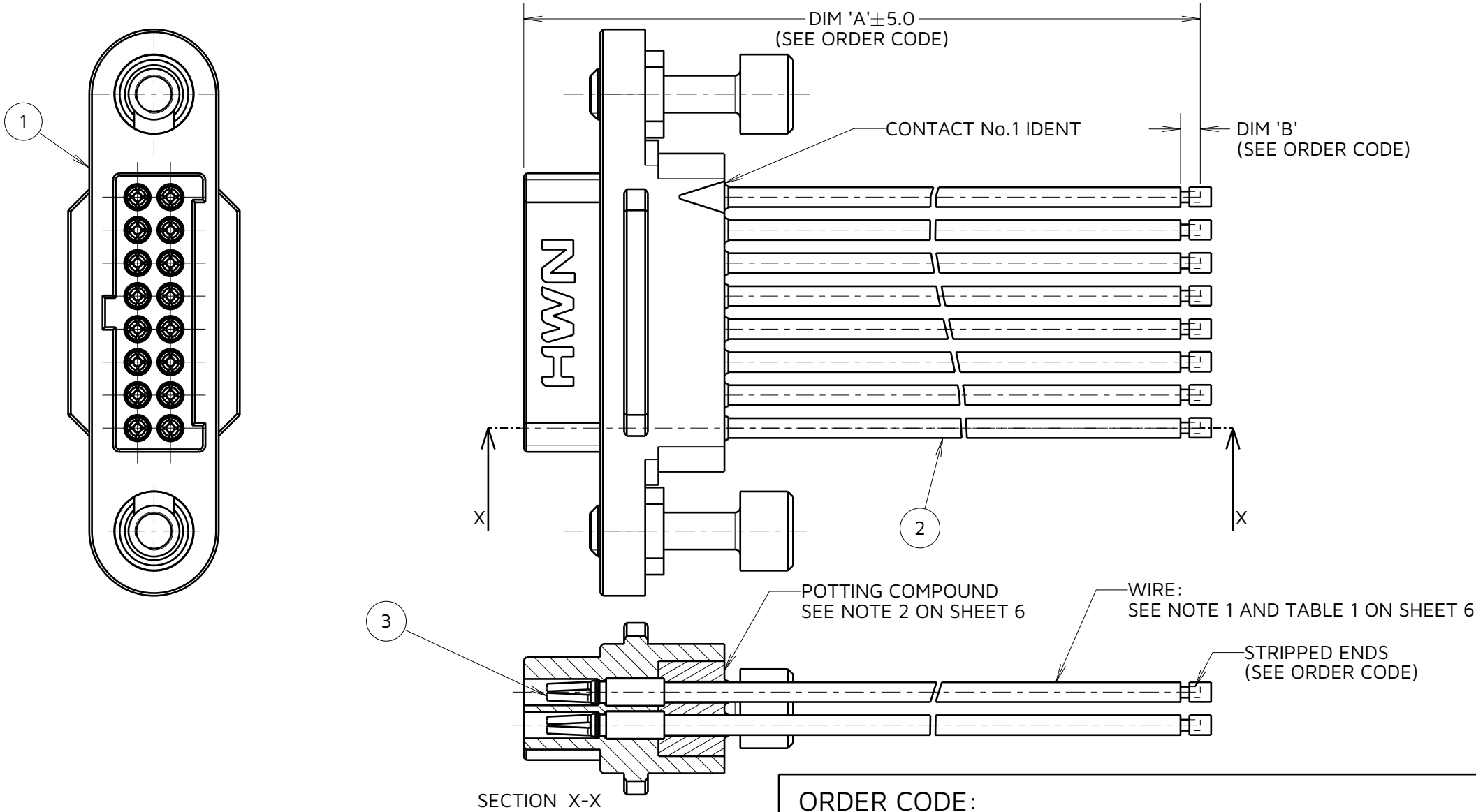
G125-XXXXXXXX-XXXXLXX

SHT
6
OF
9

RTP	2	12.06.24	33917
NAME	ISS.	DATE	CN/CO
APPROVED:		R.PORTLOCK	
CHECKED:		F.CHRISPINE	
DRAWN:		R.PORTLOCK	
ASSEMBLY DRG:			

Customer Information Sheet

IF IN DOUBT - ASK © NOT TO SCALE THIRD ANGLE PROJECTION ALL DIMENSIONS IN mm



EXAMPLE SHOWN: FEMALE
STANDARD WIRING
G125-FC11605F1-0150LB1

ORDER CODE:

G125-XXXXXXXXXX-XXXXLXX

CONNECTOR:
F = FEMALE
M = MALE

WIRING STYLE:
C = STANDARD WIRE
D = TWISTED PAIR

WIRE GAUGE:
1 = 26AWG
2 = 28AWG

TOTAL No. OF CONTACTS:
06, 10, 12, 16,
20, 26, 34, 50

WIRING:
05 = WHITE
68 = MULTI-COLORED
98 = BLACK
99 = RED

LENGTH OF SIGNAL
CABLE PRE-STRIP (DIM 'B'):
X = 1-9mm

WIRE END:
BLANK = CUT END (SEE NOTE 11)
A = PRE-STRIPPED (IS-37 & IS-44)
B = PRE-STRIPPED CUSTOM LENGTH

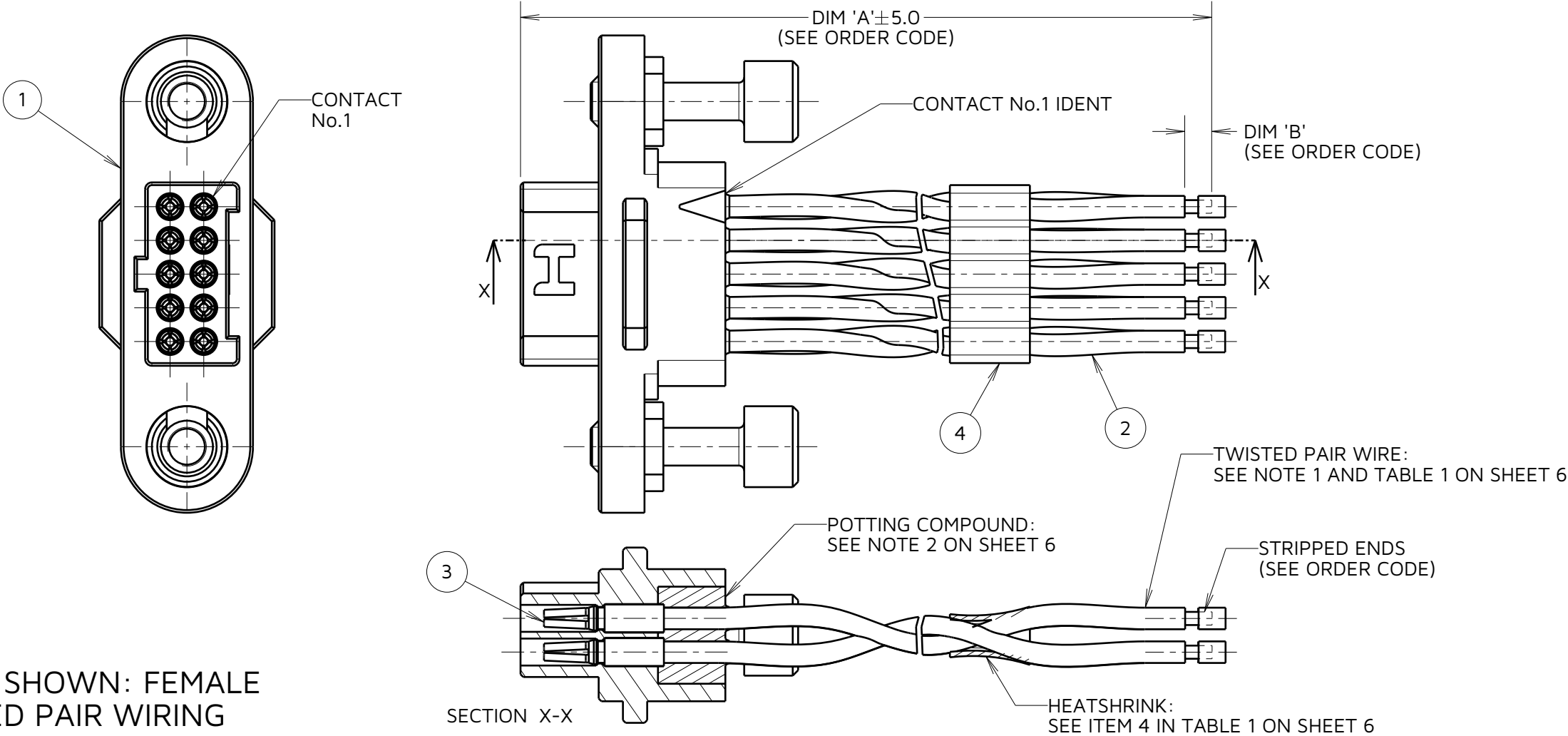
DIM 'A' LENGTH:
0060 = 60mm MIN (SEE NOTE 12)
9999 = 9999mm MAX

CONNECTOR FIXING STYLE:
FO/F1/F2/F3/F5
MO/M1/M2/M3/M5

NOTES:
13. FOR POSSIBLE COMBINATIONS, SEE BOM TABLE ON SHEET 6.
14. ASSEMBLY G125-FC11605F1-0150LB1 SHOWN FOR ILLUSTRATIVE PURPOSES ONLY. SEE ORDER CODE FOR PART NUMBER.

Customer Information Sheet

IF IN DOUBT - ASK © NOT TO SCALE THIRD ANGLE PROJECTION ALL DIMENSIONS IN mm



EXAMPLE SHOWN: FEMALE
TWISTED PAIR WIRING
G125-FD11005F1-0150LB1

TABLE 3: TWISTED PAIR CABLE CONFIGURATIONS			
WIRING FOR EXAMPLE PART No. G125-FD10805F1-0150LB1			
TWISTED PAIR No.	CONNECTOR PIN No.	TURNS PER INCH	WIRE COLOUR
1	1	3	WHITE & GREEN
	5		
2	2	2	WHITE & RED
	6		
3	3	3	WHITE & GREEN
	7		
4	4	2	WHITE & RED
	8		
FOR CONNECTORS WITH MORE THAN 8 SIGNAL CONTACTS, CONTINUE TWIST & CABLE PIN OUT CONVENTION IN THE SAME PATTERN. (I.E. TWISTED PAIR BETWEEN CONTACT X & CONTACT X)			
SEE BILL OF MATERIALS TABLE ON SHEET 6 FOR TWISTED PAIR PART NUMBERS.			

- NOTES:
- 15. FOR POSSIBLE COMBINATIONS, SEE BOM TABLE ON SHEET 6.
 - 16. ASSEMBLY G125-FC11005F1-0150LB1 SHOWN FOR ILLUSTRATIVE PURPOSES ONLY. SEE ORDER CODE FOR PART NUMBER.
 - 17. WIRE COLOUR IS CONSTRAINED BY TWISTED PAIRS. SEE TABLE 3 FOR COLOUR.

ORDER CODE:

G125-XXXXXXXXXX-XXXXLXX

CONNECTOR:
F = FEMALE
M = MALE

WIRING STYLE:
C = STANDARD WIRE
D = TWISTED PAIR

WIRE GAUGE:
1 = 26AWG
2 = 28AWG

TOTAL No. OF CONTACTS:
06, 10, 12, 16,
20, 26, 34, 50

WIRING:
05 = WHITE
68 = MULTI-COLOURED
98 = BLACK
99 = RED

LENGTH OF SIGNAL CABLE PRE-STRIP (DIM 'B'):
X = 1-9mm

WIRE END:
BLANK = CUT END (SEE NOTE 11)
A = PRE-STRIPPED (IS-37 & IS-44)
B = PRE-STRIPPED CUSTOM LENGTH

DIM 'A' LENGTH:
0060 = 60mm MIN (SEE NOTE 12)
9999 = 9999mm MAX

CONNECTOR FIXING STYLE:
FO/F1/F2/F3/F5
MO/M1/M2/M3/M5

RTP	2	12.06.24	33917
NAME	ISS.	DATE	CN/CO
APPROVED:		R.PORTLOCK	
CHECKED:		F.CHRISPINE	
DRAWN:		R.PORTLOCK	
ASSEMBLY DRG:			

HARWIN

www.harwin.com

TOLERANCES
X. = ±1mm
X.X = ±0.50mm
X.XX = ±0.20mm
X.XXX = ±0.01mm
ANGLES = ±5°
UNLESS STATED

THIS DRAWING AND ANY INFORMATION OR DESCRIPTIVE MATTER SET OUT HEREON ARE CONFIDENTIAL AND COPYRIGHT PROPERTY OF THE HARWIN GROUP AND MUST NOT BE DISCLOSED, LOANED, COPIED OR USED FOR MANUFACTURING, TENDERING OR FOR ANY OTHER PURPOSE WITHOUT THEIR WRITTEN PERMISSION.

MATERIAL:

SEE SHEET 6

TITLE:

GECKO SL
CABLE ASSEMBLY

DRAWING NUMBER:	SHT 8 OF 9
G125-XXXXXXXXXX-XXXXLXX	

Customer Information Sheet

IF IN DOUBT - ASK

©

NOT TO SCALE

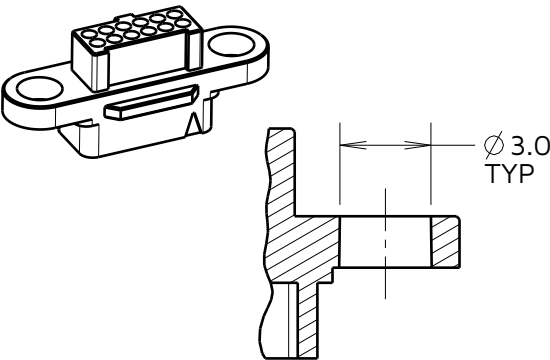
THIRD ANGLE PROJECTION

ALL DIMENSIONS IN mm

FIXING STYLES

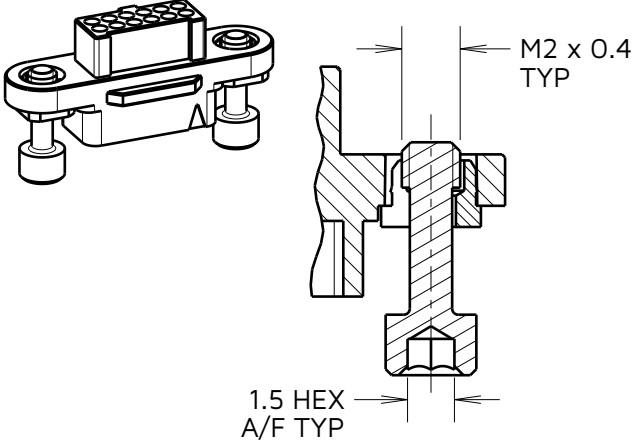
F0

EXAMPLE: G125-224129600



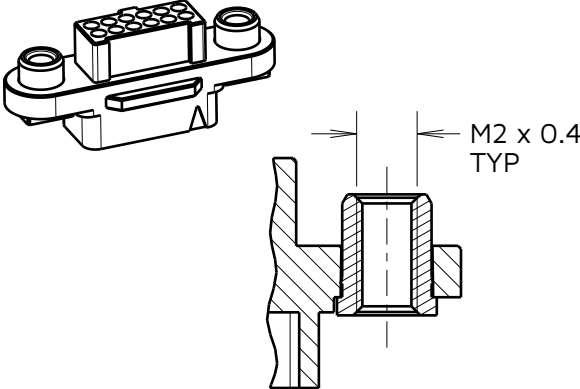
F1

EXAMPLE: G125-2241296F1



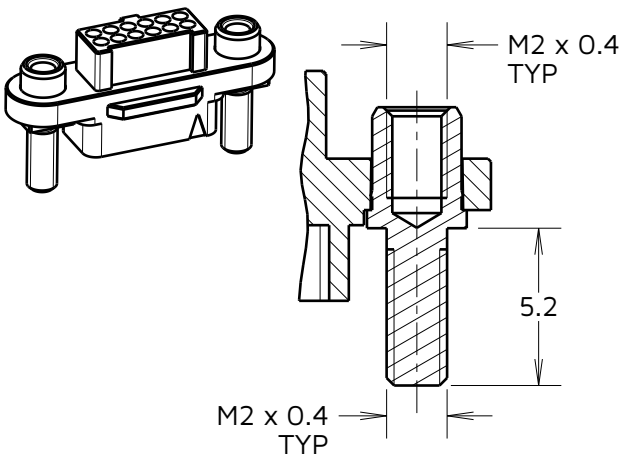
F2

EXAMPLE: G125-2241296F2



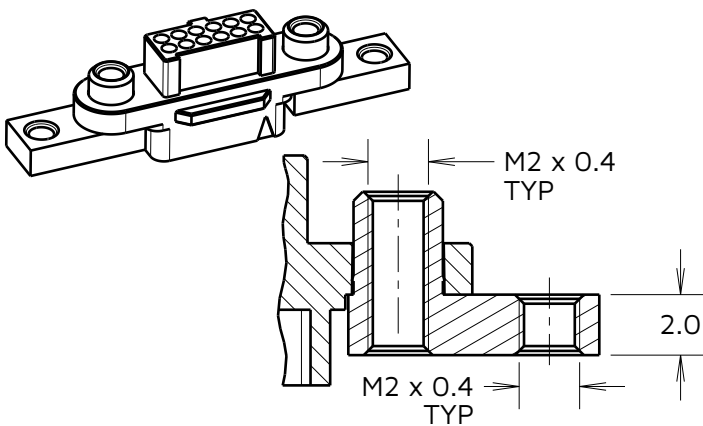
F3

EXAMPLE: G125-2241296F3



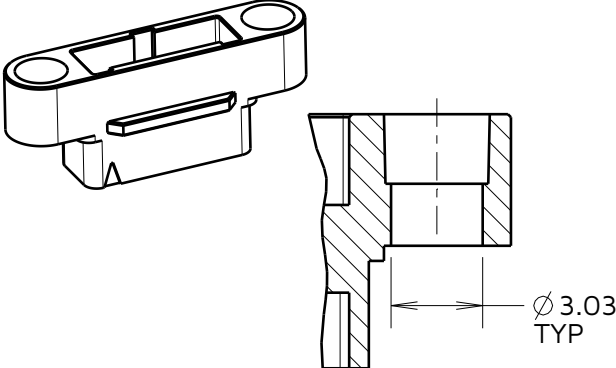
F5

EXAMPLE: G125-2241296F5



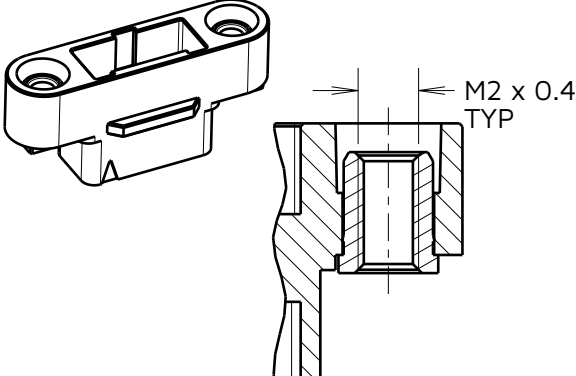
M0

EXAMPLE: G125-324129600



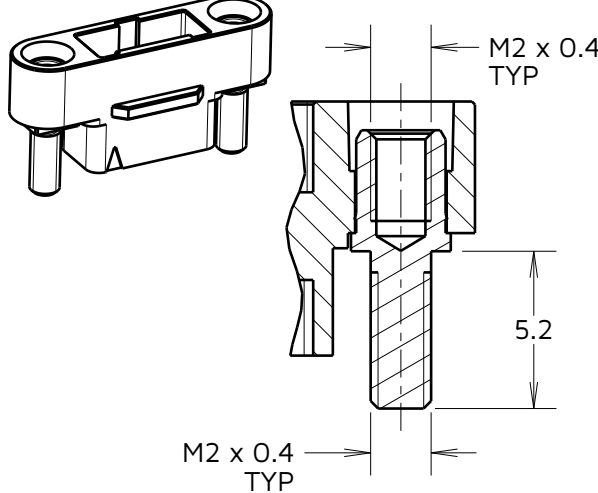
M1

EXAMPLE: G125-3241296M1



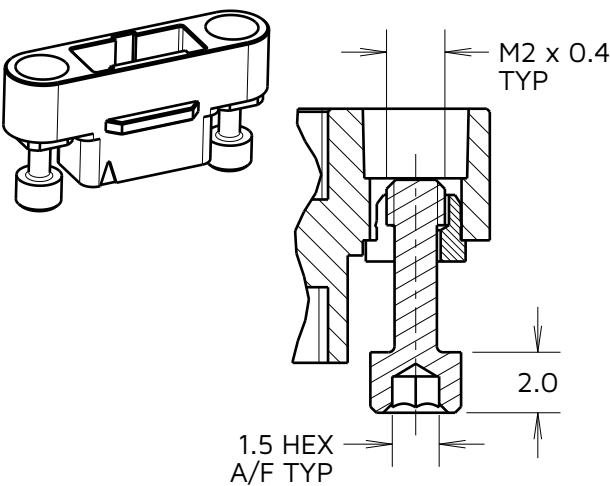
M2

EXAMPLE: G125-3241296M2



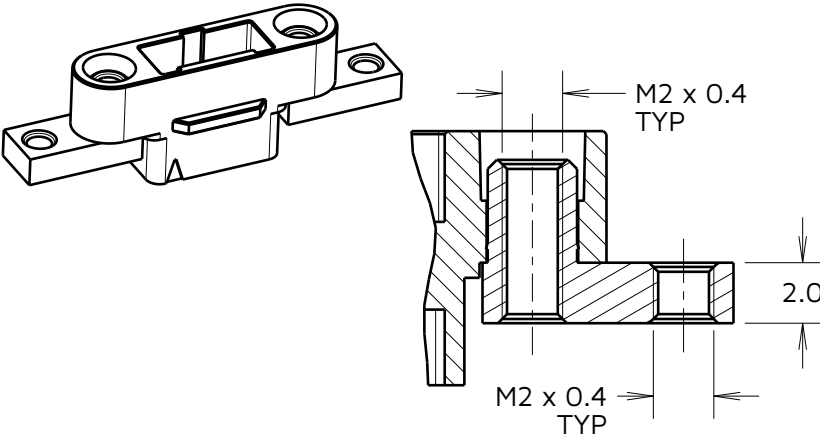
M3

EXAMPLE: G125-3241296M3



M5

EXAMPLE: G125-3241296M5



NOTES:
18. SEE BILL OF MATERIALS TABLE ON SHEET 6 AND ORDER CODE FOR FIXING IDENTIFICATION.

HARWIN

www.harwin.com

TOLERANCES
X. = ±1mm
X.X = ±0.50mm
X.XX = ±0.20mm
X.XXX = ±0.01mm
ANGLES = ±5°
UNLESS STATED

THIS DRAWING AND ANY INFORMATION OR DESCRIPTIVE MATTER SET OUT HEREON ARE CONFIDENTIAL AND COPYRIGHT PROPERTY OF THE HARWIN GROUP AND MUST NOT BE DISCLOSED, LOANED, COPIED OR USED FOR MANUFACTURING, TENDERING OR FOR ANY OTHER PURPOSE WITHOUT THEIR WRITTEN PERMISSION.

MATERIAL:

SEE SHEET 6

TITLE:

GECKO SL CABLE
ASSEMBLY - SINGLE-ENDED

DRAWING NUMBER:

G125-XXXXXXXXXX-XXXXLXX

SHT
9
OF
9

RTP	2	12.06.24	33917
NAME	ISS.	DATE	CN/CO
APPROVED:	R.PORTLOCK		
CHECKED:	F.CHRISPINE		
DRAWN:	R.PORTLOCK		
ASSEMBLY DRG:			